

- 4** Select a temperature setting (1 to 5) that is suitable for your hair type.
- Always select a low setting when you use the straightener for the first time.
 - For coarse, curly or hard-to-straighten hair, select a medium to high setting (3-5).
 - For fine, medium-textured or softly waved hair, select a medium to low setting (1-3).

Note: Take extra care with pale, blonde, bleached or colour-treated hair, since it is susceptible to damage at high temperatures.

- 5** Use the ▲ and ▼ button to set the appropriate temperature setting. (Fig. 6)
- ▶ The lights up to the selected temperature setting flash on the display to indicate that the appliance is heating up to this setting.
 - ▶ When the lights up to the selected temperature setting stop flashing, the appliance has heated up to the selected setting and is ready for use.

- 6** Comb or brush your hair so that it is disentangled and smooth (Fig. 7).

- 7** Use a comb to divide the hair into sections. Do not put too much hair in one section.

Note: It is better to section off the crown area and to straighten the hair underneath first. Then straighten the top area.

- 8** Push the locking button to unlock the straightening plates if they are locked.

- 9** Take a section that is not wider than 5cm. Place it between the straightening plates and press the handles of the appliance firmly together.

Note: Make sure that the active cooling outlet grille always points towards the hair roots while straightening (Fig. 8).

- 10** Slide the straightener down the length of the hair in 5 seconds, from root to hair end, without stopping to prevent overheating (Fig. 8).

- 11** Repeat this process after 20 seconds until you have achieved the desired look.

Tip: If you want to create flicks, straighten the lock and turn the straightener a half-circle inwards (or outwards) when you get to the end of the lock. Hold the straightener for 2 to 3 seconds and then release the lock.

Active cooling system

The appliance is equipped with an active cooling system that directs a cool airflow at your hair immediately after it has passed the straightening plates, which prevents damage to your hair.

The active cooling system is automatically activated when the appliance is switched on.

Note: The appliance produces a sound when the active cooling system is activated. It continues to produce varying sounds as long as the active cooling system is on. This is normal and does not affect the performance of the cooling system.

- To switch off the active cooling system, press and hold the active cooling button until the active cooling light goes out (Fig. 9).
- To switch on the active cooling system again, press the active cooling button until the active cooling light goes on.

Note: For the active cooling system to be effective, make sure the cooling outlet grille always points towards the hair roots while you pull the straightener down the lock of hair to be straightened (Fig. 8).

Cleaning

Never immerse the appliance in water or any other liquid, nor rinse it under the tap.

- 1 Switch off the appliance and unplug it.
- 2 Let the appliance cool down completely on a heat-resistant surface.
- 3 Clean the appliance with a damp cloth.

Storage

Never wind the mains cord round the appliance.

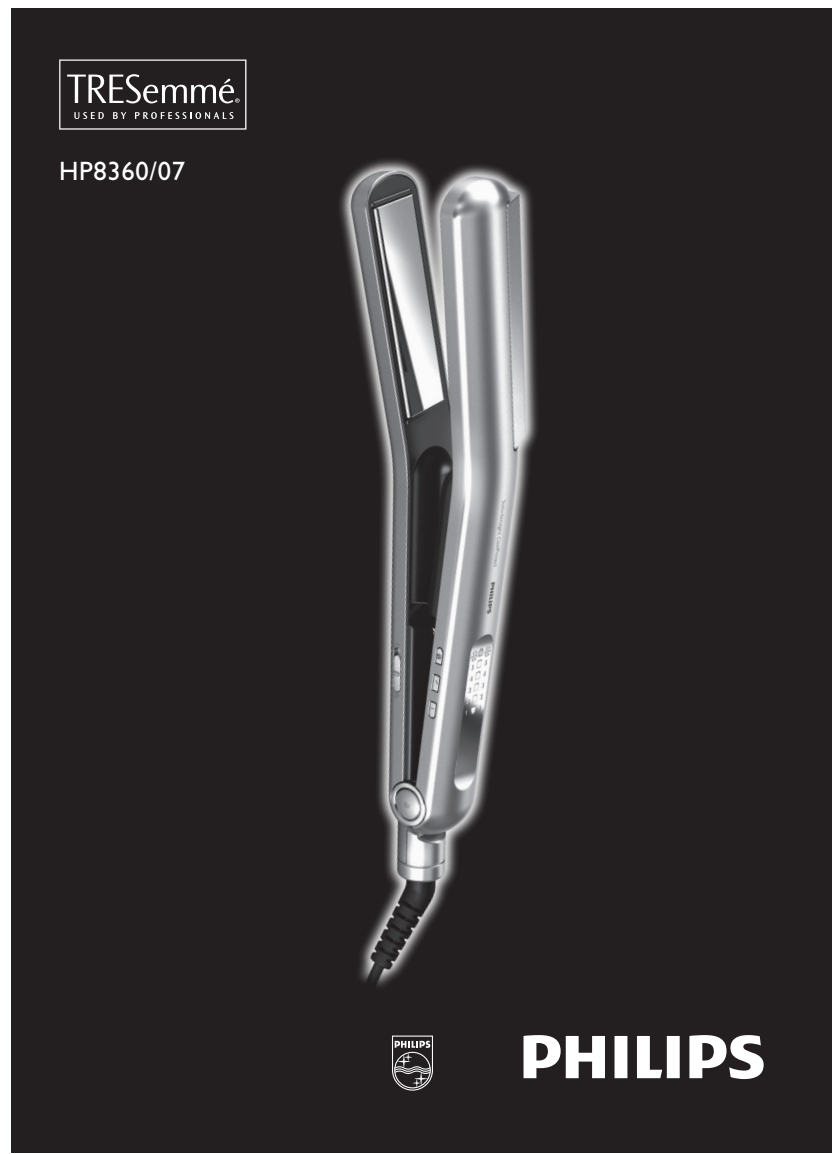
- 1 Switch off the appliance and unplug it.
- 2 Let the appliance cool down on a heat-resistant surface before you store it.
- 3 Press the locking button to lock the straightening plates together before you store the appliance (Fig. 10).
- 4 Put the appliance in the heat-resistant pouch supplied and store it in a safe and dry place. You can also store the appliance by hanging it from its hanging loop.

Environment

- Do not throw away the appliance with the normal household waste at the end of its life, but hand it in at an official collection point for recycling. By doing this, you help to preserve the environment (Fig. 11).

Guarantee & service

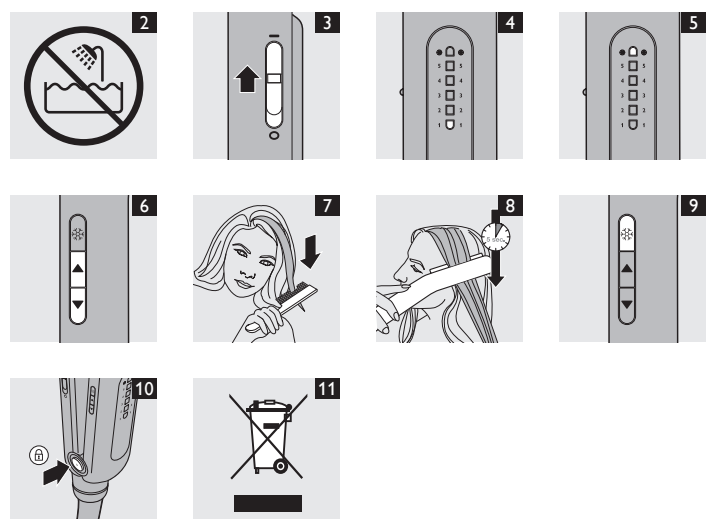
If you need service or information or if you have a problem, please visit the Philips website at www.philips.com or contact the Philips Consumer Care Centre in your country (you find its phone number in the worldwide guarantee leaflet). If there is no Consumer Care Centre in your country, go to your local Philips dealer.



www.philips.com

100% recycled paper
100% papier recyclé

4222.002.7320.2



ENGLISH

Introduction

Congratulations on your purchase and welcome to TRESemmé Philips! To fully benefit from the support that Philips offers, register your product at www.philips.com/welcome.

This new TRESemmé Philips SalonStraight Breeze straightener protects your hair against heat damage. It has a unique active cooling system that gently blows cool air onto your hair after straightening. This cool air removes the residual heat which could damage your hair and fixes your style. With the new SalonStraight Breeze you can straighten your hair without compromising its condition.

General description (Fig. 1)

- A** Chrome-coated plates
- B** Active cooling outlet grille
- C** Active cooling light
- D** Temperature setting lights (1 to 5)
- E** Lock system
- F** Hanging loop
- G** ▼ button to decrease the temperature setting
- H** ▲ button to increase the temperature setting
- I** Cooling air on/off button
- J** On/off slide switch
- Pouch (not shown)

Important

Read this user manual carefully before you use the appliance and save it for future reference.

Warning

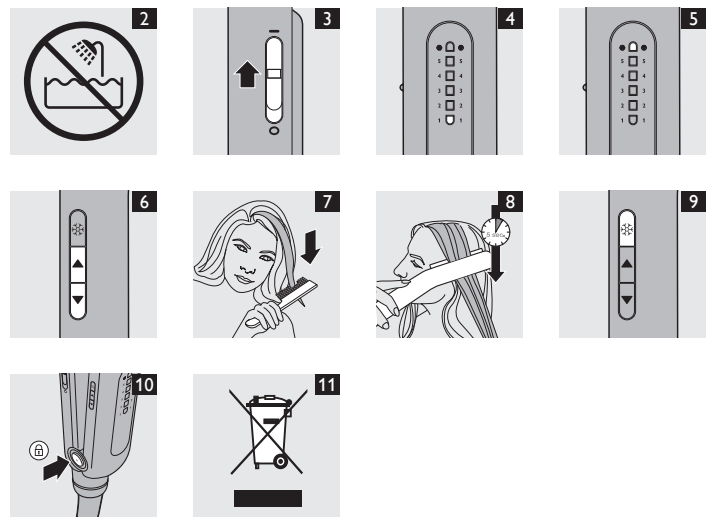
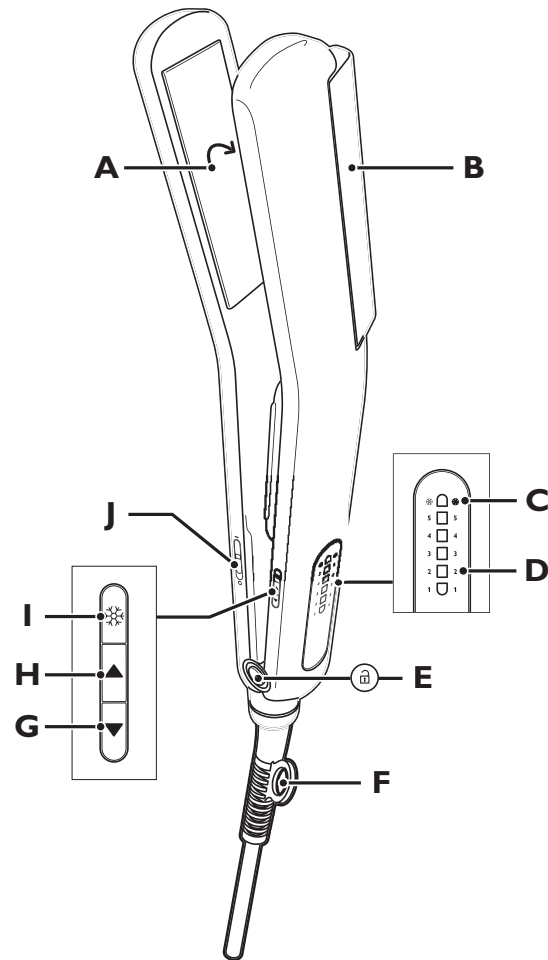
- Do not use this appliance near water. Do not use this appliance near bathtubs, showers, basins or other vessels containing water (Fig. 2).
- When you use the appliance in a bathroom, unplug it after use. The proximity of water presents a risk, even when the appliance is switched off.
- Check if the voltage indicated on the appliance corresponds to the local mains voltage before you connect the appliance.
- Check the condition of the mains cord regularly. Do not use the appliance if the plug, the mains cord or the appliance itself is damaged.
- If the mains cord is damaged, you must have it replaced by Philips, a service centre authorised by Philips or similarly qualified persons in order to avoid a hazard.
- This appliance is not intended for use by persons (including children) with reduced physical, sensory or mental capabilities, or lack of experience and knowledge, unless they have been given supervision or instruction concerning use of the appliance by a person responsible for their safety.
- Children should be supervised to ensure that they do not play with the appliance.
- Keep the appliance away from non-heat-resistant surfaces and never cover the appliance with anything (e.g. a towel or clothing) when it is hot.
- Keep the appliance away from flammable items.
- Never leave the appliance unattended when it is plugged in.

Caution

- For additional protection, we advise you to install a residual current device (RCD) in the electrical circuit that supplies the bathroom. This RCD must have a rated residual operating current not higher than 30mA. Ask your installer for advice.
- The straightening plates and the plastic parts near the plates reach a high temperature quickly. Prevent the hot surfaces of the appliance from coming into contact with your skin.
- The maximum temperature occurs just after heating up. The actual temperature during use may be lower.
- Only use the appliance on dry hair.
- Do not use the appliance on artificial hair.
- Do not leave the plates in your hair for more than a few seconds at a time as this may cause damage to your hair.
- Always switch off the appliance before you put it down, even if it is only for a moment.
- Always unplug the appliance after use.
- For safety reasons, the straightener automatically switches off after having been on for 1 hour.
- Do not wind the mains cord round the appliance.
- Wait until the appliance has cooled down before you store it.
- Keep the straightening plates clean and free of dust, dirt and styling products such as mousse, spray and gel, for a perfect straightening result.
- If you use the appliance on colour-treated hair, the straightening plates may stain.
- Do not use the appliance for any other purpose than described in this manual.
- Do not insert any objects into the appliance.
- Never block the air grilles.
- Never use any accessories or parts from other manufacturers or that Philips does not specifically recommend. If you use such accessories or parts, your guarantee becomes invalid.
- The plates have a chrome coating. This chrome coating slowly wears away over time. This does not affect the performance of the appliance.

Electromagnetic fields (EMF)

This Philips appliance complies with all standards regarding electromagnetic fields (EMF). If handled properly and according to the instructions in this user manual, the appliance is safe to use based on scientific evidence available today.



Using the appliance

Straighteners are powerful styling tools and must always be used with care. As with all straighteners that reach salon-high temperatures, do not use the appliance frequently to avoid damage to the hair.

If you use the straightener incorrectly or at a wrong temperature setting, you could overheat your hair or even burn it. Always make sure you select a temperature setting that is suitable for your hair type.

1 Put the plug in the wall socket.

2 If the straightening plates are unlocked, press the two plates together and push the locking button to lock them in this position.

Tip: The straightener heats up more quickly when the straightening plates are locked together.

3 Set the on/off slide switch to 'I' (Fig. 3).

▶ The light of temperature setting 1 starts flashing on the display to indicate that the appliance is heating up to this setting (Fig. 4).

▶ The active cooling light on the display goes on to indicate that the active cooling system is activated (see section 'Active cooling system' below) (Fig. 5).

Never leave the appliance unattended when it is plugged in. Always put the appliance on a heat-resistant surface when it is heating up and when it is hot.

For safety reasons, the straightener automatically switches off after having been on for 1 hour.