



Philips ComfortTouch Plus
Garment Steamer

FlexHead

MyEssence
StyleBoard
2000W



GC558/36

Easily de-wrinkle and refresh from top to bottom with FlexHead and MyEssence

Our new ComfortTouch Plus garment steamer effortlessly removes wrinkles from top to bottom thanks to innovative FlexHead and an extra-long StyleBoard. Refresh clothing with your favorite scents anytime you choose with MyEssence.

Quick crease removal

- Extra-long StyleBoard for better results from top to bottom
- Powerful continuous steam for fast crease removal

Reliable and safe

- Automatically switches to standby mode for peace of mind
- Safe on all ironable fabrics, no burns guaranteed

More efficient with less effort

- 5 steam settings for different kinds of fabric
- Hang&Lock keeps your hanger securely in place
- Easy Rinse descaling for years of effective use
- With FlexHead to easily reach the bottom of garments

Refresh without washing or dry cleaning

- MyEssence to refresh clothes with your favorite scents
- Continuous steam removes odors and kills 99.9%* of bacteria

PHILIPS

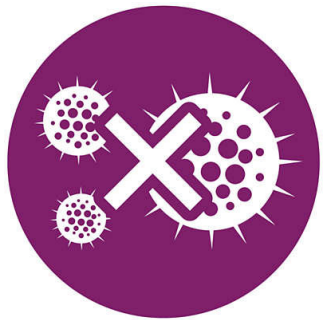
Highlights

Refresh with MyEssence



Our innovative MyEssence fragrance infuser lets you refresh clothing with your favorite scents anytime you choose.

99.9% bacteria-free*



Hot steam refreshes your clothes and kills up to 99.9% of bacteria*. Less frequent washing and dry cleaning saves time and money, and helps clothes last longer.

Powerful continuous steam



Powerful continuous steam is blown through the nozzles, enabling you to remove creases with only a few strokes.

Extra-long StyleBoard

An extra long StyleBoard provides reliable support during steaming. Simply press the fabric between the steam plate and board for easier steaming with crisp results from top to bottom.

With handy FlexHead

Innovative FlexHead lets you steam the bottom of garments easily, with less bending and kneeling. The flexible steam plate ensures maximum contact with the fabric so less steam escapes for efficient results.

5 steam settings



Set your preferred steam setting for optimal results on different fabric. Use low steam for thinner fabrics and a more powerful setting for thicker fabrics and coats.

Hang&Lock



Our unique Hang&Lock feature holds your clothes hanger in place for convenient steaming. It prevents the hanger from swinging or falling off.

Easy Rinse descaling



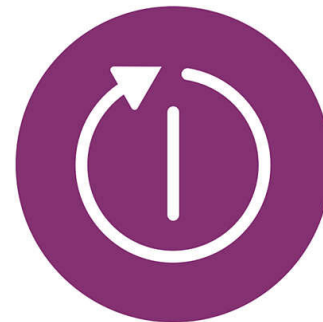
Prolong the lifetime of your appliance by using the Easy Rinse descaling function regularly.

Safe on all ironable fabrics



The steamer is safe to use on all ironable fabrics and garments. The steam plate can be safely pressed against any clothing with no risk of burning – a great solution for delicate fabrics, like silk.

Auto shut off



The steamer automatically switches to standby mode when the water tank is empty, so you have peace of mind even if you forget to switch it off.

Specifications

Easy to use

- Water tank capacity: 1800 ml
- Safe on all ironable fabrics: Even delicates like silk
- Detachable water tank
- Power cord length: 1.6 m
- Hose length: 1.3 m
- Hang&Lock
- Silicone steam hose
- Auto shut off

Technology

- MyEssence fragrance caps
- FlexHead

Design

- Color: Purple Magic

Accessories included

- Brush
- Garment hanger
- Glove for extra protection
- MyEssence Fragrance caps
- Adjustable double pole

Fast crease removal

- Power: Max 2000 W
- Continuous steam: up to 40 g/min
- Voltage: 220 - 240 V
- Ready to use: <1 minute(s)
- Variable steam: 5 levels

Board cover

- Top layer: 100% Cotton

Scale management

- Descaling and cleaning: Easy Rinse

Size and weight

- Packaging dimensions (WxHxL): 37x46x64.5 cm
- Product dimensions (WxHxL): 33x173x37 cm

Support for ironing

- StyleBoard

Guarantee

- 2 year worldwide guarantee



Issue date 2022-03-02

Version: 1.1.2

EAN: 08 71010 38425 07

© 2022 Koninklijke Philips N.V.
All Rights reserved.

Specifications are subject to change without notice.
Trademarks are the property of Koninklijke Philips N.V.
or their respective owners.

www.philips.com

* Tested by external body for bacteria types Escherichia coli 8099,
Staphylococcus aureus ATCC 6538, Candida albicans ATCC 10231
with 1 minute steaming time.