



Philips ComfortTouch
Garment Steamer

StyleBoard
1800W
3 steam settings



GC552/46

Effortless de-wrinkling from top to bottom

with FlexHead and extra-long StyleBoard

Our new ComfortTouch garment steamer removes wrinkles and refreshes fabrics. With powerful continuous steam and an extra-long StyleBoard, clothes will be wrinkle free from top to bottom in no time.

Quick crease removal

- Fabric brush for deeper steam penetration on thick garments
- Extra-long StyleBoard for better results from top to bottom
- Powerful continuous steam for fast crease removal

Reliable and safe

- PVC free silicon steam hose
- Easy Rinse descaling for years of effective use
- Safe on all ironable fabrics, no burns guaranteed

More efficient with less effort

- Hang&Lock keeps your hanger securely in place
- 3 steam settings for different kinds of fabrics
- With FlexHead to easily reach the bottom of garments

Refresh without washing or dry cleaning

- Continuous steam removes odors and kills 99.9%* of bacteria

PHILIPS

Highlights

Powerful continuous steam



Powerful continuous steam is blown through the nozzles, enabling you to remove creases with only a few strokes.

Extra-long StyleBoard

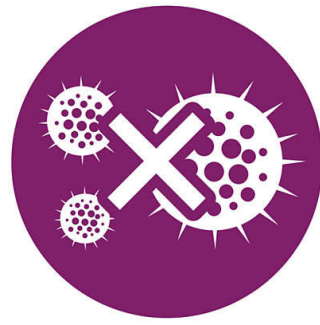
An extra long StyleBoard provides reliable support during steaming. Simply press the fabric between the steam plate and board for easier steaming with crisp results from top to bottom.

Brush accessory



Use the brush accessory with thicker garments like coats for better steam penetration and a smoother finish.

99.9% bacteria-free*



Hot steam refreshes your clothes and kills up to 99.9% of bacteria*. Less frequent washing and dry cleaning saves time and money, and helps clothes last longer.

With handy FlexHead

Innovative FlexHead lets you steam the bottom of garments easily, with less bending and kneeling. The flexible steam plate ensures maximum contact with the fabric so less steam escapes for efficient results.

3 steam settings



Set your preferred steam setting for optimal results on different fabrics. Use low steam for thinner fabrics and a more powerful setting for thicker fabrics and coats.

Hang&Lock



Our unique Hang&Lock feature holds your clothes hanger in place for convenient steaming. It prevents the hanger from swinging or falling off.

Safe on all ironable fabrics



The steamer is safe to use on all ironable fabrics and garments. The steam plate can be safely pressed against any clothing with no risk of burning – a great solution for delicate fabrics, like silk.

Easy Rinse descaling



Prolong the lifetime of your appliance by using the Easy Rinse descaling function regularly.

Specifications

Board cover

- Top layer: 100% Cotton

Support for ironing

- StyleBoard

Design

- Color: Soft Blossom

Easy to use

- Safe on all ironable fabrics: Even delicates like silk
- Water tank capacity: 1800 ml
- Detachable water tank
- Power cord length: 1.6 m
- Hose length: 1.3 m
- Hang&Lock
- Silicone steam hose

Accessories included

- Brush
- Garment hanger

- Glove for extra protection
- Adjustable double pole

Guarantee

- 2 year worldwide guarantee

Technology

- FlexHead Technology

Fast crease removal

- Power: 1800 W
- Continuous steam: up to 35 g/min
- Voltage: 220 - 240 V
- Ready to use: <1 minute(s)
- Variable steam: 3 levels

Scale management

- Descaling and cleaning: Easy Rinse

Size and weight

- Packaging dimensions (WxHxL): 37x46x64.5 cm
- Product dimensions (WxHxL): 33x173x37 cm



Issue date 2023-08-06

Version: 1.1.2

EAN: 87 10103 84263 7

© 2023 Koninklijke Philips N.V.
All Rights reserved.

Specifications are subject to change without notice.
Trademarks are the property of Koninklijke Philips N.V.
or their respective owners.

www.philips.com

* Tested by external body for bacteria types Escherichia coli 8099, Staphylococcus aureus ATCC 6538, Candida albicans ATCC 10231 with 1 minute steaming time.