

PHILIPS

sonicare



Sonic electric
toothbrush

3100 series

Sonic technology

Pressure sensor

QuadPacer and SmarTimer

Slim ergonomic design



HX3671/23

Goodbye manual toothbrush. Hello Sonic technology.

Up to 3x better plaque removal*

Sonic technology combined with our brush action gently removes plaque up to 3x better* than a manual toothbrush.

Designed around you

- Ergonomic design makes the toothbrush easy to hold and use
- Always know when to replace your brush heads
- 14-day long lasting battery life
- Goodbye adapter. Hello USB.

Optimize your brushing

- Optimize your brushing with SmarTimer and QuadPacer

Easy transition to Sonicare

- Easy-Start to ease the transition

Protects your gums

- Built-in pressure sensor protects your teeth & gums

Provides superior clean

- Up to 3x better plaque removal vs a manual toothbrush*
- Our unique technology brings you a powerful yet gentle clean

3100 series

Sonic electric toothbrush

HX3671/23

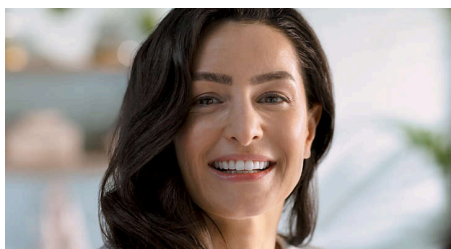
Highlights

Advanced Sonicare Technology



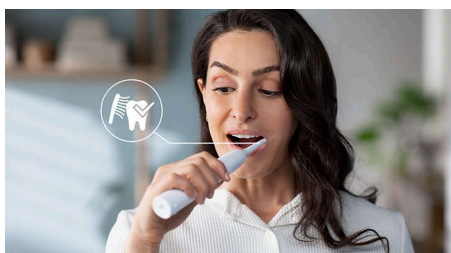
Powerful bristle vibrations drive microbubbles deep between your teeth and along your gum line for a refreshing experience. You will get two month's worth of manual brushing in just 2 minutes.** 31000 brush strokes per minute gently clean your teeth, break up plaque, and sweep it away for an exceptional daily clean.

Removes plaque 3x better*



The Sonicare electric toothbrush with advanced sonicare technology is clinically proven to remove plaque up to 3X better* than a manual toothbrush. It removes plaque from your teeth and along the gum line while protecting your gums.

Protects your gums



Built-in pressure sensor automatically detects pressure you apply, warns you, and reduces the toothbrush vibrations automatically to help

protect your gums. The toothbrush will make a pulsing sound as a reminder to ease off the pressure. 7 out of 10 people found this feature helped them become better brushers.

SmartTimer and QuadPacer



2 minute SmartTimer and 30-second QuadPacer guide you to brush for the recommended time in all areas of your mouth to ensure a complete clean.

Designed around you



Slim, light-weight, and ergonomic design makes the toothbrush easy to hold and use so that you can get an amazing clean without any strain.

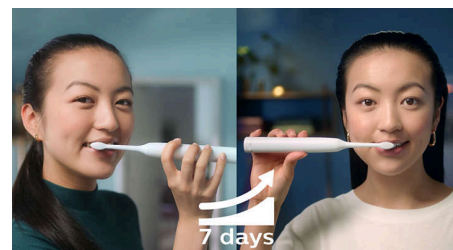
BrushSync replacement reminder



All brush heads wear out over time, so you'll want to keep an eye on yours to make sure you're still getting a great clean. Our BrushSync

technology tracks how long you've been using your brush head for, and how hard you've been brushing. The BrushSync replacement reminder on your handle and a short beep gives you a heads up when it's time to replace it.

Easy-Start



Our Easy-Start program gives you the option of a gradual, gentle increase in brushing power the first 14 times you use your new toothbrush.

Long lasting battery life



Battery life lasts up to 14 days so you can go long periods without charging.

Goodbye adapter. Hello USB.

Power adapters may seem small, but added together, their plastics make a huge impact on the environment. By switching to USB charger in our Philips Sonicare 1000-4000 Series alone, we can use up to 189,210 kg less plastic every 4 years. That's powerful, right?

3100 series

Sonic electric toothbrush

HX3671/23

Specifications

Power

Voltage: DC5V

Technical specifications

Operating time (full to empty): 14 days*****

Battery: Rechargeable

Battery type: Lithium ION

Design and finishing

Color: White

Service

Warranty: 2-year limited warranty

Ease of use

Battery indicator: Light shows battery status

Brush head system: Easy click-on brush heads

Handle: Slim ergonomic design

Items included

Handle: 1 3100 Series

Brush heads: 1 C2 Optimal Plaque Defence

Charger: 1

Cleaning performance

Performance: Removes up to 3x more plaque*

Timer: Quadpacer and SmarTimer

Pressure feedback: Vibrates handle to alert user

Modes

Clean: For exceptional everyday clean

Smart sensor technology

Pressure sensor: Alerts when brushing too hard

BrushSync Replacement Reminder: Always know when to, replace brush heads

