

Philips 3000 Series  
Blender

### ProBlend system

1.9L Maximum Capacity  
1L Effective capacity  
1 Speed setting + pulse

HR2042/13



Smooth blends with no lumps in 45 seconds\*

### Unique ProBlend system

Designed to improve your everyday blending, with the 290W power and blade performance you need to take on all your ingredients and even crush ice. Delivering a smooth consistency with minimal effort and in no time at all.

#### Built to last

- MTP sensor prevents motor overheating
- Ergonomic and robust design for ease of use
- Easy to clean and dishwasher safe
- Durable stainless steel blades
- Suction feet for no vibrations during use
- 2-year warranty

#### Everyday versatility

- 1 speed + Pulse settings to choose from
- Large jar perfectly sized for your family's needs
- Download the NutriU app for healthy, tasty family favorites
- Specially designed to process different ingredients

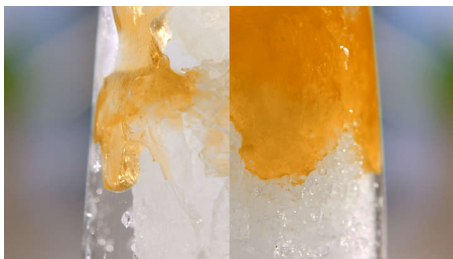
#### Improved performance

- Unique ProBlend system ensures smooth consistency
- Crushes ice into fine pieces in just 45 seconds\*\*

# PHILIPS

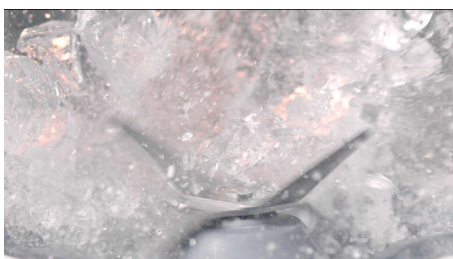
# Highlights

## ProBlend system



Unique ProBlend system perfectly combines 3 technologies, custom-designed to ensure smooth blending with no lumps in just 45 seconds\*. The 290W power motor drives the blending flow to circulate all your ingredients evenly, while the innovative blade design is specially shaped to maximize the cutting area. Last but not least, the jar is designed with unique ribs to continuously guide ingredients back into the blending flow.

## Ice crushing



Use the ProBlend system plus the Pulse setting to crush ice cubes into fine pieces in just 45 seconds\*. Perfect for your favorite chilled drinks and smoothies, and great for special desserts.

## Speed settings



Produce a wide range of drinks and enable fast ingredient preparation for your favorite meals with 1 speed and Pulse settings to choose from. Use for ingredients from herbs, spices and veggies, to grinding coffee, and even

crushing ice to make a delicious chilled smoothie.

## 1.9L family size jar



Serves up to 5 drinks (based on 200ml glass size) thanks to 1L effective capacity.\*\*

## NutriU app



Download and discover the NutriU app with +200 ideas on how to make your favorite drinks, meals and snacks with the help of your new blender. Healthy cooking should be simple and leave your family wanting more. That is why the NutriU app offers a variety of healthy alternatives of your favorite dishes. From healthy chocolate desserts to nutrient-packed main meals, we create our recipes healthy but without compromising on delicious taste.

## Motor Thermo Protection sensor



Special Motor Thermo Protection (MTP) sensor is designed to prevent the motor from overheating and protects from over-current condition during use.

## Considered design



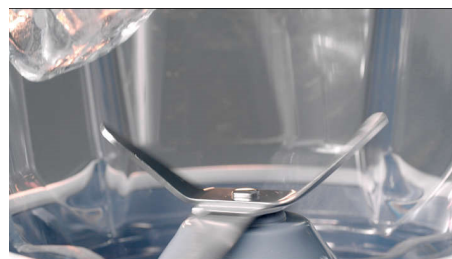
The design has been carefully considered to be both ergonomic and robust, while also being modern and stylish, sized to fit in all types of kitchen. The jar shape is comfortable to grip and the rotary knob enables easy operation.

## Easy to clean



The jar has a removable lid to make cleaning easy. The jar, blades and lid are all dishwasher safe.

## Stainless steel blades



Durable stainless steel blades stay sharp and free from rust or tarnishing for longer.

## Anti-vibrate feet



The blender features suction feet for stability and to ensure it doesn't vibrate during use.

# Specifications

## Country of origin

- Made in: China

## Accessories

- Mill

## Technical specifications

- Power: 290 W
- Cord length: 0.85 m
- Effective capacity: 1 L

## Design

- Color: Red

## Weight and dimensions

- Dimensions of product (LxWxH):  
164x192x377 mm

## General specifications

- Dishwasher safe
- Product features: ProBlend technology with 4 star

stainless steel blade, Durability: Motor Thermo protection sensor, Easy to clean: Dishwasher safe, Jar size: 1.9L maximum capacity, Jar size: 1L effective capacity, Speed settings: 1 speed+pulse, Easy to store: Integrated power and cord storage, Doesn't vibrate: Suction feet, Jar material: Plastic, Accessories: mill

- Speed UI: Rotary Knob

## Finishing

- Body material: Plastic
- Jar material: Plastic
- knives material: Stainless steel

## Service

- 2-year worldwide guarantee
- Warranty: 2 years global warranty

## Guarantee

- 2-year worldwide guarantee



Issue date 2023-09-20

Version: 3.3.1

EAN: 87 20389 00014 0

© 2023 Koninklijke Philips N.V.  
All Rights reserved.

Specifications are subject to change without notice.  
Trademarks are the property of Koninklijke Philips N.V.  
or their respective owners.

[www.philips.com](http://www.philips.com)

\*\* Tested in MAX mode on various recipes  
\*\*\* Tested in PULSE mode, with 8 ice cubes (2.5x2.5x2.5cm)  
\*\*\* if considered a glass of 200ml