



Philips PerfectCare  
Compact  
Steam generator iron

Max 6.5-bar pump pressure

Up to 420 g steam boost  
1.5-l water tank capacity  
Carry lock



GC7846/80

## Iron faster with 2 x more steam\*

Our most compact steam generator

Powerful, continuous steam makes fast work of all your ironing, without any need to adjust temperature thanks to our OptimalTEMP technology. Compact and lightweight for easy use and storage.

### Compact technology

- Large tank for long use
- Automatic shut-off when iron is left unattended
- Lightweight and compact for easy use and storage
- Carry lock for safe and easy transport

### No temperature setting needed; no burning, guaranteed

- Safe on all ironable garments, guaranteed not to burn
- OptimalTEMP technology, no temperature settings required

### Fast ironing with continuous powerful steam

- Save energy with ECO mode
- Calc-clean container included - no cartridges, no extra cost
- Scratch-resistant SteamGlide soleplate provides good gliding
- Powerful steam for ultimate crease removal

**PHILIPS**

# Highlights

## Ultra-powerful steam



Strong, continuous steam tackles even the thickest fabrics with ease. Watch stubborn creases melt away with an extra steam boost just where you need it. This extra steam is perfect for vertical steaming to refresh clothes and curtains, too.

## No temperature setting needed



Iron everything from silk to jeans without adjusting the temperature. Thanks to OptimalTEMP, no dial or settings are needed. So there's no more pre-sorting the laundry, or waiting for the iron to heat up and cool down. You're ready for any fabric, any time.

## No burns – guaranteed



Thanks to OptimalTEMP technology, we guarantee that this iron will never cause burns

to any ironable fabric. You can even leave it resting face down on your clothes or ironing board. No burns, no shine. Guaranteed.

## 1.5 L water tank

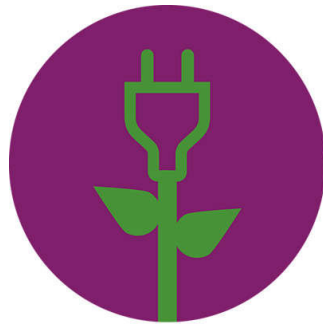


A 1.5 litre transparent tank gives you 1.5 hours of continuous use. See clearly how much water is left and refill easily under the tap through the large filling door.

## Smart descaling

Our built-in descaling system, Smart Calc Clean, reminds you when you need to descale. It also includes a container to make descaling easy. This means no cartridges are required and there are no additional costs.

## Energy saving



Save energy and get the same great results. ECO mode reduces your energy consumption for garments that require less steam.

## Compact and convenient



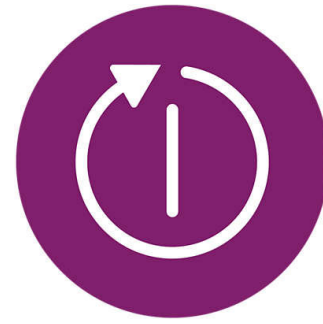
The lightweight, compact size is perfect for storage and fits conveniently on your ironing board. Exclusive ProVelocity technology makes our steam generators smaller and more compact than ever.

## Safety carry lock



Lock your iron securely to the base station for easy carrying around the house and to reduce the risk of accidentally touching the hot soleplate.

## Automatic shut-off



The automatic shut-off function automatically switches off your steam generator iron if it has not been used for a few minutes. This saves energy and gives you peace of mind.

## Steam generator iron

Max 6.5-bar pump pressure Up to 420 g steam boost, 1.5-l water tank capacity, Carry lock

# Specifications

### Easy to use

- Water tank capacity: 1500 ml
- Safe on all ironable fabrics: Even delicates like silk
- Soleplate gliding performance: 3 stars
- Soleplate name: SteamGlide
- Safety auto off
- Cord freedom (swivel): 180 degree cord freedom
- Refill anytime during use
- Tap water suitable
- Power cord length: 1.8 m
- Hose length: 1.6 m
- Integrated power plug
- Precision steam tip
- Ready to use: Light indicator, Sound indicator
- Soleplate scratch resistance: 4 stars

### Technology

- OptimalTEMP technology
- For all ironable fabrics
- No burns
- No temperature settings needed
- ProVelocity steam engine
- Smart Control Processor

### Accessories included

- Calc clean container

### Fast crease removal

- Pressure: max 6.5 bar pump
- Power: 2400 W
- Steam boost: Up to 420 g
- Continuous steam: Up to 120 g/min
- Vertical steam

- Voltage: 220-240 V
- Ready to use: 2 min
- Variable steam levels
- Steam-on-demand

### Scale management

- Descaling and cleaning: Smart Calc Clean
- Descaling reminder: Light, Sound, no cartridges needed, no extra

### Storage

- Carry lock: For transportation and safety
- Cord storage: Velcro fix
- Hose storage: Hose storage compartment

### Size and weight

- Weight of iron: 1.2 kg
- Packaging dimensions (W x H x D): 23 x 27.5 x 39.3 cm
- Product dimensions (W x H x D): 19.3 x 22.3 x 37.3 cm
- Total weight with packaging: 3.85 kg
- Weight of iron + base: 2.95 kg

### Green efficiency

- Energy saving mode
- Energy saving\*: 30 %
- Recycled plastic used: 30 %
- User manual: 100% recycled paper

### Guarantee

- 2 year worldwide guarantee



Issue date 2022-01-13

Version: 2.2.1

© 2022 Koninklijke Philips N.V.  
All Rights reserved.

Specifications are subject to change without notice.  
Trademarks are the property of Koninklijke Philips N.V.  
or their respective owners.

[www.philips.com](http://www.philips.com)

\* Up to 30% energy saving with ECO mode compared to Turbo mode based on IEC 60311

\* Compared to Philips steam iron Azur