

# PHILIPS

Sonic electric  
toothbrush

1100 Series

Sonic technology

QuadPacer and SmarTimer

Slim ergonomic design

14-day battery life

HX3641/41



## Goodbye manual toothbrush. Hello Sonic technology.

Up to 3x better plaque removal\*

Sonic technology combined with our brush action gently removes plaque up to 3x better\* than a manual toothbrush.

### **Designed around you**

- Ergonomic design makes the toothbrush easy to hold and use
- 14-day long lasting battery life

### **Optimize your brushing**

- Optimize your brushing with SmarTimer and QuadPacer

### **Easy transition to Sonicare**

- Easy-Start to ease the transition

### **Protects your gums**

- Safe and gentle to use

### **Provides superior clean**

- Up to 3x better plaque removal vs a manual toothbrush\*
- Our unique technology brings you a powerful yet gentle clean

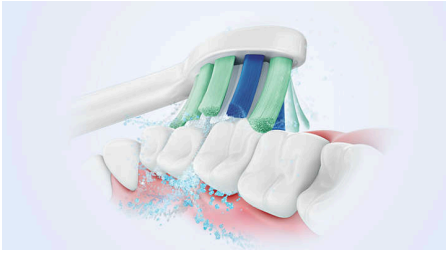
## 1100 Series

Sonic electric toothbrush

HX3641/41

# Highlights

### Advanced Sonicare Technology



Powerful bristle vibrations drive microbubbles deep between your teeth and along your gum line for a refreshing experience. You will get two month's worth of manual brushing in just 2 minutes.\*\* 31000 brush strokes per minute gently clean your teeth, break up plaque, and sweep it away for an exceptional daily clean.

### Safe and gentle to use



Sonicare toothbrush provides you with a thorough clean without being harsh on your teeth and gums. Gentle yet powerful sonic vibrations provide an exceptional clean while being gentle on your teeth and gums.

### SmartTimer and QuadPacer



2 minute SmartTimer and 30-second QuadPacer guide you to brush for the recommended time in all areas of your mouth to ensure a complete clean.

### Designed around you



Slim, light-weight, and ergonomic design makes the toothbrush easy to hold and use so that you can get an amazing clean without any strain.

### Long lasting battery life



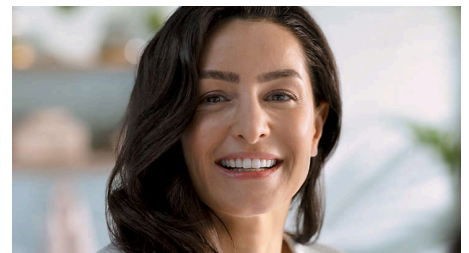
Battery life lasts up to 14 days so you can go long periods without charging.

### Easy-Start



Our Easy-Start program gives you the option of a gradual, gentle increase in brushing power the first 14 times you use your new toothbrush.

### Removes plaque 3x better\*



The Sonicare electric toothbrush with advanced sonicare technology is clinically proven to remove plaque up to 3X better\* than a manual toothbrush. It removes plaque from your teeth and along the gum line while protecting your gums.

# 1100 Series

Sonic electric toothbrush

HX3641/41

## Specifications

### Power

Voltage: DC5V

### Technical specifications

Battery: Rechargeable

Operating time (full to empty): 14 days\*\*\*\*\*

Battery type: Lithium ION

### Consumer Trade Item

Height: 22 cm

Width: 10.9 cm

Length: 6.3 cm

Net weight: 0.184 kg

Gross weight: 0.264 kg

GTIN: 8710103998358

Country of origin: CN

Harmonized system code: 85098000

### Outer Carton

Height: 25.4 cm

Width: 20.8 cm

Length: 12.5 cm

Net weight: 0.552 kg

Gross weight: 0.946 kg

GTIN: 18710103998355

### Design and finishing

Color: Mint green

### Service

Warranty: 2-year limited warranty

### Pallet Layer

Height: 25.4 cm

Width: 120 cm

Length: 100 cm

### Ease of use

Brush head system: Easy click-on brush heads

Battery indicator: Light shows battery status

Handle: Slim ergonomic design

### Items included

Handle: 1100 Series

Brush heads: 1 W Optimal White

Charger: 1

### Cleaning performance

Performance: Removes up to 3x more plaque\*

Timer: Quadpacer and SmarTimer

### Modes

Clean: For exceptional everyday clean

