

# PHILIPS

## sonicare

Sonic electric  
toothbrush

4100 Series

Sonicare technology

QuadPacer and SmarTimer

Slim ergonomic design

14-day battery life

HX3681/23



## Goodbye manual toothbrush. Hello Sonicare.

### Up to 7X better plaque removal\*

Sonicare technology combined with our brush action gently removes up to 7x better\* plaque than a manual toothbrush.

#### **Designed around you**

- Always know when to replace your brush heads
- 14-day long lasting battery life
- Goodbye adapter. Hello USB.
- Switch between 2 intensity settings

#### **Optimize your brushing**

- Optimize your brushing with SmarTimer and QuadPacer

#### **Protects your gums**

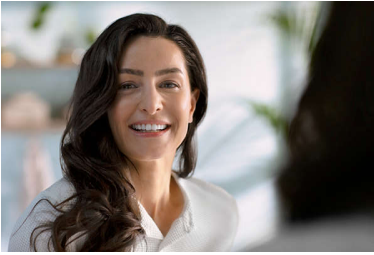
- Pressure Sensor helps protect your teeth and gums

#### **Provides superior clean**

- Our unique technology brings you a powerful yet gentle clean
- Up to 7x better plaque removal vs a manual toothbrush\*

# Highlights

## Removes plaque 7x better\*



Sonicare electric toothbrush with advanced sonicare technology is clinically proven to remove up to 7x better\* plaque from your teeth and along the gum line while protecting your gums.

## Protects your gums



Built-in pressure sensor automatically detects pressure you apply, warns you, and reduces the toothbrush vibrations automatically to help protect your gums. The toothbrush will make a pulsing sound as a reminder to ease off the pressure. 7 out of 10 people found this feature helped them become better brushers.

## SmartTimer and QuadPacer



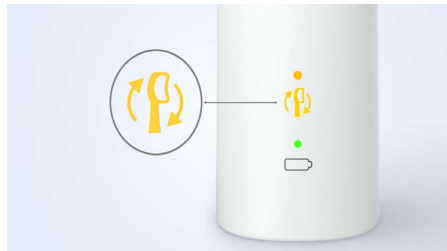
2 minute SmartTimer and 30-second QuadPacer guide you to brush for the recommended time in all areas of your mouth to ensure a complete clean.

## Advanced Sonicare Technology



Powerful bristle vibrations drive microbubbles deep between your teeth and along your gum line for a refreshing experience. You will get two month's worth of manual brushing in just 2 minutes.\*\* 31000 brush strokes per minute gently clean your teeth, break up plaque, and sweep it away for an exceptional daily clean.

## BrushSync replacement reminder



All brush heads wear out over time, so you'll want to keep an eye on yours to make sure you're still getting a great clean. Our BrushSync

technology tracks how long you've been using your brush head for, and how hard you've been brushing. The BrushSync replacement reminder on your handle and a short beep gives you a heads up when it's time to replace it.

## 2 intensity settings



Switch between 2 intensity settings to make the brushing session comfortable for you.

## Long lasting battery life



Battery life lasts up to 14 days so you can go long periods without charging.

## Goodbye adapter. Hello USB.

Power adapters may seem small, but added together, their plastics make a huge impact on the environment. By switching to USB charger in our Philips Sonicare 1000-4000 Series alone, we can use up to 189,210 kg less plastic every 4 years. That's powerful, right?

# Specifications

## Power

Voltage: DC5V

## Technical specifications

Battery: Rechargeable

Operating time (full to empty): 14 days\*\*\*\*\*

Battery type: Lithium ION

## Design and finishing

Color: White

## Service

Warranty: 2-year limited warranty

## Ease of use

**Brush head system:** Easy click-on brush heads

**Battery indicator:** Light shows battery status

**Handle:** Slim ergonomic design

**BrushSync Replacement Reminder:**

Replacement reminder. Always know when to, replace brush heads, Reminder icon lights up, to always ensure best results

## Items included

**Brush heads:** 1 C2 Optimal Plaque Control

**Charger:** 1

**Handle:** 1 4100 Series

## Cleaning performance

**Performance:** Removes up to 7x more plaque\*

**Timer:** Quadpacer and SmarTimer

**Pressure feedback:** Vibrates handle to alert user

## Modes

**Clean:** For exceptional everyday clean

**2 intensities:** High, Low

## Smart sensor technology

**Pressure sensor:** Alerts when brushing too hard

**BrushSync Replacement Reminder:** Always know when to, replace brush heads

