



Philips Steam&Go  
Handheld garment steamer

**1000 W**  
Steam-on-demand  
Brush



**GC310/35**

## Quick crease removal at the touch of your hand

This handheld garment steamer is ideal for last moment touch-ups and difficult to iron clothes. Easy to use and quick, it is the perfect addition to your iron.

### Easy to use

- Ergonomic design for handheld operation
- No ironing board needed
- Detachable water tank for easier filling
- Safe to use on delicate fabrics, like silk

### Quick crease removal

- Automatic continuous steam delivered by electric pump
- Fast heat up time
- Brush accessory for a smooth finish

### Refreshes clothes without washing or dry cleaning

- Steam kills up to 99.9% of bacteria\*
- Removes cigarette, food and body odors

**PHILIPS**

# Highlights

## No ironing board needed



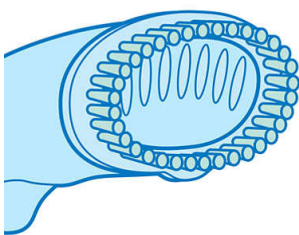
By using the steamer you do not need an ironing board anymore, which makes ironing hassle-free.

## Automatic continuous steam



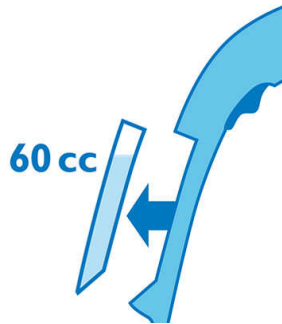
Electric pump provides continuous steam for easy and quick crease removal.

## Brush accessory



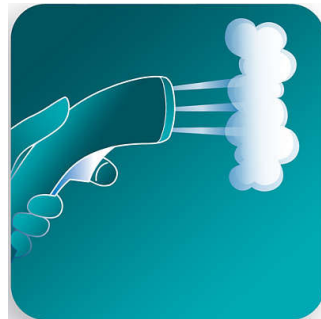
Use the brush accessory with thicker garments like coats for better steam penetration and a smoother finish.

## Detachable water tank



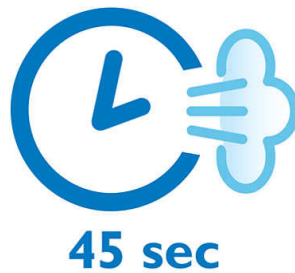
Detachable water tank for easier filling.

## Ergonomic design



The handheld steamer is light and comfortable to use thanks to the ergonomic and compact design. Just press the trigger and quickly remove creases with continuous steam.

## Fast heat up time



The steamer is ready to use within seconds.

## Steam kills bacteria



Hot steam kills up to 99.9% of bacteria on clothes and helps delaying washing or dry cleaning\*.

## Removes unwanted odors



Powerful steam removes cigarette, food and body odors.

## Safe on all garments



The steamer is safe to use on all fabrics. It is a great solution for delicate fabrics like silk.

# Specifications

## Easy to use

- Heat up time: less than 1 minute(s)
- Safe for all fabrics: Even for delicates like silks
- Water tank capacity: 60 ml
- Power cord length: 2 m

## Fast & powerful crease removal

- Continuous steam output: up to 20 g/min
- Power: 1000 W
- Steam output

## Technical specifications

- Product dimensions: 34.7 x 12.9 x 12.2 cm
- Packaging dimensions: 38 x 12 x 15 cm
- Voltage: 220 V
- Weight of product: 0.660 kg
- Weight of product with package: 0.890 kg

## Accessories

- Brush

## Calc management

- Suitable for tap water



Issue date 2021-12-18

Version: 1.1.2

© 2021 Koninklijke Philips N.V.  
All Rights reserved.

Specifications are subject to change without notice.  
Trademarks are the property of Koninklijke Philips N.V.  
or their respective owners.

[www.philips.com](http://www.philips.com)

\*\* Tested by external body for bacteria types Escherichia coli 8099,  
Staphylococcus aureus ATCC 6538, Candida albicans ATCC  
10231 with 8 minutes steaming time.