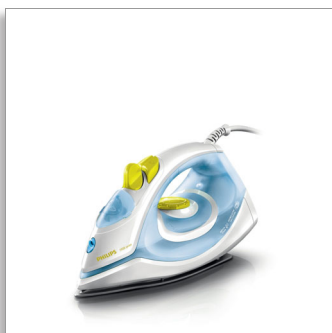




Philips 1900 series
Steam iron

Steam 14g/min;80g steam boost

Blue Ceralon soleplate
Anti-calc
1700 Watts



GC1960

Faster - from start to finish

Iron with fast water filling and emptying

There's so much more to life than household chores, so you want to get them done as quickly as possible. This quality Philips iron GC1960/02 has a super fast filling and emptying hole, pointed tip, and smooth-gliding soleplate.

Easy gliding on all fabrics

- Non-stick soleplate coating

Longer lifetime

- Double Active Calc System prevents scale build-up

Easily removes creases

- Vertical steam for crease removal in hanging fabrics
- Steam boost to remove stubborn creases easily
- Continuous steam output up to 14 g/min

Faster set-up and storage

- Easy and super fast filling of the watertank
- Easy and super fast emptying of the watertank

PHILIPS

Steam iron
Steam 14g/min;80g steam boost Blue Ceralon soleplate, Anti-calc, 1700 Watts

Highlights

Non-stick soleplate



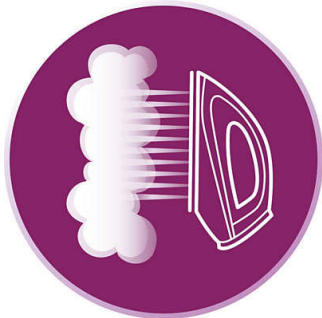
The soleplate of your Philips iron is coated with a special non-stick layer for good gliding performance on all fabrics.

Double Active Calc System



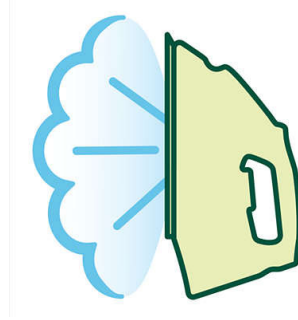
Double Active Calc system of your Philips steam iron prevents scale build-up through anti scale pills and an easy to use calc clean function.

Vertical steam



This Philips iron has a vertical steam function, for crease removal in hanging fabrics.

Steam boost



Steam boost to remove stubborn creases easily.

Continuous steam output

Continuous steam output up to 14 g/min

Easy and super fast emptying



Easy and super fast emptying of the watertank thanks to the huge emptying hole, and the sideways opening door.

Easy and super fast filling



Easy and super fast filling of the watertank thanks to the huge filling hole, and the sideways opening door of the Philips iron.

GC1960/02

Specifications

Easy to use

- Filling and emptying water: Sideways opening door, Extra large filling hole
- Water tank capacity: 180 ml
- Cord freedom (swivel): 180 degree cord freedom
- Power cord length: 1.8 m

Fast & powerful crease removal

- Continuous steam output: 14 g/min
- Soleplate: Blue Ceralon
- Power: 1700 W
- Steam output
- Vertical steaming
- Spray
- Steam boost: 80 g
- Steam tip
- Variable steam settings

Technical specifications

- Product dimensions: 26.1 x 11.5 x 13.6 cm
- Weight of iron: 1.06 kg
- Voltage: 220 V

Calc management

- Suitable for tap water
- Calc clean solution: Double active calc clean



Issue date 2021-11-11

Version: 1.1.1

© 2021 Koninklijke Philips N.V.
All Rights reserved.

Specifications are subject to change without notice.
Trademarks are the property of Koninklijke Philips N.V.
or their respective owners.

www.philips.com