

PHILIPS

Service
Manual

**Airflow
Max**
technology



3000 Series

XD3010/61



Contents

General information	3
Performance	
Filtration	
Usability	
Nozzles and accessories	
Sustainability	
Weight and dimensions	
Optional (accessories)	
Technical information	4
Production date (or serial number)	
Electrical diagram	
Disassembly - and Reassembly advice	5
Disassembly	
Reassembly	
Service parts	8
Version history	15

Important repair instructions

- Only skilled personnel should carry out the repair.
- After repair the appliance should function properly.
- After repair the appliance has to meet the regulatory – and safety requirements that were applicable at the time of release of the model.
- After repair the appliance always has to be tested for electrical safety according VDE 0701 – 0702 and for medical products IEC 62353.

General information



Performance

- Input power (IEC) : 1800 W
- Input power (max) : 2000 W
- Sound power level : 83 dB
- Vacuum (max) : 26 kPa

Filtration

- Dust bag type : S-bag Classic Long Performance
- Exhaust filter : Super Clean Air filter
- Motor filter : 1 layer foam filter

Usability

- Action radius : 9 m
- Carrying handle : Front
- Cord length : 6 m
- Tube coupling : ActiveLock
- Tube type : Metal 2-piece telescopic tube
- Wheel type : Rubber

Nozzles and accessories

- Accessories included : Crevice tool, Integrated brush
- Standard nozzle : ExtraClean nozzle

Sustainability

- User manual : 100% recycled paper
- Packaging : > 90% recycled materials

Weight and dimensions

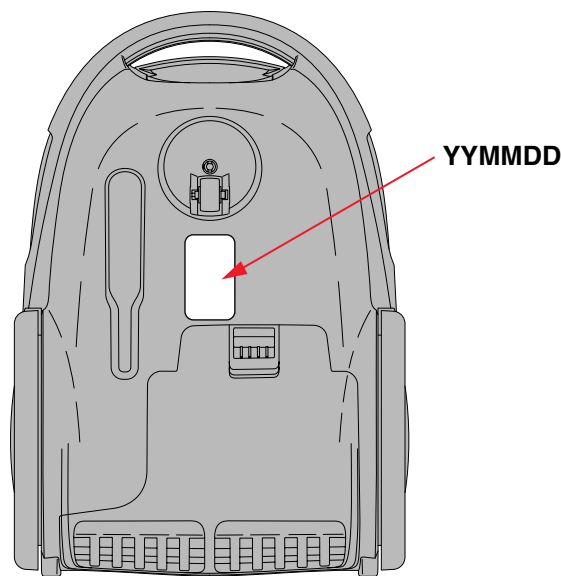
- Dimensions of product : 400 x 282 x 251 mm
- Weight of product : 4.8 kg

Optional (accessories)

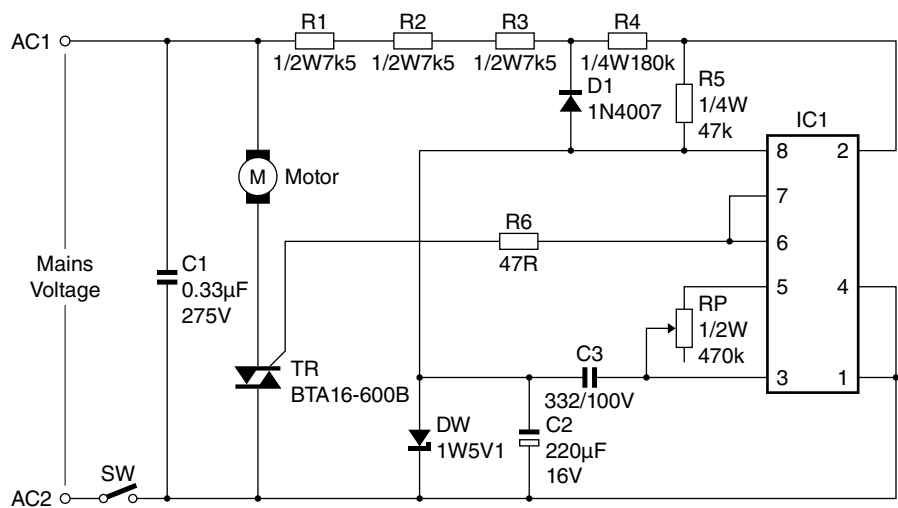
- Filter Replacement Kit HP :
3000 052 95741 CP1203/01
- Alma HF nozzle Con. 35 mm PH Deep Black
4322 004 26051 CP0189/01
- Turbo brush 35 mm Deep Black
4322 004 26231 CP0191/01

Technical information

Production date (or serial number)



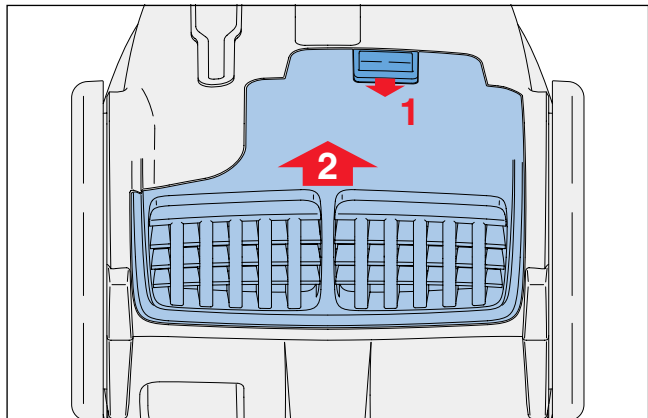
Electrical diagram



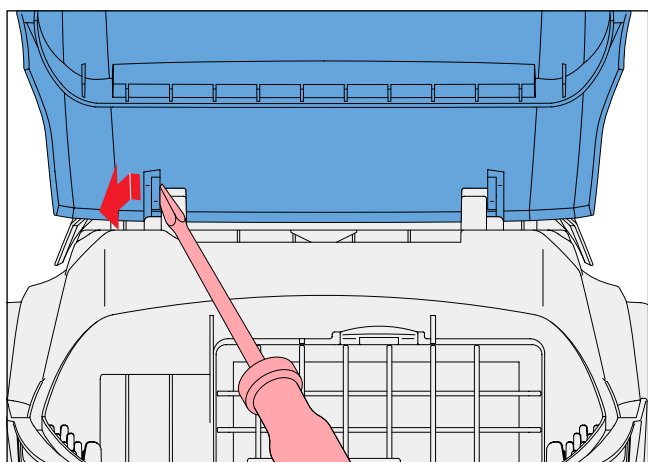
Disassembly - and Reassembly advice

Disassembly

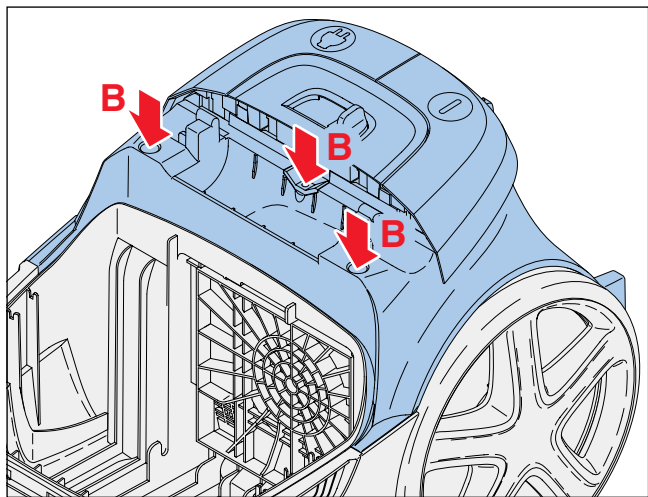
- To remove the Exhaust filter (12):
Turn the appliance upside down, push the blue button and remove the Exhaust grill (13), now the Exhaust filter can be removed / replaced by a new one. (see picture)



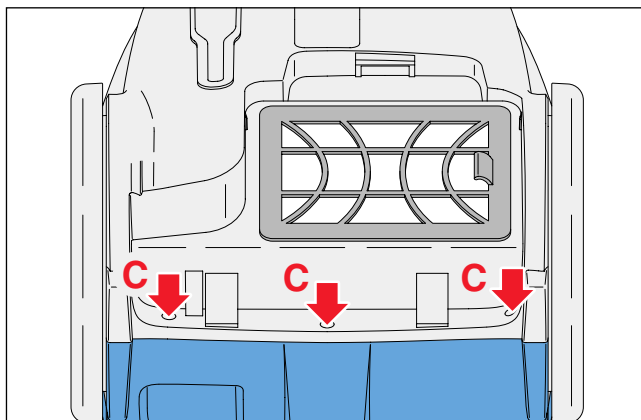
- Remove the dustcover assy (7) using a screwdriver (see picture).



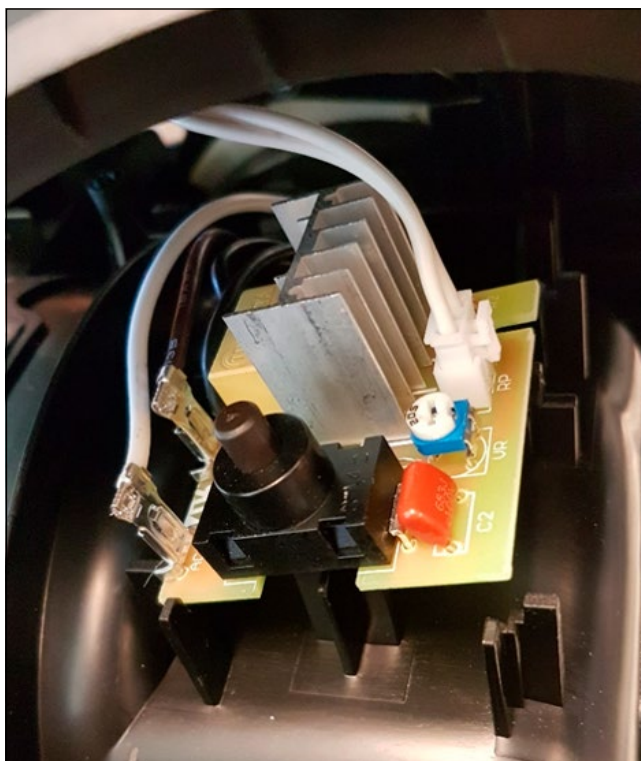
- To remove the Top housing:
Remove the 3 screws (B). (see picture)



- Turn the appliance upside down and remove the 3 screws (C) on the bottom (underneath the Exhaust grill). (see picture)

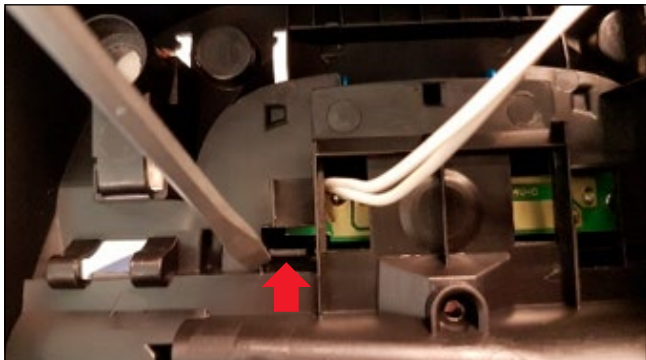


- Lift the Top housing by using a screwdriver on the backside, place it between Lower housing and Top housing. (Remark: buttons do not need to be removed).
- When you take off the upper housing you have to be careful that the connector of the potmeter is not disconnected. Remove the connection for the potmeter then the housing can be removed.

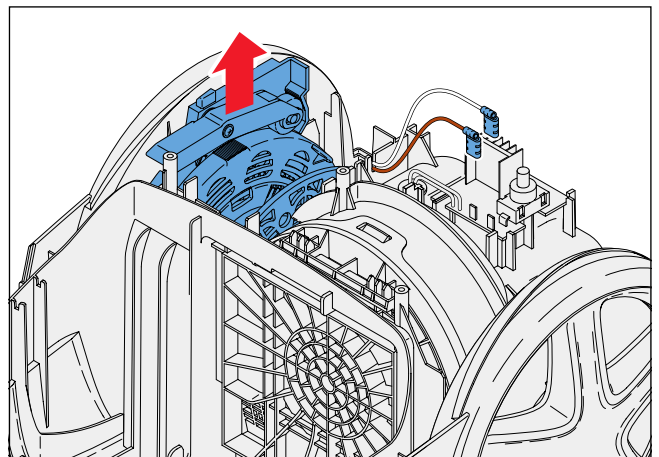


Disassembly - and Reassembly advice

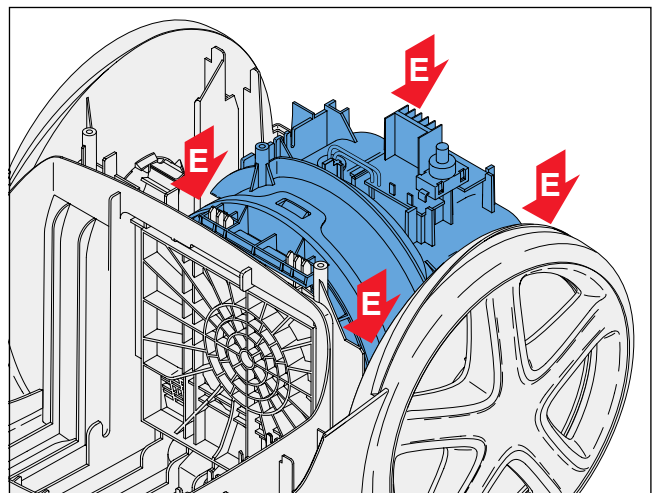
- The panel can be removed by clicking hooks using a screwdriver. Works the same as with the predecessor.



- To re-assemble the Top housing: make sure that the sealing rim does not come below the Top housing, it should be placed after the Top housing is placed.
- Remove Cordwinder Lever.
- Remove Cordoutlet.
- Disconnect the 2 connectors from the PCB and remove Cordwinder assy (26). (see picture)



- To remove the Motor housing: Remove the 4 screws (E), for 2 of the screws an extra long screwdriver is needed. (see picture)



Disassembly – and Reassembly advice

- Now the Motor housing can be removed by lifting: Grip on back side with one hand, with other hand push down in the Dust chamber.
- To replace the motor (**37**) and PCB (**32**):
The PCB is connected to the Motor with 2 wires through the Motor housing.
Remove the Motor housing Cover by unclicking the 3 clicks.

Watch out: Valve assy spring jumps out !

Remove the Motor rubber (**38**).

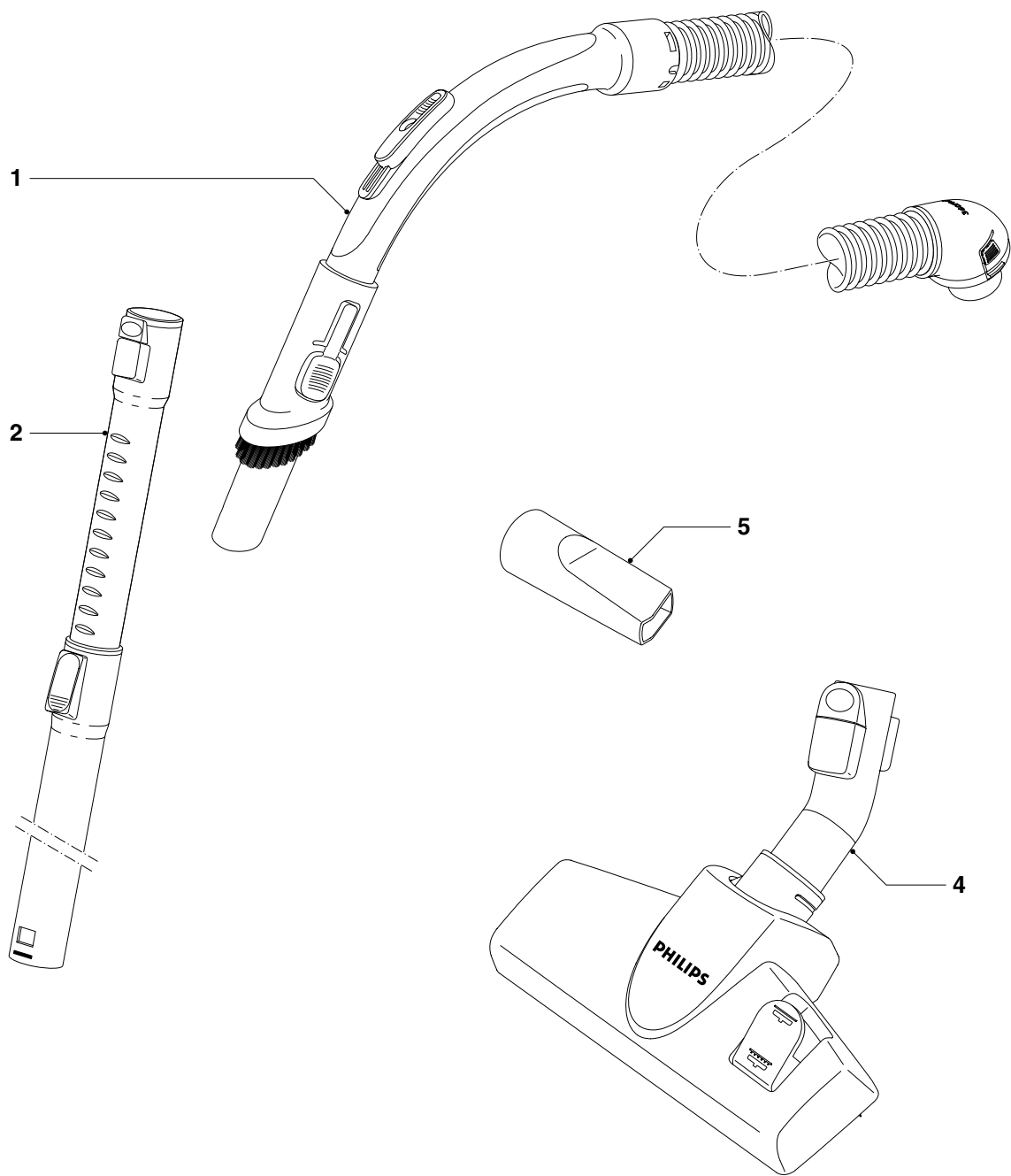
Pull the motor to the outside and remove the 2 wires **X** and **Y** connected to the PCB.

Now the motor and PCB can be replaced.
(see exploded view)

Reassembly

- The Motor rubber needs to be replaced correctly, safety valve can be replaced and afterwards the Motor housing cover can be clicked on.
- Replace Motorassy in the Lower housing.
- Fix all the screws (**E**).
- Replace the Cordwinder assy and reconnect de 2 wires to the PCB on the Motor housing.
- First leed the cord through the Cord outlet, then the Cordwinder assy can be replaced.
- Keep the cable and plug in its original position!!!
- Replace the Top housing and fix all the screws (**B**) and (**C**).
- Now the Dustcover assy can be replaced by using a screwdriver.
- **Remark:** Safety valve **cannot** be supplied separately, make sure that this can be re-used.

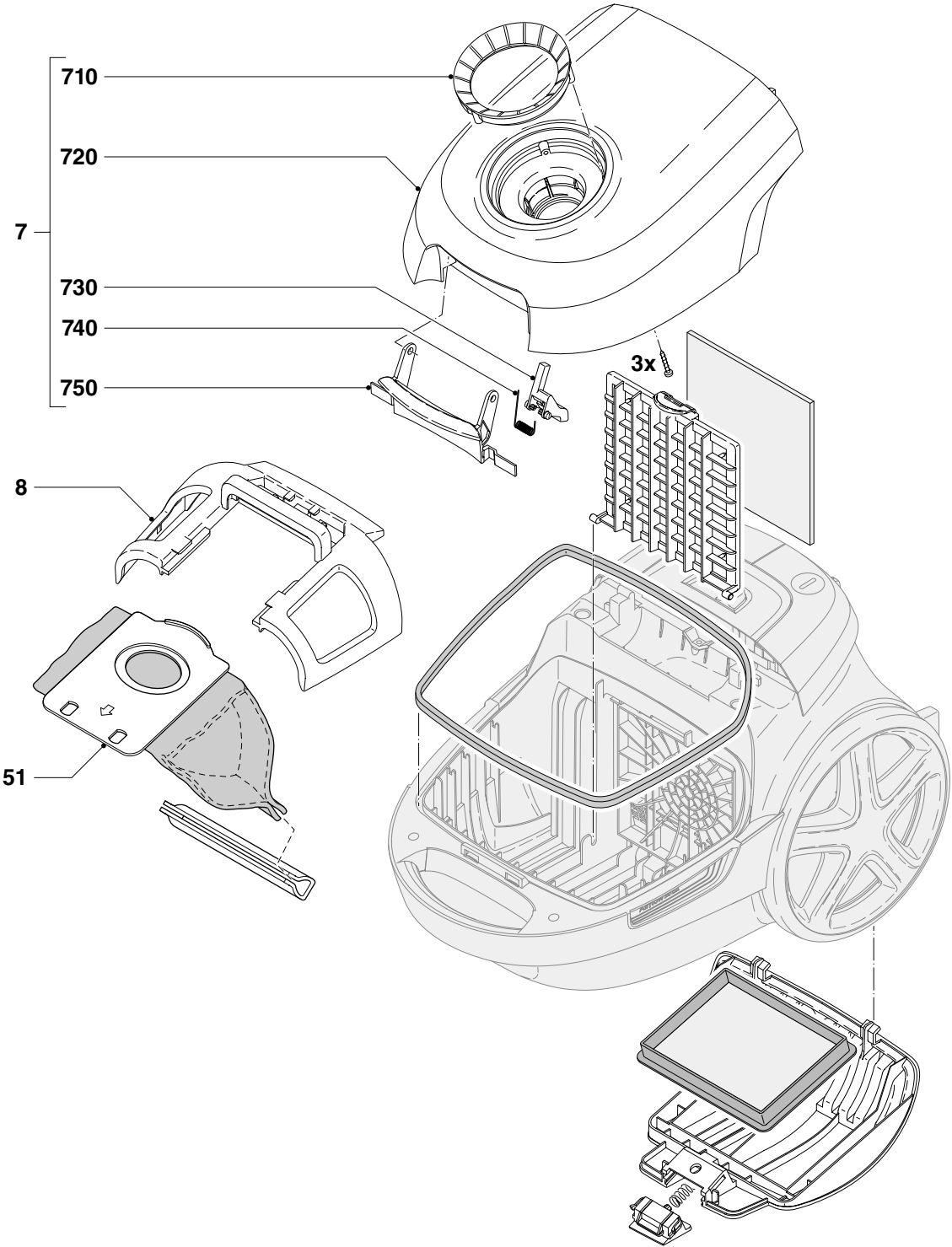
Service parts



Pos	Service code	Description	Remark	CRP
1	3000 053 22101	Hose assy	Zeta	CP0187/01
2	4322 004 26244	2 - Piece TT tube	Active lock	
4	4322 004 26224	Multi - purpose Active lock	35 mm Deep Black	CP0188/01
5	4322 004 26201	Crevice tool	35 mm Deep Black	
50*	3000 052 95741	Filter Replacement Kit HP	Not shown	CP1203/01

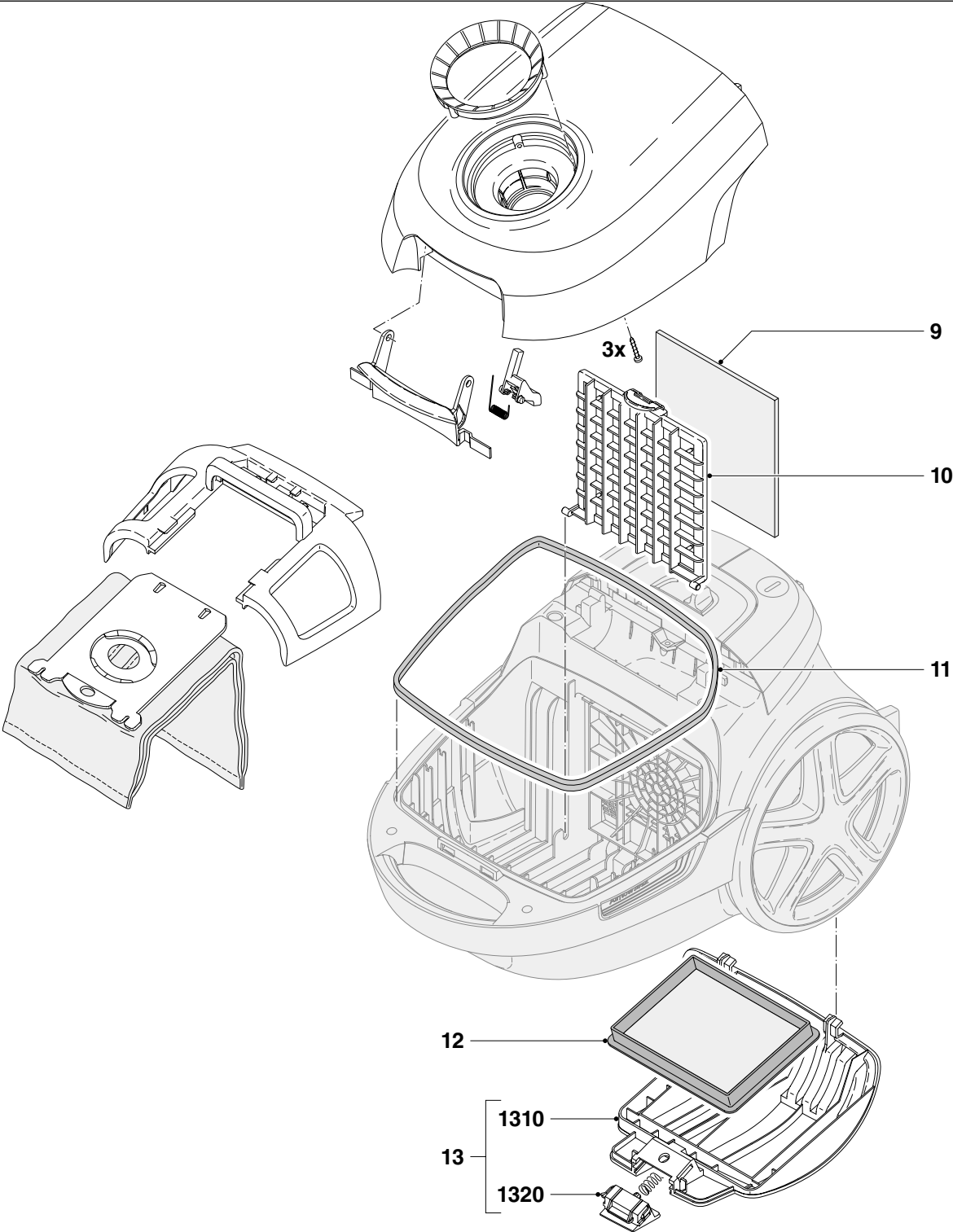
* Consisting of 2 filters and a dust bag

Service parts



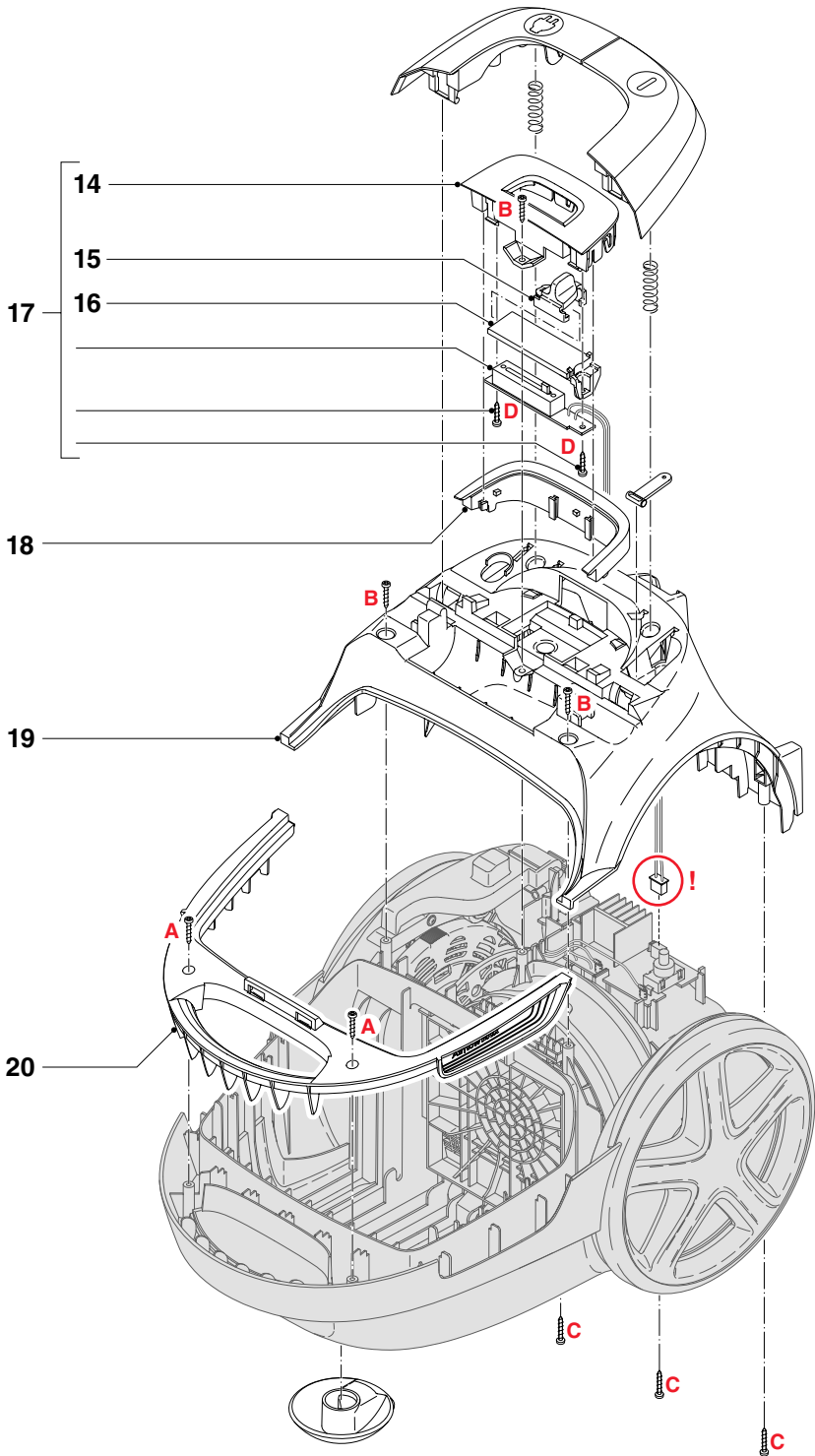
Pos	Service code	Description	Remark	CRP
7	3000 056 91571	Dust cover assy	Dark Royal Blue 161377	
710				
720				
730				
740				
750				
8	3000 054 29761	Dust bag holder Zeta	Basic Blue 61192	
51	4322 004 93372	Cotton Dustbag assy		

Service parts



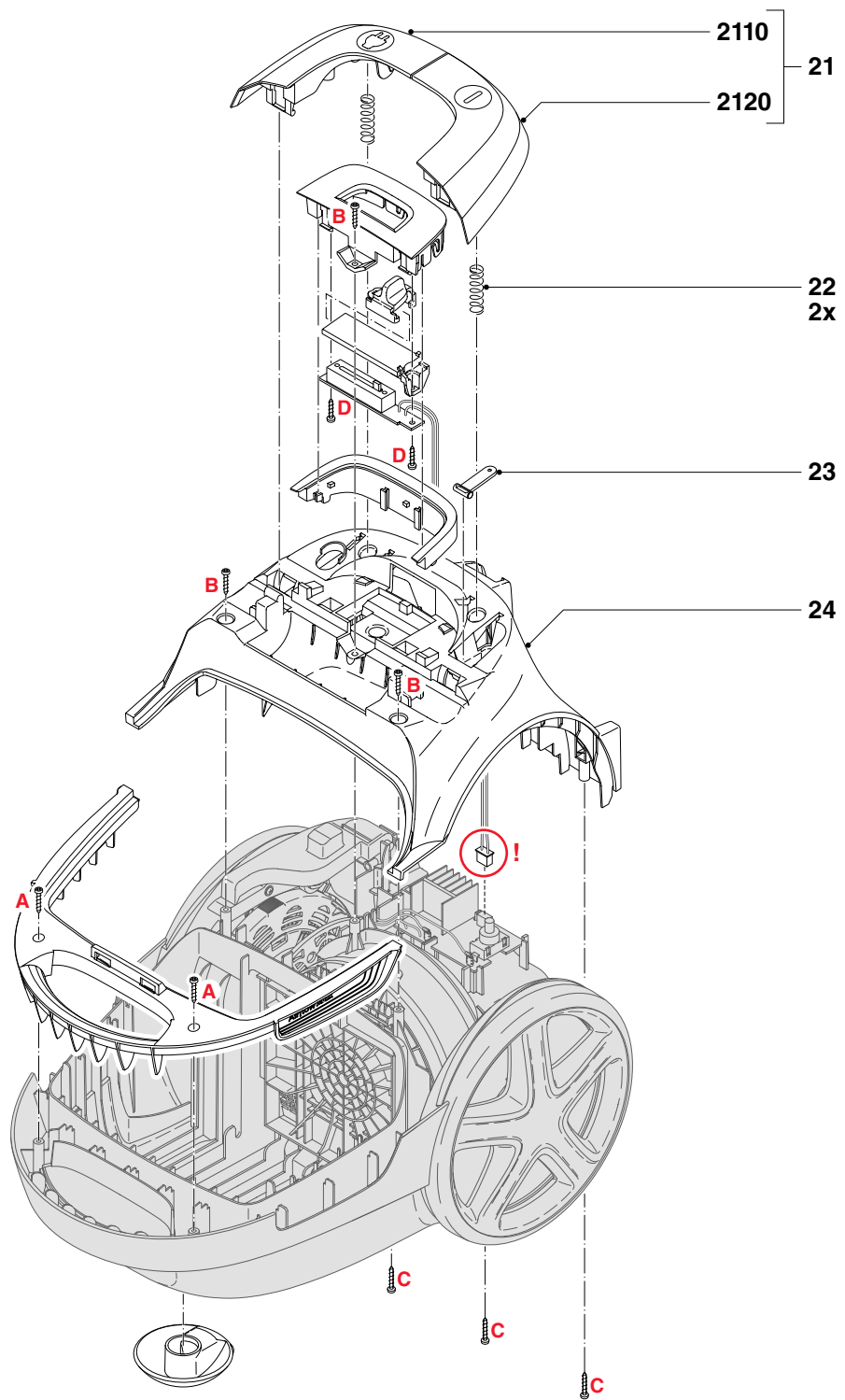
Pos	Service code	Description	Remark	CRP
9	4322 004 94331	Inlet filter	Performer Compact	CP1056/01
10				
11	9965 100 73735	Sealing rim Dust chamber		
12	4322 004 94351	Scouring pad	Performer Compact	
13	3000 053 42991	Exhaust grill assy		
1310				
1320				

Service parts



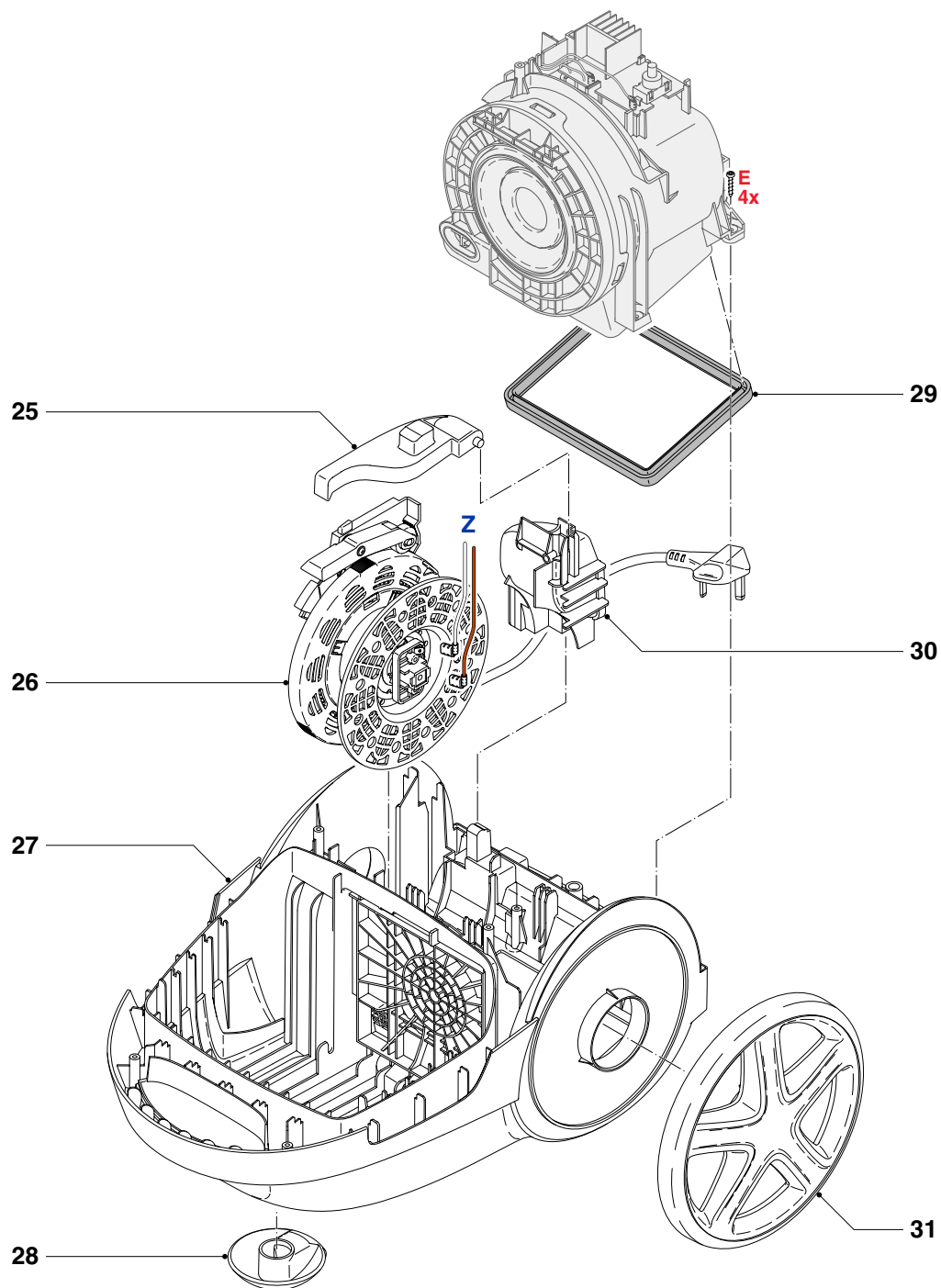
Pos	Service code	Description	Remark
14	9965 100 74796	Non -lighting version panel	
15			
16			
17	3000 053 80541	Potmeter assy	Zeta
18			
19	3000 059 19781	Rear cover	
20			

Service parts



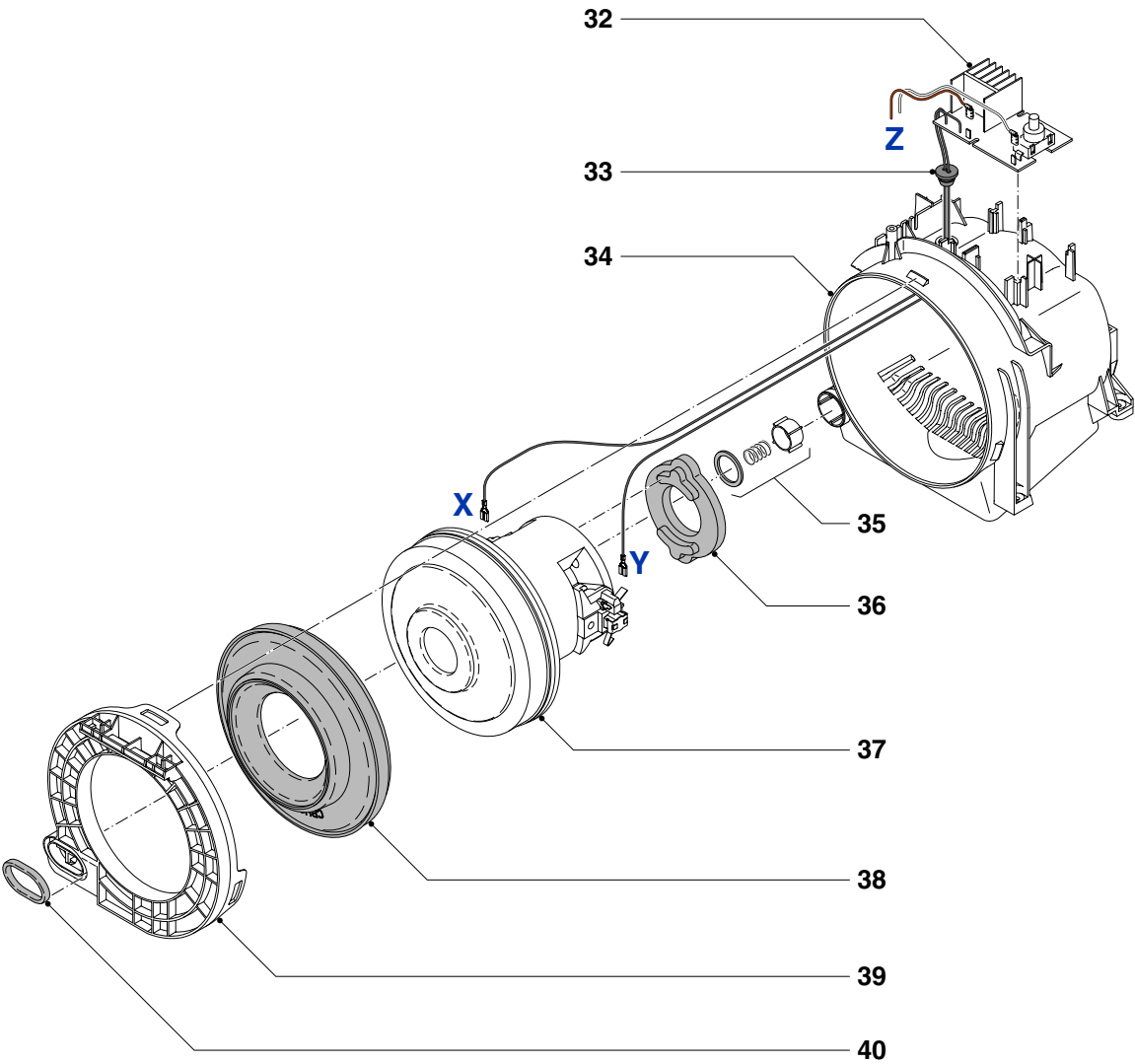
Pos	Service code	Description	Remark
21	3000 053 42521	On/Off button & CW button	
2110			
2120			
22			
23			
24			

Service parts



Pos	Service code	Description	Remark
25			
26	3000 054 06571	Cordwinder Zeta HP	1.0 mm/6 m/UK plug
27	9965 100 73737	Lower housing	
28	9965 100 73751	Caster assy	
29			
30	9965 100 77912	Cord outlet	
31			

Service parts



Pos	Service code	Description	Remark
32	3000 053 76881	PCBA No Light guide	Zeta HP
33			
34			
35			
36			
37	3000 050 76751	Chunju Motor CPH90	1800 W 240 V
38	9965 100 73748	Rubber ring Motor	
39			
40			

Version history

20/10 Version 1.1 : XD3010/61 initial release.

20/11 Version 1.2 : Parts list and exploded view updated.

22/08 Version 1.3 : Exploded view: Changed Pos. 14-17.



www.philips.com