

# PHILIPS

Sonic electric  
toothbrush

3100 series

Sonic technology

Pressure sensor

QuadPacer and SmarTimer

Slim ergonomic design



HX3671/23



Goodbye manual toothbrush. Hello Sonic technology.

Up to 3x better plaque removal\*

Sonic technology combined with our brush action gently removes plaque up to 3x better\* than a manual toothbrush.

**Provides superior clean**

- Our unique technology brings you a powerful yet gentle clean
- Up to 3x better plaque removal vs a manual toothbrush\*

**Protects your gums**

- Built-in pressure sensor protects your teeth & gums

**Optimize your brushing**

- Optimize your brushing with SmarTimer and QuadPacer

**Designed around you**

- Always know when to replace your brush heads
- 14-day long lasting battery life
- Ergonomic design makes the toothbrush easy to hold and use
- Use less. Reuse more

**Easy transition to Sonicare**

- Easy-Start to ease the transition

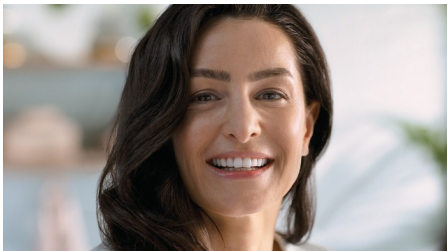
# Highlights

## Advanced Sonic Technology



Powerful bristle vibrations drive microbubbles deep between your teeth and along your gum line for a refreshing experience. You will get two month's worth of manual brushing in just 2 minutes.\*\* 31000 brush strokes per minute gently clean your teeth, break up plaque, and sweep it away for an exceptional daily clean.

## Removes plaque 3x better\*



The Sonicare electric toothbrush with advanced sonic technology is clinically proven to remove plaque up to 3X better\* than a manual toothbrush. It removes plaque from your teeth and along the gum line while protecting your gums.

## Protects your gums



Built-in pressure sensor automatically detects pressure you apply, warns you, and reduces the toothbrush vibrations automatically to help

protect your gums. The toothbrush will make a pulsing sound as a reminder to ease off the pressure. 7 out of 10 people found this feature helped them become better brushers.

## SmartTimer and QuadPacer



2 minute SmartTimer and 30-second QuadPacer guide you to brush for the recommended time in all areas of your mouth to ensure a complete clean.

## Designed around you



Slim, light-weight, and ergonomic design makes the toothbrush easy to hold and use so that you can get an amazing clean without any strain.

## BrushSync replacement reminder



All brush heads wear out over time, so you'll want to keep an eye on yours to make sure you're still getting a great clean. Our

BrushSync technology tracks how long you've been using your brush head for, and how hard you've been brushing. The BrushSync replacement reminder on your handle and a short beep gives you a heads up when it's time to replace it.

## Easy-Start



Our Easy-Start program gives you the option of a gradual, gentle increase in brushing power the first 14 times you use your new toothbrush.

## Long lasting battery life



Battery life lasts up to 14 days so you can go long periods without charging.

## Goodbye adapter. Hello USB.

Power adapters may seem small, but added together, their plastics make a huge impact on the environment. By switching to USB charger in our Philips Sonicare 1000-4000 Series alone, we can use up to 189,210 kg less plastic every year. That's powerful, right?

# Specifications

## Modes

**Clean:** For exceptional everyday clean

## Items included

**Handle:** 1 3100 Series

**Brush heads:** 1 C2 Optimal Plaque Defence

**Charger:** 1

## Design and finishing

**Color:** White

## Cleaning performance

**Performance:** Removes up to 3x more plaque\*

**Pressure feedback:** Vibrates handle to alert user

**Timer:** Quadpacer and SmarTimer

## Smart sensor technology

**BrushSync Replacement Reminder:** Always know when to, replace brush heads

**Pressure sensor:** Alerts when brushing too hard

## Ease of use

**Handle:** Slim ergonomic design

**Battery indicator:** Light shows battery status

**Brush head system:** Easy click-on brush heads

**BrushSync Replacement Reminder:**

Replacement reminder, Always know when to, replace brush heads, Reminder icon lights up, to always ensure best results

## Technical specifications

**Battery:** Rechargeable

**Battery type:** Lithium ION

**Operating time (full to empty):** 14 days\*\*\*\*\*

## Power

**Voltage:** DC5V

## Service

**Warranty:** 2-year limited warranty

