

PHILIPS

sonicare

Standard sonic
toothbrush heads

W2 Optimal White

2 pack

Standard size

Click-on

BrushSync mode pairing

HX6062/67



Up to 100% whiter teeth in just one week*

Advanced cleaning for stain removal & whiter teeth

The W2 Optimal White brush head is perfect for those who want to go beyond deep cleaning to remove surface stains for a white, radiant smile. This brush head is also great for maintaining brightness between professional whitening treatments

For exceptionally whiter teeth

- Diamond-shaped bristles give you 100% whiter teeth in 1 week

For exceptional care of teeth and gums

- Up to 7x more plaque removal than a manual toothbrush

Innovative technology

- Automatically selects optimal mode for ultimate results**
- Philips Sonicare's advanced sonic technology

Designed to optimize performance

- Always know when to replace. Always get an effective clean.
- Tested to meet your oral health needs
- Click-on design for simple brush head placement

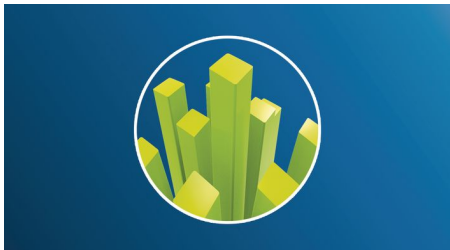
Highlights

Say goodbye to plaque



Densely-packed, high-quality bristles remove up to 7x more plaque than a manual toothbrush.

Whiter teeth, fast



The W2 Optimal White's stain-removal pad, made from densely-packed diamond-shaped bristles, removes surface stains caused by food and drinks. You'll notice a whiter smile, up to 100%*, in just 7 days.

BrushSync™ mode-pairing



You'll always get the best possible clean with our BrushSync™ mode-pairing feature**. The Philips Sonicare W2 Optimal White brush head

syncs with your BrushSync™ enabled Philips Sonicare toothbrush handle**, selecting the optimal brushing mode and intensity level for exceptional whitening. All you need to do is start brushing.

Brush head replacements



Brush heads become less effective after 3 months of use, but with BrushSync™ you'll be reminded before this happens. Your smart toothbrush will track how often and how hard you brush, and will notify you when it's time for a replacement. Don't have a smart Philips Sonicare toothbrush? Just monitor your blue replacement bristles, and when they turn white you'll know it's time for a fresh brush head.

Brushing with peace of mind



All Philips Sonicare brush heads are safe and gentle on teeth and gums. During tests, each brush head is put through its paces to ensure durability and an exceptional performance every time you brush.

Philips Sonicare technology



Philips Sonicare's advanced sonic technology pulses water between teeth, and its brush strokes break up plaque and sweep it away for an exceptional daily clean.

Easy to click-on



Your W2 Optimal White brush head fits perfectly with any Philips Sonicare toothbrush handle, except Philips One and Essence. Simply click on and off for easy replacement and cleaning.

Specifications

Items included

Brush heads: 2 W2 Optimal White standard

Compatibility

Brush head system: Click-on

BrushSync mode-pairing

Suitable for these models: 2 Series plaque control, 2 Series plaque defense, 3 Series gum health, DiamondClean, DiamondClean Smart, EasyClean, Essence+, FlexCare, FlexCare

Platinum, FlexCare Platinum Connected, FlexCare+, for Kids, HealthyWhite, HealthyWhite+, PowerUp, ProtectiveClean

Design and finishing

Bristle stiffness feel: Medium

Color: White

Reminder bristles: Blue bristle color fade away

Size: Standard

Quality and performance

Replacement: Every 3 months

Tested: for optimal usage

Health benefits

Gum health: Helps improve gum health

Plaque removal: Removes up to 7x more plaque*

Whitening: Whiter teeth in just one week

