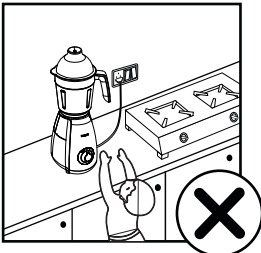


#### 4.0 Important instructions

We recommend that you read the following instructions carefully, before using the appliance.

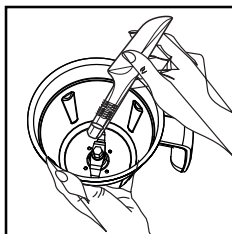
- Check if the voltage indicated on the base of the appliance, corresponds to the local electrical mains voltage before you connect the appliance.
- Do not use the appliance when the mains cord, the plug or other components are damaged. Only the company or a service centre authorized by Philips must replace it.
- Always unplug the appliance after use.
- Never immerse the base unit in water or any other liquid. Do not rinse it either.
- Always unplug the appliance before reaching in to the jar with your fingers or an object e.g. spatula.
- The appliance is not intended for use by persons (including children) with reduced physical, sensory or mental capabilities or lack of experience and knowledge, unless they have been given supervision or instruction concerning use of the appliance by a person responsible for their safety. Children should be supervised to ensure that they do not play with the appliance.
- Always ensure that speed selector knob is at position before fixing accessories.
- Do not operate the mixer without the dome or lid in place or with an empty jar.
- Handle the blades carefully. Wash them under running water and do not rub by hand.
- Do not use mixer on wet surface.
- Do not run mixer for more than 30 minutes continuously.
- Keep mixer away from hot gas burner, electric hot plate or similar appliances.
- This appliance is strictly for household use.
- Do not drop base unit or jar.
- Never use accessories or parts not recommended by Philips or those made by other manufacturers else the warranty will become invalid.
- Do not use the jars as storage containers.
- Do not leave unit unattended while in operation.



#### 5.0 Using the product

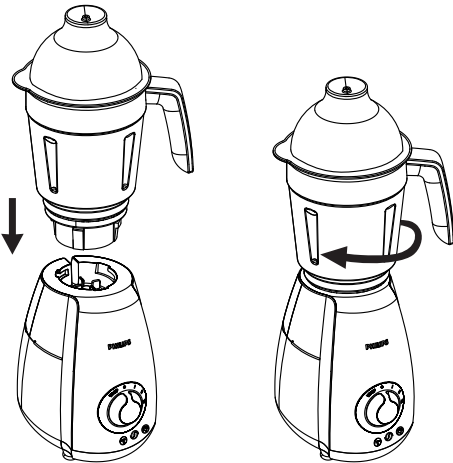
##### 1. How to fit the blades

Hold the coupler on the underside of the jar and with the spanner; tighten by rotating in anti-clockwise direction till the blade is securely locked. Repeat procedure for the other jars.



##### 2. How to fit jar to base unit

After fitting the blades carefully insert the jar on top of the base unit. Ensure that lock of the jar fits the slot of the base unit. Rotate the jar clockwise until it locks.



#### 6.0 Operation

##### 1. Before the first use

Thoroughly clean parts that come in contact with food.

##### 2. Preparation for use

Cool the hot ingredients before putting in jar.

Cut large ingredients into small pieces of approx 2cm before processing.

at mains plug to wall socket after fixing jar. Switch on main supply. Turn speed selector to required position and speed. After operation, turn selector knob to and check. Repeat till desired results are obtained.

For blending/liquidizing/ pureeing use 'WHIP' on speed knob. This will activate the whipping till you release the button.

#### 9.0 Warranty and Service

For any information or problem, contact your local Philips dealer or authorized service center. For a list of authorized Philips service centers visit: [www.philips.co.in](http://www.philips.co.in) or contact our consumer care at 1800 102 2929 (Toll free) or 1860 180 1111 (standard call rates apply)

##### 9.1 Warranty Card

The apparatus is covered under warranty against any defect due to defective material or workmanship for TWO YEARS on the Mixie and FIVE YEARS on the motor from the date of purchase. FIVE YEARS warranty on the motor does not cover damage to the Mixie/Motor due to mishandling, negligence, breakage or cracking of transparent jars, domes, lids, mixie body and cap and denting stainless steel jar. Should a defect develop during the period of warranty, Philips Domestic Appliances India Ltd. undertakes to repair the apparatus FREE OF CHARGE through the dealer from whom it has been purchased or at any of the Philips authorized service centers.

##### The warranty is not valid in case:

- Defects caused by improper or reckless use.
- Repairs done by persons other than Philips authorized service center.
- Modifications of any nature made in the apparatus.
- Tampered serial number.
- Incomplete warranty card after purchase.
- Product if used for commercial purpose (i.e. other than domestic use).
- Usage of parts not recommended by Philips or those made by other manufacturers.

All consumables and parts susceptible to normal wear and tear are not covered under warranty.

Week/S.No.

Date of purchase \_\_\_\_\_

Dealer's name \_\_\_\_\_

Dealer's stamp \_\_\_\_\_

Customer's name and address \_\_\_\_\_

Model no. \_\_\_\_\_

Dealer's signature \_\_\_\_\_



[www.philips.co.in](http://www.philips.co.in)  
100% recycled paper

[www.philips.co.in](http://www.philips.co.in)

HL7699/00



5yr  
warranty  
on motor

Mixer Grinder

Please read the guidelines provided in this DfU on important instructions, appliance usage & warranty before using the product.

PHILIPS

#### 7.0 Cleaning and Maintenance

- Remove main plug from wall socket. Do not immerse unit in water.
- Wipe base unit with a damp cloth and non-abrasive liquid cleaner.
- Disassemble other parts after use. Wash them in soapy water, rinse with clean water and dry thoroughly. Do not wash in a dishwasher. Cleaning is easiest done immediately after use.
- Take soapy water in jars, fix jar on motor, run for 10 seconds on 'r' speed and then wash the jar.

- Store mixer grinder standing on its heel in a safe and dry place.

##### 8.0 Overload Protection

Mixer is fitted with an automatic power shut off mechanism to avoid motor burning due to overloading. If mixer stops due to overloading, the red knob at the bottom will come out. Switch off the mixer. Remove excess load from jar. Wait for 2-3 minutes. Press red knob and start mixer again.

#### 9.0 Maximum Jar Capacity

No.	Type of Jar	Wet capacity (rated) max.	Dry capacity (rated) max.
1	1.75L	1.7L	1.9L
2	1.0L	0.4L	0.5L
3	0.5L	NA	0.3L

#### 10.0 Standard Recipes

No.	Recipe	Quantity	Time
1	Urad daal	200g+450ml water soaked for 6-8 hrs. Add 50ml water	1.5 min
2	Garam masala	150g of assorted spices roasted and cooled	2.0 min
3	Wet masala	150g onion + 100g tomato	1.0 min
4	Ginger garlic paste	50g ginger + 50g garlic	1.5 min
5	Milk shake	300ml milk + 50g ice-cream (optional) + 30g Strawberry crush (sugar as per taste)	1.0 min
6	Tomato Puree	250g medium sized tomatoes cut in 4's	1.0 min
7	Lassi	250g curd + salt / sugar (as per taste) + crushed ice	30 sec

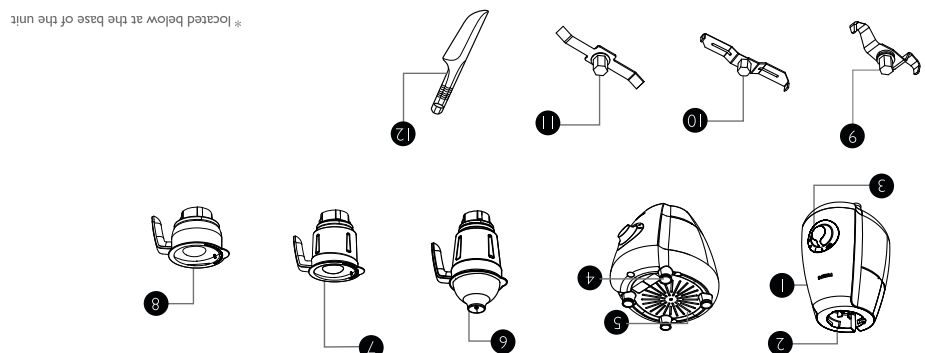
For wet/dry/chutney grinding use speed 'I' and speed 'II' for 10-15 seconds, thereafter use speed 'III' till you finish grinding. Remove the plug from the socket after use.



In case these measures do not work, contact the nearest Philips service center or call at customer care numbers.

Problem	Cause	Solution
1. Appliance does not work.	No electricity supply.	Ensure that the plug is plugged in well.
2. Appliance suddenly stops working while in use.	The appliance is equipped with an 'Over Load Protector' (OLP) switch. If appliance overheats, it automatically cuts off power supply.	Unplug appliance and let it cool for 2-3 minutes. Remove jar from base unit. At the bottom of base unit there is a red coloured switch (OLP). Reset OLP by pressing it. Put plug back into wall socket and switch on appliance again (see heading 'Overload Protection').
3. Blade unit is blocked.	The quantity being processed is probably too large.	Switch off appliance. Remove ingredients that are blocking the blade unit.
4. Appliance gives an unpleasant smell during first few times of use.	This is normal for the first few times.	If appliance continues to smell after using a few times: • Ensure that jars are clean and inside it. • Ensure that appliance has been assembled correctly.
5. Appliance makes a lot of noise.	Jar lid has not been properly placed. Jar has not been properly locked. Make sure jar has been properly locked. Remove ingredients from jar and tighten the blade in anti-clockwise direction with spatula.	Make sure lid has been properly placed. Jar has not been properly locked. Make sure jar has been properly locked. Remove ingredients from jar and tighten the blade in anti-clockwise direction with spatula.
6. There are turns from the appliance.	Appliance may have been used for too long.	Switch off appliance and let it cool for 60 minutes.
7. Un satisfactory grinding/ blending/ mixing performance.	Incorrect jar selection. Large size of ingredients.	Use correct jar as per the application. Cut ingredients into appropriate size.
8. Leakage from jar lid.	Gasket has not been fit properly.	Unplug appliance. Remove jar from base unit. Remove lid to check if gasket has been assembled correctly.

#### 3.0 Trouble shooting



- General description
- Base unit: Containing the motor, speed switch, mains cord and overload protector switch
- Guide for jar lock: to aid in locking of jar on base unit.
- Speed selector knob: for different speed adjustment.
- Anti slip rubber feet
- Overload protection switch: \* for blades.
- Chutney grinding blade: detachable
- Wet grinding blade : detachable
- Dry grinding blade: detachable
- Spatula: To clean sides of jars from inside and use as a spanner
- Chutney grinding blades: fixed

Model No.	HL7699/00
Voltage	230V~50Hz, 750W max.
Motor	Universal motor
No load at max. speed	19500 rpm (approx.)
With load at max. speed	11500 rpm (approx.)
Speed Control	Rotary switch with 3 speed and incher
Insulation	Class F
Protection	Class II
Rating	Ordinary Total rated ON time 30 minutes (max.) Continuous ON for 5 minutes (max.) and OFF for 2 minutes (min.)
Rest time 45 minutes	

#### Technical Specifications

Philips brings to you a mixer grinder with 3 steel jars - wet, dry and chutney jar.

#### 1.0 Introduction