



LOR

BARISTA

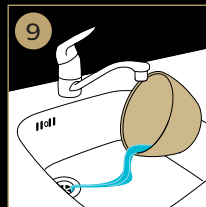
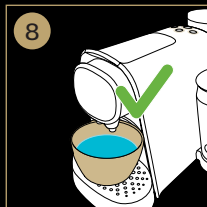
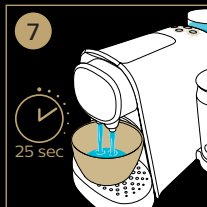
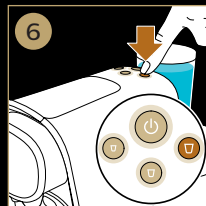
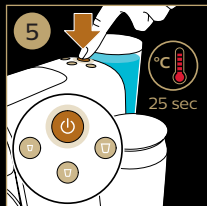
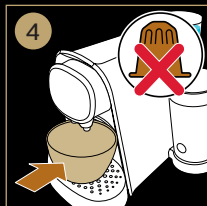
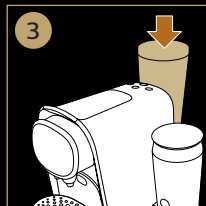
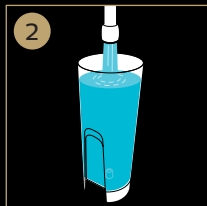
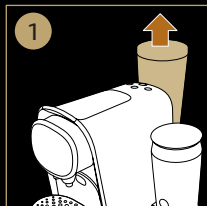




**Support/Asistencia/Assistance/**  
Support/Unterstützung/Assistenza/  
Ondersteuning/Støtte/Suporte/Hjälp

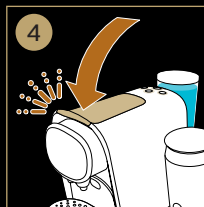
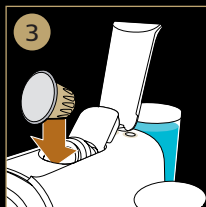
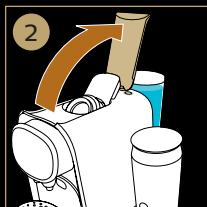
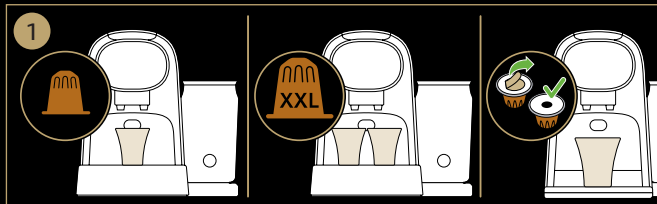


**Before first use/ Antes de utilizarlo por primera vez/ Avant la première utilisation/ Før apparatet tages i brug/ Vor dem ersten Gebrauch/ Primo utilizzo/ Vóór het eerste gebruik/ Før bruk første gang/ Antes da primeira utilização/ Före första användningen**





**Prepare coffee/Preparar café/Préparer le café/Klargør kaffe/Kaffee zubereiten/Preparazione del caffè/Koffie bereiden/Forbered kaffe/Preparar café/Förbered kaffe**

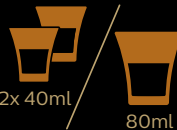


6a Espresso



40ml

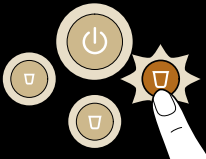
6b Double espresso / Double shot of espresso



2x 40ml

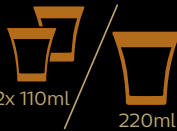
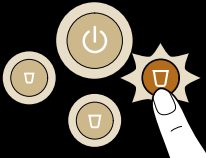
80ml

7a Lungo



110ml

7b Double lungo / Double shot of lungo



2x 110ml

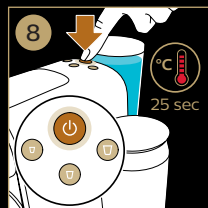
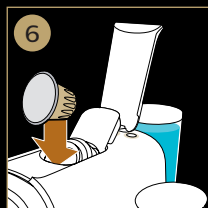
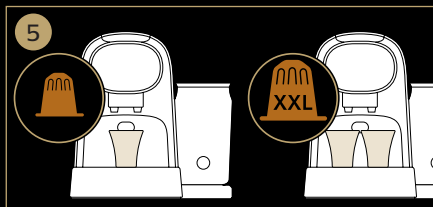
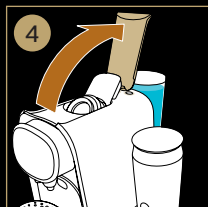
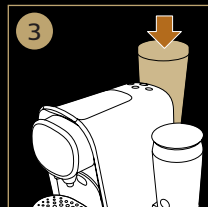
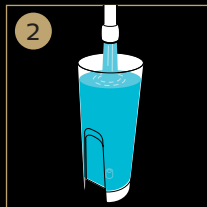
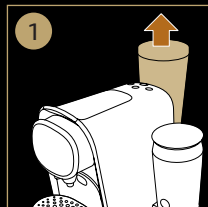
220ml

8 Grand Café Filtre





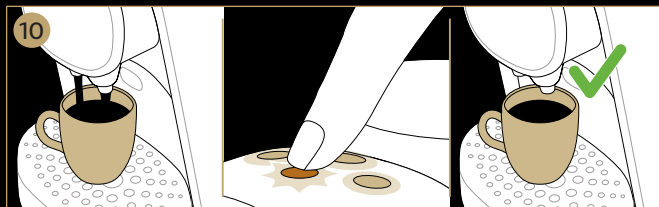
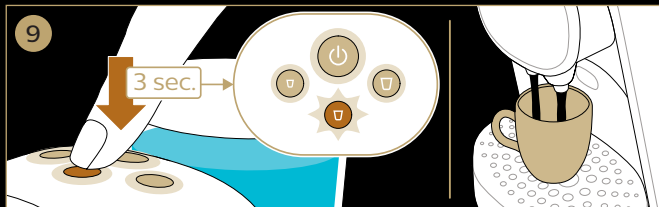
**Drink personalization: program your drink volume/Personalización de bebida: ajuste la longitud de votre boisson/Personlig indstilling: Programmer mængden på din drik/Personalizzazione della bevanda: programma il volume della tua bevanda/Personaliseer mængden drikke/Personalização da bebida: memorize a quantidade da sua bebida/**






## 9 **la cantidad de su bebida/Personnalisation de votre boisson : choisissez**

Personalisieren Sie Ihren Kaffee: Programmieren Sie die gewünschte Getränkemenge/  
er je koffie: programmeer je gewenste koffievolume/Personlige innstillinger: Programmer  
Personliga inställningar: Programera mängden för din dryck

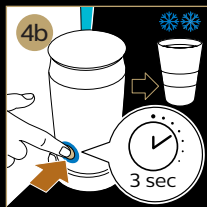
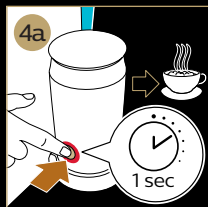
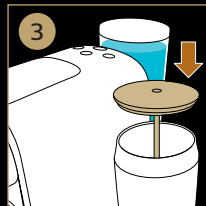
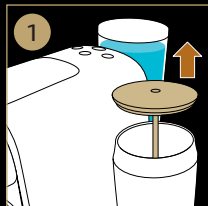


	Standard padrão/estandar	Min.	Max.
Ristretto	25 ml	20 ml	40 ml
Espresso	40 ml	30 ml	50 ml
Lungo	110 ml	50 ml	135 ml

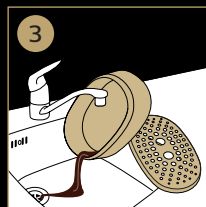
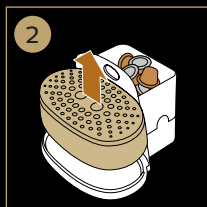
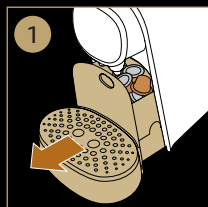
	Standard padrão/estandar	Min.	Max.
Ristretto	50 ml	40 ml	60 ml
Espresso	80 ml	60 ml	100 ml
Lungo	220 ml	100 ml	270 ml

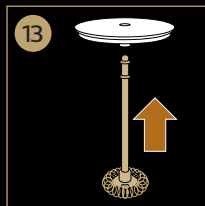
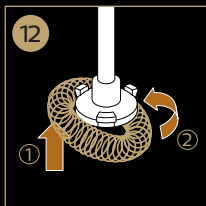
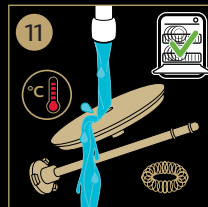
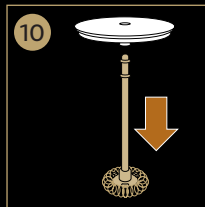
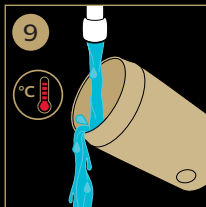
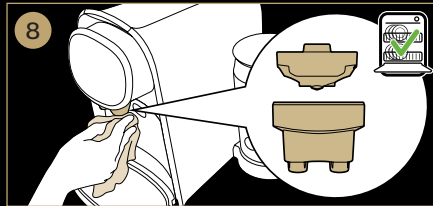
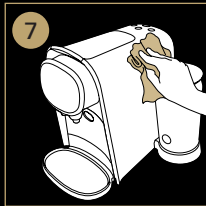
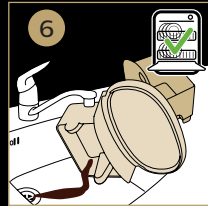
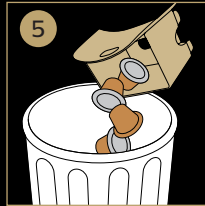
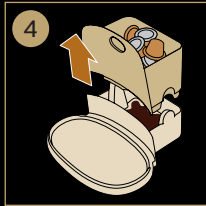


**Prepare milk/Preparar leche/Préparer le lait/Klargør mælk/  
Milch zubereiten/Preparazione del latte/Melk bereiden/  
Forbered Melk/Preparar leite/Förbered mjölk**



**Cleaning/Limpieza/Nettoyage/Rengøring/Reinigung/  
Pulizia/Reinigen/Rengjøring/Limpeza/Rengöring**



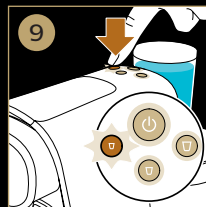
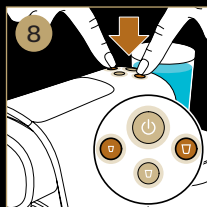
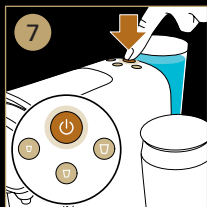
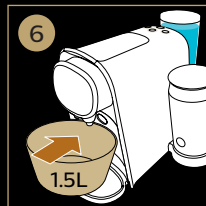
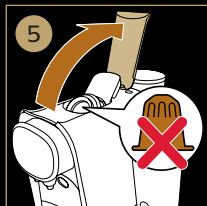
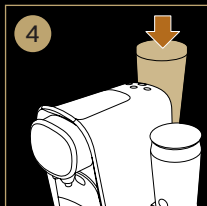
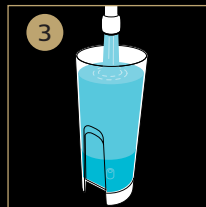
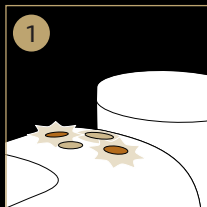


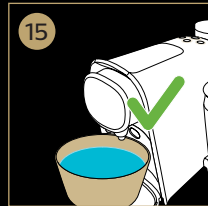
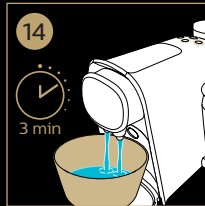
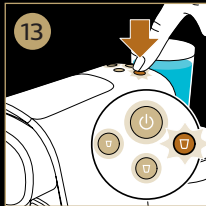
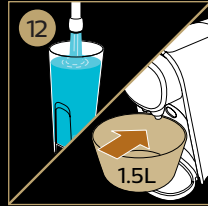
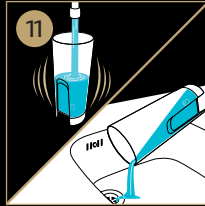
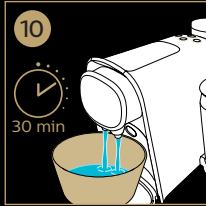


## Descaling/ Eliminación de los depósitos de cal/ Détartrage/

Afkalkning/ Entkalken/ Rimozione del calcare/ Ontkalken/

Avkalkning/ Descalcificação/ Avkalkning







422220007226



4222.200.0722.6