

# PHILIPS

## Stand Steamer

### Easy Touch

1800W, 35g/min

40% larger steam plate\*

80% larger filling hole\*

2 steam settings

GC484/49



## Easy de-wrinkling everyday

With the most compact stand steamer from Philips

Our new EasyTouch garment steamer is designed to be compact yet powerful. This essential steaming solution is great for quick de-wrinkling everyday.

#### Quick de-wrinkling

- 2 steam settings for different types of fabric
- 20% more powerful \* with 35g/min continuous steam
- Compact design for easy storage
- Cover more in one stroke with 40% larger steam plate\*

#### Easy to use and maintain

- 1.4L water tank with 80% larger filling hole\*
- Adjustable pole for various height settings
- Easy Rinse descaling for years of effective use
- Integrated garment hanger

#### Reliable

- Safe to use on all garments
- Steam kills more than 99% of bacteria and dust mites\*
- Glove for extra protection during steaming

# Highlights

## Powerful continuous steam



The EasyTouch steamer is 20% more powerful\* compared to predecessor models with 35g/min of powerful continuous steam concentrated through the nozzles, enabling de-wrinkling with only a few strokes

## 40% larger\* steam plate



The steamer is also quipped with a 40% larger steam plate\* compared to predecessor models. This allows you to cover more fabric area for more efficient steaming sessions.

## Integrated garment hanger



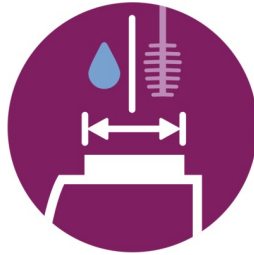
Integrated garment hanger lets you easily hang your garments like shirts, dresses and trousers while using the steamer

## 2 steam settings



Set your preferred steam level for optimal results on different fabrics. Use low steam for thinner fabrics and a more powerful setting for thicker fabrics and coats.

## 80% larger filling hole\*



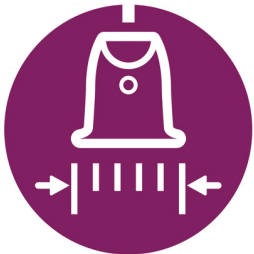
The large 1.4L detachable water tank comes with an 80% larger filling hole\* compared to predecessor models, enabling easier refilling and cleaning for better tank hygiene.

## Safe to use on all garments



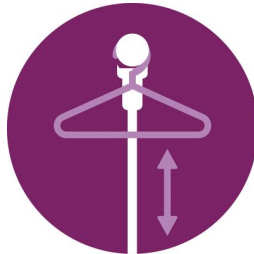
The steamer is safe to use on all fabrics. It is a great solution for delicate fabrics like silk and cashmere.

## Compact design



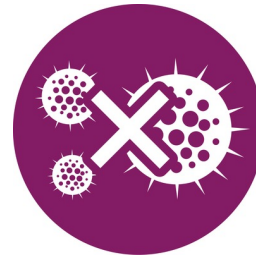
Compact design for easy storage.

## Adjustable pole



Integrated adjustable pole for hanging your garments. It is collapsible for easy storage.

## Bacteria killing



Hot steam refreshes your clothes and kills more than 99% of bacteria and dust mites\*. Less frequent washing and dry cleaning saves time and money, and helps clothes last longer.

## Easy Rinse descaling



Prolong the lifetime of your appliance by using the Easy Rinse descaling function regularly.

# Specifications

## Fast crease removal

Continuous steam: 35 g/min

Power: 1800 W

Ready to use: 2 min

Vertical steam

Voltage: 220-240 V

Variable steam levels: 2

## Easy to use

Safe on all ironable fabrics: Even delicates like silk

Water tank capacity: 1400 ml

Detachable water tank

Power cord length: 1.8 m

Refill any time during use

## Accessories included

Garment hanger

Glove for extra protection

Adjustable double pole

## Size and weight

Packaging dimensions (WxHxL): 34.5 x 40 x 40 cm cm

Product dimensions (WxHxL): 27.7 x 31.5 x

30.9 cm cm

Total weight with packaging: 4.6 kg

Weight of iron: 0.33 kg

Weight of iron + base: 3.4 kg

Pole dimensions extended: 155 cm

## Guarantee

2 year worldwide guarantee

## Green efficiency

User manual: 100% recycled paper

