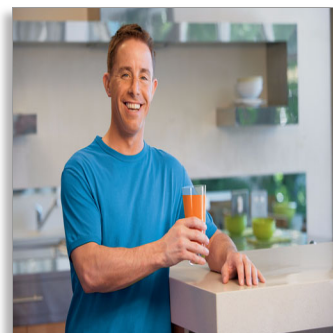




Philips Pure Essentials  
Collection  
Juicer

**650 W**

2 L XL tube



**HR1858/00**

## Perfect juice instantly

Swallows whole fruit and squeezes every drop

Juicing has never been easier. With its large feeding tube that swallows whole fruit and vegetable so there is no need to pre-cut. The powerful 650 W motor together with the unique micro-mesh filter will squeeze juice to the very last drop.

### **Makes more juice**

- Micro mesh filter made of stainless steel
- Continuous juicing thanks to extra large capacity

### **No pre-cutting needed**

- No pre-cutting thanks to extra large feeding tube

### **Fast juicing**

- Multiple speed control for soft and hard fruits
- Powerful motor

### **Quick and easy cleaning**

- All parts are dishwasher safe

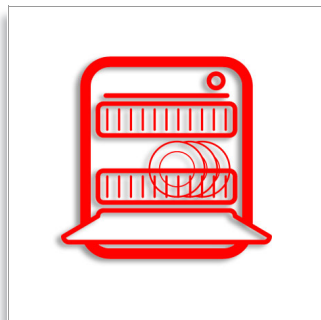
### **Delicious and easy to make recipes**

- Recipe booklet offering various juice recipes

**PHILIPS**  
sense and simplicity

## Highlights

### Dishwasher-safe



All removable parts can be cleaned in the dishwasher.

### Extra large capacity



2 l pulp container and 1,25 l juice jug allow you to juice more juice in one go.

### Extra large feeding tube

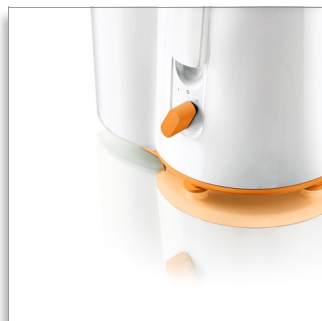


The extra large feeding tube swallows whole fruit and vegetables so you don't need to cut or chop them anymore.

### Micro mesh filter

Micro mesh filter made of stainless steel

### Multiple speed control



With the multiple speed settings of your Philips juicer you can easily juice soft or hard fruits and vegetables.

### Recipe booklet included

This recipe booklet contains delicious and easy to make juice recipes to make with your Philips juicer.

## Specifications

### Accessories

- Juice jug

### General specifications

- Integrated cord storage
- Non-slip feet
- Safety clamps
- Speed setting: 2
- Recipe booklet

### Design specifications

- Color(s): Bright white with yellow accents
- Material housing and clamps: ABS
- Material lid: SAN
- Material pulp container and pusher: PP
- Material spout: Stainless steel
- Material jug: SAN jug and PP cover

### Technical specifications

- Power: 650 W
- Voltage: 220-240 V
- Cord length: 1.2 m
- Feeding tube dia: 75 mm
- Frequency: 50/60 Hz
- Pulp container: 2 l
- Capacity juice jug: 1250 ml

