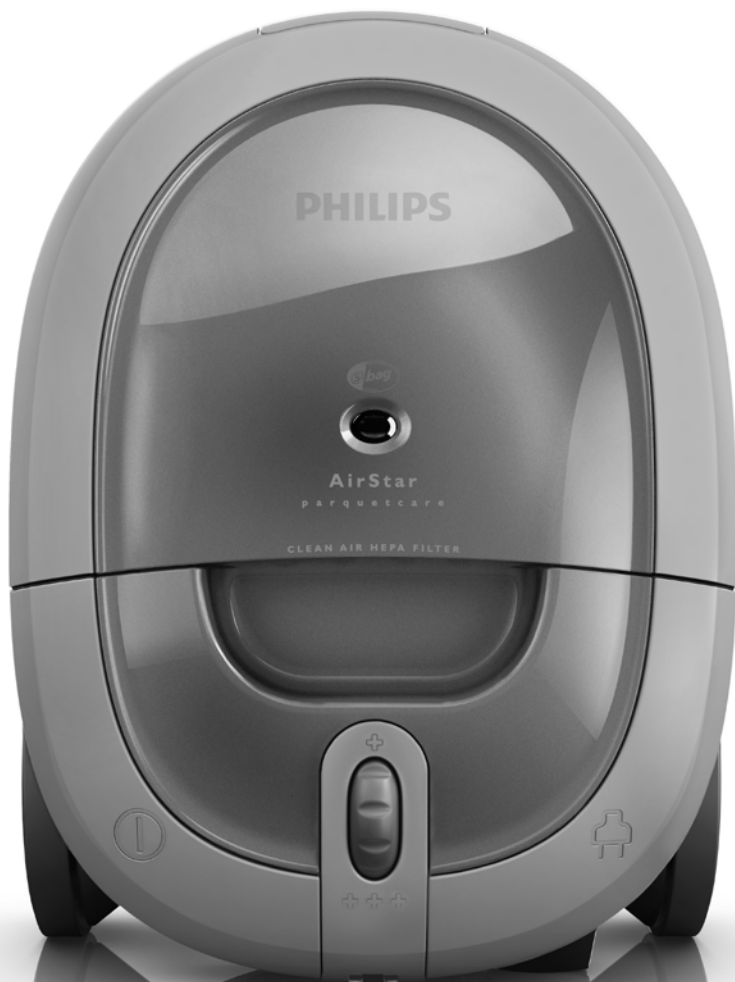


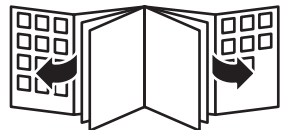
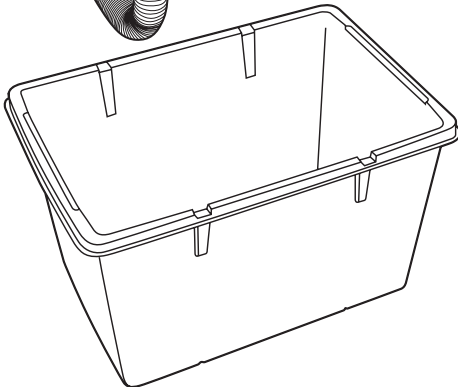
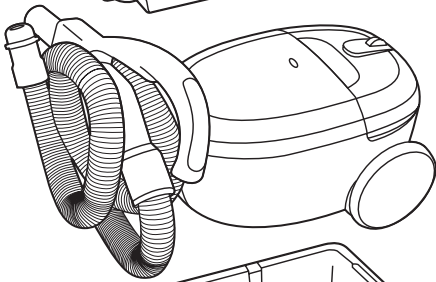
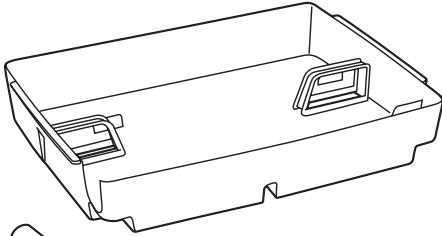
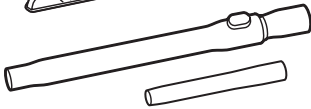
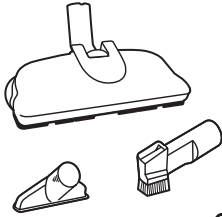
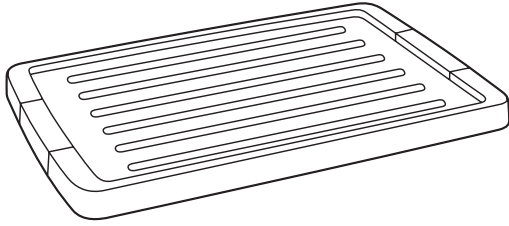
Register your product and get support at

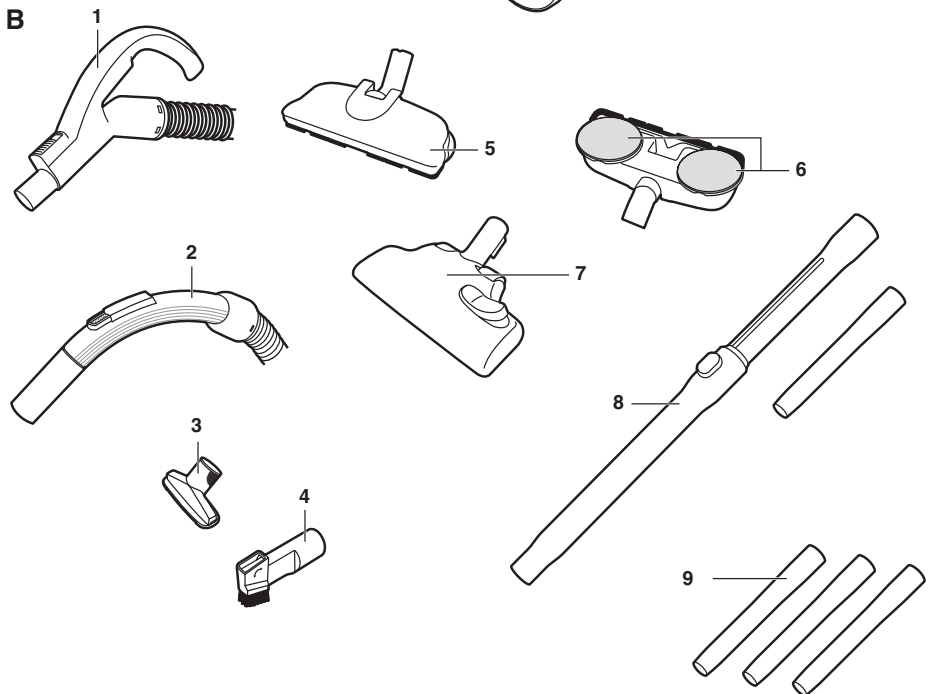
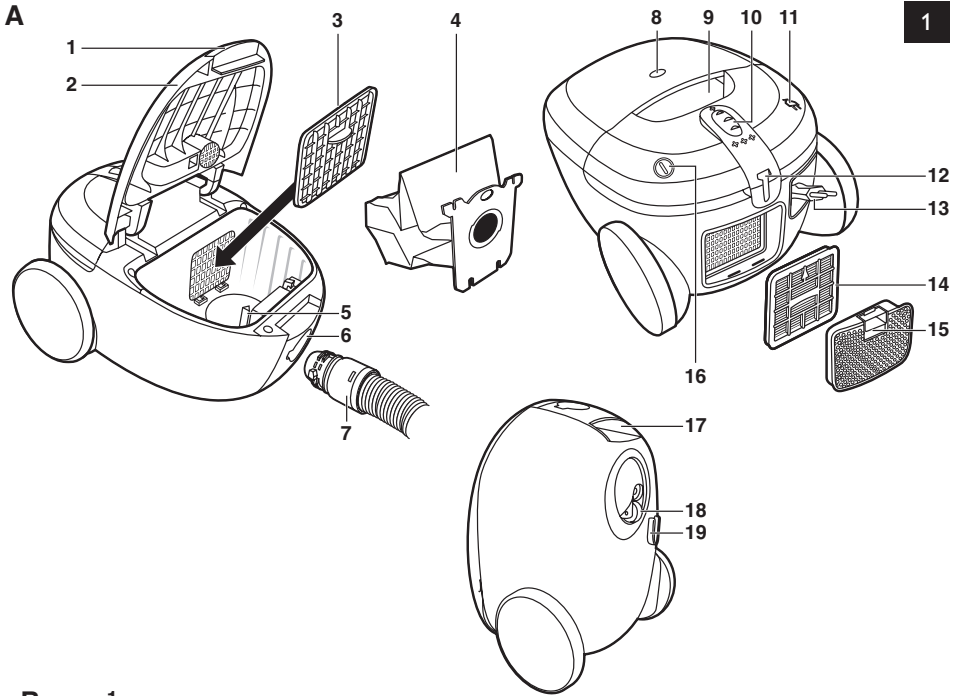
[www.philips.com/welcome](http://www.philips.com/welcome)

FC8226, FC8224, FC8222, FC8220



**PHILIPS**







**ENGLISH 6**  
简体中文 13

**FC8226, FC8224, FC8222, FC8220**

## Introduction

Congratulations on your purchase and welcome to Philips! To fully benefit from the support that Philips offers, register your product at [www.philips.com/welcome](http://www.philips.com/welcome).

## General description (Fig. 1)

- A** Vacuum cleaner
- 1** Cover release tab
  - 2** Cover
  - 3** Motor protection filter holder
  - 4** Dustbag
  - 5** Dustbag holder
  - 6** Hose connection opening
  - 7** Hose connector
  - 8** Dustbag full indicator
  - 9** Top handle
  - 10** Electronic suction power control (specific types only)
  - 11** Cord rewind button
  - 12** Parking slot
  - 13** Mains plug
  - 14** Clean Air HEPA outlet filter
  - 15** Filter grille
  - 16** On/off button
  - 17** Front handle
  - 18** Swivel wheel
  - 19** Storage slot
- B** Accessories
- 1** Hose with comfort handgrip and suction power slide (specific types only)
  - 2** Hose with handgrip and suction power slide (specific types only)
  - 3** Small nozzle
  - 4** Crevice/brush nozzle
  - 5** Super Parquet nozzle (specific types only)
  - 6** Polishing pads
  - 7** Combination nozzle with rocker switch
  - 8** Telescopic tube with extension tube (specific types only)
  - 9** 3-piece plastic tube (specific types only)

## Important

Read this user manual carefully before you use the appliance and save it for future reference.

### Danger

- Never suck up water or any other liquid. Never suck up flammable substances and do not suck up ashes until they are cold.

### Warning

- Check if the voltage indicated on the appliance corresponds to the local mains voltage before you connect the appliance.
- Do not use the appliance if the plug, the mains cord or the appliance itself is damaged.
- If the mains cord is damaged, you must have it replaced by Philips, a service centre authorised by Philips or similarly qualified persons in order to avoid a hazard.
- This appliance is not intended for use by persons (including children) with reduced physical, sensory or mental capabilities, or lack of experience and knowledge, unless they have been given

supervision or instruction concerning use of the appliance by a person responsible for their safety.

- Children should be supervised to ensure that they do not play with the appliance.
- Do not point the hose, the tube or any other accessory at the eyes or ears nor put it in your mouth when it is connected to the vacuum cleaner and the vacuum cleaner is switched on.

### Caution

- Do not suck up large objects as this may cause the air passage in the tube or hose to become obstructed.
- When you use the appliance to vacuum ashes, fine sand, lime, cement dust and similar substances, the pores of the dustbag become clogged. As a result, the dustbag-full indicator will indicate that the dustbag is full. Replace the dustbag, even if it is not full yet (see chapter 'Replacement').
- Never use the appliance without a dustbag or the motor protection filter. This damages the motor and shortens the life of the appliance.
- Only use Philips s-bag® synthetic dustbags.
- During vacuum cleaning, especially in rooms with low air humidity, your vacuum cleaner builds up static electricity. As a result you can experience electric shocks when you touch the tube or other steel parts of your vacuum cleaner. These shocks are not harmful to you and do not damage the appliance. To reduce this inconvenience we advise you:
  - 1 to discharge the appliance by frequently holding the tube against other metal objects in the room (for example the legs of a table or chair; a radiator etc.) (Fig. 2)
  - 2 to raise the air humidity level in the room by placing water in the room. For example, you can hang containers filled with water from your radiators or place bowls filled with water on or near your radiators (Fig. 3).

### Electromagnetic fields (EMF)

This Philips appliance complies with all standards regarding electromagnetic fields (EMF). If handled properly and according to the instructions in this user manual, the appliance is safe to use based on scientific evidence available today.

#### Before first use

Remove the stickers from the plastic storage container (specific types only).

#### Preparing for use

##### Hose

- 1 To connect the hose, push it into the appliance (1) and turn it clockwise (2) (Fig. 4).

*Note: To disconnect the hose, turn it anticlockwise and pull it out of the appliance.*

##### Tube

#### 3-piece plastic tube (specific types only)

- 1 To connect the tube parts to each other, insert the narrow section into the wider section and turn a little (Fig. 5).

*Note: To disconnect the tube parts from each other, pull and turn a little.*

- 2 To connect the tube to the handgrip of the hose, insert the narrow section into the wider section and turn a little (Fig. 6).

*Note: To disconnect the tube from the handgrip, pull and turn a little.*

### Telescopic tube with extension tube (specific types only)

- 1 To connect the extension tube to the bottom part of the telescopic tube, insert the narrow section into wider section and turn a little.

*Note: To disconnect the tube parts from each other, pull and turn a little.*

- 2 To connect the tube to the handgrip of the hose, insert the narrow section into the wider section and turn a little (Fig. 6).

*Note: To disconnect the tube from the handgrip, pull and turn a little.*

- 3 To adjust the length of the tube to the length you find most comfortable during vacuuming, press the button on the tube (1) and pull the upper tube part upwards or push it downwards (2). (Fig. 7)

---

## Nozzles

### Connecting nozzles to the tube

- 1 To connect a nozzle to the tube, insert the tube into the nozzle and turn a little (Fig. 8).

*Note: To disconnect a nozzle from the tube, pull and turn a little.*

### Combination nozzle with 1 rocker switch

You can use the combination nozzle on carpet (with the brush strips folded in) or on hard floors (with the brush strips folded out).

- To clean hard floors, push the rocker switch on top of the combination nozzle with your foot to make the brush strips come out of the nozzle housing (Fig. 9).
- To clean carpet, push the rocker switch to make the brush strips disappear into the housing (Fig. 10).

### Super Parquet nozzle (specific types only)

You can use the parquet nozzle to clean parquet and other types of hard floors. The parquet nozzle is equipped with rotating microfibre pads that gently clean and polish the floor and remove stubborn dirt. The nozzle loosens dirt and traps it inside the fibres of the pads. The pads in combination with the high suction power of this vacuum cleaner cause this nozzle to clean 3 times better than ordinary nozzles.

Never use water to clean wooden floors or parquet.

### Small nozzle and crevice/brush nozzle

- 1 Connect the small nozzle or crevice/brush nozzle directly to the handgrip or to the tube (Fig. 11).

- 1 Small nozzle: use this nozzle to clean small areas, e.g. the seats of chairs and sofas.
- 2 Crevice/brush nozzle: use the crevice side of this nozzle to clean narrow corners or hard-to-reach places and use the brush side to clean computers, bookshelves etc.

## Using the appliance

### Vacuum cleaning

---

- You can carry the vacuum cleaner by the handle at the front or on top of the appliance (Fig. 12).

- 1 Pull the mains cord out of the appliance and put the mains plug in the wall socket.

- 2 Press the on/off button on top of the appliance with your foot to switch on the appliance (Fig. 13).

- If you want to pause for a moment, insert the ridge on the combination nozzle into the parking slot to park the tube in a convenient position. (Fig. 14)



*Note: To ensure stable parking of the telescopic tube, adjust the tube to the shortest length.*

- 3 To switch off the appliance, press the on/off button again.

### Adjusting suction power

---

You can adjust the suction power with:

- the suction power slide on the handgrip (Fig. 15).
- the electronic suction power control on the vacuum cleaner (specific types only) (Fig. 16).

## Cleaning

Always switch off and unplug the appliance before you remove and clean any parts.

Do not clean any part of the vacuum cleaner in the dishwasher. If necessary, clean the parts with a damp cloth.

- 1 Clean the appliance with a damp cloth.

### Cleaning the permanent motor protection filter

---

Clean the permanent motor protection filter every time you replace the dustbag.

- 1 Pull at the cover release tab (1) and open the cover (2) (Fig. 17).
- 2 Pull the clamps aside (1) and pull the dustbag forward (2) (Fig. 18).
- 3 Lift the dustbag out of the appliance. (Fig. 19)

Make sure you hold the dustbag upright when you lift it out of the appliance.

- 4 Pull the motor protection filter holder forwards to release it (Fig. 20).
- 5 Remove the motor protection filter from filter holder.
- 6 Shake the motor protection filter over a dustbin to clean it.
- 7 Put the clean filter back into the filter holder.
- 8 Fit the two lugs at the bottom of the filter holder into the brackets (1). Then press the filter holder home ('click') (2). (Fig. 21)
- 9 Place the bottom edge of the dustbag in front of the ridge on the bottom of the appliance (1). Pull the cardboard front of the dustbag towards you ('click') (2). (Fig. 22)

*Note: If no dustbag has been inserted, you cannot close the cover.*

- 10 Close the cover.

### Cleaning the Super Parquet nozzle (specific types only)

---

Replace the pads at least every three months.

New pads (type HR8041) are available from your local Philips dealer.

#### Regular cleaning

- 1 Remove the parquet nozzle from the appliance and vacuum clean the pads while they are still attached to the nozzle. Select the lowest suction power setting.

#### Thorough cleaning

- 1 Pull the pads off the discs (the pads are fastened to the discs by means of Velcro).
- 2 Clean the pads in warm water with some soap or in the washing machine.

Wash the pads separately according to the instructions on the laundry care label.

Never use chloride or fabric softener to clean the pads.

**3** Let the pads dry properly before you use them again.

**4** Reattach the red sides of the clean pads to the discs.

*Note: The light blue sides of the pads have to be in contact with the floor, not the red sides.*

## Replacement

### Dustbag

*Tip: We advise you to clean the motor protection filter every time you replace the dustbag (see chapter 'Cleaning').*

Always unplug the appliance before you replace the dustbag.

#### Before replacing the dustbag

In some cases, the dustbag-full indicator can indicate that the dustbag is full, even though it is not. This may occur if the pores of the dustbag are clogged (e.g. when you have vacuumed ashes, fine sand, lime, cement dust and similar substances) or if something is blocking the nozzle, tube and/or hose. If the pores of the dustbag are clogged, you have to replace the dustbag, even if it is not full yet. If the dustbag is not clogged but not full either, something is blocking the nozzle, tube and/or hose. In this case, do not replace the dustbag but remove the obstruction.

#### Replacing the dustbag

- Replace the dustbag as soon as the dustbag-full indicator has changed colour permanently, i.e. even when the nozzle is not placed on the floor (Fig. 23).

**1** Pull at the cover release tab (1) and open the cover (2) (Fig. 17).

**2** Pull the clamps aside (1) and pull the dustbag forward (2) (Fig. 18).

**3** Pull the cardboard tag upwards to lift the dustbag out of the appliance. (Fig. 19)

► The dustbag is sealed automatically.

**4** Place the bottom edge of the new dustbag in front of the ridge on the bottom of the appliance (1). Pull the cardboard front of the dustbag towards you ('click') (2) (Fig. 22).

*Note: If no dustbag has been inserted, you cannot close the cover.*

**5** Close the cover.

#### Clean Air HEPA outlet filter

Your vacuum cleaner is equipped with a Clean Air HEPA outlet filter (service code 4222 459 48841).

Replace the Clean Air HEPA outlet filter every 12 months.

**1** Switch off and unplug the appliance.

**2** Pull at the grip on the filter grille (1) and remove it from the appliance (2) (Fig. 24).

**3** Remove the Clean Air HEPA outlet filter from the appliance (Fig. 25).

**4** Insert a new Clean Air HEPA outlet filter into the appliance (Fig. 26).

**5** Reattach the filter grille to the appliance ('click') (Fig. 27).

#### Storage (Fig. 28)

**1** Switch off the appliance and remove the mains plug from the wall socket.

**2** Press the cord rewind button to rewind the mains cord.

**3 You can store the appliance in the following ways:**

- Put the appliance in upright position. To attach the nozzle to the appliance, insert the ridge on the nozzle into the storage slot. (Fig. 29)

**Note:** To ensure stable parking of the telescopic tube, adjust the tube to the shortest length.

- Store the appliance and its accessories in the box or plastic storage container (specific types only). To find out how to do this, look at the storage figure at the beginning of this user manual.

## Accessories

If you have any difficulties obtaining filters or other accessories for this appliance, please contact the Philips Consumer Care Centre in your country or consult the worldwide guarantee leaflet.

### Dustbags

- Philips Classic s-bag® synthetic dustbags are available under type number FC8021.
- Philips Clinic s-bag® high filtration synthetic dustbags are available under type number FC8022.
- Philips Anti-odour s-bag® synthetic dustbags are available under type number FC8023.

**Note:** Please visit [www.s-bag.com](http://www.s-bag.com) for more information about the s-bag®.

### Clean Air HEPA outlet filter

- Clean Air HEPA outlet filters are available under service code 4222 459 48841.

### Super Parquet nozzle pads (specific types only)

- Super Parquet nozzle pads are available under type number HR8041.

## Environment

- Do not throw away the appliance with the normal household waste at the end of its life, but hand it in at an official collection point for recycling. By doing this, you help to preserve the environment (Fig. 30).

## Guarantee and service

If you need service or information or if you have a problem, please visit the Philips website at [www.philips.com](http://www.philips.com) or contact the Philips Consumer Care Centre in your country (you find its phone number in the worldwide guarantee leaflet). If there is no Consumer Care Centre in your country, go to your local Philips dealer.

The storage box is not covered by the terms of the international guarantee.

## Troubleshooting

This chapter summarises the most common problems you could encounter with the appliance. If you are unable to solve the problem with the information below, contact the Consumer Care Centre in your country.

Problem	Possible cause	Solution
The suction power is insufficient.	The dustbag is full.	Replace the dustbag (see chapter 'Replacement').
	The motor protection filter is dirty.	Clean the motor protection filter (see chapter 'Cleaning').
	The Clean Air HEPA outlet filter is dirty.	Replace the Clean Air HEPA outlet filter (see chapter 'Replacement').

Problem	Possible cause	Solution
	<p>The electronic suction power control is set to a low setting.</p> <p>Specific types only: the suction power slide on the handgrip is open.</p>	<p>Set the electronic suction power control to a higher setting.</p> <p>Close the suction power slide.</p>
	<p>The nozzle, tube or hose is blocked.</p>	<p>Disconnect the blocked-up item and connect it (as far as possible) the other way around. Switch on the vacuum cleaner to force the air through the blocked-up item in opposite direction.</p>

## 产品简介

感谢您的惠顾，欢迎光临飞利浦！为了您能充分享受飞利浦提供的支持服务，请登陆 [www.philips.com/welcome](http://www.philips.com/welcome) 网站注册您的产品。

### 一般说明 (图 1)

- A** 真空吸尘器
- 1 集尘桶盖打开钮
  - 2 上盖
  - 3 马达保护滤网固定架
  - 4 集尘袋
  - 5 集尘袋固定架
  - 6 软管连接孔
  - 7 软管接口
  - 8 尘量显示器
  - 9 顶部把手
  - 10 通过电子吸力控制旋钮即可调整吸力（仅限于特定型号）
  - 11 电源线自动回卷按钮
  - 12 摆放固定槽
  - 13 电源插头
  - 14 超洁空气 HEPA 排气过滤网
  - 15 滤网栅格
  - 16 开/关钮
  - 17 前握把
  - 18 滚轮
  - 19 插槽
- B** 附件
- 1 带舒适握把和吸力控制滑块的软管（仅限于特定型号）
  - 2 带握把和吸力控制滑块的软管（仅限于特定型号）
  - 3 小号吸嘴
  - 4 缝隙/毛刷吸嘴
  - 5 洁旋风吸嘴（仅限于特定型号）
  - 6 纤维软垫
  - 7 带转换开关的组合吸嘴
  - 8 带加长管的伸缩管（仅限于特定型号）
  - 9 3 节塑料管（仅限于特定型号）

### 注意事项

使用产品之前，请仔细阅读本使用说明书，并妥善保管以备日后参考。

#### 危险

- 切勿吸入水或其它液体。切勿吸入易燃物质，也不要吸入未冷却的灰烬。

#### 警告

- 在将产品连接电源之前，请先检查产品所标电压与当地的供电电压是否相符。
- 如果插头、电源线或产品本身受损，请勿使用本产品。

- 如果电源软线损坏，为了避免危险，必须由制造商、其维修部或类似部门的专业人员来更换。
- 本产品不打算由肢体不健全、感觉或精神上有障碍或缺乏相关经验和知识的人（包括儿童）使用，除非有负责他们安全的人对他们使用本产品进行监督或指导。
- 应照看好儿童，确保他们不玩耍该产品。
- 当连接到真空吸尘器并且真空吸尘器已开始工作时，请勿将软管、硬管或任何其它附件指向眼睛或耳朵，也不要放在口中。

### 注意

- 切勿吸取体积较大的脏物，否则可能阻塞硬管或软管中的空气通道。
- 在使用本产品吸收灰尘、细沙、石灰、水泥灰和类似的物质时，集尘袋的袋孔可能发生阻塞。因此，集尘袋已满指示灯将显示集尘袋已满。这时，请更换集尘袋，即使集尘袋并未装满（见“更换”一章）。
- 切勿在不带集尘袋或未安装马达保护滤网的情况下使用本产品。这将使马达受损，并缩短产品的使用寿命。
- 仅限于使用飞利浦 s-bag(R) 高效能吸尘纸袋。
- 进行真空吸尘时，尤其是在空气湿度较低的房间中吸尘时，吸尘器会积聚静电。因而当您触摸硬管或吸尘器的其它部件时，可能会感受到轻微电击。这种电击对人体无害，也不会损坏产品。但为了尽量减少这种不便，建议您：
  - 1 经常握住硬管使其与房间中的其它金属物体接触（例如，桌椅脚或电炉等）；（图 2）
  - 2 在房间中放水，增加空气湿度。例如，可将装有水的容器挂在电炉上，或将装有水的碗放在电炉上或附近。（图 3）

### 电磁场 (EMF)

这款飞利浦产品符合关于电磁场 (EMF) 的相关标准。据目前的科学证明，如果正确使用并按照本用户手册中的说明进行操作，本产品是安全的。

### 初次使用之前

撕掉塑料存放箱上的不干胶标签（仅限于特定型号）。

### 使用准备

#### 软管

**1** 要将软管连接，将软管推入吸尘器 (1) 并以顺时针方向旋转即可 (2)。（图 4）

注意：要将软管从吸尘器上拆下，请将管端逆时针方向转动，并拉出软管。

## 硬管

### 3 节塑料管（仅限于特定型号）

**1** 要将硬管的两端相互连接，请将窄的部分插入宽的部分，同时稍加旋转。（图 5）

注意：要断开硬管两端，请向外拉并且稍微转一下。

**2** 要将硬管与软管的握把连接起来，应将窄的部分插入宽的部分并且稍微转一下。（图 6）

注意：要从握把取下硬管，请在拉动硬管的同时稍作旋转。

#### 带加长管的伸缩管（仅限于特定型号）

**1** 要将加长管与伸缩管的底部连接起来，请将窄的部分插入宽的部分并且稍微转一下。

注意：要断开硬管两端，请向外拉并且稍微转一下。

**2** 要将硬管与软管的握把连接起来，应将窄的部分插入宽的部分并且稍微转一下。（图 6）

注意：要从握把取下硬管，请在拉动硬管的同时稍作旋转。

**3** 要将硬管的长度调整为您在吸尘时感觉最为舒适的长度，请按下硬管上的按钮 (1)，然后向下拉或向上推硬管上半部分 (2)。（图 7）

## 吸嘴

### 将吸嘴连接到硬管

**1** 要将吸嘴连接到硬管，请将硬管插到吸嘴并稍微转一下。（图 8）

注意：要从硬管取下吸嘴，请向外拉并稍微转一下。

### 带 1 个转换开关的组合吸嘴

您可以在地毯（刷条内翻）或硬地板（刷条外翻）上使用组合吸嘴。

- 要清洁硬地板，请用脚推动组合吸嘴上的刷毛转换块，让刷条从吸嘴外壳中伸出来。（图 9）
- 要清洁地毯，请按动转换块，使刷条缩入吸嘴中。（图 10）

### 洁旋风吸嘴（仅限于特定型号）

您可以使用洁旋风吸嘴清洁地板及其他类型的硬地板。洁旋风吸嘴配备旋转微细纤维软垫，能一边轻柔地清洁和磨光地板，一边清除顽固污渍。吸管能使污渍松动并吸附到软垫的纤维内。软垫与吸尘器强大吸力的结合，令此吸嘴产生比普通吸嘴强 3 倍的清洁效能。

切勿用水清洁木地板或镶木地板。

### 小号吸嘴和缝隙/毛刷吸嘴

**1** 将小号吸嘴或缝隙/毛刷吸嘴直接连接到握把或吸管上。（图 11）

- 1 小号吸嘴：使用小号吸嘴清洁较小的区域，例如椅子和沙发的座位。
- 2 缝隙/毛刷吸嘴：使用此吸嘴的缝隙一侧清洁狭窄的角落或难以触及的地方；使用毛刷一侧清洁电脑、书架等等。

## 使用本产品

### 使用吸尘器

- 您可以手握前方或顶部的把手提起吸尘器。（图 12）

**1** 将电源线从吸尘器中拉出，并将电源插头插入插座。

**2** 用脚按下产品上的开/关按钮，打开电源。（图 13）

## 16 简体中文

- 如要暂停使用吸尘器，可通过将组合吸嘴上的夹片插入摆放固定槽以将硬管放妥。（图 14）

注意：要确保稳固摆放伸缩管，请将伸缩管调至最短。

- 3 再次按下开关，可将产品断电。

### 调节吸力大小

您可以使用下列部件调节吸力：

- 握把上的吸力滑块。（图 15）
- 吸尘器上的电子吸力控制旋钮（仅限于特定型号）。（图 16）

## 清洁

在取出和清洁任何部件之前，应始终关闭产品并断开电源。

请勿将吸尘器的任何部件放入洗碗机中清洗。如有必要，可用湿布清洁部件。

- 1 用湿布擦拭本产品。

### 清洁永久性马达保护滤网

每次更换集尘袋时，都应清洁永久性马达保护滤网。

- 1 拉起集尘桶盖打开钮 (1)，打开桶盖 (2)。（图 17）
- 2 将夹板拉到一旁 (1)，然后向前拉集尘袋 (2)。（图 18）
- 3 从产品中取出集尘袋。（图 19）

从吸尘器中取出集尘袋时，必须以垂直方向握住集尘袋。

- 4 向前拉马达保护滤网固定架，将其释放。（图 20）
- 5 从滤网固定架取出马达保护滤网。
- 6 在垃圾箱上方将马达保护滤网甩净。
- 7 将干净的滤网放回滤网固定架中。
- 8 将滤网固定架底部的两个连接片装到托架中 (1)。然后将滤网固定架按入到位（可听到“咔哒”一声）(2)。（图 21）
- 9 将集尘袋的底部边缘放在产品底部夹片的正前方 (1)。拉动您面前集尘袋的纸板片的正面（可听到“咔哒”一声）(2)。（图 22）

注意：如果没有装入集尘袋，则无法关闭集尘盖。

- 10 将机罩关闭。

### 清洁洁旋风吸嘴（仅限于特定型号）

至少每三个月更换一次软垫。

可以从本地飞利浦零售商购买软垫（型号 HR8041）进行更换。

#### 定期清洁

- 1 将洁旋风吸嘴从产品上取下，使软垫仍然留在吸嘴上，调节吸尘器至最低吸力，然后吸走软垫上的灰尘。

#### 彻底清洁

- 1 将软垫从圆盘上拉下（软垫是用维可牢尼龙搭扣固定在圆盘上的）。



**2** 用少许温和的肥皂水或在洗碗机中清洁软垫。  
根据洗熨注意标签上的指示清洗软垫。

**切勿用氯化物或纤维柔软剂清洁软垫。**

**3** 再次使用之前，请先待软垫完全干燥。

**4** 将清洁完毕的软垫的红色一侧固定到圆盘上。

注意：软垫的淡蓝色一侧是必须接触地板的，而不是红色一侧。

## 更换

### 集尘袋

提示：建议您每次更换集尘袋时清洁马达保护滤网（见“清洁”一章）。

**更换集尘袋前，切记拔下电器插头。**

#### 在更换集尘袋之前

某些情况下，即使集尘袋未满，集尘袋已满指示灯也可能显示集尘袋已满。如果集尘袋的气孔被阻塞（如在清洁灰尘、细沙、石灰、水泥灰及类似脏物时），或吸嘴、硬管或软管被异物阻塞时，可能出现这种情况。如果集尘袋的气孔被阻塞，即使集尘袋未满，您也必须更换集尘袋。如果集尘袋没有被阻塞，也没有装满，则是异物堵塞了吸嘴、硬管和/或软管。在这种情况下，不用更换集尘袋，但是要清除阻塞物。

#### 更换集尘袋

- 在集尘袋已满指示灯的颜色改变时（在吸嘴没有紧贴地板的情况下），请立即更换集尘袋。（图 23）

**1** 拉起集尘桶盖打开钮 (1)，打开桶盖 (2)。（图 17）

**2** 将夹板拉到一旁 (1)，然后向前拉集尘袋 (2)。（图 18）

**3** 向上拉纸板片以将集尘袋从产品中取出。（图 19）

▶ 集尘袋会自动封闭。

**4** 将新集尘袋的底部边缘放在产品底部夹片的正前方 (1)。拉动您面前集尘袋的纸板片的正面（听到咔哒声）(2)。（图 22）

注意：如果没有装入集尘袋，则无法关闭集尘盖。

**5** 将机罩关闭。

#### 超洁空气 HEPA 排气过滤网

本吸尘器配备超洁空气 HEPA 排气过滤网（服务代码 4222 459 48841）。每隔 12 个月更换一次超洁空气 HEPA 排气过滤网。

**1** 关闭产品电源并拔出电源插头。

**2** 拉动滤网栅格上的把手 (1) 并将其从产品上取下 (2)。（图 24）

**3** 从产品中卸下超洁空气 HEPA 排气过滤网。（图 25）

**4** 将新的超洁空气 HEPA 排气过滤网插入产品。（图 26）

**5** 将滤网栅格重新装回产品（可听到“咔哒”一声）。（图 27）

#### 存储 (图 28)

**1** 关闭吸尘器的电源，从插座中拔下电源插头。

**2** 按下电源线回卷按钮将电线回卷到吸尘器中。

**3** 您也可以通过以下方法存放产品：

- 竖立放置产品。要将吸嘴安装到产品上，请将吸嘴上的夹片插入存放槽中。（图 29）

**注意：**要确保稳固摆放伸缩管，请将伸缩管调至最短。

- 将产品及其附件放到包装盒或塑料存放箱（仅限于特定型号）。要了解如何存放，请参阅本用户手册开头部分的存放图。

## 附件

如果您购买本产品的滤网或其他附件有困难，请与您所在国家/地区的飞利浦客户服务中心联系，或参阅全球保修卡。

### 集尘袋

- 飞利浦 Classic s-bag® 高效能吸尘纸袋的供应型号为 FC8021。
- 飞利浦 Clinic s-bag® 高效能合成吸尘纸袋的供应型号为 FC8022。
- 飞利浦去味 s-bag® 吸尘纸袋的供应型号为 FC8023。

**注意：**有关 s-bag® 高效能合成吸尘纸袋的详细信息，请访问 [www.s-bag.com](http://www.s-bag.com)。

### 超洁空气 HEPA 排气过滤网

- 超洁空气 HEPA 排气滤网的服务代码为 4222 459 48841。

### 洁旋风吸嘴软垫（仅限于特定型号）

- 洁旋风吸嘴软垫的供应型号为 HR8041。

## 环境

- 弃置产品时，请不要将其与一般生活垃圾堆放在一起；应将其交给官方指定的回收中心。这样做有利于环保。（图 30）

## 保修和服务

如果您需要服务或信息，或者有任何疑问，请访问飞利浦网站：[www.philips.com](http://www.philips.com)。您也可与您所在地的飞利浦客户服务中心联系（可从全球保修卡中找到其电话号码）。如果您的所在地没有飞利浦顾客服务中心，则可以与当地的飞利浦经销商联系。储藏箱不包括在国际保修条款中。

## 故障种类和处理方法

本章归纳了使用本产品时最可能遇到的问题。如果您无法根据下面的信息解决问题，请与贵国（地区）的飞利浦客户服务中心联系。

问题	可能的原因	解决方法
吸力不足。	集尘袋已满。	更换集尘袋（见“更换”一章）。
	马达保护滤网变脏。	清洁马达保护滤网（见“清洁”一章）。
	超洁空气 HEPA 排气过滤网变脏。	更换超洁空气 HEPA 排气过滤网（见“更换”一章）。
	吸力调控钮被设置在较低的档位。	将吸力调控钮设置在更高的档位。
	仅限于特定型号：握把上的吸力滑块已打开。	关闭吸力控制滑块。

问题

可能的原因

解决方法

吸嘴、硬管或软管阻塞。

将被阻塞的部分拆下，并将它以相反方向连接（尽可能离的远一些）。打开吸尘器的电源，强迫气流从相反方向通过被阻塞的部分。

## PHILIPS

产品 : 飞利浦家用  
真空卧式吸尘器  
型号 : FG8224  
额定电压 : 220V~  
额定频率 : 50Hz  
额定输入功率: 1400 W  
生产日期 : 请见产品底部  
产地 : 中国



珠海经济特区飞利浦家庭电器有限公司  
中国珠海市三灶镇琴石工业区  
邮政编码: 519040  
全国顾客服务热线: 4008 800 008

本产品根据国标 GB4706.1-2005, GB4706.7-2004, GB4343.1-2009及GB17625.1-2003制造

## PHILIPS

产品 : 飞利浦家用  
真空卧式吸尘器  
型号 : FC8220  
额定电压 : 220V~  
额定频率 : 50Hz  
额定输入功率: 1200 W  
生产日期 : 请见产品底部  
产地 : 中国



珠海经济特区飞利浦家庭电器有限公司  
中国珠海市三灶镇琴石工业区  
邮政编码: 519040  
全国顾客服务热线: 4008 800 008

本产品根据国标 GB4706.1-2005, GB4706.7-2004, GB4343.1-2009及GB17625.1-2003制造

## PHILIPS

产品 : 飞利浦家用  
真空卧式吸尘器  
型号 : FG8226  
额定电压 : 220V~  
额定频率 : 50Hz  
额定输入功率: 1400 W  
生产日期 : 请见产品底部  
产地 : 中国



珠海经济特区飞利浦家庭电器有限公司  
中国珠海市三灶镇琴石工业区  
邮政编码: 519040  
全国顾客服务热线: 4008 800 008

本产品根据国标 GB4706.1-2005, GB4706.7-2004, GB4343.1-2009及GB17625.1-2003制造

## PHILIPS

产品 : 飞利浦家用  
真空卧式吸尘器  
型号 : FC8222  
额定电压 : 220V~  
额定频率 : 50Hz  
额定输入功率: 1200 W  
生产日期 : 请见产品底部  
产地 : 中国



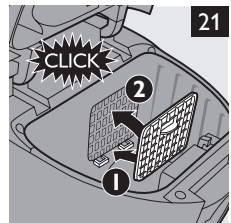
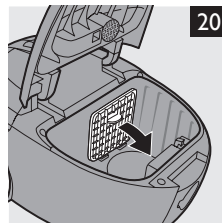
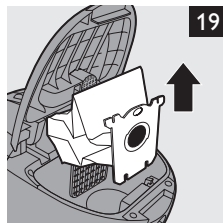
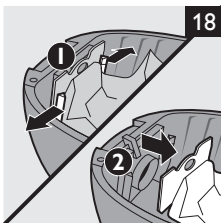
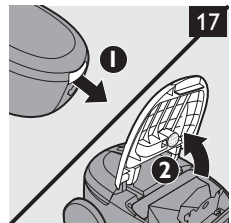
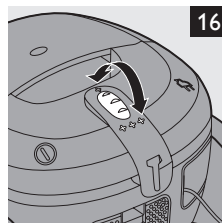
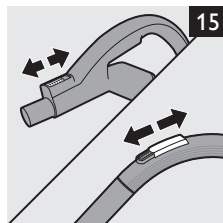
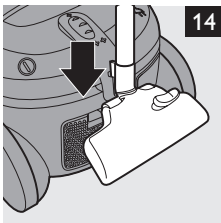
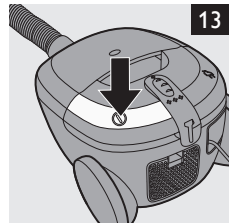
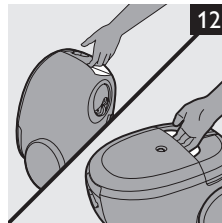
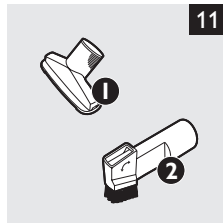
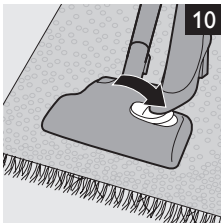
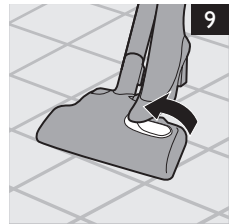
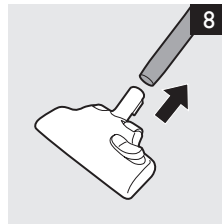
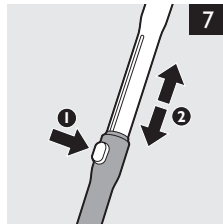
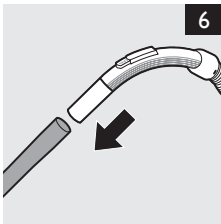
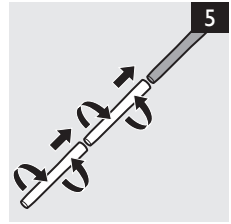
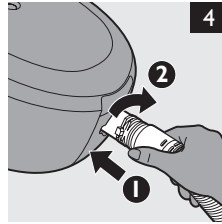
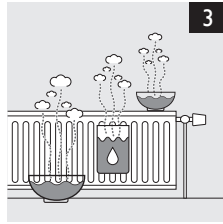
珠海经济特区飞利浦家庭电器有限公司  
中国珠海市三灶镇琴石工业区  
邮政编码: 519040  
全国顾客服务热线: 4008 800 008

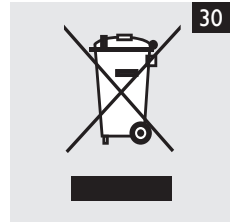
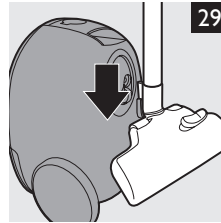
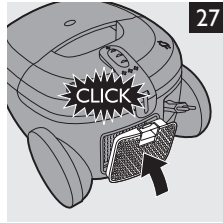
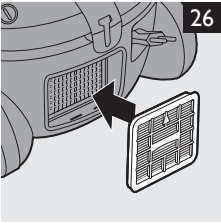
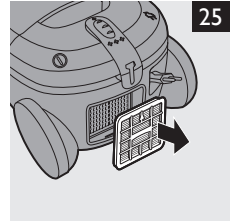
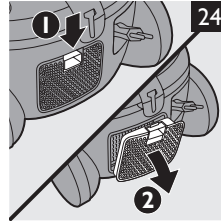
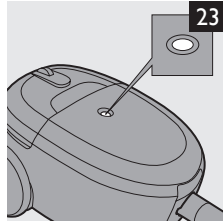
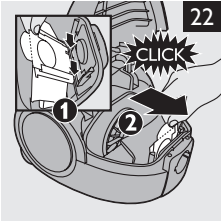
本产品根据国标 GB4706.1-2005, GB4706.7-2004, GB4343.1-2009及GB17625.1-2003制造

请妥善保管本使用说明书  
发行日期: 2010/07/07












[www.philips.com](http://www.philips.com)

 100% recycled paper  
100% papier recyclé  
100% 循环再造纸  
4222.003.3541.1