

Hong Kong  
Malaysia Singapore



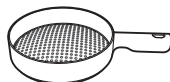
Thailand



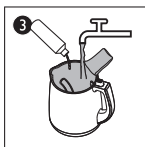
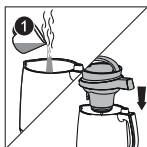
Indonesia Vietnam



Taiwan



## Cleaning and assembling



Cleaning before first use. Pour boiling water into the pot, and put the top unit into it. Then, soak for 10 minutes. Follow the Cleaning section in the user manual.

- Follow the operation steps in the user manual.
- Do not re-process or reheat cold soymilk with this soymilk maker. This is to avoid residues stick to the inner side of the pot.



## Making soymilk



### Caution

- Do not change the protruding direction of the filter. This special design optimizes the filtering effect.



## Warnings

