

To use the appliance, put the plug in the wall socket and press down the toasting lever. Please note that the toasting lever will only stay down if the appliance is connected to the mains!

Important

- Read these directions for use carefully before using the appliance and save them for future reference.
- Check if the voltage indicated on the bottom of the appliance corresponds to the mains voltage in your home before you connect the appliance.
- Connect the appliance to an earthed wall socket.
- Avoid touching the metal parts as the toaster gets hot during use.
- If a slice of bread gets stuck inside the toaster, please remove the mains plug from the wall socket first and then carefully remove the slice from the toaster. (Take care not to damage the heating elements while removing the slice of bread. Never use a metal object for this purpose).
- Bread may burn. Therefore, toasters must not be used under or near curtains or other combustible materials. Never leave the appliance unattended when it is switched on.
- Do not place any objects or rolls to be heated up directly on top of the toaster as this could cause damage to the appliance.
- We advise you not to use the toaster in the presence of birds.
- When cleaning the toaster, first remove the mains plug from the wall socket and let the appliance cool down. Never immerse the toaster in water. Wipe it clean with a damp cloth.
- If the mains cord of this appliance is damaged, it must always be replaced by Philips or a service centre authorised by Philips, as special tools and/or parts are required.
- The toaster is intended for household use only.
- The toaster is only intended for toasting bread. Using the toaster for other purposes such as drying clothes may cause damage to the appliance.
- Do not place the dust cover on top of the toaster when the appliance is switched on or when it is still hot as this could cause damage.

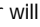
Using the appliance for the first time:

When you use the toaster for the first time, we strongly recommend that you let the toaster complete several toasting cycles without slices of bread in it at the highest toasting setting in a ventilated room to prevent the appliance from giving off unpleasant odours. Allow the toaster to cool down in between the toasting cycles. We advise you not to use the appliance in the presence of birds.

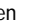
Operation (see illustrations):

- (Type HD2530): Insert one or two slices of bread (fig 1a).
- (Type HD2531): Insert one or two slices of bread (fig 1b).
- For optimal browning results, always put the slices of bread in the centre of the slots as much as possible.
- Before switching the appliance on, select the desired browning degree (fig 2a).
 - Select setting 1 or 2 for light browning or for toasting only one slice or dry bread.
 - Select setting 3, 4 or 5 for medium browning.
 - Select setting 6 for darker browning.
- (Type HD2530): Select setting 7 for toasting frozen bread. (When you are toasting a series of slices, you do not have to re-adjust the setting).
- To lower the slices into the toaster, press down the toasting lever. The integrated pilot light in the **STOP** button comes on (fig 3).
- When ready, the toast pops up and the heating elements are switched off automatically (fig 4). The pilot light in the **STOP** button goes off.
- If necessary, you can lift the toasting lever a little further to remove smaller slices of bread (fig 5).
- You can interrupt the toasting process by pressing the **STOP** button. The toasting lever is released automatically (fig 6).

Reheating bread (type HD2531 only)

You can reheat cooled-off toast by pressing the  button (fig 7). The toaster will switch off after approximately 30 seconds.

Defrosting bread (type HD2531 only)

You can toast frozen bread by pressing the  button (fig 8). This will lengthen the toasting time by approx. 30 seconds. You can adjust the browning degree by means of the browning selector.

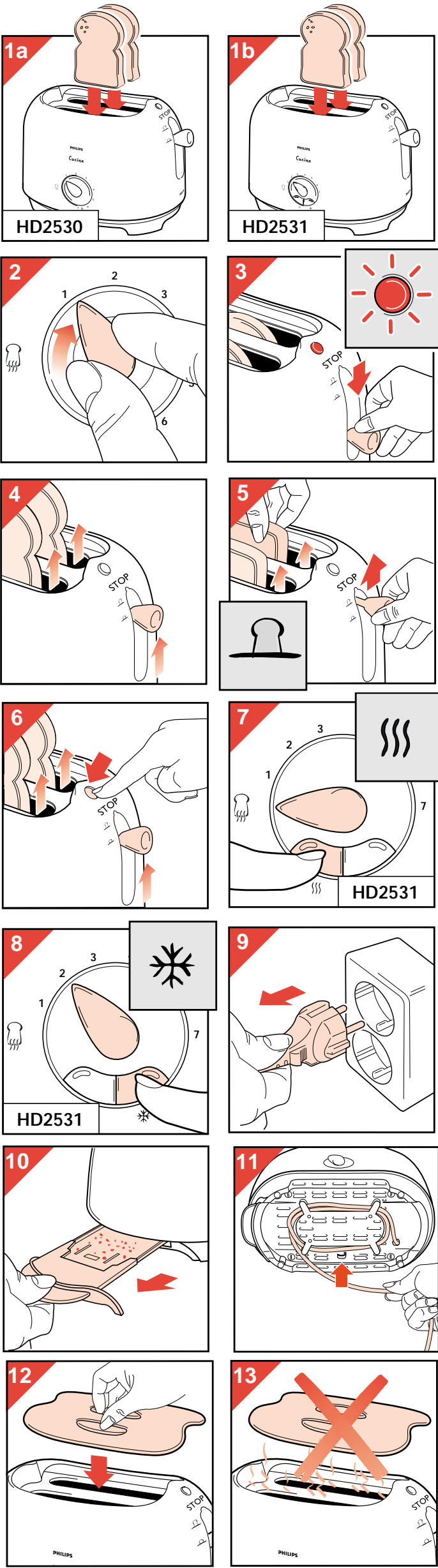
Cleaning and storage

Removing crumbs from the toaster:

- First remove the mains plug from the wall socket (fig 9).
- Pull out the crumb tray (fig 10). Do not remove crumbs by holding the appliance upside down and shaking it.
- After use, you can store the mains cord by winding it up (fig 11).

Placing the dust cover (after use)

After use, you can place the dust cover on top of the toaster (fig 12). Do not place the dust cover on top of the toaster when the appliance is switched on or when it is still hot as this could cause damage (fig 13).



PHILIPS

HD 2531/30



PHILIPS

100% recycled paper
100% papier recyclé

www.philips.com

4222 001 93212