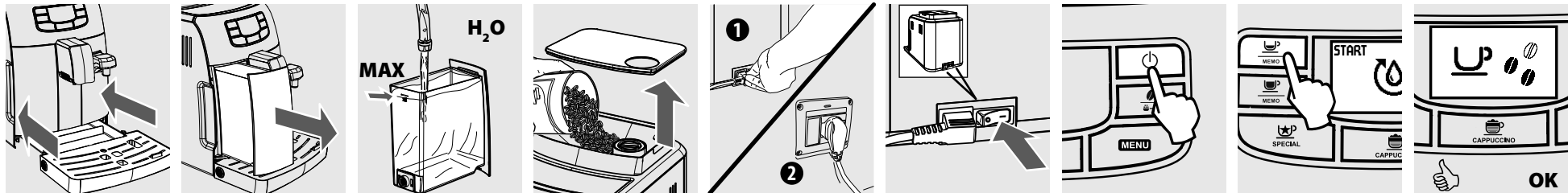


Quick Start Guide Intelial One Touch Cappuccino - HD8753

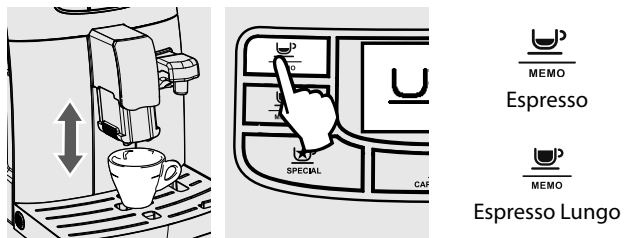
Register your product to receive tips and tricks and descaling reminder at www.philips.com/welcome



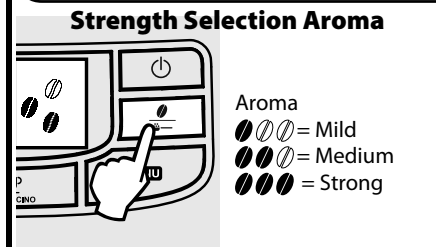
FIRST INSTALLATION



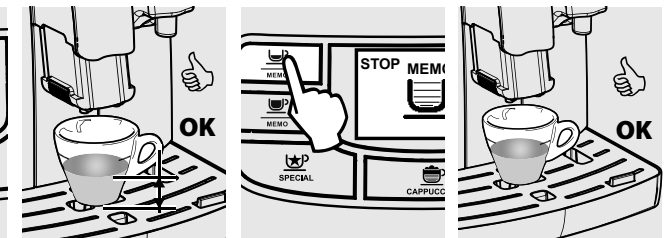
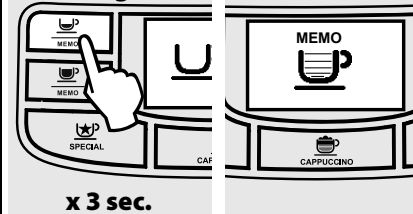
FIRST ESPRESSO



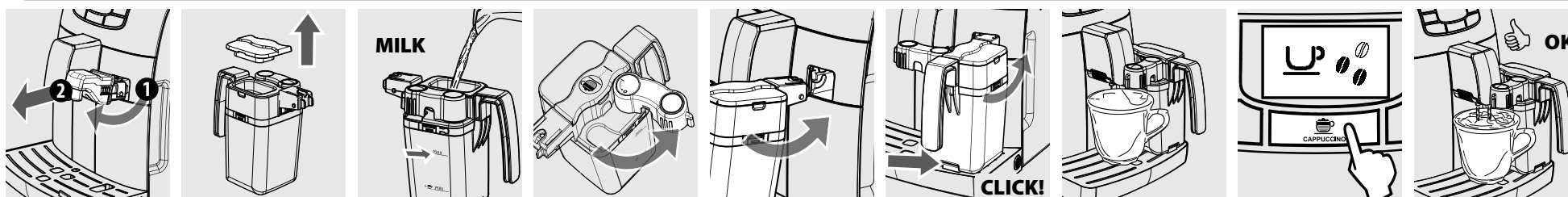
"MY" ESPRESSO



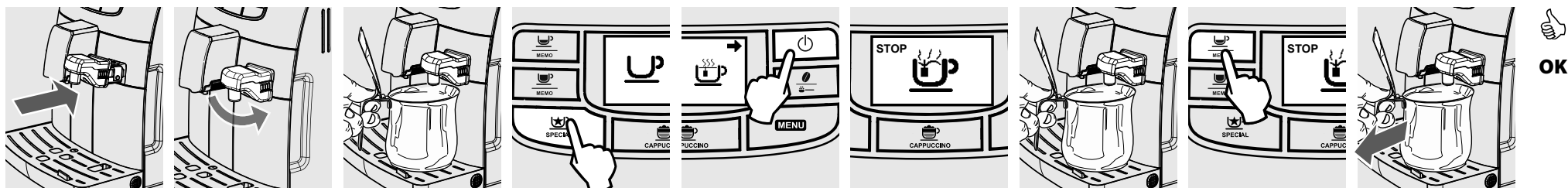
Length Selection: MEMO



FIRST CAPPUCCINO



HOT WATER



Please refer to user manual for more informations or go to www.philips.com/support

Quick Start Guide Intelial One Touch Cappuccino - HD8753



DESCALING - 30 min.

Keep the machine at its best

The advanced electronics tells you on the display of the machine (in clear symbols) when descaling is needed.

If you don't descale regularly, your appliance will ultimately stop working. This is not covered by your warranty.

الحفاظ على الجهاز في أفضل صورة
تقوم الإلكترونيات المتطورة بإخبارك عندما تلمزم إزالة الترسبات، وذلك من خلال العرض (برموز واضحة) على شاشة الجهاز.

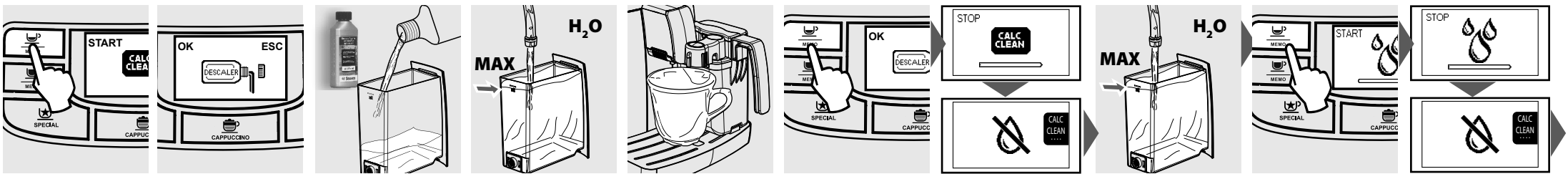
وإذا لم تقم بإزالة الترسبات بصورة منتظمة، فسيوقف جهازك عن العمل في النهاية. ولا يغطي ضمانك هذا النوع من الأعطال.

请把咖啡机保持在最佳状态。
因采用先进电子技术，需要除垢时在咖啡机的显示板上会出现明确的符号。

如果不定期除垢，机器将停止工作。这不属于免费保修范围。

請把咖啡機保持在最佳狀態。
因採用先進電子技術，需要除垢時在咖啡機之顯示板上會出現明確符號。

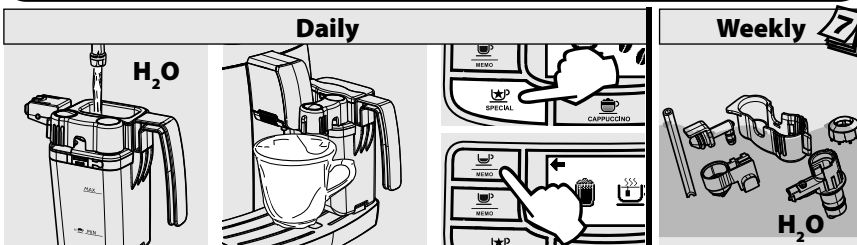
如果不定期除垢，機器將停止工作。這不屬於免費保修範圍。



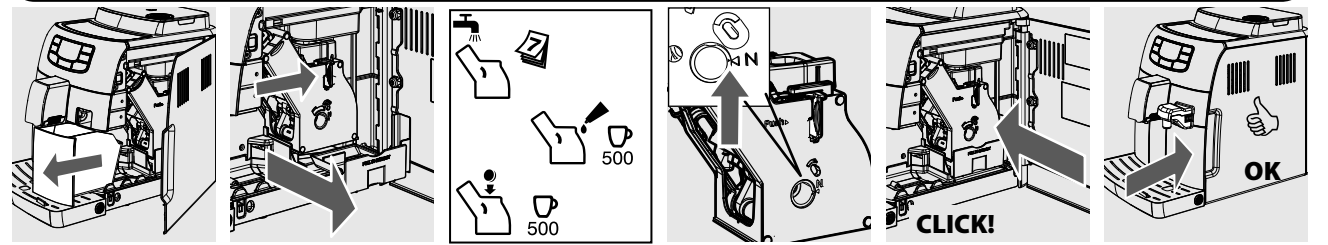
MENU FOR CUSTOMIZATION AND MAINTENANCE

MAX H ₂ O	180° 60' 30' 15'	Display contrast	4 3 2 1	ON OFF	START CALC CLEAN	YES NO DEFAULT SETTINGS
Coffee Temperature	Stand-by time set	Display contrast	Water hardness	Water filter "INTENZA+"	Descaling Menu	Default setting machine

MILK CARAFE CLEANING



BREWING UNIT CLEANING



For more information on installation or usage please contact the Philips consumer care help line :

United Kingdom: 0844 338 04 89
Hong Kong: 852 2619 9663
Singapore: +65 68823999
Ireland: 08 18 21 01 41

Israel: 03-6458844
Iran: +98 21 2227 9353
Lebanon: 961 1 684900
United Arab Emirates (Dubai): +971 4 2310300

For other phone numbers, please refer to the Warranty booklet or go to
www.philips.com/support