

PHILIPS

Induction cooker

Avance Collection

Sensor Touch

2100 W

HD4952/52



Adds life to your meals

Fast heating seals in nutrition

Nutrition is essential to good health. Philips new induction cooker shortens cooking time by 40%, and so better seals nutrients into the food. With advanced panel design, healthy eating becomes very simple for a great variety of meals.

Induction cooking seals nutrition into food

- 2100W high power for faster cooking
- EES level II, achieving 88% heating efficiency

Ideal for cooking a variety of healthy dishes

- 10 power levels suitable for different cooking needs
- 7 healthy cooking menus featuring unique heating program
- 24-hour preset timer and 2-hour cooking time settings

Advanced panel design gives intuitive cooking

- Champagne-colored glass panel is fashionable & easy-to-clean
- Ladle holder and cord storage design to increase ease of use
- Sliding sensor touch brings ultimate convenience

Very safe to operate

- Child lock keeps your kitchen safer and offers peace of mind
- Extra power switch to ensure safety
- Extra safe with multiple protection and self-check programs

Highlights

10 Power levels



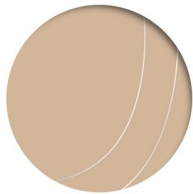
60jæ/100W, 80jæ/400W, 100jæ/600W, 120jæ/800W, 160jæ/1000W, 180jæ/1200W, 200jæ/1400W, 220jæ/1600W, 240jæ/1800W, 280jæ/2100W

7 menus



soup/porridge, steam, grill, hotpot, milk, fry, stir fry. Ex. Continuous high power heating designed for Chinese style stir-frying

Champagne-colored glass panel



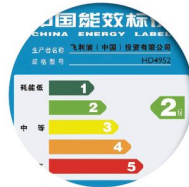
Champagne-colored full glass panel is not only fashionable but also easy to clean

Child lock



You can lock the control panel by pressing down on the 'Child lock' button for three seconds. This automatically locks the operation panel, ensuring there is no misuse from children during the cooking procedure. Press the 'Child lock' button for another 3 seconds to unlock it.

EES level II



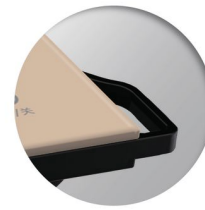
EES level II, achieving 88% heating efficiency

Extra power switch



Extra power switch to ensure safety

Ladle holder and cord storage



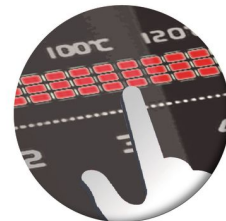
Ladle holder and cord storage design to increase ease of use

Preset timer



24 hours preset timer for soup/ porridge, steam and milk. 2-hour cooking time settings for soup/porridge, steam, grill, hotpot, fry and stir fry

Easy-to-control sensor touch



The control system uses an innovative, high-tech sensor touch feature. This avoids mechanic damage to buttons that can occur with traditional push-button operation. It is waterproof and easy to clean, and stays touch-sensitive and precise. Sliding sensor touch brings ultimate convenience

Specifications

Design specifications

Materials of main body: A-grade glass panel

Height: 70 mm

Width: 290 mm

Weight appliance: 2.5 kg

Depth: 365 mm

Color(s): Champagne

Technical specifications

Voltage: 220 V

Frequency: 50 Hz

Wattage: 2100 W

Cord length: 1.2 m

