

PHILIPS

Handheld garment steamer

Steam&Go

1200 W

Steam-on-demand

Brush

Storage bag



GC320/27



Quick crease removal with the power of steam Ideal for delicate clothes and travel

This handheld garment steamer is ideal for last moment touch-ups and difficult to iron clothes. Easy to use and quick, it is the perfect addition to your iron.

Quick crease removal

- Automatic continuous steam delivered by electric pump
- Brush accessory for a smooth finish

Easy to use

- Safe to use on delicate fabrics, like silk
- No ironing board needed
- Detachable water tank for easier filling
- Fast heat up time
- Ergonomic design for handheld operation
- Exclusive storage bag for easy storage

Refreshes clothes without washing or dry cleaning

- Steam kills up to 99.9% of bacteria*
- Removes cigarette, food and body odors

Highlights

No ironing board needed



By using the steamer you do not need an ironing board anymore, which makes ironing hassle-free.

Automatic continuous steam



Electric pump provides continuous steam for easy and quick crease removal.

Brush accessory



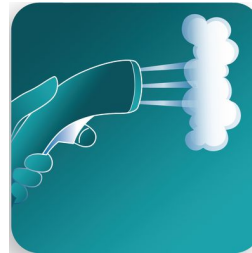
Use the brush accessory with thicker garments like coats for better steam penetration and a smoother finish.

Detachable water tank



Detachable water tank for easier filling.

Ergonomic design



The handheld steamer is light and comfortable to use thanks to the ergonomic and compact design. Just press the trigger and quickly remove creases with continuous steam.

Steam kills bacteria



Hot steam kills up to 99.9% of bacteria on clothes and helps delaying washing or dry cleaning*.

Exclusive storage bag



Use the supplied storage bag to store the handheld steamer after usage or to take along with you during your travels.

Fast heat up time



The steamer is ready to use within seconds.

Removes unwanted odors



Powerful steam removes cigarette, food and body odors.

Safe on all garments

The steamer is safe to use on all fabrics. It is a great solution for delicate fabrics like silk.

Specifications

Accessories

Brush

Calc management

Suitable for tap water

Easy to use

Heat up time: less than 1 min

Power cord length: 2 m

Safe for all fabrics: Even for delicates like silks

Storage solution: Storage bag

Water tank capacity: 60 ml

Fast & powerful crease removal

Continuous steam output: Up to 24 g/min

Power: 1200 W

Technical specifications

Voltage: 220 - 240 V

Weight and dimensions

Packaging dimensions (WxHxL): 38 x 12 x 15 cm

Product dimensions (WxHxL): 34.7 x 12.9 x 12.2 cm

Weight of iron: 0.66 kg

