

PHILIPS

Table grill

Smooth and ribbed plate

2300W



HD6340/20



Discover fuller flavours

Constant high temperature to seal in the flavour

This powerful Philips table grill has a high temperature plate to seal in the juicy flavour. It's fast-heating and has an extra thick plate that stays hot no matter what, while the ribbed-and-smooth surface cooks up many delicious delights.

Discover variety of fuller flavours

- High power for heating up fast and keeping a constant heat
- Adjustable thermostat ensures perfect results for every food
- High temperature grill plate seals in all the flavour

Smart features

- Grease drainage
- Ribbed-and-smooth top allows stir-frying, grilling and more

Only a little effort

- Non-stick grilling surface
- Dishwasher-safe parts
- Easy to store upright
- Spatula

Highlights

Dishwasher-safe parts



Dishwasher-safe parts make cleaning easy.

Upright storage



Easy to store upright; tidy storage of cord and tray.

Adjustable thermostat



Adjustable thermostat ensures the perfect result.

Spatula



Spatula for flipping, stirring and removing food.

Grease drainage



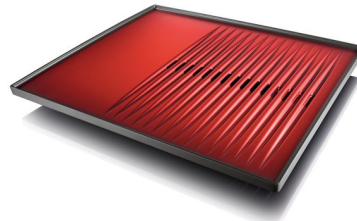
Excess grease is drained to removable tray.

High temperature grill plate



The high temperature of the Philips electric grill plate seals in all the juices and flavour of the food. That's because the moment the food comes into contact with the surface of the grill, it begins to sizzle and brown, forming a tasty crust that keeps all the goodness and flavour inside, where it belongs.

Ribbed-and-smooth grill plate



The versatile grill plate gives you the choice of cooking with either a ribbed or smooth grilling surface, so you can enjoy your food the way you like. The smooth area is suitable for stir-frying and grilling small pieces of food. The ribbed surface creates that irresistible flame-grilled effect.

Specifications

General specifications

- Cord storage
- Non-slip feet
- Cool-touch handgrips
- Temperature light
- Grease tray storage
- Integrated on/off switch

Weight and dimensions

- Weight appliance: 4.0 kg
- Product dimensions (W x H x D): 515.9 x 73 x 312 mm
- Grill plate dimensions (W x D): 300 x 370 mm

Technical specifications

- Power: 2000-2300 W
- Voltage: 220-240 V
- Frequency: 50/60 Hz
- Cord length: 1 m

Design and finishing

- Materials: Steel housing / ALU grilling plate / plastic parts
- Color(s): Metal/black

