

Philips 1900 series
Steam iron

Steam 22g/min;80g steam boost

Blue Ceralon soleplate
Anti-calc
1450 Watts

GC1960



Faster - from start to finish

Super fast water filling and emptying

There's so much more to life than household chores, so you want to get them done as quickly as possible. With its super fast filling and emptying hole, pointed tip, and smooth-gliding soleplate, this quality iron is simply built for speed.

Easily removes creases

- Vertical steam for crease removal in hanging fabrics
- Steam boost to remove stubborn creases easily
- Continuous steam up to 22 g/min for better crease removal

Easy gliding on all fabrics

- Black American Heritage coating for easy gliding

Longer lifetime

- Double Active Calc System prevents scale build-up

Faster set-up and storage

- Easy and super fast filling of the watertank
- Easy and super fast emptying of the watertank

PHILIPS

Steam iron

Steam 22g/min;80g steam boost Blue Ceralon soleplate, Anti-calc, 1450 Watts

GC1960/28

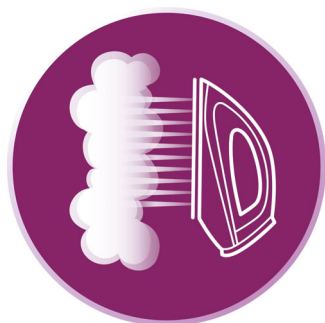
Highlights

Double Active Calc System



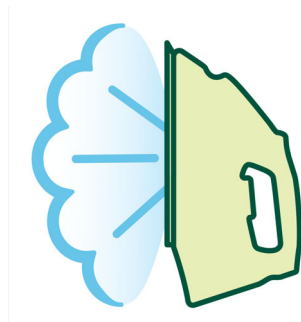
Double Active Calc system of your Philips steam iron prevents scale build-up through anti scale pills and an easy to use calc clean function.

Vertical steam



This Philips iron has a vertical steam function, for crease removal in hanging fabrics.

Steam boost



Steam boost to remove stubborn creases easily.

Easy and super fast emptying



Easy and super fast emptying of the watertank thanks to the huge emptying hole, and the sideways opening door.

Easy and super fast filling



Easy and super fast filling of the watertank thanks to the huge filling hole, and the sideways opening door of the Philips iron.

Black American Heritage



Black American Heritage coating for easy gliding on all fabrics

Up to 22 g/min of steam



Continuous steam up to 22 g/min for better crease removal.

Specifications

Fast & powerful crease removal

- Soleplate: Black American Heritage
- Steam output
- Continuous steam output: 22 g/min
- Steam boost: 80 g
- Vertical steaming
- Variable steam settings
- Spray
- Steam tip
- Power: 1750 W

Easy to use

- Water tank capacity: 180 ml
- Filling and emptying water: Sideways opening door,

- Extra large filling hole
- Power cord length: 1.8 m
- Cord freedom (swivel): 180 degree cord freedom

Calc management

- Suitable for tap water
- Calc clean solution: Double active calc clean

Technical specifications

- Weight of iron: 1.06 kg
- Product dimensions: 26.1 x 11.5 x 13.6 cm
- Voltage: 240 V
- Frequency: 50 Hz



Issue date 2016-12-14

Version: 5.0.1

© 2016 Koninklijke Philips N.V.
All Rights reserved.

Specifications are subject to change without notice.
Trademarks are the property of Koninklijke Philips N.V.
or their respective owners.

www.philips.com