

# PHILIPS

Garment Steamer

ComfortTouch

FlexHead

StyleBoard

2000W

5 steam settings



GC557/30



## Effortless crease removal from top to bottom with FlexHead and extra-long StyleBoard

Our new ComfortTouch garment steamer removes wrinkles and refreshes fabrics. With innovative FlexHead and an extra-long StyleBoard, clothes will be wrinkle free from top to bottom with maximum ease and efficiency.

### Reliable and safe

- Automatically switches to standby mode for peace of mind
- Safe on all ironable fabrics, no burns guaranteed
- Easy Rinse descaling for years of effective use
- PVC free silicon steam hose

### Refresh without washing or dry cleaning

- Continuous steam removes odors and kills 99.9%\* of bacteria

### Quick crease removal

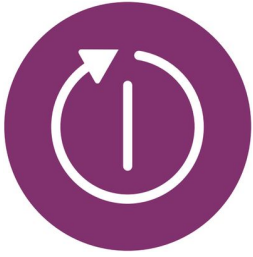
- Extra-long StyleBoard for better results from top to bottom
- Powerful continuous steam for fast crease removal
- Fabric brush for deeper steam penetration on thick garments

### More efficient with less effort

- 5 steam settings for different kinds of fabric
- Hang&Lock keeps your hanger securely in place
- With FlexHead to easily reach the bottom of garments

# Highlights

## Auto shut off



The steamer automatically switches to standby mode when the water tank is empty, so you have peace of mind even if you forget to switch it off.

## Safe on all ironable fabrics



The steamer is safe to use on all ironable fabrics and garments. The steam plate can be safely pressed against any clothing with no risk of burning – a great solution for delicate fabrics, like silk.

## Easy Rinse descaling



Prolong the lifetime of your appliance by using the Easy Rinse descaling function regularly.

## PVC free silicon steam hose



The steam hose is made of silicon material which is the safe and healthy choice for use with steam. As the safety and health of your family is important, no PVC is used in the steam hose.

## Extra-long StyleBoard

An extra long StyleBoard provides reliable support during steaming. Simply press the fabric between the steam plate and board for easier steaming with crisp results from top to bottom.

## Powerful continuous steam



Powerful continuous steam for fast crease removal

## Brush accessory



Use the brush accessory with thicker garments like coats for better steam penetration and a smoother finish.

## 5 steam settings



Set your preferred steam setting for optimal results on different fabric. Use low steam for thinner fabrics and a more powerful setting for thicker fabrics and coats.

## Hang&Lock

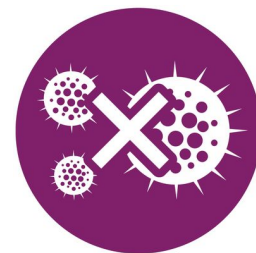


Our unique Hang&Lock feature holds your clothes hanger in place for convenient steaming. It prevents the hanger from swinging or falling off.

## With handy FlexHead

Innovative FlexHead lets you steam the bottom of garments easily, with less bending and kneeling. The flexible steam plate ensures maximum contact with the fabric so less steam escapes for efficient results.

## 99.9% bacteria-free\*



Hot steam refreshes your clothes and kills up to 99.9% of bacteria\*. Less frequent washing and dry cleaning saves time and money, and helps clothes last longer.

# Specifications

## Technology

FlexHead

## Fast crease removal

Continuous steam: up to 40 g/min

Power: Max 2000 W

Ready to use: <1 min

Variable steam: 5 levels

Voltage: 220 - 240 V

## Easy to use

Safe on all ironable fabrics: Even delicates like silk

Water tank capacity: 1800 ml

Detachable water tank

Hang&Lock

Hose length: 1.3 m

Power cord length: 1.6 m

Silicone steam hose

Auto shut off

## Board cover

Top layer: 100% Cotton

## Scale management

Descaling and cleaning: Easy Rinse

## Accessories included

Brush

Garment hanger

Glove for extra protection

Adjustable double pole

## Size and weight

Packaging dimensions (WxHxL):

37x46x64.5 cm

Product dimensions (WxHxL): 33x173x37 cm

## Guarantee

2 year worldwide guarantee

## Design

Color: White & Purple Magic

## Support for ironing

StyleBoard

