

PHILIPS

Stand Steamer

Easy Touch

1600W, 32g/min

80% larger filling hole*

2 steam settings



GC482/27



Easy de-wrinkling everyday

With the most compact stand steamer from Philips

Our new EasyTouch garment steamer is designed to be compact yet powerful. This essential steaming solution is great for quick de-wrinkling everyday.

Quick de-wrinkling

- Compact design for easy storage
- 2 steam settings for different types of fabric
- 32g/min continuous steam

Easy to use and maintain

- 1.4L water tank with 80% larger filling hole*
- Easy Rinse descaling for years of effective use
- Integrated garment hanger
- Adjustable pole for various height settings

Reliable

- Safe to use on all garments
- Steam kills more than 99% of bacteria and dust mites*
- Glove for extra protection during steaming

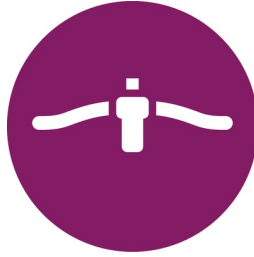
Highlights

Safe to use on all garments



The steamer is safe to use on all fabrics. It is a great solution for delicate fabrics like silk and cashmere.

Integrated garment hanger



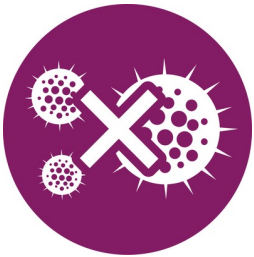
Integrated garment hanger lets you easily hang your garments like shirts, dresses and trousers while using the steamer

2 steam settings



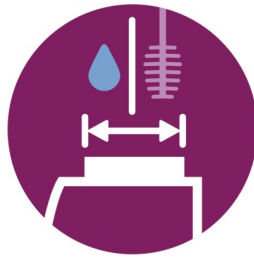
Set your preferred steam level for optimal results on different fabrics. Use low steam for thinner fabrics and a more powerful setting for thicker fabrics and coats.

Bacteria killing



Hot steam refreshes your clothes and kills more than 99% of bacteria and dust mites*. Less frequent washing and dry cleaning saves time and money, and helps clothes last longer.

80% larger filling hole*



The large 1.4L detachable water tank comes with an 80% larger filling hole* compared to predecessor models, enabling easier refilling and cleaning for better tank hygiene.

Powerful continuous steam



32g/min of powerful continuous steam is concentrated through the nozzles, enabling de-wrinkling with only a few strokes.

Glove for extra protection



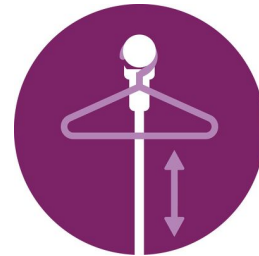
Heat proof glove included to protect your hand during steaming.

Easy Rinse descaling



Prolong the lifetime of your appliance by using the Easy Rinse descaling function regularly.

Adjustable pole



Integrated adjustable pole for hanging your garments. It is collapsible for easy storage.

Compact design



Compact design for easy storage.

Specifications

Fast crease removal

Continuous steam: 32 g/min
Power: 1600 W
Ready to use: 2 min
Vertical steam
Voltage: 220-240 V
Variable steam levels: 2

Easy to use

Safe on all ironable fabrics: Even delicates like silk
Water tank capacity: 1400 ml

Detachable water tank
Power cord length: 1.6 m
Refill any time during use

Accessories included

Adjustable pole
Garment hanger
Glove for extra protection

Size and weight

Packaging dimensions (WxHxL): 34.5 x 40 x 40 cm cm
Product dimensions (WxHxL): 27.7 x 31.5 x

30.9 cm cm
Total weight with packaging: 4.3 kg
Weight of iron: 0.33 kg
Weight of iron + base: 3 kg
Pole dimensions extended: 155 cm

Guarantee

2 year worldwide guarantee

Green efficiency

User manual: 100% recycled paper

