

# Quick start guide

GC9930

Congratulations on your purchase of the Wardrobe Care System and welcome to Philips! We hope you will enjoy the usage of this system. To fully benefit from the support that Philips offers, register your product at [www.philips.com/welcome](http://www.philips.com/welcome). Register your product now and enjoy a range of benefits including full support to your product (including downloads), privileged access to information about new products, exclusive offers and discounts, and even participate in special surveys about new releases.



1

Ironing

2

Steaming

3

Refreshing

4

Automatic  
shut-off

5

Storage

6

Auto  
CalcClean

7

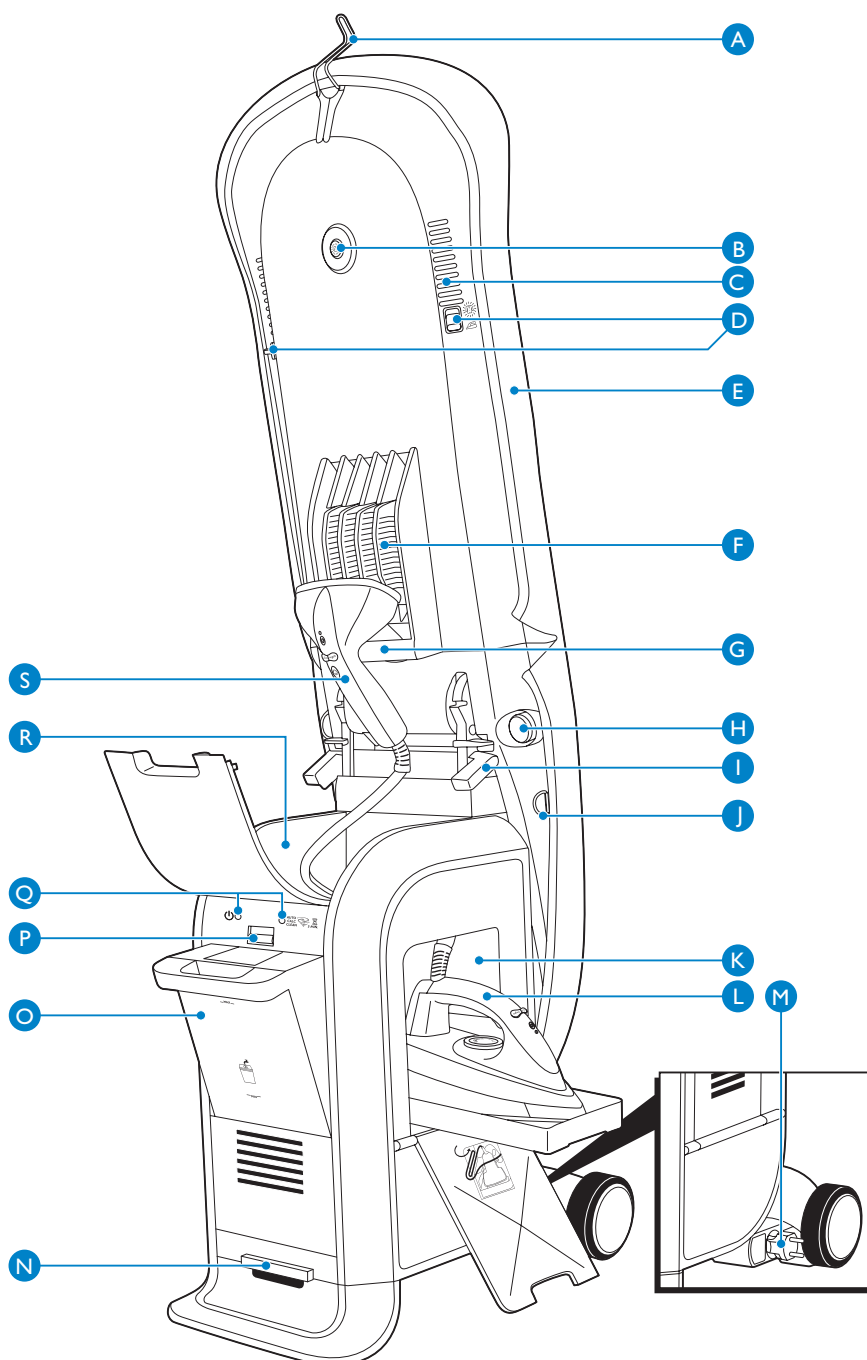
Cleaning and  
maintenance

# PHILIPS

# Exploded view

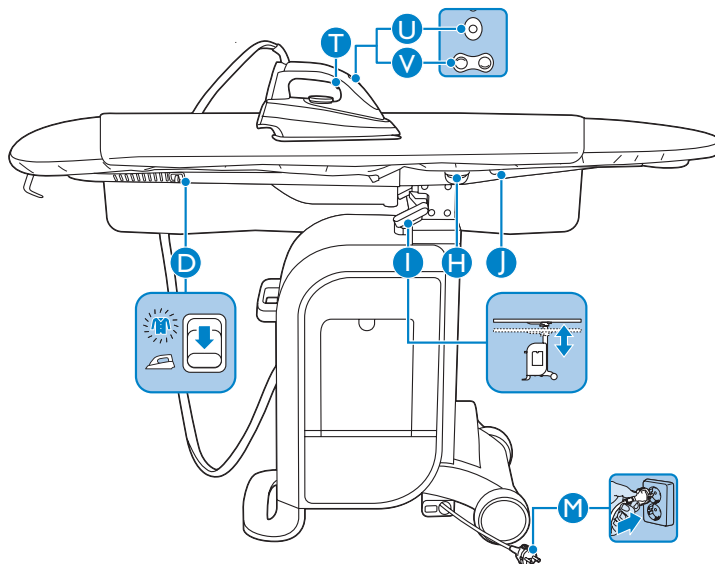
## General description

- A** Hanger hook
- B** Refreshing button
- C** Air vents
- D** Air vent slide
- E** NeverBurn ironing board cover
- F** Fan
- G** Board handle
- H** Board tilting button
- I** Height adjustment lever
- J** Locking strap
- K** Iron compartment
- L** Iron
- M** Mains plug
- N** Rinse tray
- O** Water tank
- P** Water tank release button
- Q** Power-on light and Auto CalcClean light
- R** Steamer compartment
- S** Steamer



# 1 Ironing

- T** Steam activator
- U** Iron power-on button with light
- V** Blowing/suction button
- D** Air vent slide
- I** Height adjustment lever
- H** Board tilting button
- J** Locking strap
- M** Mains plug



## \* Ironing tips and tricks

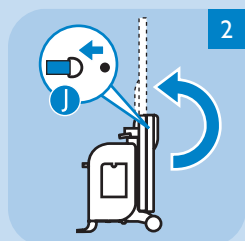
- To iron shirts, use the wide end of the board to save time and energy.
- To avoid shine and seam imprints, use the blowing mode. To hold the garment flat on the board, use the suction mode.



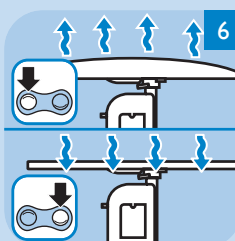
Put the mains plug **M** in an earthed wall socket. The power-on light goes on. Fill the water tank. You can use normal tap water.



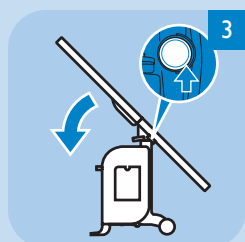
If you want to iron with steam, set the temperature dial of the iron to ●● or higher and press the steam activator **T**. **Never direct the steam at people.**  
*Note: When the temperature dial of the iron is set below ●●, no steam is produced, because the iron is not hot enough.*



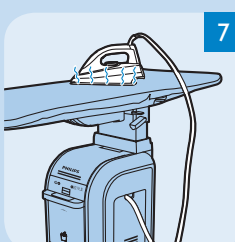
Undo the locking strap **J** and unfold the ironing board to vertical position. Set both air vent slides **D** to the ironing position.



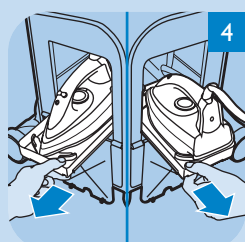
If you want to iron in the board blowing mode, press the blowing button on the iron. If you want to iron in the suction mode, press the suction button on the iron. *Note: To switch off the blowing or suction function, press the same button again.*



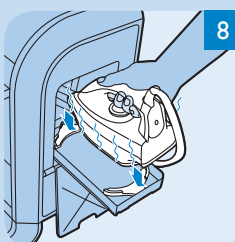
Push the board tilting button **H** and tilt the board to horizontal position. Set the ironing board to the appropriate height with the height adjustment lever **I**.



You can safely put down the hot iron on the board cover during ironing.



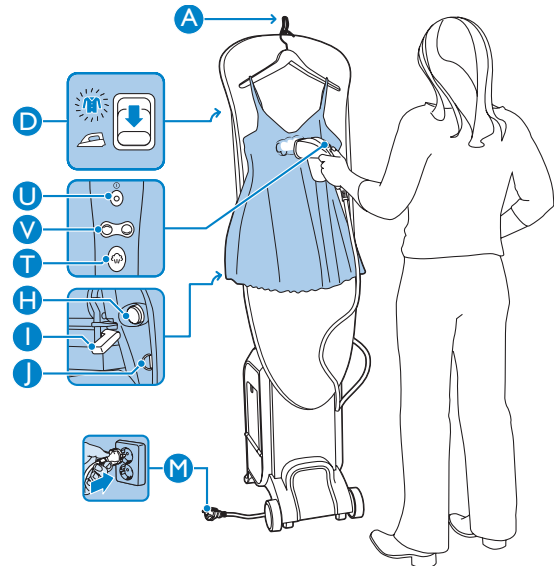
Take the iron out of the iron compartment, either from the left or right side. Press the iron power-on button **U** to switch on the iron. The power-on light goes on. **After approx. 2 minutes the iron is ready for use.**



You can store the hot iron in the heat-resistant storage compartment immediately after you have switched off the iron.

## 2 Steaming

- A** Hanger hook
- D** Air vent slide
- U** Steamer power-on button with light
- V** Blowing/suction button
- T** Steam activator
- H** Board tilting button
- I** Height adjustment lever
- J** Locking strap
- M** Mains plug

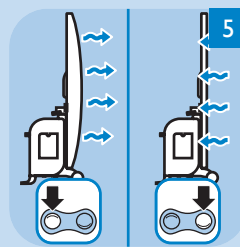


### \* Steaming tips and tricks

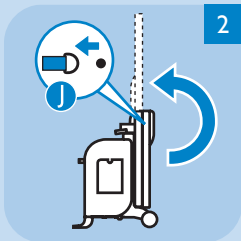
- The steamer is perfect for all delicate fabrics, such as silk, wool and cashmere.
- To steam a jacket, put it directly on the board. To steam a blouse or a dress, use the hanger hook **A**.



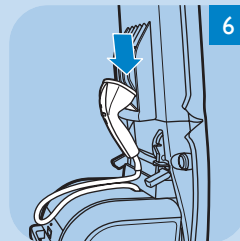
**1** Put the mains plug **M** in an earthed wall socket. The power-on light goes on. Fill the water tank. You can use normal tap water.



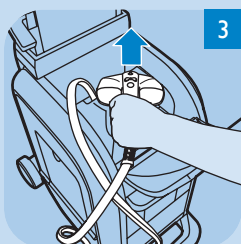
**5** If you want to use the blowing function, press the blowing button on the steamer. If you want to use the suction function, press the suction button on the steamer. *Note: To switch off the blowing or suction function, press the same button again.*



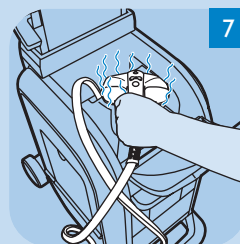
**2** Undo the locking strap **J** and unfold the ironing board to vertical position. Set both air vent slides **D** to the ironing position.



**6** You can easily hang the steamer on the board handle **G** when necessary.



**3** Take the steamer out of the steamer compartment. Press the steamer power-on button **U** to switch on the steamer. The power-on light goes on. *After approx. 2 minutes the steamer is ready for use.*



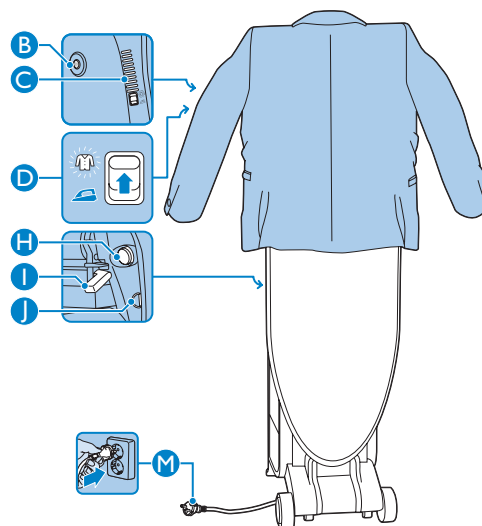
**7** You can store the hot steamer in the heat-resistant storage compartment immediately after you have switched off the steamer.



**4** Press the steam activator **T**. *Never direct the steam at people.*

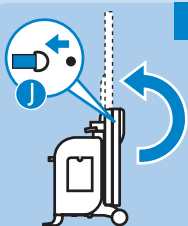
## 3 Refreshing

- B** Refreshing button
- C** Air vent
- D** Air vent slide
- H** Board tilting button
- I** Height adjustment lever
- J** Locking strap
- M** Mains plug

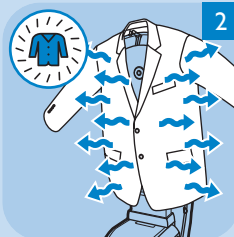


### \* Refreshing tips and tricks

- Perfect to remove food or cigarette smoke smells from jackets, coats and sweaters.
- Combine the refreshing mode with the steaming mode to refresh garments and remove creases at the same time.

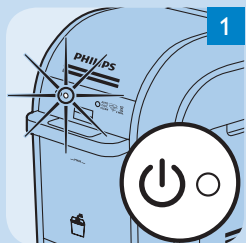


- 1 Put the mains plug **M** in an earthed wall socket. The power-on light goes on. Undo the locking strap **J** and unfold the ironing board to vertical position. Set both air vent slides **D** to the refreshing position.



- 2 Press the refreshing button **B** on the back of the ironing board. The appliance starts refreshing your garment. This process takes 10 minutes and stops automatically.

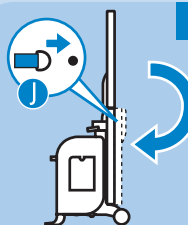
## 4 Automatic shut-off



1 This appliance is equipped with an automatic shut-off function. When the iron or steamer is not used for more than 10 minutes, the appliance automatically shuts off and is in standby mode. You hear a few beeps and the green power-on light stays on.

- 1 To deactivate the automatic shut-off function, press the power-on button on the iron or steamer once. The power-on light flashes.
- 2 Wait for the light to stop flashing. When the light stays on, the appliance is ready for use again.

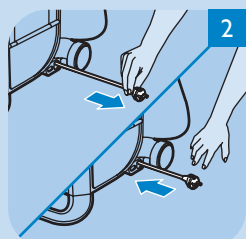
## 5 Storage



- 1 Fold the ironing board to the storage position and lock the board with the locking strap.



- 3 You can now easily move the appliance by pulling it along by the board handle.



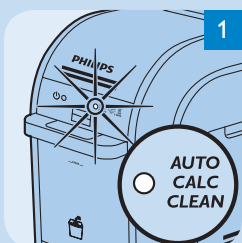
- 2 To store the cord, briefly pull it towards you and then let it go. The cord is wound up automatically.

# 6

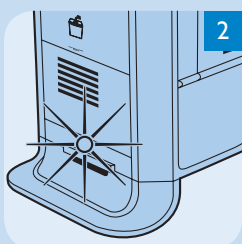
## Auto CalcClean

**Note:** The Auto CalcClean process is automatically activated at intervals of approximately 3-5 tanks of water used.

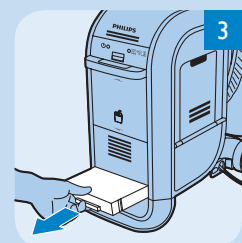
**Note:** Once the Auto CalcClean process is activated, it cannot be stopped or skipped. If the Auto CalcClean process is interrupted (for example unplugged, rinse tray removed, water tank empty), return it to the original status (for example put the mains plug in an earthed wall socket, put back the rinse tray, fill up the water tank) then the Auto CalcClean process will resume and continue until it is completed.



**1** When the Auto CalcClean process is activated the blue Auto CalcClean light flashes and the appliance beeps. This process lasts approximately 3 min. During this process it is normal to hear pumping and clicking sounds from the system.



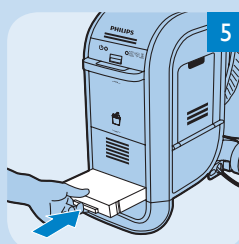
**2** After approximately 3 minutes, rinsed water is flushed into the rinse tray below. The beeping becomes faster and the red light flashes on the rinse tray.



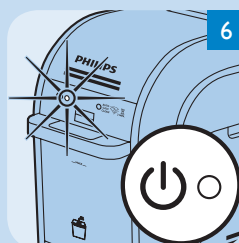
**3** Pull out the rinse tray.



**4** Empty the water into the sink. The rinse tray overflows when it is not emptied before the next Auto CalcClean session.



**5** Slide the rinse tray back into the appliance. The appliance stops beeping and the red light goes out.



**6** **Note:** When the Auto CalcClean process is finished, the power-on light goes on. The appliance starts to heat up and will be ready for use again in approx. 2 minutes. The iron will be heated up before the steam is ready for use.

# 7

## Cleaning and maintenance

### Cleaning the iron soleplate

Sometimes brown or white scale particles come out of the soleplate together with steam or water droplets. This may happen when you steam iron at a low temperature (●● or lower; e.g. ironing without steam), when there is too much water in the water tank or after the Auto CalcClean process has finished.

To clean the iron soleplate:

- 1 Set the temperature dial to 'MIN'.
- 2 Press the iron on/off button to switch on the iron and wait until the power-on light stops flashing.
- 3 Place the iron on a cotton cloth.
- 4 Press the steam activator and move the iron to and fro.

**The combination of water and steam flushes out the dirt from the soleplate.**

- 5 Repeat step 1 to 4 until the water that comes out of the soleplate is clean.

# Frequently asked questions

This chapter lists the questions most frequently asked about the appliance. If you cannot find the answer to your question, contact the Consumer Care Centre in your country.

Question	Answer
Why does the system keep beeping and flashing?	If the blue Auto CalcClean light flashes, the Auto CalcClean process may be in process. It takes about 3 minutes to complete. If the red light at the bottom rinse tray flashes, empty the rinse tray and put it back. If the red light flashes at the water tank, there is not enough water in the water tank, or the water tank is not properly placed in the water tank compartment. Fill the water tank and put it back into the water tank compartment properly.
Why does the rinse tray light flash and the appliance beep?	When the Calc-Cleaning process is finished, the rinse tray light starts flashing and the appliance beeps. Empty the rinse tray and reinsert it before you switch on the iron/steamer.
Why does the water tank light flash?	The water tank is empty or not properly placed. In this case, the water tank light flashes, the appliance beeps and the iron/steamer does not produce steam when the steam activator is pressed. Fill the water tank and insert the water tank properly by pushing it firmly into the water tank compartment.
Why does the light on the iron/steamer flash?	The iron/steamer is not yet ready for use. The boiler is still heating up. Wait for 2 minutes until the light stops flashing and stays on. Then press the steam activator on the iron/steamer to start steaming.
Why doesn't the appliance work?	There may be a connection problem. Check the mains cord, the plug and the wall socket.
Why does the iron/steamer remain cold?	The iron/steamer may not be switched on. Take the iron/steamer out of the storage compartment and press the on/off button on the iron/steamer once.
	The Auto Calc-Clean process may be in progress (the Auto CalcClean light flashes) or the rinse tray is full (the red light on the rinse tray flashes). Empty the rinse tray and slide it back into the appliance. Wait for approx. 2 minutes. The appliance is heating up. The iron will be heated up before the steam is ready for use.
Why does the iron/steamer switch off?	The auto-shut-off function may have been activated. The appliance is switched off automatically when the steam activator on the iron/steamer has not been used for 10 minutes. Press the on/off button on the iron/steamer once to deactivate the auto-shut-off function. Wait until the light on the iron/steamer stops flashing and stays on.
Why does smoke come out of the iron/steamer?	Some smoke may come out of the iron/steamer when you use the appliance for the first time because some parts of the appliance have been lightly greased. This smoke is normal and ceases after a short while.
Why does the refreshing mode switch off?	The refreshing mode runs for 10 minutes and then switches off automatically. Press the refreshing button to switch on the refreshing mode again.
Why doesn't the iron/steamer produce any steam?	There may not be enough water in the water tank or the water tank is not properly placed in the water tank compartment. Fill the water tank and put it back into the water tank compartment properly.
	The appliance may not be hot enough for steaming. Heating up takes two minutes. Wait until the light on the iron/steamer stops flashing and lights up continuously. Then press the steam activator to start steaming.
	You may not have pressed the steam activator. Press the steam activator on the handle of the iron/steamer to start steaming.
	The temperature setting of the iron is too low. Set the temperature dial of the iron to two dots or higher.
	The Auto CalcClean process may be in progress (when you see the Auto CalcClean light flashing) or the rinse tray is full when the Auto CalcClean has completed (the red light flashes at the rinse tray). Empty the rinse tray and put it back. Wait for 2 minutes for the appliance to heat up. The iron will be heated up before the steam is ready for use.
Why does the appliance produce noise?	When you hear an intermittent noise, water is intermittently pumped from the water tank into the boiler.
	When you hear a long pumping noise and the ACC LED is flashing, the Auto CalcClean process is in progress.
	If the noise continues for a long time or if it becomes very loud, first check whether the water tank is properly inserted into the appliance. If this is the case but the noise still persists, switch off the appliance and contact the Philips Consumer Care Centre or your Philips dealer.
	The appliance is equipped with an illuminated fan that runs continuously during use. This fan optimises the performance of the appliance and cannot be switched off.
Why is the airflow insufficient?	The air vent slides are probably in the wrong position. In ironing and steaming mode, the air vents must be closed by setting both air vent slides to the ironing position. It is normal for some air to come out of the vents after they have been closed; this does not affect the performance of the appliance. In refreshing mode, the air vents must be opened by setting both air vent slides to the refreshing position.
Why are there water droplets/wet spots on the ironing board?	If the ironing board is used for a prolonged period, too much steam condenses inside the ironing board, causing wet spots on the cover. After use, leave the ironing board folded out for some time to let it dry. Alternatively, press the refreshing button and let the fan operate until the appliance switches off automatically after 10 minutes. Then unplug and store the appliance.
Why do water droplets come out of the iron/steamer?	Water collects inside the hose of the iron/steamer. This means that water droplets come out of the iron/steamer during the first few seconds of steaming at the start of an ironing/steaming session and after an interruption during the session.
	The temperature setting of the iron is too low. Set the temperature dial of the iron to two dots or higher.
What is the purpose of the blowing mode?	When you use the blowing mode, the garment lies on a cushion of air. This prevents shine and seam imprints.
What is the purpose of the suction mode?	When you use the suction mode, the garment is held flat and neat on the ironing board. This ensures crease-free ironing.
How do I switch on and off the blowing/suction function?	To switch on the blowing/suction function on the board, press the blowing/suction button on the iron/steamer once. To switch off the blowing/suction function, press the same button once again. Please note that there is a gentle suction function on the board at all times which cannot be switched off. This is to optimise the ironing performance of the system.
How do I remove wrinkles on the ironing board cover?	The ironing board cover consists of 3 layers. Wrinkles on the board cover are created by folds at the bottom layers. Straighten out the wrinkles and iron over the board with steam to smoothen the wrinkles. The effect improves when you use the suction on the board after steam ironing. Press the suction button on the iron once to switch on the board suction.



## Important

Read this user manual carefully before you use the appliance and save it for future reference.

### Danger

- ▶ Never immerse the iron, the steamer or the appliance in water.

### Warning

- ▶ Check if the voltage indicated on the appliance corresponds to the local mains voltage before you connect the appliance.
- ▶ Do not use the appliance if the plug, the mains cord, the supply hoses or the appliance itself shows visible damage, or if the appliance has been dropped or is leaking.
- ▶ If the mains cord or the supply hoses of this appliance are damaged, you must have them replaced by Philips, a service centre authorised by Philips or similarly qualified persons in order to avoid a hazard.
- ▶ Never leave the appliance unattended when it is connected to the mains.
- ▶ This appliance is not intended for use by persons (including children) with reduced physical, sensory or mental capabilities, or lack of experience and knowledge, unless they have been given supervision or instruction concerning use of the appliance by a person responsible for their safety.
- ▶ Children should be supervised to ensure that they do not play with the appliance.
- ▶ Never let the mains cord and supply hoses come into contact with the hot soleplate of the iron.
- ▶ If steam escapes from the rinse tray during use, switch off the appliance and contact a service centre authorised by Philips.

### Caution

- ▶ Only connect the appliance to an earthed wall socket.
- ▶ Check the cord and the supply hoses regularly for possible damage.
- ▶ Never remove the ironing board cover while ironing or immediately after use. Always let the appliance cool down sufficiently before you remove the cover.
- ▶ The soleplate of the iron can become extremely hot and may cause burns if touched.
- ▶ When you have finished ironing/steaming, when you clean the appliance and also when you leave the appliance even for a short while, remove the mains plug from the wall socket.

- ▶ Do not move the appliance while it is in use.
- ▶ Do not use the appliance with very wet fabrics.
- ▶ Always place and use the appliance on a stable, level and horizontal surface.
- ▶ Do not put a cloth, sheet or any other cover over the appliance immediately after use.
- ▶ Always transport the appliance in storage position with the ironing board folded and the locking strap properly secured.
- ▶ This appliance is intended for household use only. Do not expose the appliance to atmospheric agents (e.g. rain, sun, cold).
- ▶ If the appliance is used improperly or for professional or semi-professional purposes or if it is not used according to the instructions in the user manual, the guarantee becomes invalid and Philips refuses any liability for damage caused.

### Type of water to be used

- ▶ Do not put perfume, vinegar, starch, descaling agents, ironing aids or other chemicals in the water tank.
- ▶ You can use normal tap water. If the tap water in your area is very hard, we advise you to mix it with an equal amount of distilled water.

## Environment



Do not throw away the appliance with the normal household waste at the end of its life, but hand it in at an official collection point for recycling. By doing this, you help to preserve the environment.

## Electromagnetic fields (EMF)

This Philips appliance complies with all standards regarding electromagnetic fields (EMF). If handled properly and according to the instructions in this user manual, the appliance is safe to use based on scientific evidence available today.

## Guarantee and service

If you need service or information or if you have a problem, please visit the Philips website at [www.support.philips.com](http://www.support.philips.com) or contact the Philips Consumer Care Centre in your country (you find its phone number in the worldwide guarantee leaflet). If there is no Consumer Care Centre in your country, go to your local Philips dealer.

