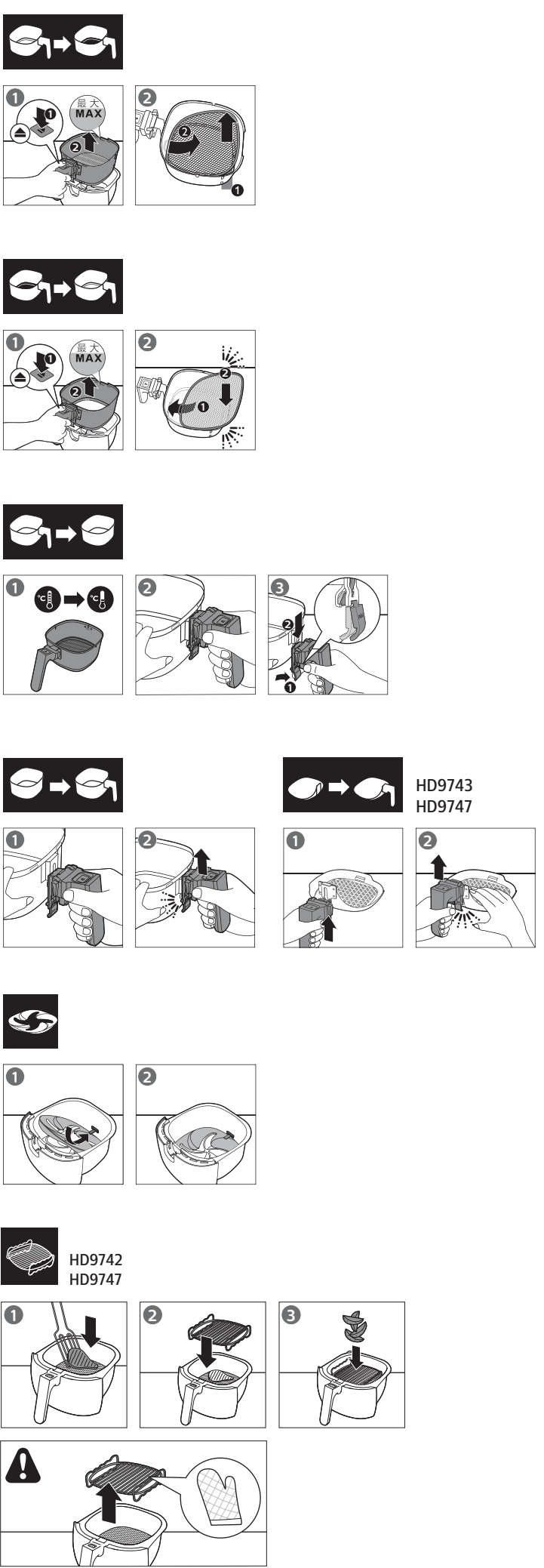
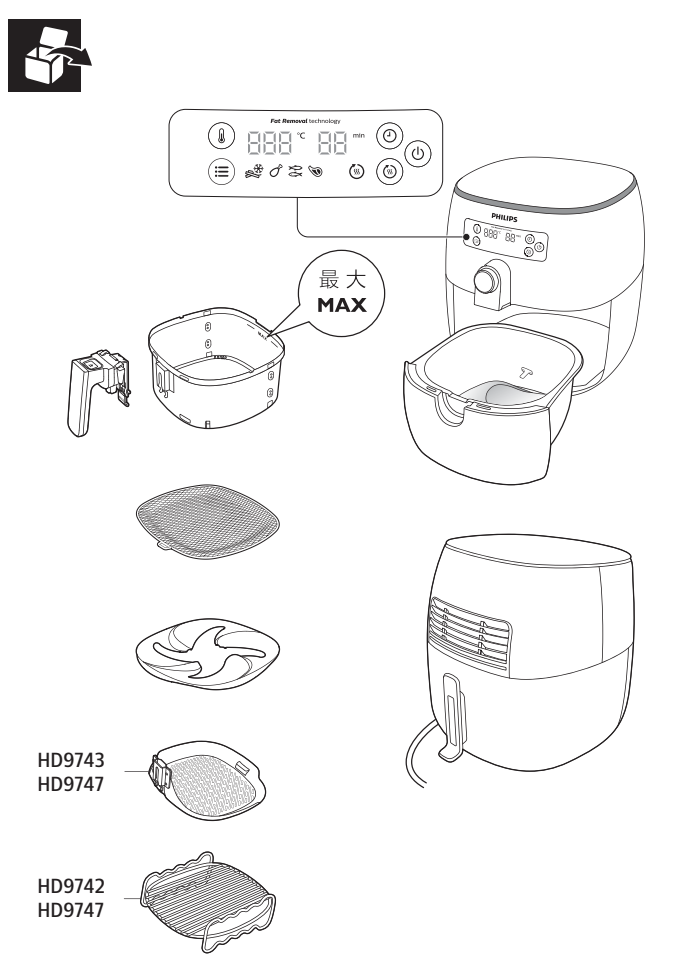


电烤炉食品接触材料信息				
请根据说明书要求正常使用本产品。 本产品食品接触用材料及部件符合GB 4806.1-2016 以及相应食品安全国家标准要求，具体信息如下：				
食品接触用材料	用途	执行标准	备注	
金属	不锈钢 06Cr19Ni10	内锅底 篮网	GB 4806.9-2016	
	不锈钢06Cr18Ni9Cu3	锅钉	GB 4806.9-2016	
	不锈钢 06Cr19Ni10	弹片	GB 4806.9-2016	
	不锈钢 06Cr19Ni10	内锅可移 顶盖	GB 4806.9-2016	
	基材：铁 镀层：铝	内锅	GB 4806.9-2016	
	基材：铁 镀层：铝	烤盘	GB 4806.9-2016	
	不锈钢 06Cr19Ni10	烤盘手柄	GB 4806.9-2016	
	基材：铝	鱼盘	GB 4806.9-2016	
	不锈钢 06Cr19Ni10	烤针	GB 4806.9-2016	
涂层 涂料	聚苯硫醚含氟（聚四氟乙烯）不粘涂 料	内锅涂层	GB 4806.10-2016	
	黑色底漆（含聚酰 胺-酰亚胺）和黑色 闪银面漆(含聚四氟 乙烯) 不粘涂料	鱼盘涂层	GB 4806.10-2016	
	黑色底漆（含聚酰 胺-酰亚胺）和黑色 闪银面漆(含聚四氟 乙烯) 不粘涂料	烤盘涂层	GB 4806.10-2016	
	黑色底漆（含聚酰 胺-酰亚胺）和黑色 闪银面漆(含聚四氟 乙烯) 不粘涂料	内锅底篮 涂层	GB 4806.10-2016	
备注 注 1：产品不宜作为容器长期存储食品。 注 2：本系列产品包含以上食品接触材料，部分机型可能不含个别材料，以实际产品为准！				



使用产品前请仔细阅读
本使用说明书
保留备用

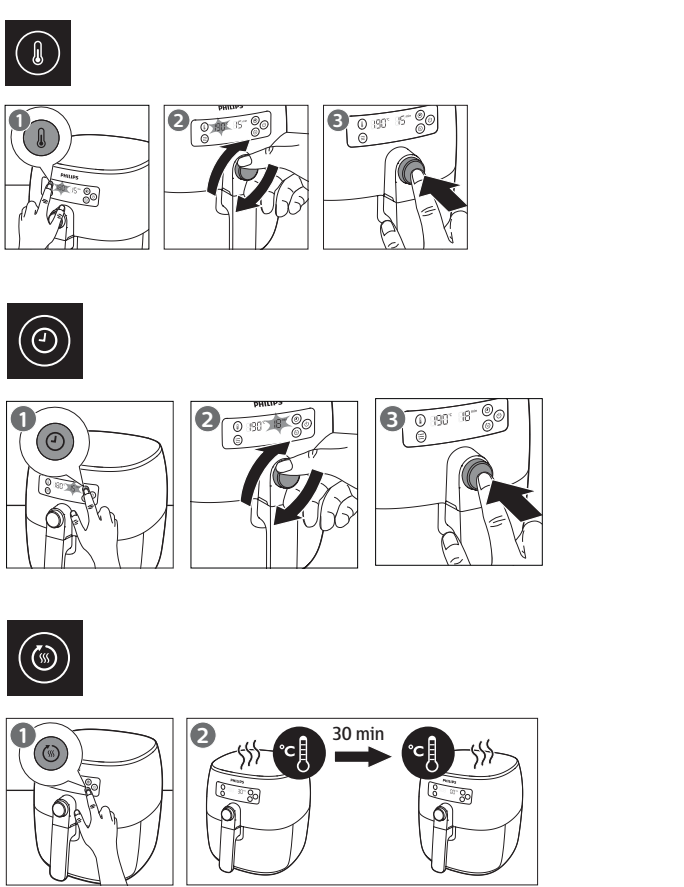


Specifications are subject to change without notice.
技术规格如有变更，恕不另行通知
© 2021 Philips Domestic Appliances Holding B.V.
All rights reserved.
保留所有权利

出版日期：2021-04-16

100% recycled paper
100% 循环再造纸
3000 042 07762 A

	✓	✓	✗
	✓	✓	✗
	✓	✓	✗
	✓	✓	✓



PHILIPS

产品：飞利浦电烤炉
型号：HD9749
额定电压：220V～
额定频率：50Hz
额定输入功率：1300 W
生产日期：请见产品本体
产地：中国广东深圳

飞利浦家电（中国）投资有限公司
上海市静安区灵石路 728 弄 20 号 201 室
全国顾客服务热线：4008 800 008

本产品根据国标 GB4706.1-2005, GB4706.14-2008, 制造

PHILIPS

产品：飞利浦电烤炉
型号：HD9741
额定电压：220V～
额定频率：50Hz
额定输入功率：1300 W
生产日期：请见产品本体
产地：中国广东深圳

飞利浦家电（中国）投资有限公司
上海市静安区灵石路 728 弄 20 号 201 室
全国顾客服务热线：4008 800 008

本产品根据国标 GB4706.1-2005, GB4706.14-2008, 制造

ENGLISH

Introduction

Congratulations on your purchase and welcome to Philips!
To fully benefit from the support that Philips offers, register your product at www.philips.com/welcome.

Important

Read this important information carefully before you use the appliance and save it for future reference.

- Danger**
- Never immerse the appliance in water nor rinse it under the tap.
 - Do not let any water or other liquid enter the appliance to prevent electric shock.
 - Always put the ingredients to be fried in the basket, to prevent them from coming into contact with the heating elements.
 - Do not cover the air inlet and the air outlet openings while the appliance is operating.
 - Do not fill the pan with oil as this may cause a fire hazard.
 - Do not use the appliance, if the plug, the mains cord or the appliance itself is damaged.
 - Never touch the inside of the appliance while it is operating.
 - Never put any amount of food that exceeds the maximum level indicated in the basket.
 - Always make sure heater is free and no food stuck in heater.

- Warning**
- If the supply cord is damaged, it must be replaced by Philips, its service agent or similarly qualified persons in order to avoid a hazard.
 - Only connect the appliance to an earthed wall socket. Always make sure that the plug is inserted into the wall socket properly.
 - This appliance is not intended to be operated by means of an external timer or a separate remote-control system.
 - The accessible surfaces may become hot during use. (fig. 1)
 - Children should be supervised to ensure that they do not play with the appliance.
 - This appliance is not intended for use by persons (including children) with reduced physical, sensory or mental capabilities, or lack of experience and knowledge, unless they have been given supervision or instruction concerning use of the appliance by a person responsible for their safety.
 - Cleaning and user maintenance shall not be made by children without supervision.
 - Do not place the appliance against a wall or against other appliances. Leave at least 10 cm free space at the back, on both sides and above the appliance. Do not place anything on top of the appliance.
 - During hot air frying, hot steam is released through the air outlet openings. Keep your hands and face at a safe distance from the steam and from the air outlet openings. Also, be careful of hot steam and air when you remove the pan from the appliance.
 - Never use light ingredients or packing paper in the appliance.
 - Accessible surfaces may become hot during use.
 - Storage of potatoes: The temperature shall be appropriate to the potato variety stored and it shall be above 6 °C to minimize the risk of acrylamide exposure in the prepared foodstuff.
 - Do not place the appliance on or near a hot gas stove or all kinds of electric stove and electric cooking plates, or in a heated oven.
 - Never fill the pan with oil.
 - This appliance is designed to be used at ambient temperatures between 5°C and 40°C.
 - Check if the voltage indicated on the appliance corresponds to the local mains voltage before you connect the appliance.
 - Keep the mains cord away from hot surfaces.
 - Do not place the appliance on or near combustible materials such as a tablecloth or curtain.
 - Do not use the appliance for any other purpose than described in this manual and use only original Philips-accessories.
 - Do not let the appliance operate unattended.
 - The pan, basket and fat reducer becomes hot during and after use of the appliance, always handle carefully.
 - Thoroughly clean the parts that come into contact with food before you use the appliance for the first time. Refer to the instructions in the manual.

- Caution**
- This appliance is intended for normal household use only. It is not intended for use in environments such as staff kitchens of shops, offices, farms or other work environments. Nor is it intended to be used by clients in hotels, motels, bed and breakfasts and other residential environments.
 - Always disconnect the appliance from the supply if it is left unattended and before you assemble, disassemble, store or cleaning.
 - Place the appliance on a horizontal, even and stable surface.
 - If the appliance is used improperly or for professional or semi-professional purposes or if it is not used according to the instructions in the user manual, the guarantee becomes invalid and Philips refuses any liability for damage caused.
 - Always return the appliance to a service center authorised by Philips for examination or repair. Do not attempt to repair the appliance yourself, otherwise the guarantee becomes invalid.
 - Always unplug the appliance after use.
 - Let the appliance cool down for approximately 30 minutes before you handle or clean it.
 - Make sure the ingredients prepared in this appliance come out golden yellow instead of dark or brown. Remove burnt remnants. Do not fry fresh potatoes at a temperature above 180°C (to minimise the production of acrylamide).
 - Do not press the basket release button during shaking.
 - Do not touch the trigger immediately when removing from hot device.

Electromagnetic fields (EMF)

This Philips appliance complies with all applicable standards and regulations regarding electromagnetic fields.

Recycling

- Do not throw away the product with the normal household waste at the end of its life, but hand it in at an official collection point for recycling. By doing this, you help to preserve the environment.
- Follow your country's rules for the separate collection of electrical and electronic products. Correct disposal helps prevent negative consequences for the environment and human health.

Guarantee and support

If you have need information or support, please visit www.philips.com/support or read the separate worldwide guarantee leaflet.

Troubleshooting

This chapter summarises the most common problems you could encounter with the appliance. If you are unable to solve the problem with the information below, visit www.philips.com/support for a list of frequently asked questions or contact the Consumer Care Centre in your country.

Problem	Possible cause	Solution
The outside of the appliance becomes hot during use.	The outside of the appliance becomes hot because the heat inside radiates to the outside walls.	This is normal. All handles, knobs and buttons that you need to touch during use stay cool enough to touch. <div><div></div><div>The pan, baking pan, basket, double-layer rack, non-stick grill pan and the inside of the appliance always become hot when the appliance is switched on to ensure the food is properly cooked. These parts are always too hot to touch.</div><div>If you leave the appliance switched on for a longer time, some areas get too hot to touch. These areas are marked on the appliance with the following icon:<div><div></div></div></div><div>As long as you are aware of the hot areas and avoid touching them, the appliance is completely safe to use.</div></div>
My home-made fries do not turn out as I expected.	You did not use the right potato type.	To get the best results, use fresh, slightly floury potatoes. If you need to store the potatoes, do not store them in a cold environment like in a fridge. Choose potatoes whose package states that they are suitable for frying.
	The amount of ingredients in the basket is too big.	Follow the instructions in this user manual to prepare home-made fries (see 'Food table' or download the free Airfryer App).
	Certain types of ingredients need to be shaken halfway through the cooking time.	Follow the instructions in this user manual to prepare home-made fries (see 'Food table' or download the free Airfryer App).
The Airfryer does not switch on.	The appliance is not plugged in.	When you switch on the appliance, the temperature indication starts blinking on the display. If you do not see anything on the display, check if the plug is inserted in the wall outlet properly.
	Several appliances are connected to one outlet.	The Airfryer has a high wattage. Try a different outlet and check the fuses.
I see some peeling off spots inside my Airfryer.	Some small spots can appear inside the pan of the Airfryer due to the incidental touching or scratching of the coating (e.g. during cleaning with harsh cleaning tools and/ or while inserting the basket).	You can prevent damage by lowering the basket into the pan properly. If you insert the basket at an angle, its side may knock against the wall of the pan, causing small pieces of coating to chip off. If this occurs, please be informed that this is not harmful as all materials used are food-safe.
White smoke comes out of the appliance.	You are preparing fatty ingredients.	The oil or rendered fat in the pan may cause white smoke and the pan may get hotter than usual. You can carefully pour off any excess oil or fat from pan and then continue cooking. You can also place the splatter-proof lid on the basket.
	The pan still contains greasy residues from previous use.	White smoke is caused by greasy residues heating up in the pan. Always clean the pan and basket thoroughly after every use.
	Marinade, liquid or meat juices are splattering in the rendered fat or grease.	Place the splatter-proof lid on the basket.
	Breading or coating did not adhere properly to the food.	Tiny pieces of airborne breading can cause white smoke. Firmly press breading or coating to food to ensure it sticks.
My display shows 5 dashes as illustrated in the picture below. <div><div></div></div>	This is an error code.	<div><div></div><div>1. Unplug the appliance and let it rest for 5 minutes before plugging in again.</div><div>2. If your display still shows the dashes, call the Philips service hot line or contact the Consumer Care Center in your country.</div></div>

简体中文

简介

感谢您的惠顾，欢迎光临飞利浦！为了您能充分享受飞利浦提供的支持，请在 www.philips.com/welcome 上注册您的产品。

注意事项

使用产品之前，请仔细阅读本重要信息，并妥善保管以供日后参考。

- 危险**
- 切勿将产品浸入水中，也不要来自来水龙头下冲洗。
 - 切勿让水或其它液体进入该产品，以免发生触电。
 - 始终将食材放置在炸篮中煎炸，以免接触到加热元件。
 - 产品正在工作时，不要盖住其进风口和出风口。
 - 切勿在煎锅中倒油，因为这可能导致火灾危险。
 - 如果插头、电源线或产品本身受损，请勿使用本产品。
 - 切勿在产品工作时触碰到它的内部。
 - 切勿放入超出炸篮规定上限的食物量。
 - 始终确保加热器上没有杂物，并且没有食物卡在其中。
- 警告**
- 如果电源线损坏，为避免危险，必须由飞利浦、其服务代理商或类似的专职人员进行更换。
 - 产品只能使用带接地线的插座。务必确保插头已正确插入电源插座。
 - 本产品不能利用外部定时器或独立的遥控器系统操作。
 - 产品的可接触表面在使用过程中可能会变得很热。（图1）
 - 应照看好儿童，确保他们不玩耍本产品。
 - 本产品不适合由肢体不健全、感觉或精神上有障碍或缺乏相关经验和知识的人（包括儿童）使用，除非有负责其安全的人对他们使用本产品进行监督或指导。
 - 不要让儿童在无人监督的情况下进行清洁和保养。
 - 请勿将产品靠墙或贴靠其他产品。产品的后面、两侧和上方应至少留出 10 厘米的空间。切勿在本产品上放置任何物品。
 - 在利用热空气煎炸期间，会从出风口释放出高温蒸汽。手部和脸部应与蒸汽和出风口保持安全距离。当您 will 煎锅从产品中取出时，请小心高温蒸汽和热气。
 - 切勿在产品中使用轻质原料或烘焙纸。
 - 使用产品时，其可接触的表面可能会变得很热。
 - 土豆贮存：**温度应适合存放各种土豆，应高于 6°C 以尽可能地降低预制食品中丙烯酰胺的暴露风险。
 - 切勿将产品置于加热的煤气炉或各种类型的电炉和电烤盘上方或附近，或者加热的炉具内。
 - 切勿在煎锅中倒油。
 - 本产品设计使用环境温度温度为 5°C 到 40°C 之间。
 - 在将产品连接电源之前，请先检查产品所标电压与当地的供电电压是否相符。
 - 不要让电源线接触到高温的表面。
 - 切勿将产品放置在诸如桌布、窗帘等易燃材料的上面或附近。
 - 切勿将本产品用于本用户手册中所述用途以外的任何用途，且仅使用飞利浦原装配件。
 - 产品使用时必须有人看管。
 - 在本产品使用期间和使用后，煎锅、炸蓝和减脂器会变热，请务必小心处理。
 - 在初次使用产品之前，请彻底清洗与食品接触的部件。请参阅手册中的说明。
- 警告**
- 本产品仅限于普通家用。不得用于商店、办公场所、农场或其他工作环境的员工食堂。也不得由酒店、汽车旅馆、提供住宿和早餐的场所及其他住宿环境中的客人使用。
 - 产品无人看管时和拆装、存储或清洁之前，务必断开产品电源。
 - 将产品放在一个水平、平滑、稳固的表面上。
 - 对本产品使用不当，或者将其用于专业、半专业用途，或者没有根据本用户手册中的说明进行使用，此类情况下保修将失效，飞利浦对此类损坏概不负责。
 - 本产品应送往由飞利浦授权的服务中心检查或修理。请不要尝试自己修理产品，否则产品维修保证书将会无效。
 - 使用后务必拔下产品的插头。
 - 在处理或清洁产品之前，请先让产品冷却大约 30 分钟。
 - 确保在本产品中烹调的食材最终呈金黄色，而不是黑色或棕色。烧焦的部分应该丢弃。请勿在高于 180°C 的温度下煎炸新鲜土豆（以尽可能减少丙烯酰胺的产生）。
 - 切勿在翻动过程中按到炸篮拆卸按钮。
 - 从热设备取下时，切勿立即触摸开关。

电磁场 (EMF)

本飞利浦产品符合所有有关电磁场的适用标准和法规。

回收

- 弃置产品时，请不要将它与一般生活垃圾一同丢弃，应将其交给官方指定的回收中心。这样做有利于环保。
- 请遵循您所在国家/地区的电器及电子产品分类回收规定。正确弃置产品有助于避免对环境 and 人类健康造成负面影响。

产品中有害物质的名称及含量						
部件名称	有害物质					
	铅 (Pb)	汞 (Hg)	镉 (Cd)	六价铬 (Cr(VI))	多溴联苯 (PBB)	多溴二苯醚 (PBDE)
热敏电阻	×	○	○	○	○	○
线路板	×	○	○	○	○	○
本表格依据 SJ/T 11364 的规定编制。 ○：表示该有害物质在该部件所有均质材料中的含量均在 GB/T 26572 规定的限量要求以下。 ×：表示该有害物质至少在该部件的某一均质材料中的含量超出 GB/T 26572 规定的限量要求。						

* 该表格中所显示的“有害物质”在产品正常使用情况下不会对人体和环境产生任何伤害。

* 该表格中所显示的“有害物质”及其存在的部件向消费者和回收处理从业者提供相关物质的存在信息，有助于产品废弃时的妥善处理。

保修和支持

如果需要信息或支持，请访问 www.philips.com/support 或阅读单独的全球保修卡。

故障种类和处理方法

本章归纳了使用本产品时最常见的一些问题。如果您无法根据以下信息解决问题，请访问 www.philips.com/support 查阅常见问题列表，或联系您所在国家/地区的客户服务中心。

问题	可能的原因	解决方法
本产品的外部在使用期间会发热。	产品的外表面会发热，是因为内部的热量辐射到了外壁。	这是正常的。使用期间需触摸的手柄、旋钮和按钮会保持足够冷却。
		启动产品后，为确保适当地烹饪食物，烘烤篮、炸篮、双层烤架、不粘烤盘以及产品内部始终会发热。这些部件始终发烫，不能触摸。
		如果您让本产品长时间启动，某些区域可能发烫，不能触摸。产品上的这些区域使用以下图标标记： <div><div></div></div> 只要您注意发热区域并且避免触摸，本产品在使用时就绝对安全。
自制炸薯条没有我预期的一样松脆。	您没有使用正确的土豆品种。	为获得最佳的效果，请使用新鲜、略带粉质的土豆。如果需要存放土豆，请不要将其存放在寒冷环境下，例如冰箱。选择其包装上标明适合制作炸薯条的土豆。
	炸篮中的食材量太多。	请按照本用户手册中的说明自制炸薯条（请参阅“食物表”或下载免费的 Airfryer 空气炸锅应用）。
	某些原料需要在烹饪中途进行翻动。	请按照本用户手册中的说明自制炸薯条（请参阅“食物表”或下载免费的 Airfryer 空气炸锅应用）。
无法启动 Airfryer 空气炸锅。	产品电源插头没有插上。	启动产品后，显示屏上的温度指示将开始闪烁。如果显示屏上没有任何显示，请检查插头是否已正确插入电源插座。
	多个产品连接至同一插座。	Airfryer 空气炸锅拥有高功率。请尝试其他插座并检查保险丝。
我的 Airfryer 空气炸锅内有一些剥落点。	Airfryer 空气炸锅内可能会由于意外接触或刮擦涂层而出现小的剥落点（例如在使用粗糙清洁工具清洁炸锅和/或插入炸篮的过程中）。	您可以通过将炸篮妥善地向下放入煎锅来防止出现损坏。如果您倾斜着插入炸篮，其侧面可能会碰撞煎锅壁，从而导致小块涂层剥落。如果发生这种情况，请注意这是无害的，因为我们使用的所有材料都是食品级安全材料。
从产品中冒出白烟。	您在烹饪富含脂肪的食材。	煎锅内的油份或油脂会产生白色的油烟，同时煎锅可能比正常状态下更热。您可以小心地倒掉煎锅内的多余油份或油脂，然后继续烹饪。您也可以在炸篮上盖上防溅盖。
	煎锅中还残留了上次使用后的油脂。	白烟是由于油脂在煎锅中加热而产生的。确保您在每次使用后都彻底地清洁煎锅和炸篮。
	煎炸的油脂会溅出腌料、液体或肉汁。	在炸篮上盖上防溅盖。
如下图所示，我的显示屏显示 5 根横线。 <div><div></div></div>	这是错误代码。	<div><div></div><div>1. 拔下产品电源插头，等待 5 分钟，然后再插上电源。</div><div>2. 如果您的显示屏仍显示横线，请拨打飞利浦服务热线或联系您所在国家/地区的客户服务中心。</div></div>