



EN User manual ZH-CN 用户手册
IN Buku Petunjuk Pengguna

PHILIPS



Specifications are subject to change without notice
© 2013 Koninklijke Philips Electronics N.V.
All rights reserved.

HD3011_3012_3017_3018_3027_UM_IN_V2.0



English

1 Your rice cooker

Congratulations on your purchase, and welcome to Philips!
To fully benefit from the support that Philips offers, register your product at www.philips.com/welcome.

2 What's in the box

Rice cooker main unit Steam basket
Rice scoop Measuring cup
User manual Safety leaflet
Warranty card Power cord

Overview

① Detachable inner lid (HD3012, HD3018 and HD3027 only)	⑧ Outer lid
② Inner pot	⑨ Lid release button
③ Water level indications	⑩ Detachable steam vent cap
④ Scoop holder	⑪ Main body
⑤ Heating element	⑫ Power socket
⑥ Control Key	⑬ Keep warm indicator
⑦ Steam water storage	⑭ Cooking indicator

3 Using the rice cooker

Before first use

- Take out all the accessories from the inner pot. Remove the packaging material of the inner pot.
- Clean the parts of the rice cooker thoroughly before using the rice cooker for the first time (see chapter 'Cleaning').

Note

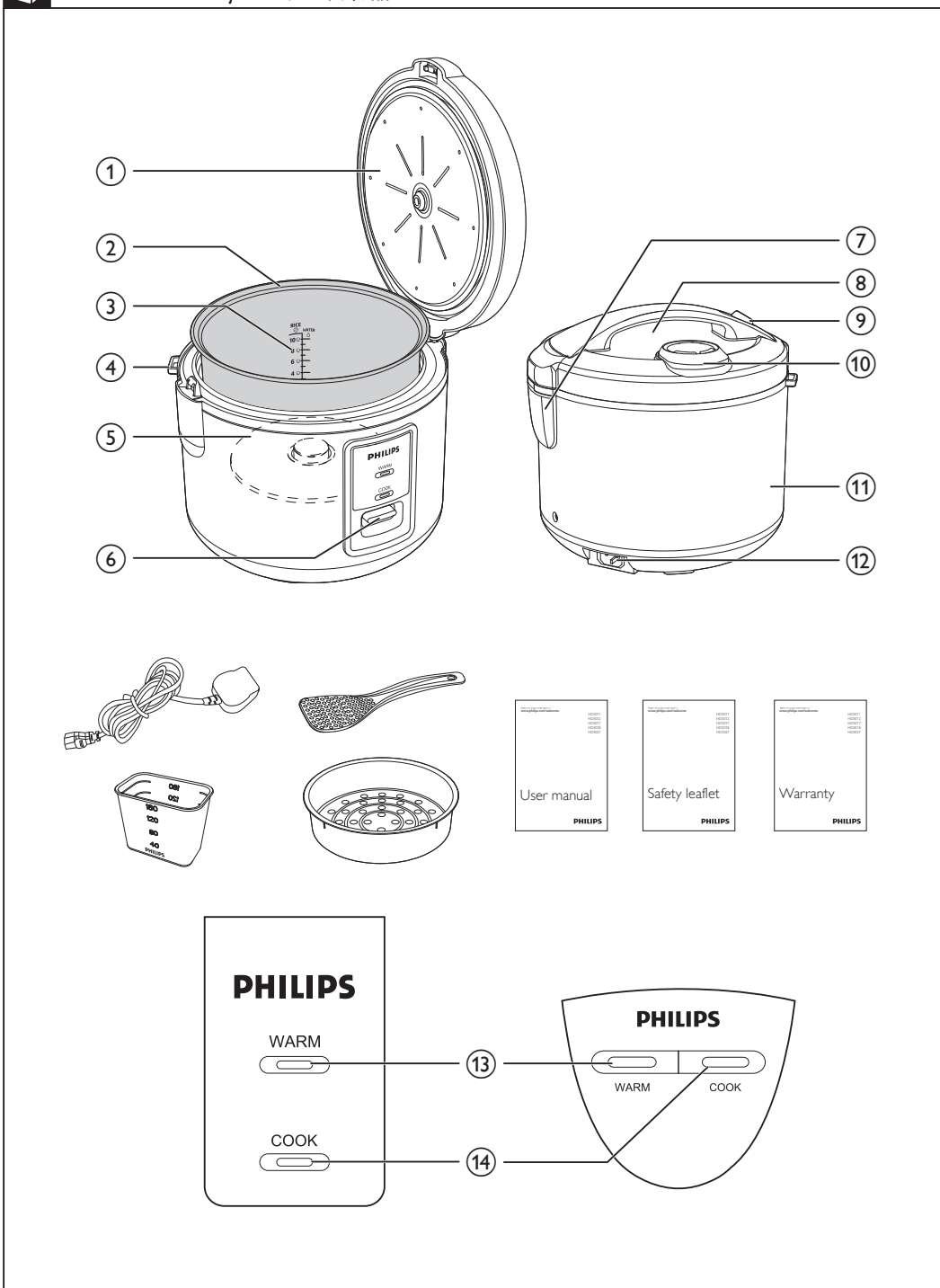
- Make sure all parts are completely dry before you start using the rice cooker.

Preparations before use

Before using the rice cooker, you need to follow the preparation:

- Measure the rice using the measuring cup provided.
- Wash the rice thoroughly.
- Put the pre-washed rice in the inner pot.
- Add water to the level indicated on the scale inside the inner pot that corresponds to the number of cups of rice used. Then smooth the rice surface.
- Press the release lever to open the lid.
- Put the inner pot in the rice cooker. Check if the inner pot is in proper contact with the heating element.
- Close the lid of the rice cooker, put the plug in the power socket.

What's in the box Contenido de la caja 包装盒内物品



Note

- Each cup of uncooked rice normally gives 2 bowls of cooked rice. Do not exceed the quantities indicated on the inside of the inner pot.
- The level marked inside the inner pot is just an indication. You can always adjust the water level for different types of rice and your own preference. If the voltage is unstable at the area you live, it is possible that the rice cooker overflows.
- Besides following the water level indications, you can also add rice and water at 1:1-1.2 ratio for rice cooking. Do not exceed the quantities indicated on the inside of the inner pot.
- Make sure that the outside of the inner pot is dry and clean, and that there is no foreign residue on the heating element or the magnetic switch.

Cooking rice

- Follow the steps in "Preparations before use".
- Press down the control key, and the cooking (**COOK**) indicator lights up.
- When the cooking is finished, the cooking (**COOK**) indicator will be off.
- The rice cooker switches to keep warm mode automatically, and the keep warm (**WARM**) indicator lights up.

Note

- Do not exceed the volume indicated nor exceed the maximum water level indicated in the inner pot, as this may cause the rice cooker to overflow.

Steaming

- Measure a few cups of water with the measuring cup.
- Pour the water into the inner pot.
- Put the steam basket into the inner pot.
- Put the food into the steam basket.
- Close the lid of the rice cooker, and put the plug in the power socket.
- Push down the control key, and the cooking (**COOK**) indicator lights up.
- When the steaming is finished, pull up the control key.
- The rice cooker switches to keep warm mode, and the keep warm (**WARM**) indicator lights up.

Note

- Use a kitchen glove or a cloth, as the plate and steam basket will be very hot.
- You can cook rice while steaming food. Do not exceed the volume indicated nor immerse the steam basket in the water, as this may cause the rice cooker to overflow.
- You can adjust the water level as needed.

Specifications

Model Number	HD3011/ HD3012	HD3017/ HD3018	HD3027
Rated power output	400W	400W	400W
Rated capacity	3.0L	5.0L	5.0L
Rice volume (cups)	1L (1-6)	1.8L (1-10)	1.8L (1-10)

4 Cleaning and Maintenance

Note

- Unplug the rice cooker before starting to clean it.
- Wait until the rice cooker has cooled down sufficiently before cleaning it.

Interior

- Inside of the outer lid and the main body:
- Wipe with wrung out and damp cloth.
 - Make sure to remove all the food residues stuck to the rice cooker.

Heating element:

- Wipe with wrung out and damp cloth.
- Remove food residues with wrung out and damp cloth or toothpicks.

Exterior

Surface of the outer lid and outside of the main body:

- Wipe with a cloth damped with soap water.
- ONLY use soft and dry cloth to wipe the control panel.
- Make sure to remove all the food residues around the control buttons.

Accessories

Rice scoop, inner pot, steam basket, steam vent cap and detachable inner lid (HD3012, HD3018 and HD3027 only):

- Soak in hot water and clean with sponge.

5 Environment

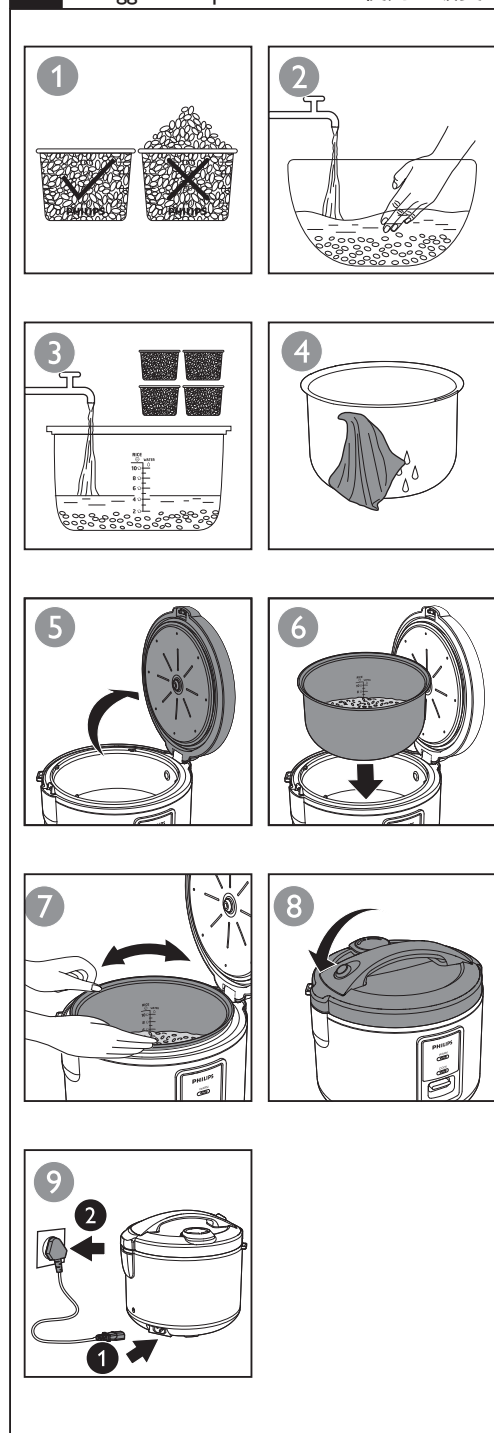
Do not throw away the appliance with normal household waste at the end of its life, but hand it in at an official collection point for recycling. By doing this, you can help to preserve the environment.



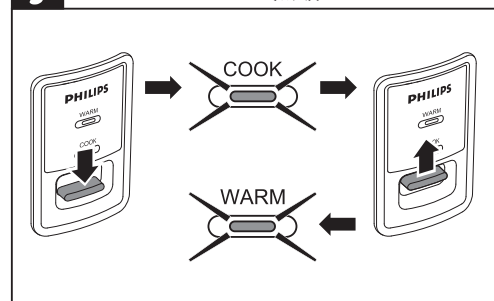
6 Guarantee and service

If you need service or information, or if you have a problem, visit the Philips website at www.philips.com or contact the Philips Customer Care Center in your country. You can find its phone number in the worldwide guarantee leaflet. If there is no Customer Care Center in your country, go to your local Philips dealer.

1 Using the rice cooker Menggunakan penanak nasi 使用电饭煲



Cooking rice Memasak nasi 煮饭



Steaming Mengukus 蒸食品

