



Philips Pure Essentials  
Collection  
Hand blender

**700 W**

metal bar XL chopper &  
accessories



**HR1372/90**

## More power for professional results

Powerful 700 Watt motor and double action blade

Fresh, quality food is something any home chef appreciates. But you don't have to be a culinary professional to produce it. With the new Philips hand blender, you can achieve professional results in your own kitchen – quickly and easily.

### **More power for professional results**

- Powerful 700 W motor
- Double action blade

### **The best result on every application**

- Multiple speeds and turbo button

### **Chops onion, herbs, hard cheese and more**

- XL chopper accessory for chopping large quantities
- Serrated blades for ice crushing in XL chopper
- Mini chopper accessory

### **Whips cream, mousse, egg whites and more**

- Whisk accessory

### **No splashing while you blend**

- Anti-splash blade guard

**PHILIPS**  
sense and simplicity

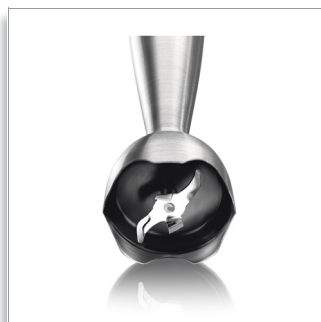
# Highlights

## Powerful 700 W motor



Powerful 700 W motor

## Double-action blade



Double action blade of the Philips hand blender cuts horizontally and vertically.

## Multiple speeds and turbo button



Multiple speeds and turbo button

## XL chopper accessory



XL chopper accessory for chopping large quantities

## Anti-splash blade guard



No splashes or mess while you blend.

# Specifications

## General specifications

- Turbo button
- Detachable shaft: With 2 buttons
- Speed setting: 5

## Technical specifications

- Power: 700 W
- Frequency: 50/60 Hz
- Cord length: 1.3 m
- Voltage: 220-240 V

## Design specifications

- Color(s): Black, metal and red
- Material housing: Stainless steel, rubber and PP
- Material jars: SAN
- Material blade: Stainless steel
- Material bar: Metal

## Accessories

- Serrated blades for XL chopper
- Whisk
- Beaker with lid: 1 l
- Chopper: Compact chopper, XL chopper



Issue date 2012-11-19

Version: 6.1.1

12 NC: 0000 000 00000

© 2012 Koninklijke Philips Electronics N.V.  
All Rights reserved.

Specifications are subject to change without notice.  
Trademarks are the property of Koninklijke Philips  
Electronics N.V. or their respective owners.

[www.philips.com](http://www.philips.com)