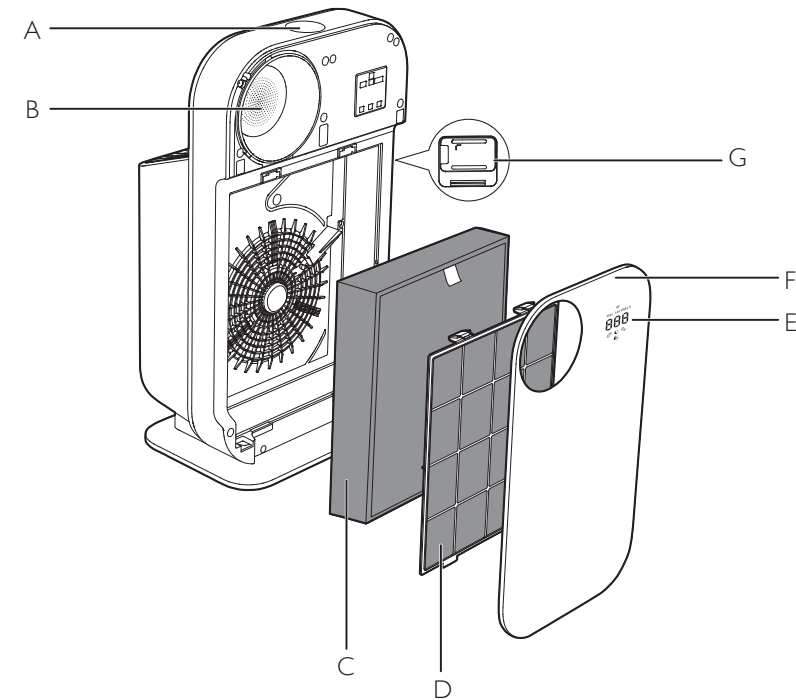




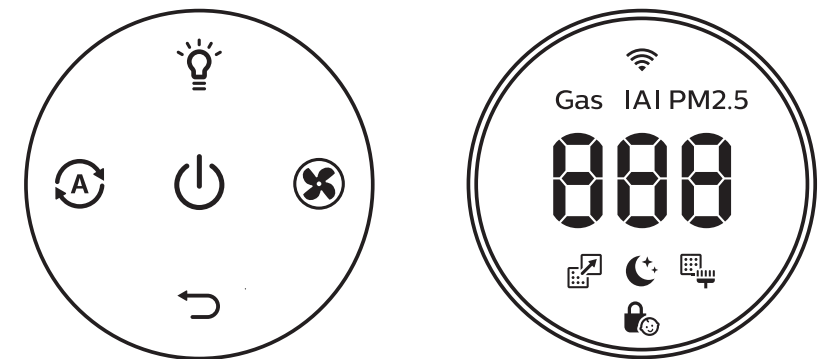
PHILIPS
AC4558



1



2

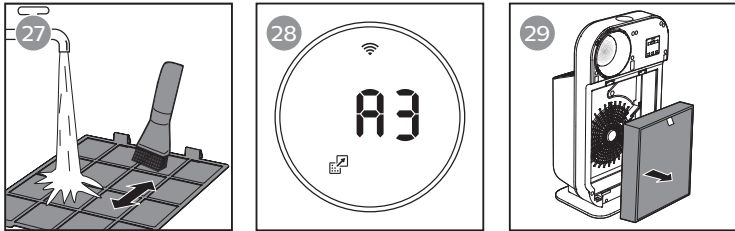
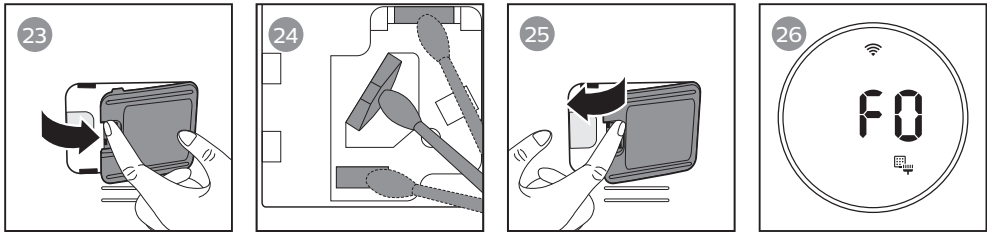
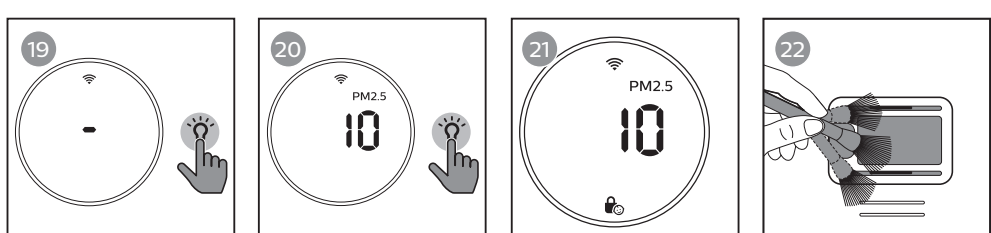
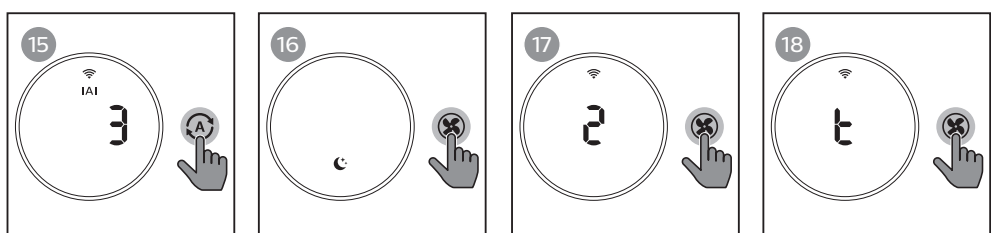
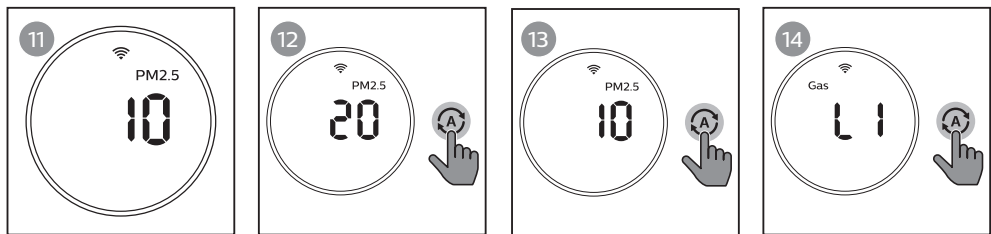
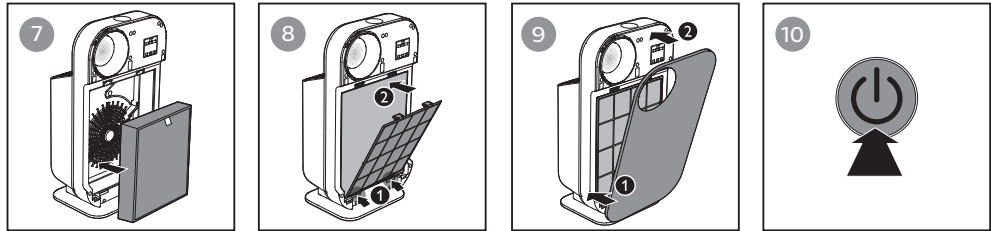
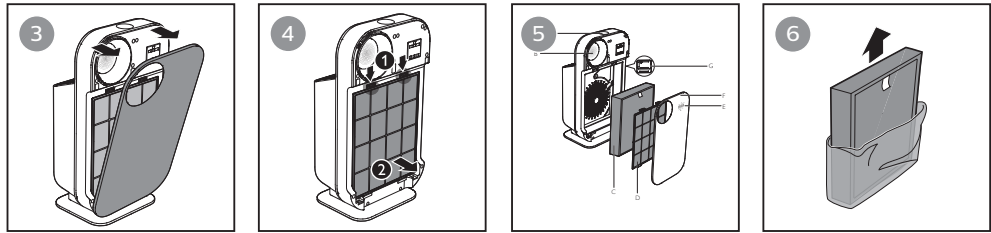


PHILIPS and the Philips Shield Emblem are registered trademarks of Koninklijke Philips N.V. and are used under license.
This product has been manufactured by and is sold under the responsibility of Versuni Holding B.V., and Versuni Holding B.V. is the warrantor in relation to this product.
2023 © Versuni Holding B.V.

3000.103.4278.1 (21/04/2023)

EN User manual 1

ZH-T 使用手冊 21



Contents

1 Important	2	7 Storage	15
Safety	2		
2 Your air purifier	5	8 Troubleshooting	16
Product Overview (fig. ①)	5		
Controls overview (fig. ②)	5	9 Warranty and support	19
		Order parts or accessories	19
3 Getting started	6	10 Notices	19
Installing the filter	6	Electromagnetic fields (EMF)	19
Wi-Fi connection	6	Recycling	19
		Notice	19
4 Using the appliance	8		
Understanding the air quality light	8		
Turning on and off	9		
Changing the Auto mode setting	10		
Changing the fan speed	10		
Using the light on/off function	11		
Setting the child lock	11		
5 Cleaning	12		
Cleaning schedule	12		
Cleaning the body of the appliance	12		
Cleaning the air quality sensor	12		
Cleaning the pre-filter	13		
6 Replacing the air purification filter	14		
Understanding the healthy air protect lock	14		
Replacing the filter	14		

1 Important

Safety

Read this user manual carefully before you use the appliance, and save it for future reference.

Danger

- Do not let water or any other liquid or flammable detergent enter the appliance to avoid electric shock and/or a fire hazard.
- Do not clean the appliance with water, any other liquid, or a (flammable) detergent to avoid electric shock and/or a fire hazard.
- Do not spray any flammable materials such as insecticides or fragrance around the appliance.

Warning

- Check if the voltage indicated on the appliance corresponds to the local power voltage before you connect the appliance.
- If the power cord is damaged, you must have

it replaced by Philips, a service center authorized by Philips, or similarly qualified persons in order to avoid a hazard.

- Do not use the appliance if the plug, the power cord, or the appliance itself is damaged.
- This appliance can be used by children aged from 8 years and above and persons with reduced physical, sensory or mental capabilities or lack of experience and knowledge if they have been given supervision or instruction concerning use of the appliance in a safe way and understand the hazards involved. Child shall not play with the appliance. Cleaning and maintenance shall not be made by children without supervision.
- Do not block the air inlet and outlet, e.g. by placing items on the air outlet or in front of the air inlet.
- Make sure that foreign objects do not fall into the appliance through the air outlet.

- Standard WiFi interface based on 802.11b/g/n at 2.4 GHz with a maximum output power of 31.62 mW EIRP.

Caution

- This appliance is not a substitute for proper ventilation, regular vacuum cleaning, or use of an extractor hood or fan while cooking.
- If the power socket used to power the appliance has poor connections, the plug of the appliance becomes hot. Make sure that you plug the appliance into a properly connected power socket.
- Always place and use the appliance on a dry, stable, level, and horizontal surface.
- Leave at least 20cm free space behind and on both sides of the appliance and leave at least 30cm free space above the appliance.
- Do not place anything on top of the appliance.
- Do not sit or stand on the appliance. Sitting or

standing on the appliance may lead to potential injury.

- Do not place the appliance directly below an air conditioner to prevent condensation from dripping onto the appliance.
- Make sure all filters are properly installed before you switch on the appliance.
- Only use the original Philips filters specially intended for this appliance. Do not use any other filters.
- Combustion of the filter may cause irreversible human hazard and/or jeopardize other lives. Do not use the filter as fuel or for similar purpose.
- Avoid knocking against the appliance (the air inlet and outlet in particular) with hard objects.
- Always lift or move the appliance by the handle on back side of the appliance.

- Do not insert your fingers or objects into the air outlet or the air inlet to prevent physical injury or malfunctioning of the appliance.
- Do not use this appliance when you have used indoor smoke-type insect repellents or in places with oily residues, burning incense, or chemical fumes.
- Do not use the appliance near gas appliances, heating devices or fireplaces.
- Always unplug the appliance after use and before cleaning, or carrying out other maintenance or replacing the filters.
- Do not use the appliance in a room with major temperature changes, as this may cause condensation inside the appliance.
- To prevent interference, place the appliance at least 2 meters away from electrical appliances that use airborne radio waves such as TVs, radios, and radio-controlled clocks.
- The appliance is only intended for household use under normal operating conditions.
- Do not use the appliance in wet surroundings or in surroundings with high ambient temperatures, such as the bathroom, toilet, or kitchen.
- The appliance does not remove carbon monoxide (CO) or radon (Rn). It cannot be used as a safety device in case of accidents with combustion processes and hazardous chemicals.
- If you need to move the appliance, disconnect the appliance from the power supply first.
- Do not move the appliance by pulling its power cord.
- Always cleanse your hands after changing the filters.

2 Your air purifier

Congratulations on your purchase, and welcome to Philips!

To fully benefit from the support that Philips offers, register your product at www.philips.com/welcome.

This appliance works with an air filtration system. Read this user manual carefully before you use the appliance, and save it for future reference.






Product Overview (fig. ①)

- A Display panel
- B Air quality light
- C NanoProtect filter Pro S3* (FY4152)
- D Pre-filter
- E Front cover
- F Air quality sensor
- G Control buttons


*Hereinafter referred to as "air purification filter".

Controls overview (fig. ②)

Control buttons

-  Power on/off button
-  Light on/off button
-  Auto mode button
-  Fan speed button
-  Reset button

Display panel:

-  Wi-Fi indicator

Gas Gas display

PM2.5 PM2.5 display

IAI Indoor Allergen Index

 Filter replacement alert

 Sleep mode

 Pre-filter cleaning alert

 Child lock indicator**

You can enable the child lock function through the **Air+ App.

3 Getting started

Installing the filter

Remove all packaging of the filter before using the appliance. Unpack them and place them into the appliance described as follows:



Note

- Make sure that you place the air purification filter in the appliance first and then the pre-filter.
- Make sure that the side with the tag is pointing towards you when installing the filter.

- 1 Pull the top part of the front cover to remove it from the appliance (fig. ③).
- 2 Press the two clips down and pull the pre-filter towards you (fig. ④).
- 3 Remove the filter (fig. ⑤).
- 4 Remove all packaging materials of the air purification filter (fig. ⑥).
- 5 Put the unpacked air purification filter into the appliance (fig. ⑦).
- 6 Put the pre-filter back into the appliance (fig. ⑧).



Note

- Make sure that all hooks of the pre-filter is properly attached to the purifier.


- 7 To reattach the front cover, mount the cover onto the bottom of the appliance first (1). Then, gently push the top of the cover against the body of the appliance (2) (fig. ⑨).


Wi-Fi connection

Setting up the Wi-Fi connection for the first time

- 1 Download and install the Philips "Air+" app from the **App Store** or **Google Play**.



- 2 Put the plug of the air purifier in the power socket and touch  to turn on the air purifier.
↳ The Wi-Fi indicator  blinks orange for the first time.
- 3 Make sure that your smartphone or tablet is successfully connected to your Wi-Fi network.
- 4 Launch the "Air+" app and click on "**Connect a New Device**" or press the "+" button on the top of the screen. Follow the onscreen instructions to connect the air purifier to your network.

- 5 After the successful pairing and connection, the Wi-Fi indicator  will light up white. If pairing is not successful, consult the troubleshooting section, or the help section in the "Air+" App for extensive and up-to-date troubleshooting tips.





Note

- This instruction is only valid when the air purifier is being set up for the first time. If the network has changed or the setup needs to be performed again, consult section "Reset the Wi-Fi connection" on page 7.
- If you want to connect more than one air purifier to your smartphone or tablet, you have to do this one by one. Complete the set up of one air purifier before you turn on the other air purifier.
- Make sure that the distance between your smartphone or tablet and the air purifier is less than 10 m without any obstructions.

Reset the Wi-Fi connection

Note

- This applies when the default network to which your purifier is connected has changed.
- Reset the Wi-Fi connection when your default network has changed.

- 1 Put the plug of the air purifier in the power socket and touch  to turn on the air purifier.
- 2 Touch  and  simultaneously for 3 seconds until you hear a beep.
 - ↳ The air purifier goes to pairing mode.
 - ↳ The Wi-Fi indicator  blinks orange.
- 3 Follow the steps 4-5 in "**Setting up the Wi-Fi connection for the first time**" section.

4 Using the appliance

Understanding the air quality light

Air quality light color	Air quality level
Blue	Good
Blue-purple	Fair
Purple-red	Poor
Red	Very poor

The air quality light automatically goes on when the air purifier is switched on, and lights up all colors in sequence. After approximately 30 seconds, the air quality sensors select the color that corresponds to the surrounding air quality of airborne particles.

The color of the air quality light is determined by the highest level among PM2.5, Gas and IAI readings.

PM2.5

AeraSense sensing technology accurately detects and quickly responds to even the slightest particle change in the air. It provides you with reassurance with real-time PM2.5 feedback.

Most of the indoor air pollutants fall under PM2.5 – which refers to airborne particle pollutants smaller than 2.5 micrometers. Common indoor sources of fine particles are tobacco smoke, cooking, burning candles. Some airborne bacteria and the smallest mold spores, pet allergen and dust mite allergen particles also fall under PM2.5.

PM2.5 level	Air quality light color
≤12	Blue
13-35	Blue-purple
36-55	Purple-red
>55	Red

GAS

With an advanced gas sensor, a display ranging from L1 to L4 shows the level change of potential harmful gases (incl. VOC, odor, etc.) detected. L1 indicates best air quality.

Gas level	Air quality light color
L1	Blue
L2	Blue-purple
L3	Purple-red
L4	Red

IAI

The professional-grade **AeraSense** sensor detects the level of indoor air allergen and with numerical feedback from 1 to 12 the potential risk level of indoor air allergens can be displayed. 1 indicates best air quality.

IAI level	Air quality light color
1-3	Blue
4-6	Blue-purple
7-9	Purple-red
10-12	Red


Turning on and off




Note

- Always place the air purifier on a stable, horizontal, and level surface with the front of the unit facing away from walls or furniture.
- For optimum purification performance, close doors and windows.
- Keep curtains away from the air inlet or air outlet.
- Do not block the inlet or air outlet with clothing.

- 1 Put the plug of the air purifier in the wall outlet.
 - ↳ The air purifier beeps.
 - ↳ All lights go on once and then go out again.

- 2 Touch the  button to switch on the appliance (fig. ⑩).

- ↳ The air purifier operates under the general mode by default.
- ↳ When the air purifier is warming up, "----" displays on the screen.
- ↳ After 30 seconds, the air purifier shows the highest level among PM2.5/Gas/IAI on the screen. The air quality sensor automatically selects the appropriate air quality light color (fig. ⑪).

- 3 Touch and hold the  button for 3 seconds to switch off the air purifier.



Note


- If the air purifier stays connected to the electrical outlet after turning OFF, the air purifier will operate under the previous settings when turned ON again.

Changing the Auto mode setting

You can choose 4 auto modes: the general mode, the Pollution mode, the Gas mode or the Allergen mode.


Auto general mode

The Auto general mode is designed to fast respond to even the slightest change in the air that automatically adjust fan speed to ensure optimal performance.

- Touch the Auto mode button  to select Auto general mode (fig. 12).
 - ↳ Auto (A) displays on the screen for 3 seconds.
 - ↳ Then the screen shows the highest level among PM2.5/Gas/IAI.


Auto pollution mode

The specially designed auto pollution mode responds to real time particle level and effectively remove airborne pollutants such as PM2.5 (fig. 13).

- Touch the Auto mode button  to select the Auto pollution mode.
 - ↳ Then the PM2.5 level displays on the screen.

Auto Gas mode


The specially designed Auto Gas mode is designed to quickly remove indoor harmful gases such as formaldehyde, toluene, and maintain it at safe level (fig. 14).

- Touch the Auto mode button  to select the Auto Gas mode.

- ↳ The Gas level displays on the screen.

Auto allergen mode

The extra-sensitive Auto allergen mode is designed to react to even a small change in allergen levels in the surrounding air (fig. 15).

- Touch the Auto mode button  to select the Auto allergen mode.
 - ↳ The IAI level displays on the screen.




Changing the fan speed

There are several fan speeds available.


When using the manual fan speed settings, the purifier will still monitor the air quality, but it will not automatically adjust the fan speed if it detects changes in the air quality.

Sleep mode (C)

In sleep mode, the air purifier operates quietly at a very low speed.

- Touch the fan speed button  to select the sleep mode (fig. 16).
 - ↳ The "S L" displays on the screen for 3 seconds and then disappears.
 - ↳ The sleep mode indicator  goes on.
 - ↳ After 30 seconds, all the icons are off, only the sleep mode indicator  goes on.

Manual

- Touch the fan speed button  repeatedly to select the fan speed you need (speed 1 or speed 2) (fig. 17):
 - ↳ After 3 seconds, the display shows the previous mode.


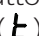
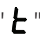


Tip

- If the air quality light lights up blue, it indicates that the air quality is good, and you can select a lower fan speed. On the other hand, if the air quality light lights up red-purple or red, it indicates that the air quality is unhealthy, and you can select a higher fan speed to purify the air more quickly.



Turbo(t)

In Turbo mode, the air purifier operates on the highest speed.


- Touch the fan speed button  to select the Turbo mode ( (fig. 18).
 - ↳ The "" displays on the screen.
 - ↳ After 3 seconds, the display shows the previous mode.

Using the light on/off function

With the light on/off button, you can switch on or off the air quality light, the display screen and the function indicator if desired.

- 1 Touch the light on/off button  once, the air quality light and all buttons will go off and the screen be dimmed (fig. 19).
- 2 Touch the light on/off button  again, all lights will be on again (fig. 20).

Setting the child lock


You can use this function through the Air+ App. When the function is enabled, the child lock indicator  displays on the screen, all the other buttons are not responsive. (fig. 21).

5 Cleaning

Note

- Always unplug the appliance before you clean it.
- Never immerse the appliance in water or any other liquid.
- Never use abrasive, aggressive, or flammable cleaning agents such as bleach or alcohol to clean any part of the appliance.
- Only the pre-filter is washable. The air purifier filter is not washable nor vacuum cleanable.

Cleaning schedule

Frequency	Cleaning method
When necessary	Wipe the surface of the appliance with a soft dry cloth
	Clean the air outlet cover
Every two months	Clean the air quality sensor with a dry cotton swab
When the pre-filter cleaning indicator  lights up and F0 displays on the screen	Clean the pre-filter

Cleaning the body of the appliance

Regularly clean the inside and outside of the appliance to prevent dusts from collecting.

- 1 Wipe away dust with a soft dry cloth from the body of the appliance.

Cleaning the air quality sensor

Clean the air quality sensor every two months for optimal functioning of the appliance. Clean it more frequently if you use the appliance in a dusty environment.

Note

- If the air purifier is used in a dusty environment, it may need to be cleaned more often.
- If the humidity level in the room is very high, condensation may develop on the air quality sensor and the air quality light may indicate a more poor air quality even though the air quality is actually good. If this occurs, clean the air quality sensor or use the air purifier on a manual speed setting.

- 1 Clean the inlet and outlet of the air quality sensor with a soft brush (fig. 22).

- 2 Remove the air quality sensor cover (fig. ②③).
- 3 Clean the air quality sensor, the dust inlet and the dust outlet with a damp cotton swab (fig. ②④).
- 4 Dry all parts thoroughly with a dry cotton swab.
- 5 Reattach the air quality sensor cover (fig. ②⑤).



Cleaning the pre-filter

Clean the pre-filter when  lights up and F0 is displayed on the screen (fig. ②⑥).

- 1 Switch off the air purifier and unplug from the wall outlet.
- 2 Pull the top part of front cover to remove it from the appliance (fig. ③).
- 3 Press the two clips down and pull the pre-filter towards you (fig. ④).
- 4 If the pre-filter is very dirty, use a soft brush to brush away the dust. Then wash the pre-filter under running tap water (fig. ②⑦).
- 5 Allow the pre-filter to air dry thoroughly before placing back in the air purifier.
- 6 Put the pre-filter back into the appliance (fig. ③⑧).


Note

- Make sure that the pre-filters are completely dry before you put them back in the appliance. If they are still wet, bacteria may multiply in them and shorten the lifetime of the pre-filters.

- 7 To reattach the front cover, mount the cover onto the bottom of the appliance first (1). Then, gently push the top of the cover against the body of the appliance (2) (fig. ③⑨).
- 8 Put the plug of the air purifier in the wall outlet.
- 9 Touch the  button to switch on the appliance.
- 10 Touch and hold the reset button  for 3 seconds to reset the pre-filter cleaning time.
- 11 Wash your hands thoroughly after installing filters.

6 Replacing the air purification filter

Understanding the healthy air protect lock


This air purifier is equipped with a filter replacement indicator to make sure that the air purification filter is in optimal condition when the air purifier is operating. When the filters need to be replaced, the filter code displays on the screen and the filter replacement alert () lights up red. If the filters are not replaced in time, the air purifier will stop operating and automatically lock to protect the air quality in the room. Replace the filters as soon as possible according to the filter code.


Replacing the filter

Note

- The air purification filter is not washable or reusable.
- Always turn off the air purifier and unplug from the electrical outlet before replacing the filters.
- Do not clean the filter with a vacuum.
- If the pre-filter is damaged, worn or broken, do not use. Visit www.philips.com/support or contact the Consumer Care Center in your country.



Filter alert chart (fig. )

Filter alert light status	Action
A3 displays on the screen and the filter replacement alert  goes on.	Replace the NanoProtect filter Pro S3 (FY4152)

- 1 Turn off the air purifier and unplug from the power socket.
- 2 Take out the used air filter according to the filter alert light status displayed on the screen. Discard used filter (fig. ).

Note

- Do not touch the pleated filter surface, or smell the filter as it has collected pollutants from the air.

- 3 Remove all packaging material of the new filters (fig. ⑥).
- 4 Put the unpacked air purification filters back into the appliance (fig. ⑦).
- 5 Put the plug of the air purifier in the power socket.
- 6 Touch the  button to switch on the appliance.
- 7 Touch and hold the reset button  for 3 seconds to reset the filter lifetime counter.



Note

- Wash your hands after changing filters.


7 Storage

- 1 Turn off the air purifier and unplug from the wall outlet.
- 2 Clean the air purifier, air quality sensor and pre-filter (see chapter 'Cleaning').
- 3 Let all parts air dry thoroughly before storing.
- 4 Wrap the filters and pre-filter separately in air tight plastic bags.
- 5 Store the air purifier, filters and pre-filters in a cool, dry location.
- 6 Always thoroughly wash hands after handling filters.

8 Troubleshooting

This chapter summarizes the most common problems you could encounter with the appliance. If you are unable to solve the problem with the information below, contact the Consumer Care Center in your country.

Problem	Possible solution
The appliance does not work even though it is plugged in.	<ul style="list-style-type: none">• Check if the top cover is properly installed.• The filter replacement light has been on continuously but you have not replaced the corresponding filter. As a result, the appliance is now locked. In this case, replace the filter and reset the filter lifetime counter.
The airflow that comes out of the air outlet is significantly weaker than before.	<ul style="list-style-type: none">• The pre-filter is dirty. Clean the pre-filter (see the chapter "Cleaning").
The air quality does not improve, even though the appliance has been operating for a long time.	<ul style="list-style-type: none">• Check if the packing material is removed from the filters.• One of the filters has not been placed in the appliance. Make sure that all filters are properly installed in the following order, starting with the innermost filter: 1) NanoProtect filter Pro S3 (FY4152); 2) pre-filter.• The air quality sensor is wet. The humidity level in your room is high and causes condensation. Make sure that the air quality sensor is clean and dry (see the chapter "Cleaning").
The color of the air quality light always stays the same.	<ul style="list-style-type: none">• The air quality sensor is dirty. Clean the air quality sensor (see the chapter "Cleaning").

Problem	Possible solution
The appliance produces a strange smell.	<ul style="list-style-type: none">• The first few times you use the appliance, it may produce a plastic smell. This is normal. However, if the appliance produces a burnt smell even if removing filters, contact your Philips dealer or an authorized Philips service center. The filter may produce smell after being used for a while because of the absorption of indoor gases. It's recommended that you reactivate the filter by putting it in direct sunlight for repeated use. If odor still exists, replace the filter.
The appliance is extra loud.	<ul style="list-style-type: none">• If the appliance is too loud, you can change the fan speed to a lower fan speed level. When using the appliance in a bedroom at night, choose the silent speed.
The appliance still indicates that I need to replace a filter, but I already did.	<ul style="list-style-type: none">• Perhaps you did not reset the filter lifetime counter. Switch on the appliance. Then touch and hold the reset button () for 3 seconds.
Error code "E1" displays on the screen.	<ul style="list-style-type: none">• The motor has malfunctions. Contact the Consumer Care Center in your country.
Error codes "E2", "E3", "E4" or "E5" displays on the screen.	<ul style="list-style-type: none">• The sensor has malfunctions. Contact the Consumer Care Center in your country.

Problem	Possible solution
The Wi-Fi setup is not successful.	<ul style="list-style-type: none"> • If the router your purifier is connected to is dual – band and currently it is not connecting to a 2.4GHz network, please switch to another band of the same router (2.4GHz) and try to pair your purifier again. 5GHz networks are not supported. • Web authentication networks are not supported. • Check if the purifier is within range of the Wi-Fi router. You can try to locate the air purifier closer to the Wi-Fi router. • Check if the network name is correct. The network name is case-sensitive. • Check if the Wi-Fi password is correct. The password is case-sensitive. • Retry the setup with the instructions in section "Reset the Wi-Fi connection". • The Wi-Fi connectivity can be interrupted by electromagnetic or other interferences. Keep the appliance away from other electronic devices that may cause interferences. • Check if the mobile device is in airplane mode. Make sure to have the airplane mode deactivated when connecting to the Wi-Fi network. • Consult the help section in the App for extensive and up-to-date troubleshooting tips.

9 Warranty and support

Versuni offers a two-year warranty after purchase on this product. This warranty is not valid if a defect is due to incorrect use or poor maintenance. Our warranty does not affect your rights under law as a consumer. For more information or for invoking the warranty, please visit our website www.philips.com/support.

Order parts or accessories

If you have to replace a part or want to purchase an additional part, go to your Philips dealer or visit www.philips.com/support.

If you have problems obtaining the parts, please contact the Philips Consumer Care Center in your country.

10 Notices

Electromagnetic fields (EMF)

This appliance complies with the applicable standards and regulations regarding exposure to electromagnetic fields.

Recycling

Do not throw away the product with the normal household waste at the end of its life, but hand it in at an official collection point for recycling. By doing this, you help to preserve the environment.

Follow your country's rules for the separate collection of electrical and electronic products. Correct disposal helps prevent negative consequences for the environment and human health.

Notice

App Store is a service mark of Apple Inc.

Google Play is a trademark of Google Inc.

目錄

1 重要事項	21
安全	21
2 您的空氣清新機	23
產品概要 (圖 ①)	23
控制鍵概覽 (圖 ②)	23
3 使用入門	24
安裝濾網	24
Wi-Fi 連接	24
4 使用本產品	25
瞭解空氣質素燈	25
開關	26
更改自動模式設定	27
改變風速	27
使用開燈/關燈功能	28
設定童鎖	28
5 清潔	28
清潔時間表	28
清潔本產品機身	28
清潔空氣質素感應器	29
清潔前層濾網	29
6 更換空氣清新機濾網	30
了解清新空氣保護鎖	30
更換濾網	30
7 存放	31
8 疑難排解	32

9 保固與支援	34
訂購零件或配件	34
10 注意	34
電磁場 (EMF)	34
回收	34
注意	34

1 重要事項

安全

使用本產品前請先閱讀本用戶手冊，並保管以作將來參考。

危險事項

- 請勿讓水或任何液體或易燃清潔劑進入此產品，以避免觸電和/或火災的危險。
- 請勿用水或任何液體或（易燃）清潔劑清潔此產品，以避免觸電和/或火災的危險。
- 請勿在本產品周圍噴射殺蟲劑或芳香劑等易燃物品。

警告

- 在連接本產品前，請檢查產品註明的指示電壓與當地電源電壓是否對應。
- 如果電源線損壞，為避免危險，必須由 Philips、Philips 授權的維修中心或類似的合資格人士來更換。
- 若插頭、電源線或產品本身已受損，請勿使用。
- 此產品可供八歲及以上兒童，體能、感官或心智能力低下人士，或缺乏知識及經驗人士使用，如該等人士已就使用本產品給予監督或有關安全使用本產品的指導及明白本產品的使用所涉及的危險。請勿讓孩童將本產品

當成玩具。兒童不應於沒有監督情況下對產品進行清潔及維護。

- 請勿阻塞進氣口和排氣口，例如在排氣口上面或進氣口前面放置物件。
- 確保異物不會通過排氣口掉入裝置內部。
- WiFi 介面採用標準 802.11b/g/n 制式、2.4 GHz 頻段，最大輸出功率為 31.62 mW EIRP。

注意

- 本產品並不是適當通風設備、正規吸塵器或煮食時使用的抽油煙機或風扇的替代品。
- 若為本產品提供電力的電源插座沒有妥善連接，本產品的插頭便會發熱。請確保您已妥善連接電源插座。
- 在乾燥、穩定、平滑和水平表面上使用產品。
- 在本產品的後面和兩側至少留出 20 厘米的自由空間，本產品上方至少留出 30 厘米空間。
- 請勿在裝置上放置任何物品。
- 請勿坐或站立在裝置上。坐在或站立在裝置上可能會導致損傷。

- 請勿在冷氣機正下方放置產品，以避免冷凝滴水到產品上。
- 在開啟產品前，確保已正確安裝所有濾網。
- 僅使用本產品專用的原裝 Philips 濾網。請勿使用任何其他濾網。
- 燃燒濾網可能造成對健康無可挽回的危害及/或危及他人生命。不要使用濾網作為燃料或類似用途。
- 避免以硬物碰撞產品（尤其是產品的進氣口或排氣口）。
- 請使用裝置背面的手柄來提起或移動裝置。
- 請勿將您的手指或其他物件放入進氣口或排氣口，以免造成身體傷害或產品故障。
- 若您使用室內煙型驅蚊劑，或該地方有油跡、香火或化學煙霧，請勿使用本產品。
- 請勿在煤氣用具、暖氣設備或壁爐旁邊使用本產品。
- 使用後，清潔或進行其他保養或更換濾網前，務必拔出本產品的插頭。
- 請勿在溫度變化較大的房間內使用本產品，這可能導致產品內產生冷凝物。
- 為了防止干擾，放置產品的地方應與使用空中無線電波電器（如電視、收音機及無線電控制的時鐘）距離兩米以外。
- 本產品只適合一般操作環境下的家居使用。
- 請勿在洗手間或廚房等濕潤環境或高溫環境使用本產品。
- 本產品不會去除一氧化碳 (CO) 或氫 (Rn)。本產品不能在含有燃燒過程和危險化學品的意外中充當安全裝置。
- 如果您需要移動本產品，請先拔出其電源供應器。
- 不要拉扯電源線來移動裝置。
- 每次更換濾網後都請清潔雙手。

2 您的空氣清新機

感謝您購買 Philips 產品，歡迎來到 Philips 世界！

請前往以下網址註冊您的產品，以獲得 Philips 的完整支援：

www.philips.com/welcome。

本產品適用於空氣過濾系統。使用本產品前請先閱讀本用戶手冊，並保管以作將來參考。

產品概要（圖 ①）

A 顯示面板

B 空氣質素燈

C NanoProtect 濾網 Pro S3*
(FY4152)

D 前層濾網

E 前蓋


F 空氣質素感應器

G 控制按鈕


*以下簡稱「空氣清新機濾網」。

控制鍵概覽（圖 ②）


控制按鈕

 電源開 / 關按鈕

 開燈/關燈按鈕

 自動模式按鈕

 風速按鈕

 重設按鈕

顯示面板：

 Wi-Fi 指示燈

Gas 氣體顯示

PM2.5 PM2.5 顯示

IAI 室內過敏原指數

 濾網更換警示

 睡眠模式

 前層濾網清潔警報

 童鎖指示燈**

**您可以在「Air+」應用程式使用童鎖功能。

3 使用入門

安裝濾網

使用裝置前，請移除濾網的所有包裝。從包裝中取出，並將濾網放入裝置中，如下所示：

≡ 備註

- 確保先將空氣清新機濾網放入產品中，然後再放入前層濾網。
- 安裝濾網時，請確保貼有標籤的一面面向自己。

- 1 拉出前蓋的頂部，將濾網從裝置中取出（圖 ③）。
- 2 向下按兩個夾子，然後將前層濾網拉向自己（圖 ④）。
- 3 移除濾網（圖 ⑤）。
- 4 移除空氣清新機濾網的所有包裝內物件（圖 ⑥）。
- 5 將拆除包裝的空氣清新機濾網放入裝置中（圖 ⑦）。
- 6 將前層濾網放回本產品內（圖 ⑧）。

≡ 備註

- 請確保前層濾網的所有掛勾均穩妥地掛在本產品上。




- 7 要重新安裝前蓋，先將護蓋固定於本產品底部 (1)。然後將護蓋頂部輕輕地推向本產品的機身 (2)（圖 ⑨）。

Wi-Fi 連接

首次設定 Wi-Fi 連線

- 1 前往 App Store 或 Google Play 下載並安裝 Philips「Air+」應用程式。



- 2 將空氣清新機的插頭插入電源插座，輕按  以啟動空氣清新機。
↳ Wi-Fi 指示燈  於首次使用時會亮橙燈。
- 3 請確保您的智能手機或平板電腦已成功連線至 Wi-Fi 網絡。
- 4 啟動「Air+」應用程式。輕觸螢幕上方的“連接新裝置”或者“+”按鈕，按照畫面上的指示，將空氣清新機連接至您的網絡。
- 5 成功配對並連接後，Wi-Fi 指示燈  即會亮白燈。如未能成功配對，請參閱疑難排解部分，或「Air+」應用程式中的說明部分，以獲取最新的疑難排解詳細貼士。


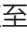
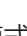

備註

- 本指示僅適用於首次設定空氣清新機。如網絡有變或需要重新設定，請參閱第 25 頁的「重設 Wi-Fi 連線」部分。
- 如您要將多於一部空氣清新機連接至智能電話或平板電腦，您必須逐一連接。啟動另一部空氣清新機前，請完成設定當前的空氣清新機。
- 請確保流動智能電話或平板裝置與空氣清新機的距離在 10 米以內，而且沒有任何障礙物。

重設 Wi-Fi 連線

備註

- 本提示只在空氣清新機已連接的預設網絡改變時適用。
- 當預設網絡有變時，請重設 Wi-Fi 連線

- 1 將空氣清新機的插頭插入電源插座，輕按  以啟動空氣清新機。
- 2 同時按下  和  3 秒，直至聽到「嗶」聲為止。
 - ↳ 空氣清新機進入配對模式。
 - ↳ Wi-Fi 指示燈  閃爍橙色燈光。
- 3 請按照「首次設定 Wi-Fi 連線」部分的步驟 4-5 操作。

4 使用本產品

瞭解空氣質素燈

空氣質素指示燈的顏色	空氣質素水平
藍色	良好
藍色-紫色	一般
紫色-紅色	差
紅色	非常差

開啟空氣清新機時，空氣質素燈將自動亮起，並順序顯示所有顏色。約 30 秒後，空氣質素感應器會根據周遭空中粒子的空氣質素，選擇相應的顏色。

空氣質素燈的顏色由 PM2.5、氣體和 IAQ 讀數的最高水平決定。

PM2.5

AeraSense 感應技術能夠準確地偵測並快速回應，即使對空氣中最微小的粒子變化也不例外。確保可為您提供即時的 PM2.5 資訊的保證。

大多數室內空氣污染物屬於 PM2.5，即是指小於 2.5 微米的空中粒子污染物。常見的室內微細粒子來自煙草煙霧、烹飪、燃燒蠟燭。一些空中傳播的細菌和最小的霉菌孢子、寵物致敏原和塵蟎致敏原粒子亦屬於 PM2.5。

PM2.5 水平	空氣質素指示燈的顏色
≤12	藍色
13-35	藍色-紫色
36-55	紫色-紅色
>55	紅色

氣體

裝置設有先進的氣體感應器，從螢幕上 L1 到 L4 的數值顯示潛在有害氣體的水平變化（包括 VOC、臭氣等）。L1 代表最佳的空氣質素。

氣體水平	空氣質素指示燈的顏色
L1	藍色
L2	藍色-紫色
L3	紫色-紅色
L4	紅色

IAI



專業級的 AeraSense 感應器可偵測室內空氣過敏原的水平，透過 1 至 12 的數值反應顯示室內空氣過敏原的潛在危險等級。1 代表最佳的空氣質素。

IAI 水平	空氣質素指示燈的顏色
1-3	藍色
4-6	藍色-紫色
7-9	紫色-紅色
10-12	紅色

開關

備註

- 空氣清新機必須放置在穩定、平坦及水平的表面上，淨化器前方不得面向牆壁或家具。
- 請關閉門窗，以獲得最佳的空氣淨化效果。
- 窗簾必須遠離進氣口或排氣口。
- 不要用衣服遮擋進氣口或排氣口。

- 1 將空氣清新機的插頭插入牆身插座。
 - ↳ 空氣清新機發出嗶聲。
 - ↳ 所有燈會亮起一次，然後再熄滅。
- 2 觸控  按鈕 開啟裝置（圖 10）。
 - ↳ 空氣清新機以預設的一般模式運行。
 - ↳ 空氣清新機正準備運作時，「---」便會在螢幕上顯示。
 - ↳ 30 秒後，空氣清新機螢幕將顯示 PM2.5/氣體/IAI 的最高水平。空氣質素感應器可自動選擇相應的空氣質素指示燈顏色（圖 11）。
- 3 輕按住  按鈕 3 秒以關閉空氣清新機。

備註



- 如空氣清新機在「關閉」後繼續連接至電源插座，空氣清新機在再次「啟動」時，將按之前的設定操作。

更改自動模式設定

您可以選擇 4 種自動模式：
一般模式、除污模式、氣體模式或
防敏模式。


自動一般模式

即使是最輕微的空氣變化，自動一般模式都可快速回應，並可自動調節風扇速度，以確保最佳表現。

- 點按自動模式按鈕 ，選擇自動一般模式。（圖 12）。
 - ↳ 將會自動（）顯示在螢幕上 3 秒。
 - ↳ 然後螢幕會顯示最高的 PM2.5/氣體/IAI 水平。


自動除污模式

專門設計的自動除污模式可實時回應粒子水平，有效去除空中污染物，如 PM2.5（圖 13）。

- 按下自動模式按鈕 ，即可選擇自動除污模式。
 - ↳ 然後螢幕顯示 PM2.5 水平。


自動氣體模式

專門設計的自動氣體模式旨在快速去除室內有害氣體，如甲醛、甲苯，並將空氣保持在安全水平（圖 14）。

- 按下自動模式按鈕 ，即可選擇自動氣體模式。
 - ↳ 螢幕顯示氣體水平。

自動防敏模式

設有特別靈敏的自動防敏模式，採用特別設計，可對周圍空氣中尤其輕微的致敏原水平變化作出反應（圖 15）。

- 按下自動模式按鈕 ，即可選擇自動防敏模式。
 - ↳ 螢幕顯示 IAI 水平。




改變風速

備有多段風速。


當使用手動風速設定時，空氣清新機仍然會監控空氣質素，但如果偵測到空氣質素有變化，也不會自動調節風速。

睡眠模式 (☾)

在睡眠模式下，空氣清新機以非常低的速度安靜地運作。

- 按下風速按鈕  以選擇睡眠模式（圖 16）。
 - ↳ 「SL」將會在螢幕顯示 3 秒，然後熄滅。
 - ↳ 睡眠模式指示燈  將會亮起。
 - ↳ 30 秒後，所有圖示會熄滅，只有睡眠模式指示燈  亮起。

手動


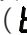
- 重複按下風速按鈕  以選擇您所需的風速（速度 1 或速度 2）（圖 17）：
 - ↳ 3 秒後，會顯示上一個模式。

* 貼士

- 如果空氣質素燈亮起藍燈，表示空氣質素為良好，您可選擇較低的風速。如果空氣質素燈亮起紫紅燈或紅燈，表示空氣質素為不良，您可選擇較高的風速，以更快的速度淨化空氣。



特強模式 (t)

在特強模式中，空氣清新機以最高速度運作。


- 按下風速按鈕  以選擇特強模式（）（圖 18）。
 - ↳ 「t」將顯示在螢幕上。
 - ↳ 3 秒後，會顯示上一個模式。

使用開燈/關燈功能

透過開燈/關燈按鈕，您可以開啟或關閉空氣質素燈、顯示畫面及功能指示燈。

- 1 按下開燈/關燈按鈕  一次，空氣質素燈和所有按鈕將熄滅，螢幕變暗（圖 19）。
- 2 再次按下開燈/關燈按鈕 ，所有燈將會再次亮起（圖 20）。

設定童鎖

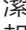
您可以在「Air+」應用程式使用此功能。啟用功能後，螢幕會顯示童鎖指示燈， 所有其他按鈕都沒有反應。（圖 21）。

5 清潔

備註

- 必需在清潔前拔出產品插頭。
- 切勿將本產品侵入水中或任何其他液體中。
- 請勿使用磨蝕性、侵略性或易燃清潔劑（如漂白劑或酒精）清洗本產品的任何一部分。
- 只有前層濾網是可清洗的。請勿清洗空氣清新機濾網，也切勿使用吸塵機清潔。

清潔時間表

頻率	清潔方法
必要時	用柔軟的乾布抹乾淨本產品表面
	清潔排氣口護蓋
每兩個月	使用乾棉花棒清潔空氣質素感應器
當前層濾網清潔指示燈  亮起並於螢幕顯示 F0 時	清潔前層濾網

清潔本產品機身

請定時清潔本產品的內外，以避免積聚塵埃。

- 1 使用柔軟的乾布擦掉本體內的塵埃。

清潔空氣質素感應器


每 2 個月清潔一次空氣質素感應器，讓本產品發揮出最佳功能。若在多塵的地方使用本產品，請更頻密清潔。

≡ 備註

- 如在多塵的環境內使用空氣清新機，則可能需要更常清潔。
- 如房間濕度非常高，水滴便會凝結在空氣質素感應器上，即使實際空氣質素良好，空氣質素燈仍可能會顯示較差的空氣質素。在此情況下，請清潔空氣質素感應器或以手動設定空氣清新機的速度。

- 1 使用柔軟毛刷清潔空氣質素感應器的進氣口或排氣口（圖 22）。
- 2 拆下空氣質素感應器護蓋（圖 23）。
- 3 使用稍為濕潤的棉花棒清潔空氣質素感應器和塵埃的出入口（圖 24）。
- 4 使用乾爽的棉花棒徹底擦乾所有部件。
- 5 重新裝上空氣質素感應器護蓋（圖 25）。



清潔前層濾網

當  亮起且螢幕顯示 F0 時，請清潔前層濾網（圖 26）。

- 1 關閉空氣清新機，並將插頭從牆身插座拔出。
- 2 拉出前蓋的頂部，將濾網從裝置中取出（圖 3）。
- 3 向下按兩個夾子，然後將前層濾網拉向自己（圖 4）。
- 4 如果前層濾網內部十分骯髒，可用軟刷將塵埃刷走。然後利用自來水沖洗前層濾網（圖 27）。
- 5 先徹底風乾前層濾網，然後將其裝回空氣清新機內。
- 6 將前層濾網放回本產品內（圖 8）。


≡ 備註

- 將前層濾網放回本產品前，請確保前層濾網完全乾透。如果前層濾網仍是濕的，細菌可能會滋生，縮短前層濾網的壽命。

- 7 要重新安裝前蓋，先將護蓋固定於本產品底部 (1)。然後將護蓋頂部輕輕地推向本產品的機身 (2)（圖 9）。
- 8 將空氣清新機的插頭插入牆身插座。
- 9 觸控  按鈕 以啟動本產品。
- 10 按住重設按鈕  3 秒以重新設定前層濾網清潔時間。
- 11 安裝濾網後，必須徹底洗淨雙手。

6 更換空氣清新機濾網

了解清新空氣保護鎖

空氣清新機設有濾網替換指示燈，以確保空氣清新機濾網在空氣清新機運作時處於良好狀態。需要更換濾網時，螢幕會顯示濾網代碼及更換濾網警示（）亮起紅燈。


如果您沒有及時更換濾網，本產品將停止運作及自動鎖定，以保障房間的空氣質素。請根據濾網代碼儘快更換濾網。

更換濾網

備註

- 請勿清洗或重用空氣清新機濾網。
- 更換濾網前，必須關閉空氣清新機，並將插頭從電源插座拔出。
- 請勿以吸塵機清潔濾網。
- 如果前層濾網已損壞、磨損或破裂，請勿使用。請瀏覽 www.philips.com/support 或聯絡您所在國家/地區的客戶服務中心。



濾網警示說明表（圖 28）

濾網指示燈狀態	動作
螢幕上顯示 A3，而且濾網更換指示燈  亮起	請更換 NanoProtect 濾網 Pro S3 (FY4152)

- 1 關閉空氣清新機，並將插頭從牆身插座拔出。
- 2 根據螢幕上的濾網指示燈狀態，取出舊的濾網。棄置舊的濾網（圖 29）。

備註

- 請勿觸摸折疊的濾網表面，或去聞濾網上的氣味，因為濾網上聚集了空氣中的污染物。

- 3 拆去新濾網上的所有包裝物料（圖 6）。
- 4 將拆除包裝的空氣清新機濾網放回裝置中（圖 7）。
- 5 將空氣清新機的插頭插入電源插座。
- 6 觸控  按鈕以啟動本產品。
- 7 按住重設按鈕  3 秒以重新設定濾網使用時間。

備註

- 更換濾網後，必須洗手。

7 存放

- 1 關閉空氣清新機，並將插頭從牆身插座拔出。
- 2 清潔空氣清新機、空氣質素感應器和前層濾網（請參閱「清潔」章節）。
- 3 必須讓所有部件風乾方可存放。
- 4 將濾網和前層濾網分開放入密封的膠袋中。
- 5 將空氣清新機、濾網和前層濾網存放於陰涼乾爽的地方。
- 6 處理濾網後，必須徹底洗淨雙手。

8 疑難排解

本章節總結一些您在本產品上最常見的問題。如果您按照以下資料仍未能解決問題，請聯絡您的國家的 Philips 顧客服務中心。

問題	可行解決方案
產品即使插上電源也沒有正常運作。	<ul style="list-style-type: none">請檢查頂蓋是否正確安裝。濾網更換指示燈已亮起但您沒有更換相應濾網，因此本產品已被鎖定。在這情況，請更換該濾網並重設濾網使用時間。
排氣口排出的氣流比以前明顯減弱。	<ul style="list-style-type: none">前層濾網處於骯髒的狀態。清潔前層濾網（請查看「清潔」一章）。
本產品經過長時間運作，空氣質素仍沒有改善。	<ul style="list-style-type: none">請檢查包裝材料是否從濾網中取出。本產品的其中一個濾網並未更換。請確認所有濾網均按正確次序裝上，從最內部數起：<ol style="list-style-type: none">1) NanoProtect 濾網 Pro S3 (FY4152)；2) 前層濾網。空氣質量感測器變濕。您的房間濕度高，導致水分凝結。確保空氣質素感應器清潔和保持乾燥（請參閱「清潔」一章）。
空氣質素光環的顏色永遠保持同一顏色。	<ul style="list-style-type: none">空氣質量感測器處於骯髒的狀態。清潔空氣質素感應器（請參閱「清潔」一章）。
本產品發出一陣怪味。	<ul style="list-style-type: none">在您最初數次使用本產品時，它可能會發出一點塑膠氣味。此為正常。可是，如果本產品在更換濾網後發出燒焦的氣味，請聯絡您的 Philips 經銷商或認可的 Philips 服務中心。由於吸收了室內氣體，濾網使用一段時間後可能會產生氣味。建議您將濾網置於陽光下晾曬，然後再重新使用。如果仍有異味，請更換濾網。
本產品聲浪太大。	<ul style="list-style-type: none">如果產品太吵，可調低風速。如晚上在睡房使用裝置，選擇寧靜速度。
即使我已替換濾網，本產品仍表示需要替換。	<ul style="list-style-type: none">可能您沒有重設濾網的使用時間。開啟本產品按住重設按鈕（↺）3 秒。
螢幕顯示「E1」的錯誤代碼。	<ul style="list-style-type: none">摩打出現故障。請聯絡您所在國家/地區的客戶服務中心。

問題	可行解決方案
螢幕上顯示了「E2」、「E3」、「E4」或「E5」的錯誤代碼。	<ul style="list-style-type: none">• 感應器出現故障。請聯絡您所在國家/地區的客戶服務中心。
未能成功設定 Wi-Fi。	<ul style="list-style-type: none">• 如果本產品所連接的路由器為雙頻，而目前不是連接 2.4GHz 網絡的話，請將該路由器的頻段切換至 2.4GHz，然後再次嘗試進行配對。不支援 5GHz 網絡。• Web 驗證網絡不受支援。• 檢查本產品是否在 Wi-Fi 路由器所覆蓋的範圍內。您可以嘗試將空氣清新機移近 Wi-Fi 路由器。• 請檢查網絡名稱是否正確。網絡名稱有大小寫之分。• 請檢查 Wi-Fi 密碼是否正確。密碼有大小寫之分。• 根據「重設 Wi-Fi 連線」部分的指示，嘗試重新設定。• Wi-Fi 連線可能被電磁場或其他干擾而中斷。讓本產品遠離可能會造成干擾的其他電子裝置。• 請檢查流動裝置是否處於飛行模式。連接至 Wi-Fi 網絡時，請確保已停用飛行模式。• 請參閱應用程式中的說明部分，以獲取最新的詳細疑難排解貼士。

9 保固與支援

Versuni 為這款產品提供購買後兩年保養。此保養不適用於因不正確使用或維護不良而造成的損壞。我們的保養不會影響您作為消費者的法律權利。有關啟動保養的詳情，請瀏覽我們的網站：www.philips.com/support。

訂購零件或配件

如果您需要更換零件或想訂購額外配件，請洽 Philips 經銷商或瀏覽 www.philips.com/support。

如果您索取有關零件時遇上問題，請聯絡您的國家/地區 Philips 客戶服務中心。

10 注意

電磁場 (EMF)

這款產品符合有關電磁場暴露的適用安全標準及條例。

回收

請勿在本產品使用壽命結束後當作一般家庭垃圾廢棄，應交給官方回收站或循環再用。這樣做有助保護環境。

請遵守您的國家/地區回收電器和電子產品的法則。正確處理有助避免對環境和人體造成負面影響。

注意

App Store 是 Apple Inc. 的服務標誌。
Google Play 是 Google Inc. 的商標。



