

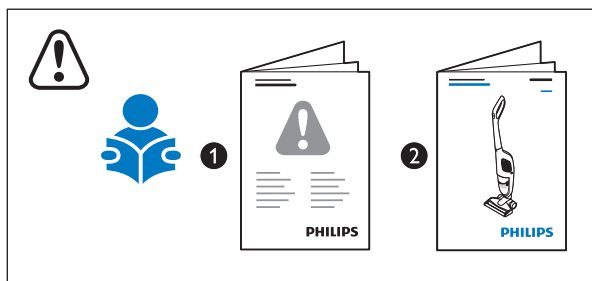
PHILIPS

FC6402, FC6401,
FC6400



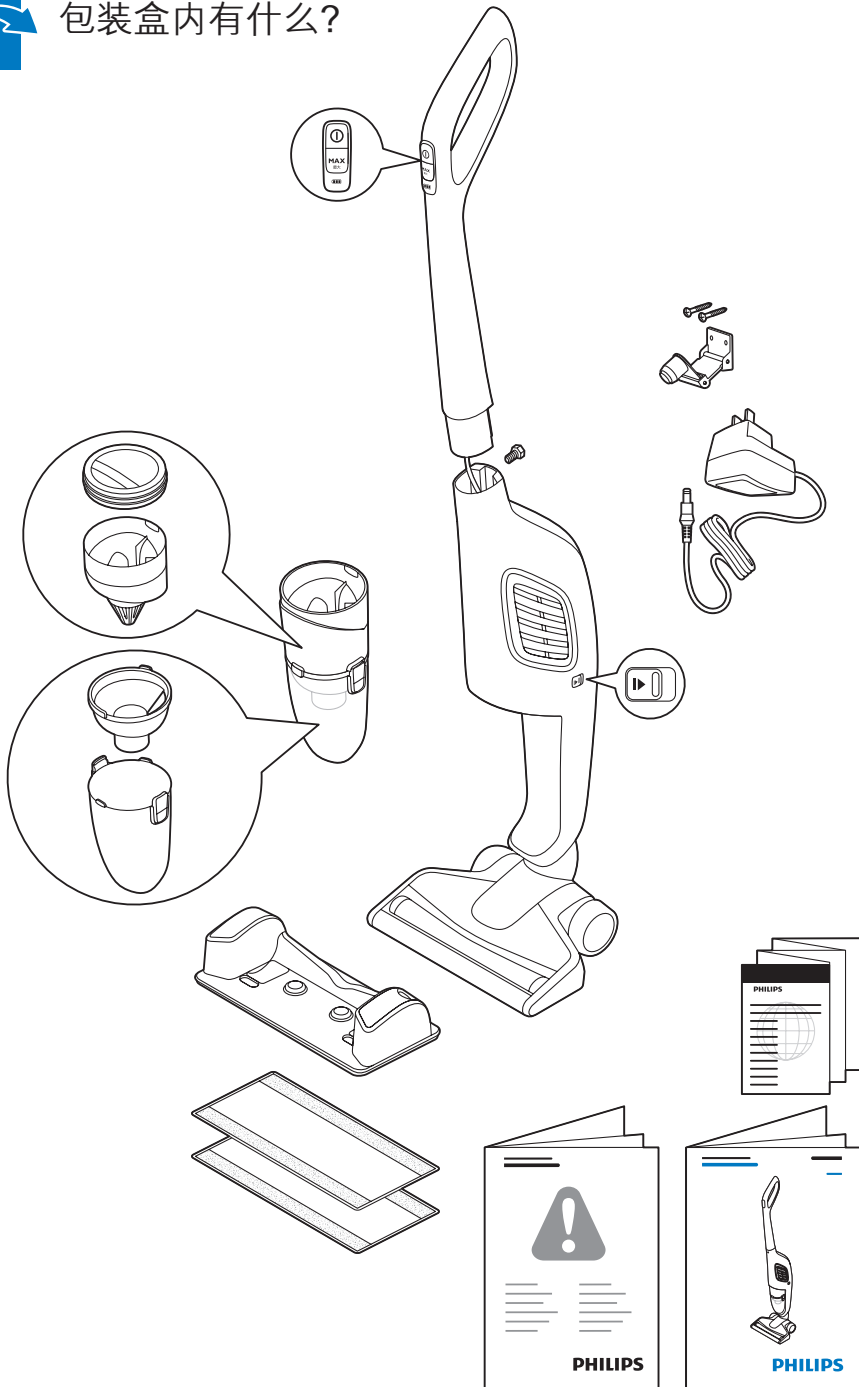
	注意事项	2				清洁产品	9
	包装盒内有什么?	3				清洁和存储水箱	10
	请注意!	4				维护: 滚刷	11
	充电	5				维护: 清除拖地吸嘴中的阻塞物	12
	提示	5				为水箱除垢	13
	吸尘	6				清洁微纤维软垫	14
	警告	6				更换微纤维软垫	14
	拖地	7				维护: 水箱金属条	15
	倒空集尘桶	8					

注意事项



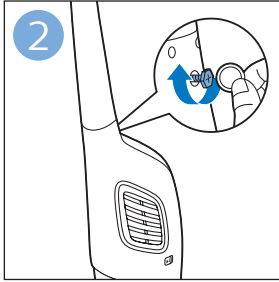
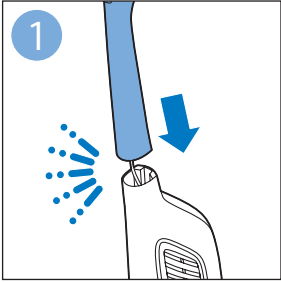


包装盒内有什么？



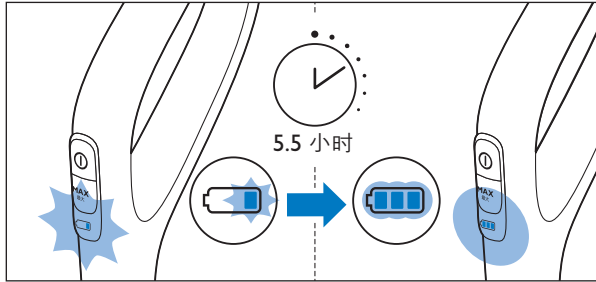
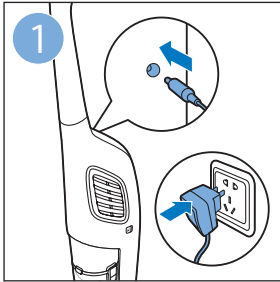


请注意!

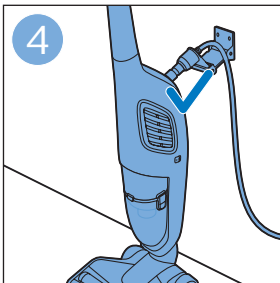
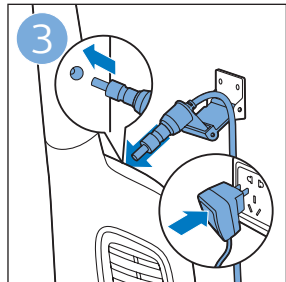
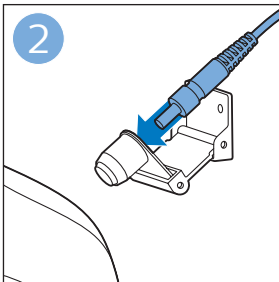
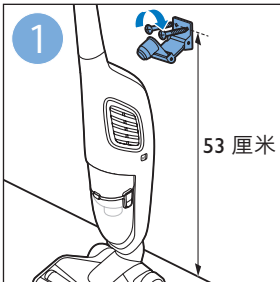




充电

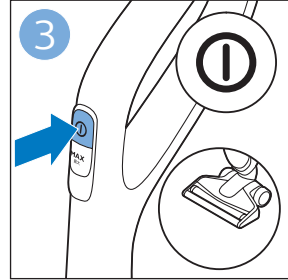


提示

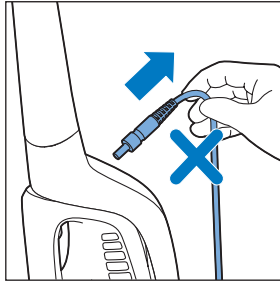
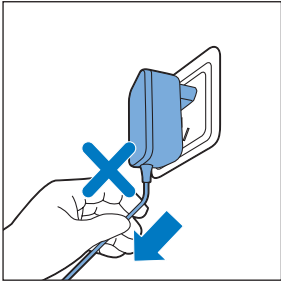




吸尘

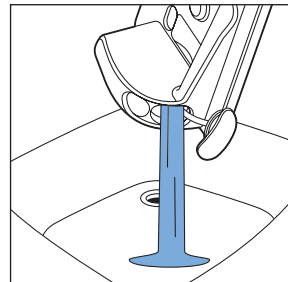
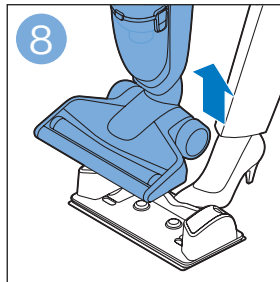
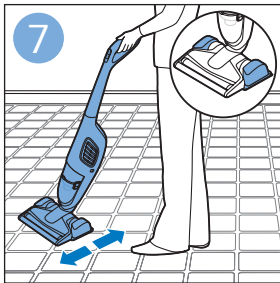
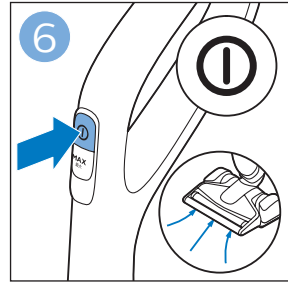
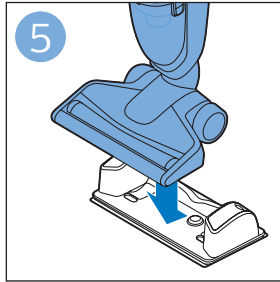
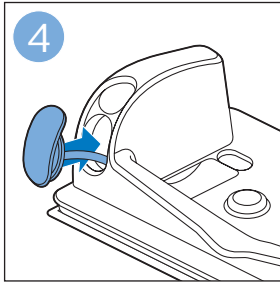
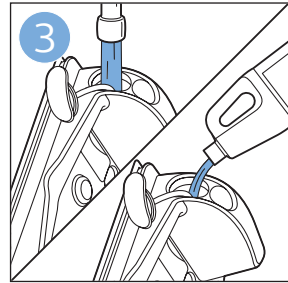
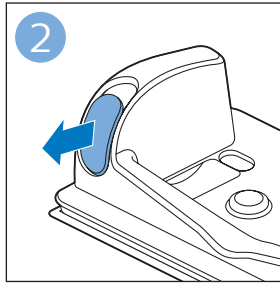
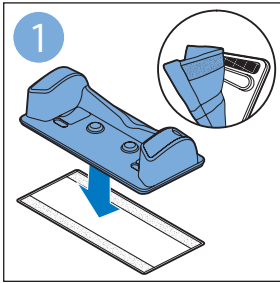


警告



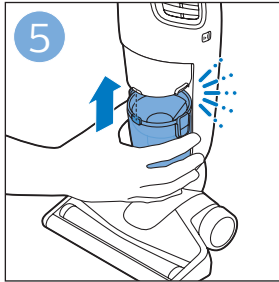
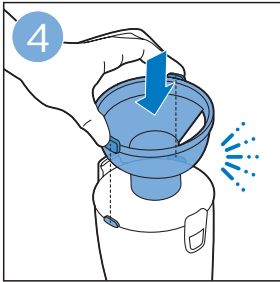
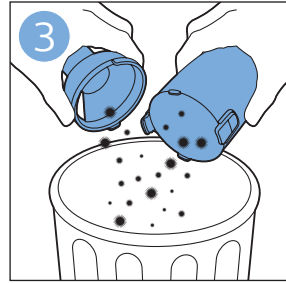
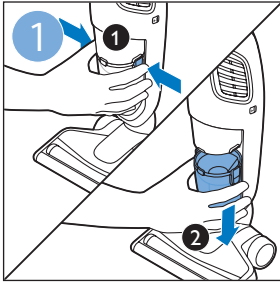


拖地



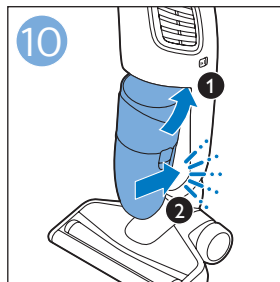
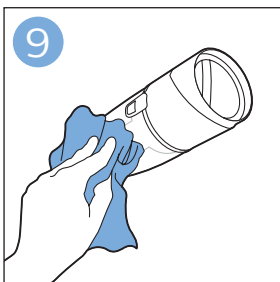
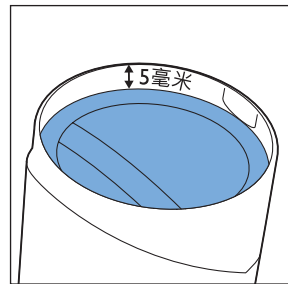
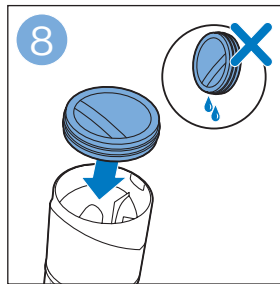
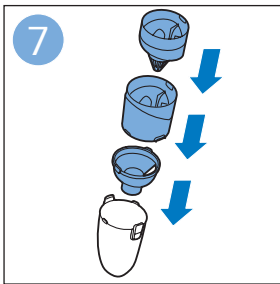
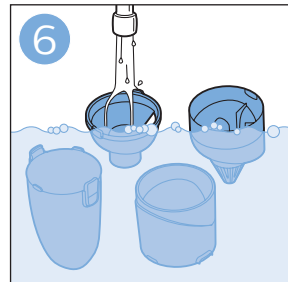
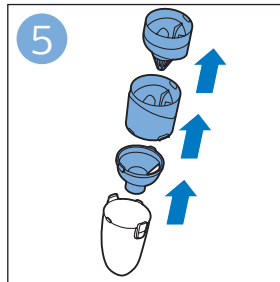
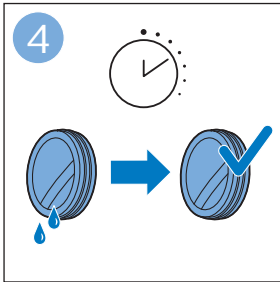
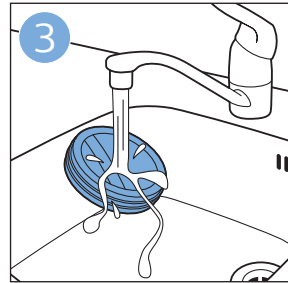
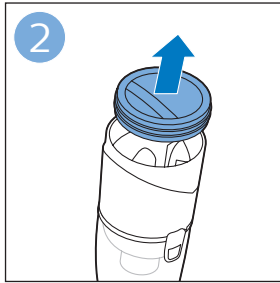
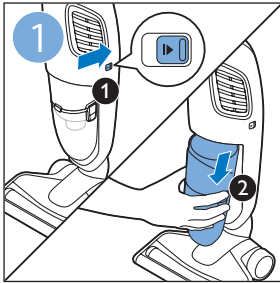


倒空集尘桶



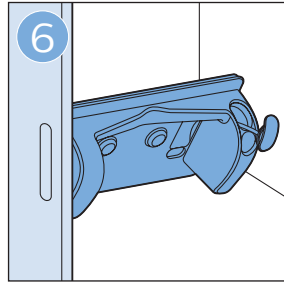
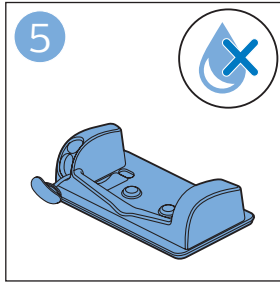
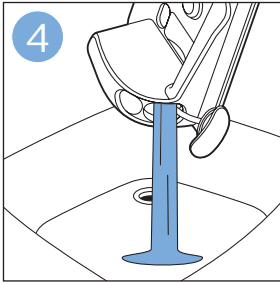
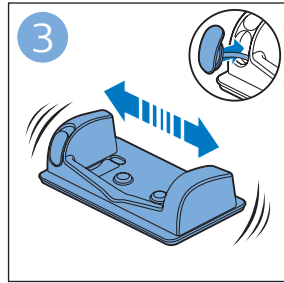
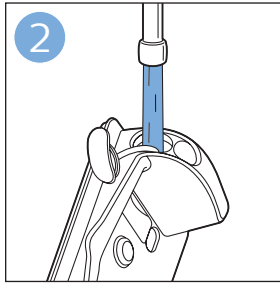
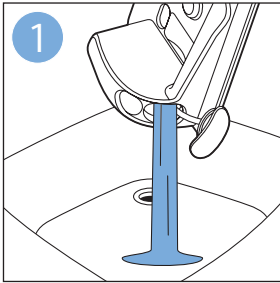


清洁产品



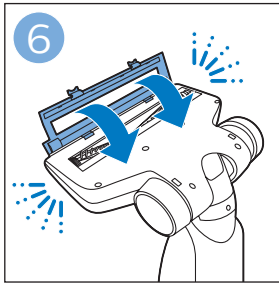
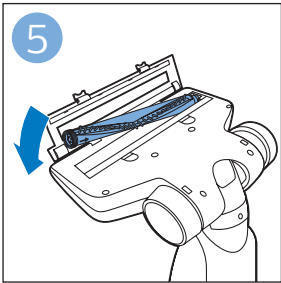
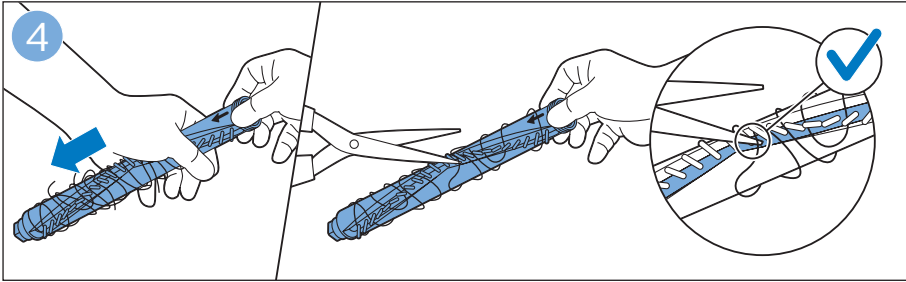
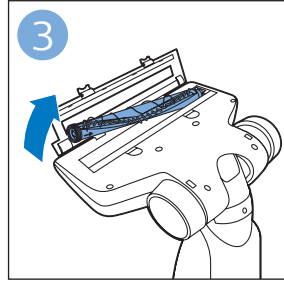
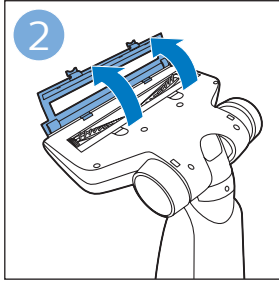
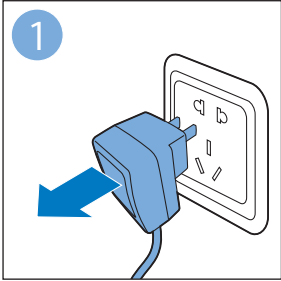


清洁和存储水箱



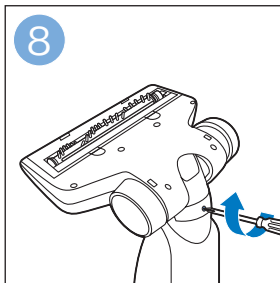
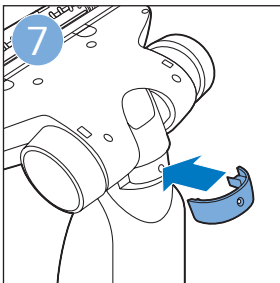
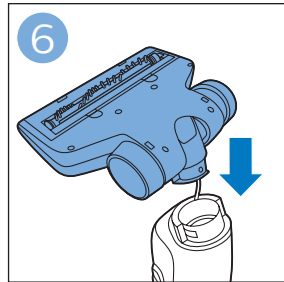
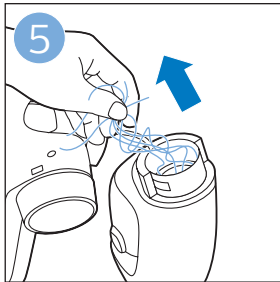
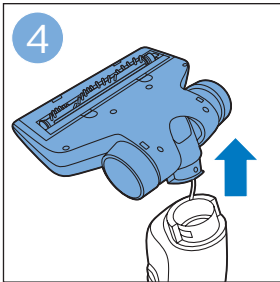
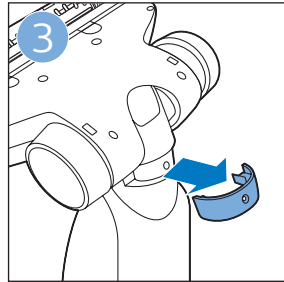
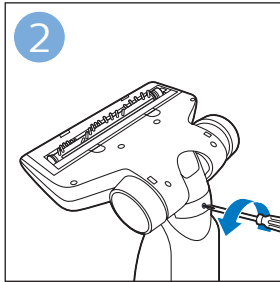
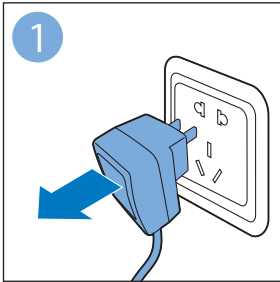


维护：滚刷



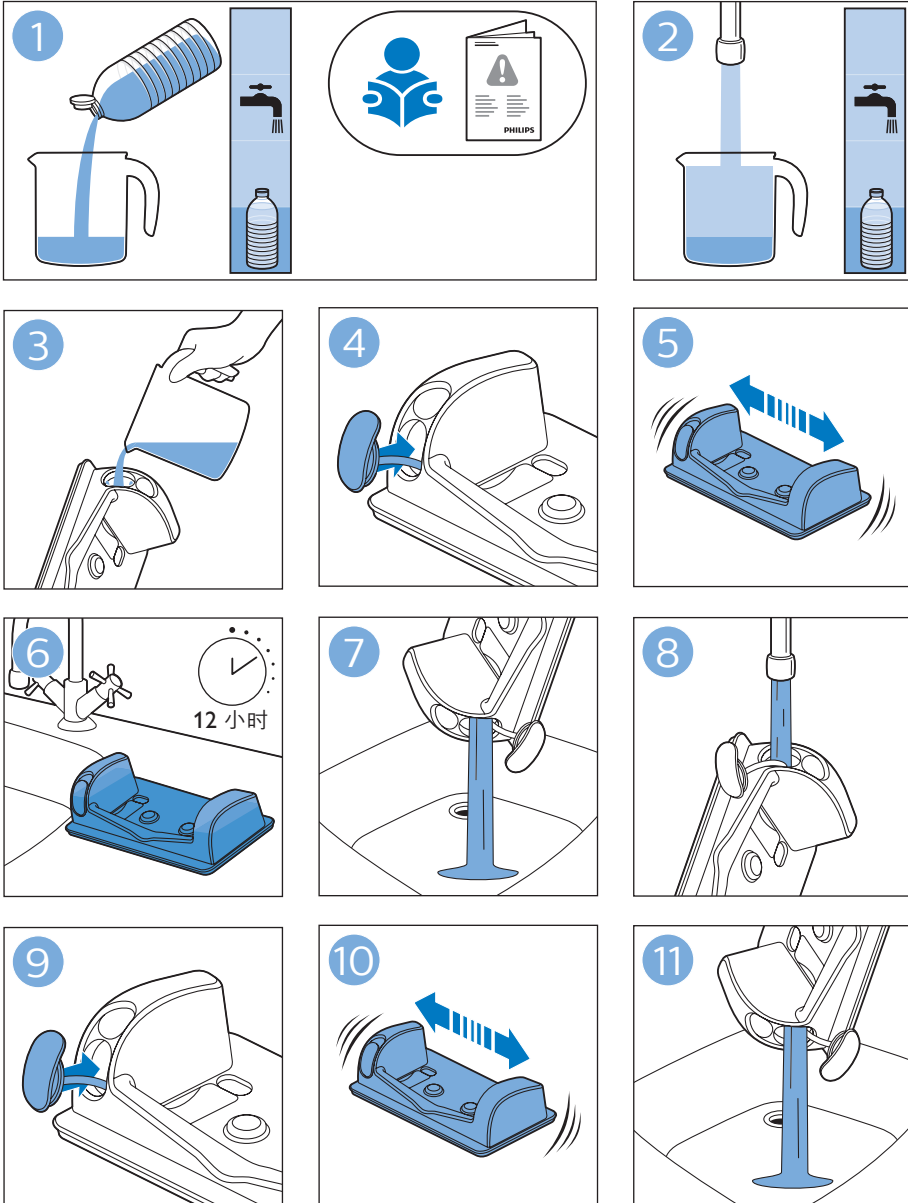


维护：清除拖地吸嘴中的阻塞物



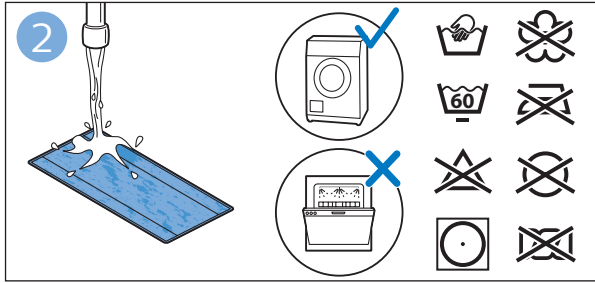
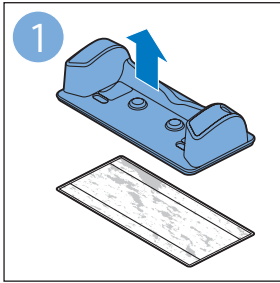


为水箱除垢

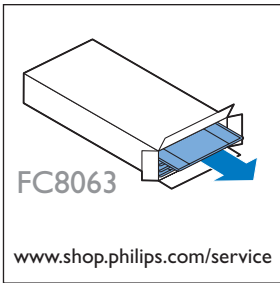
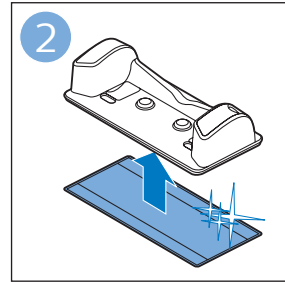
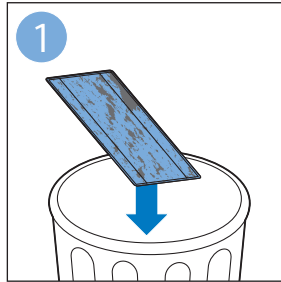
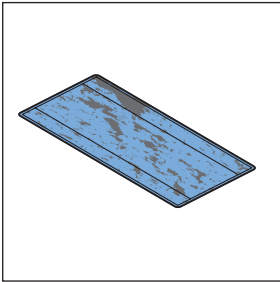




清洁微纤维软垫



更换微纤维软垫





维护：水箱金属条

