

Philips 1900 series  
Steam iron

Non-stick soleplate

GC1930



## Faster - from start to finish

Iron with fast water filling and emptying

There's so much more to life than household chores, so you want to get them done as quickly as possible. With its fast filling and emptying hole, pointed tip, and smooth-gliding soleplate, this Philips quality iron is simply built for speed

### **Easily removes creases**

- Steam boost to remove stubborn creases easily
- A fine spray evenly moistens the fabric
- Continuous steam output up to 17 g/min

### **Easy gliding on all fabrics**

- Non-stick soleplate coating

### **Longer lifetime**

- Double Active Calc System prevents scale build-up

### **Faster set-up and storage**

- Easy and super fast filling of the watertank
- Easy and super fast emptying of the watertank

# PHILIPS

Steam iron  
Non-stick soleplate

GC1930/22

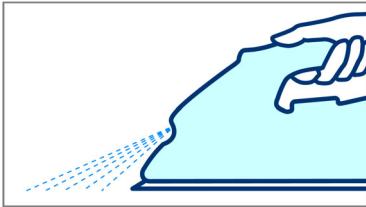
# Highlights

## Non-stick soleplate



The soleplate of your Philips iron is coated with a special non-stick layer for good gliding performance on all fabrics.

## Spray



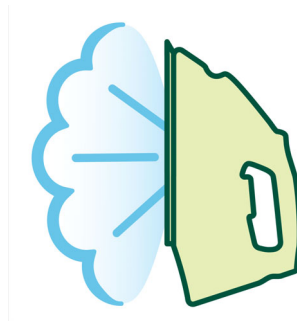
The spray function produces a fine mist that evenly moistens the fabric, making it easier to iron out creases.

## Double Active Calc System



Double Active Calc system of your Philips steam iron prevents scale build-up through anti scale pills and an easy to use calc clean function.

## Steam boost



Steam boost to remove stubborn creases easily.

## Easy and super fast emptying



Easy and super fast emptying of the watertank thanks to the huge emptying hole, and the sideways opening door.

## Easy and super fast filling



Easy and super fast filling of the watertank thanks to the huge filling hole, and the sideways opening door of the Philips iron.

## Continuous steam



Continuous steam output up to 17 g/min

# Specifications

## Fast & powerful crease removal

- Soleplate: Blue Ceralon
- Steam output
- Continuous steam output: 17 g/min
- Steam boost: 80 g
- Variable steam settings
- Spray
- Steam tip
- Power: 1700 W

## Easy to use

- Water tank capacity: 180 ml
- Filling and emptying water: Sideways opening door,

- Extra large filling hole
- Power cord length: 1.8 m
- Cord freedom (swivel): 180 degree cord freedom

## Calc management

- Suitable for tap water
- Calc clean solution: Double active calc clean

## Technical specifications

- Weight of iron: 1.06 kg
- Product dimensions: 26.1 x 11.5 x 13.6 cm
- Voltage: 220 V



Issue date 2014-02-13

Version: 3.0.1

© 2014 Koninklijke Philips N.V.  
All Rights reserved.

Specifications are subject to change without notice.  
Trademarks are the property of Koninklijke Philips N.V.  
or their respective owners.

[www.philips.com](http://www.philips.com)