

City line reach & clean

FC8412 / FC8410 / FC8406

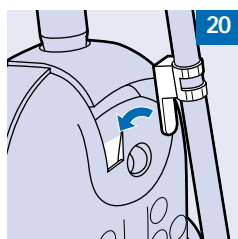
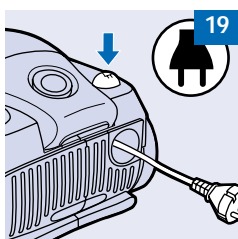
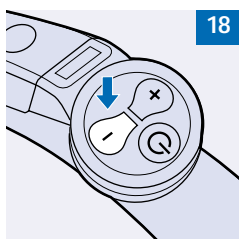
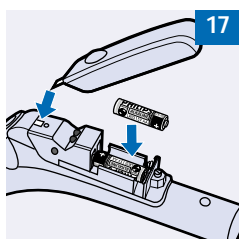
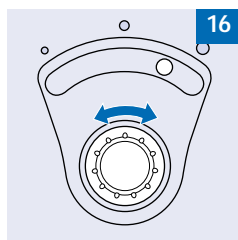
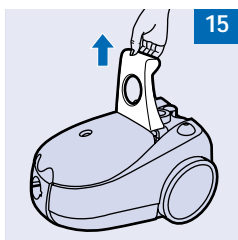
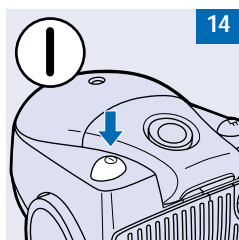
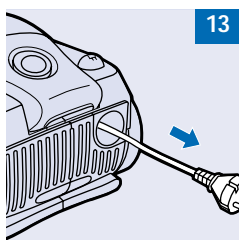
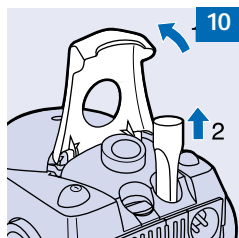
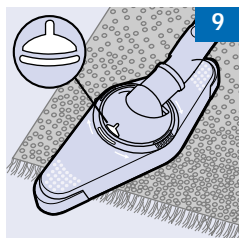
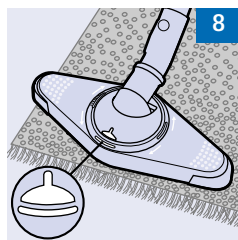
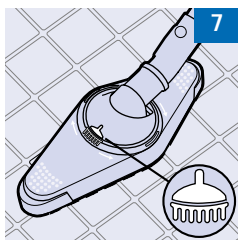
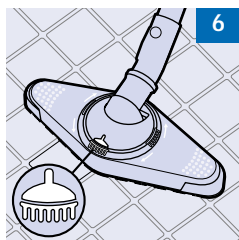
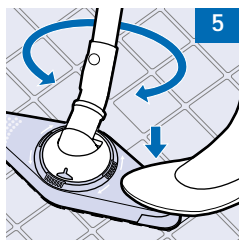
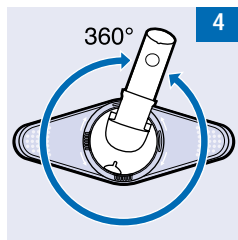
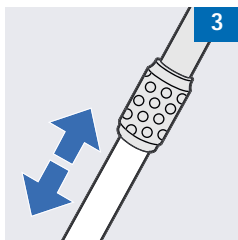
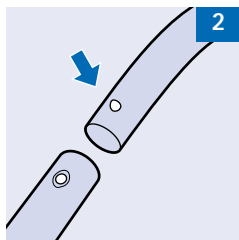
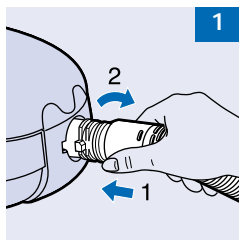


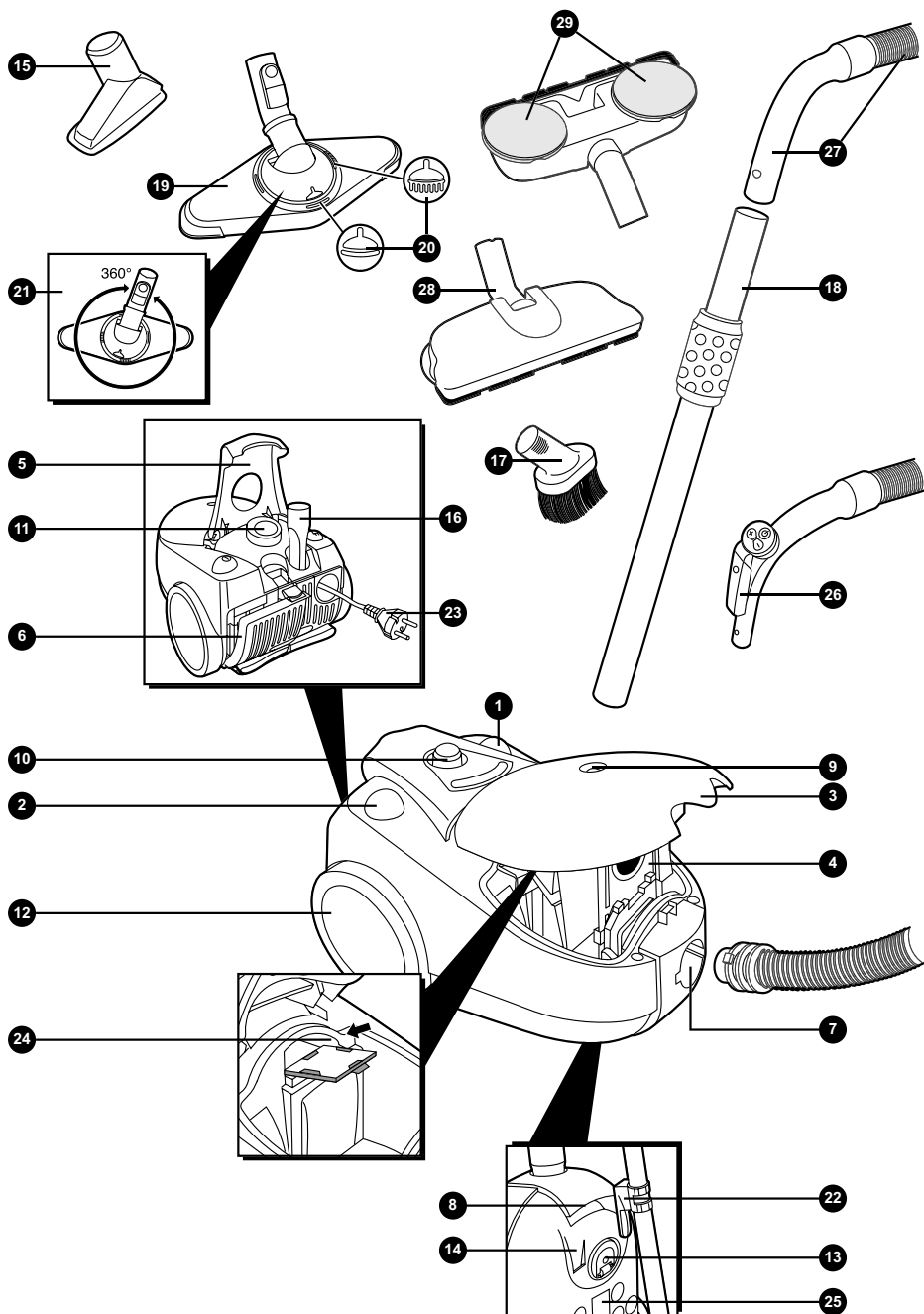
使用产品前请仔细阅读本使用说明书



PHILIPS







CITY LINE REACH & CLEAN
FC8412 / FC8410 / FC8406

ENGLISH 6
简体中文 11

Important

- Only use Philips s-bag™ double-layer paper dustbags (FC 8021) or Philips Sydney+ double-layer paper dustbags (type HR 6999).
- Never use the vacuum cleaner to suck up water or any other liquid. Never pick up ashes until they are cold.
- When the vacuum cleaner is used to suck up fine dust, the pores of the dustbag may become clogged, causing the passage of air through the dustbag to become obstructed. As a result, the dustbag-full indicator will indicate that the dustbag needs to be replaced, even though the dustbag is not full at all.
- Never use the appliance without the Motor Protection Filter. This could damage the motor and shorten the life of the appliance.
- Never clean the appliance with water.

General description

- 1 On/Off button
- 2 Cordwinder button
- 3 Opening dustcover
- 4 Dustbag
- 5 Hinging handle
- 6 Opening filtercover
- 7 Tapturn opening
- 8 Front grip
- 9 Dustbag full indicator
- 10 Turnknob (version FC8406 and FC8410)
- 11 Receiver unit (version FC8412)
- 12 Rearwheels
- 13 Castor wheel
- 14 Storage position
- 15 Small nozzle
- 16 Crevice tool
- 17 Small brush
- 18 Telescopic tube
- 19 Reach & Clean nozzle
- 20 Brush indications
- 21 Turning switch mechanism hard/soft floors
- 22 Parking ridge
- 23 Plug
- 24 Motor protection filter assy
- 25 Type plate

- 26 Infrared remote control (version FC8412)
- 27 Bend with hose assy
- 28 Twist & Clean nozzle (version FC8410 and FC8412)
- 29 Twist & Clean polishing pads (version FC8410 and FC8412)

Connecting accessories

- ▶ To connect the hose to the appliance, push it into the appliance and turn it clockwise (fig. 1). To disconnect the hose from the appliance, turn it anticlockwise and pull it out of the appliance.

Button coupling (specific types only)

- 1** Connect the tube to the handgrip by pressing the spring-loaded lock button on the handgrip and inserting the handgrip into the tube. Fit the spring-loaded lock button into the opening in the tube ("click") (fig. 2).
- ▶ To disconnect the tube from the handgrip, press the spring-loaded lock button and pull the handgrip out of the tube.
- ▶ Use the same method to connect and disconnect the other accessories.

Telescopic tube

- ▶ Adjust the tube to the length you find most comfortable during vacuum cleaning (fig. 3).

Reach & Clean nozzle

- ▶ The Reach & Clean nozzle can be used on either carpets or hard floors. The nozzle can be turned 360 degrees to 4 different positions, allowing you to also vacuum clean hard-to-reach places in an easy way. When the nozzle is positioned lengthwise, the suction power is concentrated at the front side of the nozzle (fig. 4).
 - ▶ To adjust the nozzle to the type of floor and the area to be cleaned, put your foot on the indicated spot and then turn the tube until the nozzle is in the required position (fig. 5).
- 1** With the nozzle positioned breadthwise and the brush strip folded out, you can vacuum clean large hard floor areas. Turn the tube until the brush strip pops out of the nozzle housing and the nozzle is positioned breadthwise (fig. 6).
 - 2** With the nozzle positioned lengthwise and the brush strip folded out, you can vacuum clean small hard floor areas. Turn the tube 90 degrees anti-clockwise until it is positioned lengthwise with the brush strip still folded out of the nozzle housing (fig. 7).
 - 3** With the nozzle positioned breadthwise and the brush strip folded in, you can vacuum clean large soft floor areas. Turn the tube 90 degrees anti-clockwise again to position the nozzle breadthwise and to make the brush strip disappear into the nozzle housing (fig. 8).
 - 4** With the nozzle positioned lengthwise and the brush strip folded in, you can vacuum clean small soft floor areas. Turn the tube 90 degrees anti-clockwise again until it is positioned lengthwise with the brush strip still folded in (fig. 9).

Crevice nozzle, brush nozzle and small nozzle

The crevice nozzle can be used either for cleaning narrow corners or hard-to-reach places.

- 1** Lift the handle on the vacuum cleaner to gain access to the accessory storage compartment (fig. 10).
- 2** Connect the crevice nozzle to the tube or directly to the handgrip.
- 3** The brush nozzle can be used for cleaning computers, bookshelves etc (fig. 11).

- 4 The small nozzle can be used for vacuum cleaning small areas, e.g. the seats of chairs and sofas (fig. 12).

Vacuum cleaning

- 1 Pull the cord out of the appliance and put the mains plug in the wall socket (fig. 13).
- 2 Switch the appliance on by pushing the on/off button on top of the appliance with your foot (fig. 14).
- 3 To carry the appliance, put the handle in upright position and lift the appliance by the handle (fig. 15).

Adjusting suction power

You can adjust the suction power during vacuum cleaning:

- 1 Adjust the suction power by means of the electronic suction power control (specific types only) (fig. 16).

Infrared remote control (specific types only)

- 1 Place the batteries in the battery compartment (fig. 17).

Make sure the - and + poles are pointing in the right direction.

- 2 With the infrared remote control you can set the suction power to one of 5 different suction power settings. When you switch the appliance on, it will always start running at the highest suction power setting.
- 3 By pushing the - button, you will reduce the suction power by one setting (fig. 18).
- 4 By pushing the + button, you will increase the suction power by one setting.
- 5 Push the standby button to temporarily switch the vacuum cleaner off, for instance when you have to move some furniture.
- 6 To continue vacuum cleaning, simply press the - button or the + button. The appliance will start operating at the previously selected suction power setting again.

Storage

- 1 Switch the appliance off.
 - 2 Remove the mains plug from the wall socket.
 - 3 Rewind the mains cord by pressing the cord rewind button (fig. 19).
 - 4 Put the appliance in upright position and attach the lower tube to the appliance by means of the clip (fig. 20).
- The height of the clip can be adjusted by sliding it along the tube.

Replacing the dustbag

- Replace the dustbag as soon as the "dustbag-full indicator" changes colour (when the nozzle is not placed on the floor).
- 1 Switch the appliance off.
 - 2 Open the cover (fig. 21).
 - 3 Push the dustbag holder backwards (fig. 22).

- 4** Remove the full dustbag from the holder by pulling the cardboard tag (fig. 23).
When you do this, the dustbag will be automatically sealed.
- 5** Slide the cardboard front of the new dustbag into the two grooves of the dustbag holder.
Press it down as far as possible (fig. 24).
- 6** Pull the dustbag holder forwards (you will hear a click) (fig. 25).
You cannot close the cover if no dustbag has been inserted.

Replacing filters

Motor Protection Filter

- 1** Replace the Motor Protection Filter when you insert the first of a new set of dustbags or once a year.
- 2** Insert the filter into the appliance with the white side facing upwards (fig. 26).

AFS Micro Filter

The AFS Micro Filter in this appliance will remove a large part of the smallest particles from the exhaust air by means of its electrostatically charged fibres.

- 1** Replace the AFS Micro Filter when you insert the first of a new set of dustbags or once a year (fig. 27).
- 2** Place the sides and the bottom edge of the new filter properly behind the ridges of the holder (fig. 28).
- 3** Make sure the filter has been properly inserted into the holder before you close the filter holder.

HEPA Filter (specific types only)

Some appliances are equipped with a HEPA Filter. This filter not only removes household dust, but also harmful microscopic vermin.

- 1** Replace the HEPA Filter at least once a year.
- 2** Open the filter grill (fig. 29).
- 3** Push both catches sideways and remove the filter (fig. 30).
- 4** Place the new filter with its white side pointing towards the appliance. Make sure that the Philips logo on the filter is visible and in the upper right-hand corner (fig. 31).
- 5** Secure the filter by pushing the catches home and close the filter grill (fig. 32).

Ordering dustbags and filters

Philips s-bag` paper dustbags are available under type number FC8021.

The recommended dustbags fit a variety of Philips vacuum cleaners. For compact vacuum cleaners like the City Line or the Impact, this means that the dustbags will not be filled to their maximum capacity, as the capacity of the dust compartment is smaller than that of the dustbag. However, this does not prevent your vacuum cleaner from functioning optimally.

Two AFS Micro Filters and one Motor Protection Filter are available under type number FC8032 .

HEPA Filters are available under type number HR6992.

If you have any difficulties obtaining dustbags, filters or other accessories for this appliance, please contact the Philips Customer Care Centre.

See the worldwide guarantee leaflet for telephone numbers of the Philips Customer Care Centre.

Environment

To make recycling possible, the plastics used for this appliance have been coded.

The cardboard packaging has been made of recycled material and is fully recyclable.

Remove the batteries when you discard the appliance. Do not throw the batteries away with the normal household waste, but hand them in at an official collection point. You can also take the batteries to a Philips service centre, which will dispose of them in an environmentally safe way.

Replacing the mains cord

If the mains cord of this appliance is damaged, it must always be replaced by Philips or a service centre authorised by Philips, as special tools and/or parts are required.

Solving problems

■ The suction power is insufficient:

- 1** Adjust the suction power by pushing the + button of the remote control (specific types only) (fig. 33).
- 2** Set the electronic suction power control to a higher setting (specific types only) (fig. 34).
- 3** Check if the dustbag needs to be replaced.
- 4** Check if the filters need to be replaced.
- 5** Check if the nozzle, tube or hose is blocked up.
- 6** To remove the obstruction, disconnect the blocked-up item and connect it (as far as possible) in reverse position. Switch the vacuum cleaner on to make the airflow suck the obstructing material out of the blocked-up item (fig. 35).

■ The infrared remote control does not function (FC 8412):

- 7** It is possible that the batteries are not making proper contact.
- 8** Remove the lid of the battery compartment and push the batteries back into place (fig. 17).
- 9** The batteries are empty.
- 10** Replace the batteries (make sure the - and the + poles of the new batteries are pointing in the right direction). Use LR03 batteries, preferably alkaline batteries (fig. 36).

Information & service

If you need information or if you have a problem, please visit the Philips Web site at **www.philips.com** or contact the Philips Customer Care Centre in your country (you will find its phone number in the worldwide guarantee leaflet). If there is no Customer Care Centre in your country, turn to your local Philips dealer or contact the Service Department of Philips Domestic Appliances and Personal Care BV.

重要信息

- ▶ 只能使用飞利浦 Philips s-bag™；双层纸制集尘袋 (FC 8021) 或飞利浦 Sydney+ 双层纸制集尘袋（型号 HR 6999）。
- ▶ 切勿用于吸干水或其它液体，只可吸取冷却后的灰烬。
- ▶ 当用吸尘器吸取细小灰尘时，集尘袋的洞孔可能会堵塞，导致通过集尘袋的气流不畅。此时，将出现集尘袋已满的指示灯，表示必须更换集尘袋，即使此时集尘袋并未装满。
- ▶ 请勿在未安装马达保护滤网的情况下使用吸尘器。这将会使马达受损，并缩短吸尘器的使用寿命。
- ▶ 切勿用水清洗本机。

产品图示

1. 开关
2. 电线回卷按钮
3. 盖子
4. 集尘袋
5. 手柄
6. 打开过滤器盖
7. 旋转阀打开
8. 前方手柄
9. 尘袋装满指示灯
10. 旋钮(FC8406 及 FC8410型)
11. 接收装置(FC8412型)
12. 后轮
13. 脚轮
14. 插槽
15. 小号吸嘴
16. 缝隙吸嘴
17. 小刷
18. 伸缩管
19. 多用途吸头
20. 毛刷指示灯
21. 软/硬地板旋转开关装置
22. 供竖立放置的夹件设计
23. 插头
24. 马达保护滤网
25. 产品铭牌
26. 红外遥控(FC8412型)

27. 弯管装置

28. 洁旋风吸尘嘴(FC8410 及 FC8412型)

29. 洁旋风清洁垫(FC8410 及 FC8412型)

连接件

- 将软管按入本机，并以顺时针方向旋转，即可安装软管（图1）。
要将软管从吸尘器上拆下，请将管端逆时针方向转动，并拉出软管。

底部接合（仅限某些特定型号）

- 1 将硬管互相连接起来，并连接到手柄上。方法是：按下手柄上带弹簧的锁定钮，将手柄插入硬管。将带弹簧的锁定钮固定在硬管的开口处（图2）。
- 要将硬管与握把分离，请按下弹簧式锁定钮并将握把从硬管中拉出。
- 请利用相同的方法来连接及拆开其它附件。

伸缩式吸管

- 在吸尘过程中，可将吸管好调整到您最认为舒适的长度。

多用吸尘头

- 多用吸尘头可用于地毯及硬面地板。该吸头可在4个不同的位置旋转360度，可使您轻易地深入到难以到达的部位。当吸头以纵长位置工作时，吸力将集中在吸头的前侧（图4）。
- 根据地面的类型及面积调整吸头，将脚置于规定的位置，旋转吸管，直到到达所需位置（图5）。
- 1 当吸头以横向位置工作时，您可清洁大面积硬面地板。旋转吸管，直到刷条露出吸头室，吸头到达横向位置（图6）。
- 2 当吸头位于纵向位置，刷条外露时，您可清洁小面积的硬面地板。将吸管沿逆时针方向旋转90度，直到吸头到达纵向位置，刷条露出吸头室（图7）。
- 3 当吸头位于横向位置，刷条内折时，您可清洁大面积的软面区域。将吸管沿逆时针方向旋转90度，使吸头位于横向位置，刷条缩入吸头室内（图8）。
- 4 当吸头位于纵向位置，刷条内折时，您可清洁小面积的软面区域。将吸管沿逆时针方向旋转90度，直到吸头到达纵向位置，刷条缩入吸头室内（图9）。

缝隙吸头、毛刷吸头及小型吸头

缝隙吸头可以用来清洁狭窄角落或难以清理的位置。

- 1 抬起本机上的手柄以打开附件储藏格（图10）。
- 2 将缝隙吸头连接到吸管上或直接连接到握把上。
- 3 此刷嘴可用于清洁电脑、书架等（图11）。
- 4 小型吸头可用于清洁小面积区域，如椅子的座位和沙发等（图12）。

使用吸尘器

- 1 将电线拉出本机，将主插头插入墙上插座（图13）。
- 2 用脚按下本机顶端开/关按钮，接通本机电源（图14）。
- 3 抬起本机时，请使手柄处于向上位置，用手柄抬起本机（图15）。

调整吸力

在进行清洁时，您可以调整吸尘器的吸力。

- 1 您可通过电子吸力控制（限于特定型号）来调整吸力（图16）。

红外遥控（仅限特定型号）

- 1 将电池装入电池格（图17）。

请确认电池的 - 和 + 极性没有装反。

- 2 利用红外线遥控装置，您可以将吸尘器的吸力调整到 5 个不同的设定。每次在您开启吸尘器的电源时，它都会以最大吸力的设定开始运转。
- 3 按下 - 按钮，您可以每次降低一格吸力（图18）。
- 4 按下 + 按钮，您可以每次升高一格吸力。
- 5 按下待机(Standby) 按钮可以暂时关闭吸尘器，例如在您必须搬动某些家具时。
- 6 要继续进行清洁时，只需按下 - 或 + 按钮即可。吸尘器会再次以先前的吸力设定开始工作。

存放

- 1 将吸尘器的电源关闭。
- 2 将电源插头从插座中拔出。
- 3 按下电源线回卷按钮将线回卷到吸尘器中。
- 4 将吸尘器直立起来，并利用夹子将下侧吸管装在吸尘器上（图20）。
 - 夹子的高度可以沿着吸管滑动来进行调整。

更换集尘袋

- 一旦集尘袋已满指示灯改变颜色，应立即更换集尘袋（当吸嘴未至于地面上时）。
- 1 将吸尘器的电源关闭。
- 2 打开盖子（图21）。
- 3 将集尘袋固定架向后推(图22)。
- 4 将集尘袋的纸板片边缘向上拉，即可将满的集尘袋取下（图23）。

在您拆下集尘袋时，集尘袋会自动封闭。
- 5 将新集尘袋的纸板片套入集尘袋固定架上的两个狭槽中，尽量向下按（图24）。
- 6 向前拉动集尘袋的拉手(您将听到咔嗒声)（图25）。

如果没有装入集尘袋，您将无法关闭上盖。

更换过滤网

马达保护滤网

- 1 请在您更换新的一套集尘袋中的第一个集尘袋时更换电动机保护滤网，或者每年更换一次。
- 2 将过滤网插入本机中，白色的一面向上（图26）。

AFS微尘过滤网

本机中的AFS微尘过滤网可静电充电纤维从空气中去除大部分的最小颗粒。

- 1 在第一次更换新的集尘袋时，或是每年一次，应更换AFS微尘过滤网（图27）。
- 2 将新过滤网的边侧和底部边缘正确置于集尘袋固定架后（图28）。
- 3 在您关闭滤网的固定器之前，请确定滤网已经正确装入固定架中。

HEPA过滤网（仅限特定型号）

某些型号的吸尘器装有HEPA过滤网。该过滤网不仅可去除屋尘，也可吸除有害的微型寄生虫。

- 1 最少每年一次更换HEPA过滤网。
- 2 打开过滤网格栅（图29）。
- 3 将两个抓手向两侧拉，取下过滤网（图30）。
- 4 装上新的过滤网，白色一面朝向吸尘器。请确保飞利浦的标记位于右上角，清晰可见（图31）。
- 5 将抓手按回原处，使其安全到位，关上过滤器格栅（图32）。

订购集尘袋及过滤网

可提供适用于FC8021型号的 Philips s-bag™ 纸质集尘袋。

建议的集尘袋适用于各种飞利浦吸尘器。对于小型吸尘器（如 City Line 或 Impact），这种集尘袋无法发挥最大的容量功效，因为它的集尘室的容积比集尘袋小。但这并不妨碍吸尘器发挥正常的功能。

可提供适用于FC8032 型号的两个AFS微尘过滤网和一个马达保护滤网。

可提供适用于HR6992 型号的HEPA过滤网。

如果您在获得集尘袋、过滤网或本机其它配件的过程中遇到任何困难，请和飞利浦客户服务中心联系。

请查阅全球保修卡上各飞利浦客户服务中心的电话号码。

环保

为实现回收利用,我们对此吸尘器中使用的塑料进行了编号。

包装纸箱也由再生材料制成,完全可以回收。

当您要抛弃本吸尘器时，请先拆下电池。不要将电池与一般家庭废弃物一起丢弃，请将它送到合法的回收站。您也可以将它交给飞利浦服务中心，他们将以不会破坏环境的方法进行处理。

更换电源线

如果本吸尘器的电源线损坏，必须由飞利浦或者飞利浦授权的服务中心进行更换，因为这需要特殊的工具及/或零件。

解决问题

- ❶ 吸力不足：
- 1 按下遥控器上的 +按钮以调整吸力（仅限特定型号）（图33）。
 - 2 将电子吸力调整到更高一级（仅限特定型号）（图34）。
 - 3 检查是否需要更换集尘袋。
 - 4 检查是否需要更换滤网。
 - 5 检查吸尘嘴,硬管,软管是否堵塞。
 - 6 如堵塞，解决方法是，断开堵塞的部位，将其连接到另一端(越远越好)。接通吸尘器电源，迫使空气从相反方向通过堵塞部位（图35）。
- ❷ 红外线遥控装置不起作用 (FC 8412)：
- 7 可能是电池没有正确接触。
 - 8 打开电池格盖，将电池按下到位（图17）。
 - 9 电池没电。
 - 10 装如新的电池（请确保新电池的正极和负极指向正确的位置）。使用LR03电池，最好为锂电池（图36）。

信息和服务

如果您需要更多信息,或者您有任何问题,请访问我们的飞利浦网站: www.philips.com, 或和您所在国家的飞利浦顾客服务中心联系(您可在全球保修卡上找到服务中心的电话号码)。如果您所在的国家没有任何顾客服务中心,则请与当地的飞利浦经销商或飞利浦家用电器服务部门和客户关怀部门联系。

产品型号 规格

型号	额定功率	额定电压 / 频率
FC8406 (有调)	1300W	220V - 50Hz
FC8410 (有调)	1300W	220V - 50Hz
FC8412 (遥控)	1300W	220V - 50Hz

产品附件名称及数量

名称 / 数量	FC8406	FC8410	FC8412
软管	1	1	1
伸缩接管	1	1	1
缝隙吸嘴	1	1	1
毛刷	1	1	1
小号吸嘴	1	1	1
多用途吸头 (洁玲珑吸尘嘴)	1	1	1
洁旋风吸尘嘴	—	1	1

注意事项

维护和保养

- 除说明书上注明允许使用者进行维护和保养的项目外，其他的维护和保养的项目必须由飞利浦指定的维修中心进行。
- 切勿让儿童使用此产品。
- 当使用完毕或离开时，要切断电源。
- 对产品在使用时如出现异常的情况(如噪音、气味、温度升高、烟雾等)应立刻切断电源，停止继续使用。
- 使用者可联系飞利浦全国顾客免费服务热线、当地的飞利浦办事处或飞利浦维修中心进行咨询。

故障种类和处理方法

- | | |
|--|--|
| <ul style="list-style-type: none">• 机器不能工作 | <ul style="list-style-type: none">• 请检查机器是否接上电源；• 电源开关是否打到“开”的位置上；• 其他配件是否已装上(如适用产品)。 |
| <ul style="list-style-type: none">• 如果经上述的检查，机器还是无法开动 | <ul style="list-style-type: none">• 使用者可联系飞利浦全国顾客免费服务热线、当地的飞利浦办事处或飞利浦维修中心进行咨询。 |
| <ul style="list-style-type: none">• 产品在使用时如出现异常的情况(如噪音、气味、温度升高、烟雾等) | <ul style="list-style-type: none">• 应立刻切断电源，停止继续使用。• 使用者可联系飞利浦全国顾客免费服务热线、当地的飞利浦办事处或飞利浦维修中心进行咨询。 |

CCEE证书号：CH0072287-2001

PHILIPS

产品：飞利浦家用真空
卧式吸尘器
型号：FC 8406 / FC 8410 /
FC 8412
额定电压：220V ~
额定频率：50Hz
额定输入功率：1300瓦
产地：中国



春飞家用电器有限公司
中国苏州新区玉山路
邮编：215011 电话：0512-6825 3516

全国顾客免费服务热线：800 8203 678

本产品根据国标GB4706.1-1998及GB4706.7-1999制造

发行日期：09/2002

