

Always here to help you /
始终如一地为您提供帮助

Register your product and get support at /
请登录以下网址并得到相应的帮助
www.philips.com/welcome

HD5412



PHILIPS



PHILIPS

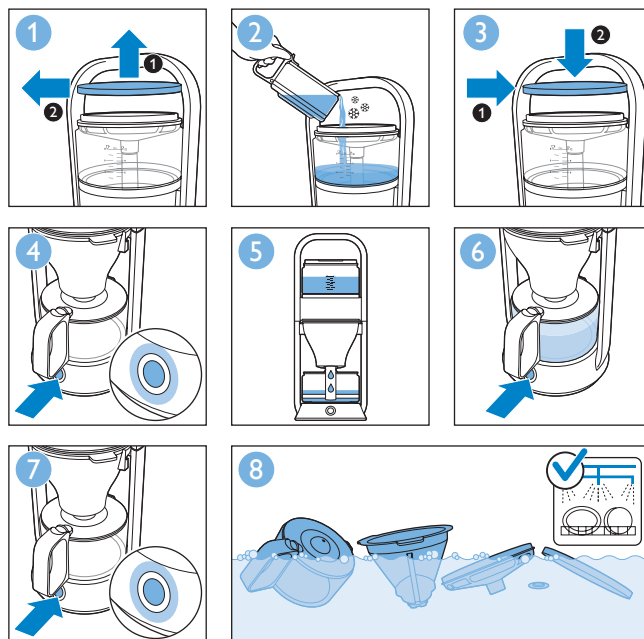
产品 : 飞利浦滴漏式咖啡机
型号 : HD5412
额定电压 : 220V~
额定频率 : 50Hz
额定输入功率: 1150 W
生产日期 : 请见产品本体
产地 : 波兰

制造商: 飞利浦电子香港有限公司
香港新界沙田香港科学园科技道东五号

经销单位: 飞利浦(中国)投资有限公司
上海市天目西路218号1602-1605
全国顾客服务热线: 4008 800 008

本产品根据国标 GB4706.1-2005,
GB4706.19-2008制造

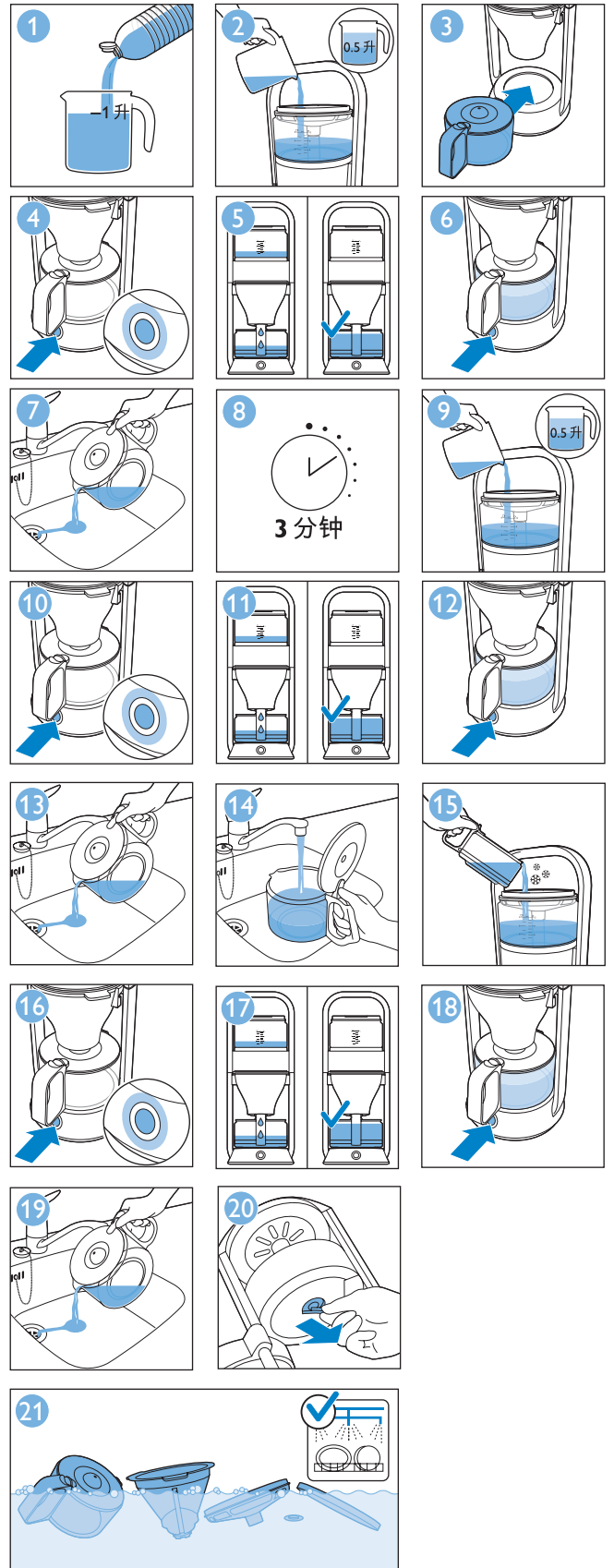
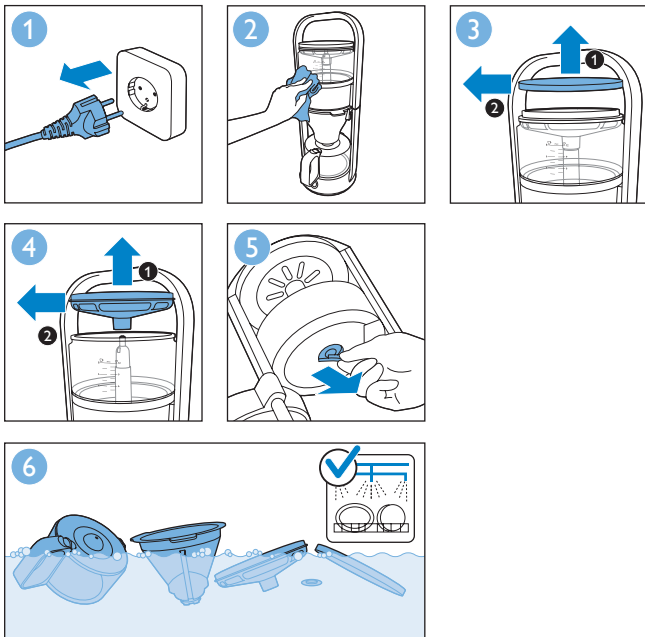
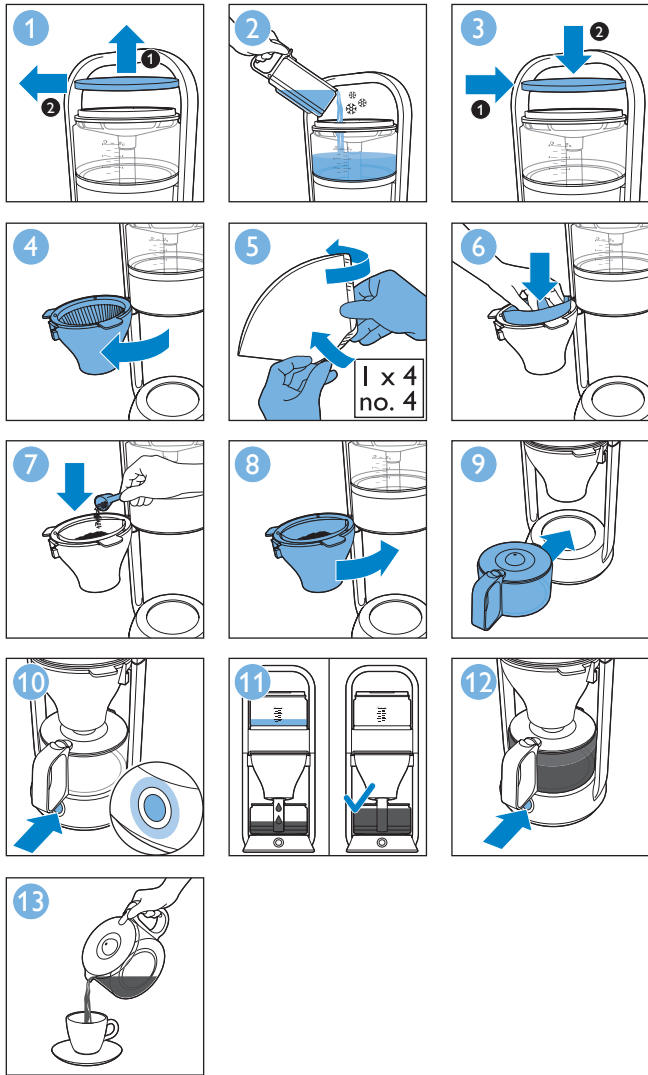
保留备用
发行日期: 28/05/2015



100% recycled paper
100% 循环再造纸

www.philips.com

4222.200.0471.1



Introduction

Congratulations on your purchase and welcome to Philips! To fully benefit from the support that Philips offers, register your product at www.philips.com/welcome. Philips Cafe Gourmet combines exceptionally aromatic coffee with an exclusive and eye-catching design. Thanks to the superior 'Boil & Brew' principle, the coffee is brewed under ideal conditions. This principle is derived from the classic coffee-brewing method of pouring a substantial quantity of water just off the boil onto fresh ground coffee. The striking design allows you to follow this process from beginning to end. The result is steaming hot coffee with the full flavour of manual drip-brewed coffee, conveniently prepared with a sophisticated coffee maker. Enjoy your Cafe Gourmet!

Important

Read this user manual carefully before you use the appliance and save it for future reference.

Danger

- Never immerse the appliance in water or any other liquid, nor rinse it under the tap.

Warning

- Check if the voltage indicated on the appliance corresponds to the local mains voltage before you connect the appliance.
- Do not use the appliance if the plug, the cord or the appliance itself is damaged.
- If the mains cord is damaged, you must have it replaced by Philips, a service centre authorised by Philips or similarly qualified persons in order to avoid a hazard.
- This appliance is not intended for use by persons (including children) with reduced physical, sensory or mental capabilities, or lack of experience and knowledge, unless they have been given supervision or instruction concerning use of the appliance by a person responsible for their safety.
- Children should be supervised to ensure that they do not play with the appliance.
- Keep the appliance and its cord out of the reach of children.
- Never connect this appliance to an external timer switch or a separate remote control system to avoid a hazardous situation.
- Do not remove the lid of the water tank cover while the water is boiling.

Caution

- Do not place the appliance on a hot surface and do not let the mains cord come into contact with hot surfaces.
- Unplug the appliance if problems occur during brewing and before you clean it.
- This appliance is intended to be used in household and similar applications such as:
 - staff kitchen areas in shops, offices and other working environments;
 - farm houses;
 - by clients in hotels, motels and other residential type environments;
 - bed and breakfast type environments.

Electromagnetic fields (EMF)

This Philips appliance complies with all applicable standards and regulations regarding exposure to electromagnetic fields.

Ordering accessories

To buy accessories or spare parts, visit www.shop.philips.com/service or go to your Philips dealer. You can also contact the Philips Consumer Care Centre in your country (see the worldwide guarantee leaflet for contact details).

Recycling



Do not throw away the appliance with the normal household waste at the end of its life, but hand it in at an official collection point for recycling. By doing this, you help to preserve the environment.

Guarantee and support

If you need information or support, please visit www.philips.com/support or read the separate worldwide guarantee leaflet.

Troubleshooting

This chapter summarises the most common problems you could encounter with the appliance. If you are unable to solve the problem with the information below visit www.philips.com/support for a list of frequently asked questions or contact the Consumer Care Centre in your country.

Problem	Solution
The appliance fails to heat the water to boiling point.	Make sure that the appliance is plugged in.
	Make sure that the wall socket is live.
	Make sure that the appliance is switched on.
The water tank does not drain properly or does not drain at all.	Make sure that the appliance is plugged in.
	Make sure that the wall socket is live.
	Make sure that the appliance is switched on.
	Make sure that the cover of the water tank is placed correctly.
	Descale and clean the coffeemaker. Pay special attention to the rubber insert in the outflow opening of the water tank (see chapters  and ).
The water flows straight into the jug when I fill the water tank.	Make sure that you place the cover on the water tank before you fill it.
	If you have just brewed coffee, let the appliance cool down for 3 minutes before you brew coffee again.



Always flush the appliance with fresh water before first use. HD5412 only: the appliance switches off automatically after 30 minutes.



In case you want to brew another jug of fresh coffee right away, switch off the appliance and let it cool down for 3 minutes.



Never use scouring pads, abrasive cleaning agents or aggressive liquids such as petrol or acetone to clean the appliance.



Regular descaling prolongs the lifetime of the appliance and guarantees optimal brewing results. Descale the appliance every two months if you use soft water (up to 13dH) or every month if you use hard water (over 13dH). When you notice excessive steaming or the brewing time increases, descale more often. To descale the appliance, we advise you to use white vinegar (up to max 8% acetic acid), as other products may cause damage to the appliance.

简体中文

简介

感谢您的惠顾，欢迎光临飞利浦！为了您能充分享受飞利浦提供的支持，请在 www.philips.com/welcome 上注册您的产品。

飞利浦 Cafe Gourmet 将格外浓香的咖啡与引人注目的设计完美融合。采用卓越的“冲煮”原则，咖啡得以在理想条件下冲煮。该原则源自于经典的咖啡冲煮方法：将大量刚停止沸腾的水浇到新鲜的研磨咖啡上。一流的设计可让您在冲煮咖啡时从始至终遵循该流程，从而用精致打造的咖啡机，轻松制作出热气腾腾、风味十足的手工滴漏咖啡。尽享 Cafe Gourmet 奉上的美味咖啡吧！

注意事项

使用本产品之前，请仔细阅读本使用说明书，并妥善保管以备日后参考。

危险

- 不要将本产品浸入水或其它液体中，也不要在水龙头下冲洗。

警告

- 在将产品连接电源之前，请先检查产品所标电压与当地的供电电压是否相符。
- 如果插头、电源线或产品本身受损，请勿再使用本产品。
- 如果电源线损坏，为了避免危险，必须由飞利浦、飞利浦特约维修中心或有同等维修资格的专业人员来进行更换。
- 产品不打算由有肢体、感官或精神能力缺陷或缺少使用经验和知识的人（包括儿童）使用，除非有负责他们安全的人对他们进行与产品使用有关的监督或指导。
- 请照看好儿童，本产品不能用于玩耍。
- 将产品及其线缆放在儿童接触不到的地方。
- 切勿将本产品连接至外置定时器或单独的遥控系统上，以免发生危险。
- 请勿在水煮沸时取下水箱盖。

警告

- 切勿将本产品放在热的表面上，不要让电源线与热的表面接触。
- 如果在煮咖啡期间出现问题，请拔下产品的电源插头。器具在清洁前必须拔下电源插头或连接器，器具再次使用前必须把器具擦干。
- 本产品仅打算用于家用及类似用途，如：
- 商店、办公场所及其它工作环境的厨房；
- 农庄；
- 由旅店、旅馆及其它住宿型环境中的客人使用；
- 提供住宿和早餐的场所。

电磁场 (EMF)

本飞利浦产品符合所有有关暴露于电磁场的适用标准和法规。

订购附件

要购买附件和备件，请访问 www.shop.philips.com/service 或请联系飞利浦经销商。您也可以联系您所在国家/地区的飞利浦客户服务中心（联系详情，请参阅全球保修卡）。

回收

弃置产品时，请不要将其与一般生活垃圾堆放在一起；应将其交给官方指定的回收点。这样做有利于环保。

保修和支持

如果您需要信息或支持，请访问 www.philips.com/support 或阅读单独的全球保修卡。

故障种类和处理方法

本章归纳了使用本产品时最常见的一些问题。如果您无法根据以下信息解决问题，请访问 www.philips.com/support，查阅常见问题列表，或联系您所在国家/地区的客户服务中心。

问题

解决方法

产品无法将水加热至沸点。

确保产品电源插头已插上。

确保电源插座有电。

确保已打开本产品电源。



水箱未正确排空或根本没有排空。

确保产品电源插头已插上。

确保电源插座有电。

确保已打开本产品电源。

确保盖好水箱盖。

为咖啡机除垢并进行清洁。请格外注意水箱流水口中的橡胶垫（请参阅“”和“”章节）。

为水箱注水时，水会直接流入壶内。

确保在注水前先盖上水箱盖。

如果您刚刚冲煮了咖啡，请让产品冷却 3 分钟后再重新冲煮咖啡。



首次使用之前，请务必用清水冲洗产品。仅限于 HD5412：产品会在 30 分钟后自动关闭。



如果想立即再冲煮一壶新鲜咖啡，请关闭产品，让其冷却 3 分钟。



不要使用钢丝球、研磨性清洁剂或腐蚀性液体（例如汽油或丙酮）来清洁产品。



定期除垢既可延长产品的使用寿命，又可以确保最佳冲煮效果。每 2 个月（使用软水（13dH 或以下）时）或每月（使用硬水（13dH 以上）时）为产品除垢一次。当您发现蒸汽过多或冲煮时间增加时，需要更经常地除垢。为产品除垢时，建议您使用白醋（醋酸度最高为 8%），因为其他除垢产品可能会损坏本产品。