

Always there to help you

Register your product and get support at
www.philips.com/welcome



HD3017
HD3018

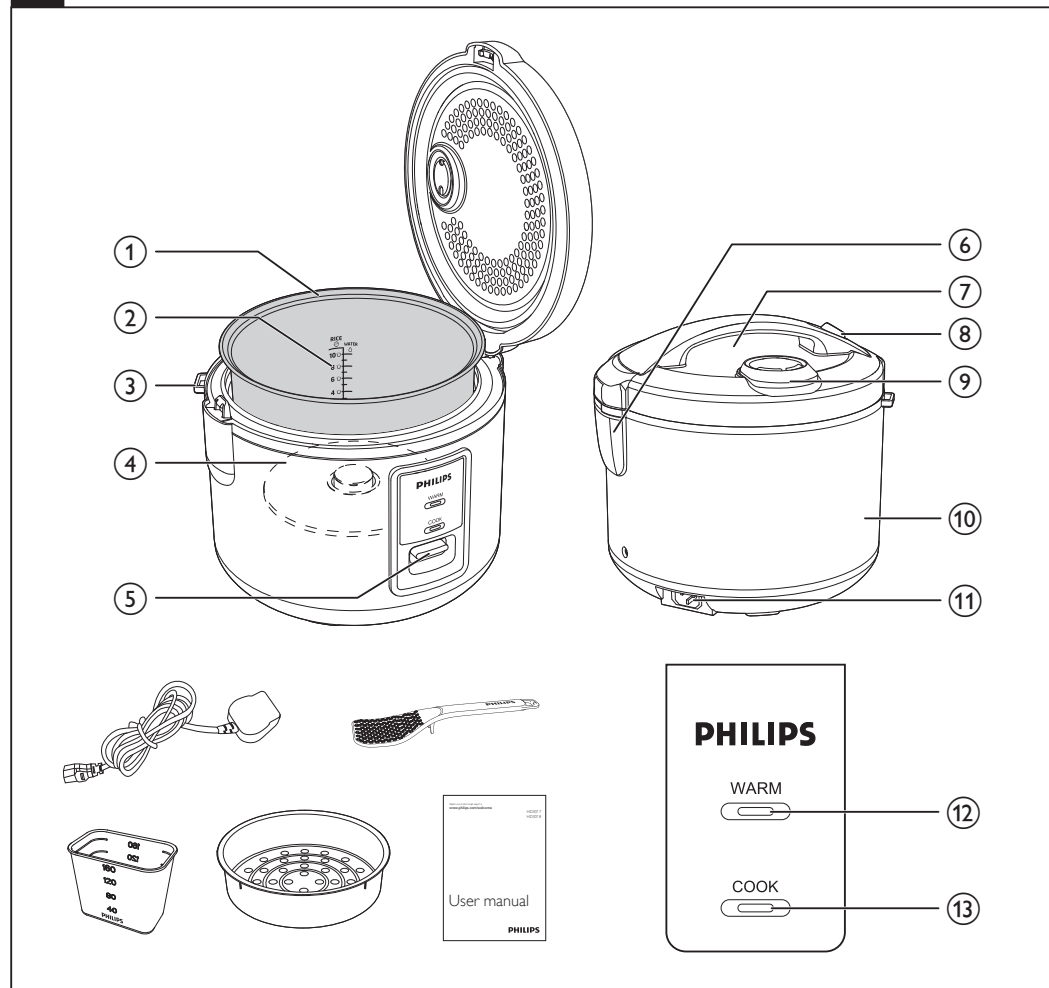


User manual

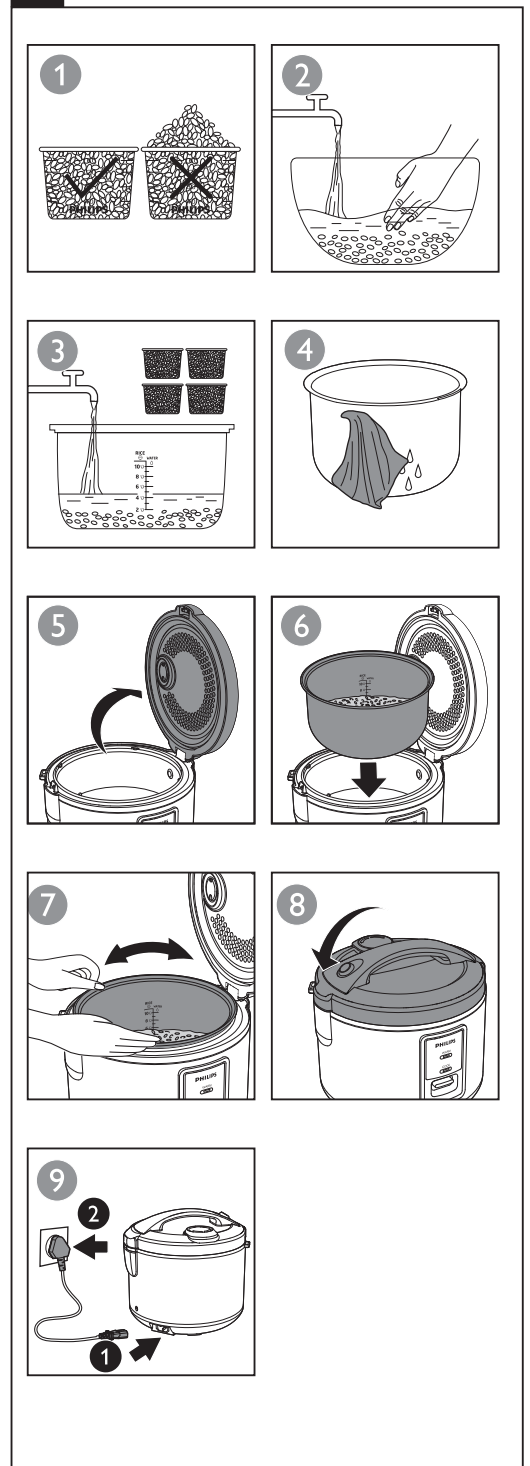
PHILIPS



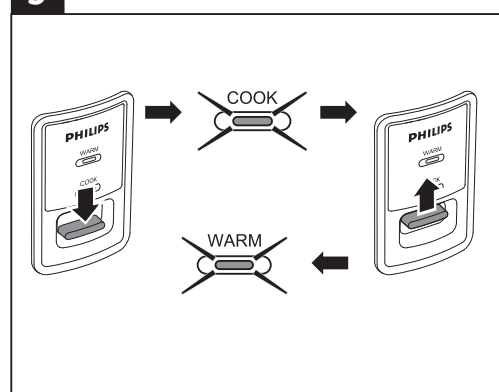
1 What's in the box



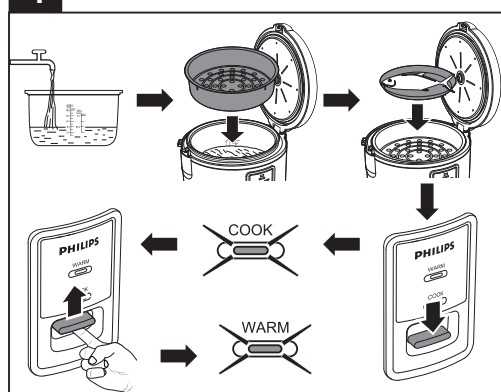
2 Using the rice cooker



3 Cooking rice



4 Steaming



Specifications are subject to change without notice.
© 2013 Koninklijke Philips Electronics N.V.
All rights reserved.

HD3017_3018_UM_India_V1.0



1 Your rice cooker

Congratulations on your purchase, and welcome to Philips!
To fully benefit from the support that Philips offers, register your
product at www.Philips.com/welcome.

2 Important

Read this user manual carefully before you use the rice cooker and
save it for future reference.

Danger

- Do not immerse the rice cooker in water, nor rinse it under the tap.

Warning

- Check if the voltage indicated on the rice cooker corresponds to the local power voltage before you connect it.
- Only connect the rice cooker to a grounded power outlet. Always make sure that the plug is inserted firmly into the power outlet.
- Do not use the appliance if the plug, the power cord, the inner pot, the sealing ring, or the main body is damaged.
- Make sure that the damaged power cord is replaced

by Philips, a service center authorized by Philips or similarly qualified persons in order to avoid a hazard.

- The appliance is not intended to be operated by means of an external timer or a separate remote-control system.
- The appliance is not intended for use by persons (including children) with reduced physical, sensory, or mental capabilities, or lack of experience and knowledge, unless they have been given supervision or instruction concerning use of the appliance by a person responsible for their safety.
- Children should be supervised to make sure that they do not play with the rice cooker.
- Keep the power cord out of the reach of children. Do not let the power cord hang over the edge of the table

or worktop on which the rice cooker stands.

- Make sure the heating element, the temperature sensor, and the outside of the inner pot are clean and dry before you put the plug in the power outlet.
- Do not plug in the rice cooker or press the control lever with wet hands.

Caution

- Never use any accessories or parts from other manufacturers or that Philips does not specifically recommend. If you use such accessories or parts, your guarantee becomes invalid.
- Do not expose the rice cooker to high temperatures, nor place it on a working or still hot stove or cooker.
- Do not expose the rice cooker to direct sunlight.
- Place the rice cooker on a stable, horizontal, and level surface.

- Always put the inner pot in the rice cooker before you put the plug in the power outlet and switch it on.
- Do not place the inner pot directly over an open fire to cook rice.
- Do not use the inner pot if it is deformed.
- The accessible surfaces may become hot when the rice cooker is operating. Be careful when touching the rice cooker.
- Beware of hot steam coming out of the steam vent during cooking or out of the rice cooker when you open the lid. Keep hands and face away from the rice cooker to avoid the steam.
- Do not lift and move the rice cooker while it is operating.
- Do not exceed the maximum water level indicated in the inner pot to prevent overflow.

- Do not place the cooking utensils inside the pot while cooking, keeping warm or reheating rice.
- Only use the cooking utensils provided. Avoid using sharp utensils.
- To avoid scratches, it is not recommended to cook ingredients with hard shells.
- Do not insert metallic objects or alien substances into the steam vent.
- Do not place a magnetic substance on the lid. Do not use the rice cooker near a magnetic substance.
- Always let the rice cooker cool down before you clean or move it.
- Always clean the rice cooker after use. Do not clean the rice cooker in dishwasher.
- Always unplug the rice cooker if not used for a longer period.
- The rice cooker is intended to be used in household or similar applications such as: Staff kitchen areas in shops, offices, and other residential type environments; Farm houses; By clients in hotels, motels and other residential type environments; Bed and breakfast type environments.
- If the rice cooker is used improperly or for professional or semi-professional purposes, or if it is not used according to the instructions in this user manual, the guarantee becomes invalid and Philips refuses liability for any damage caused.

Electromagnetic fields (EMF)

This appliance complies with all standards regarding electromagnetic fields (EMF). If handled properly and according to the instructions in this user manual, the appliance is safe to use based on scientific evidence available today.

3 What’s in the box (fig.1)

| | |
|-----------------------|---------------|
| Rice cooker main unit | Steam basket |
| Rice scoop | Measuring cup |
| User manual | Power cord |

Overview

| | | | |
|---|-------------------------|---|---------------------------|
| ① | Inner pot | ⑧ | Lid release button |
| ② | Water level indications | ⑨ | Detachable steam vent cap |
| ③ | Scoop holder | ⑩ | Main body |
| ④ | Heating element | ⑪ | Power socket |
| ⑤ | Control lever | ⑫ | Keep warm indicator |
| ⑥ | Steam water storage | ⑬ | Cooking indicator |
| ⑦ | Outer lid | | |

4 Using the rice cooker

Before first use

- 1 Take out all the accessories from the inner pot. Remove the packaging material of the inner pot.
- 2 Clean the parts of the rice cooker thoroughly before using the rice cooker for the first time (see chapter ‘Cleaning’).

Note

- Make sure all parts are completely dry before you start using the rice cooker.

Preparations before use (fig.2)

- Before using the rice cooker, you need to follow the preparation:
- 1 Measure the rice using the measuring cup provided.
 - 2 Wash the rice thoroughly.
 - 3 Put the pre-washed rice in the inner pot.
 - 4 Add rice and water at 1:2 ratio or as you would normally do while cooking on the gas stove. Make sure that you do not exceed the maximum level indicated as this may cause the water to overflow.
 - 5 Press the release lever to open the lid.
 - 6 Whip the outside of the inner pot dry, then put it in the rice cooker. Check if the inner pot is in proper contact with the heating element.
 - 7 Close the lid of the rice cooker, put the plug in the power socket.

Note

- Do not exceed the quantities indicated on the inside of the inner pot.
- The level marked inside the inner pot is just an indication. You can always adjust the water level for different types of rice and your own preference. If the voltage is unstable at the area you live, it is possible that the rice cooker overflows.
- Besides following the water level indication, you may also add rice and water at 1:2 ratio or as you would normally do while cooking on the gas stove for rice cooking. Do not exceed the quantities indicated on the inside of the inner pot.
- Make sure that the outside of the inner pot is dry and clean, and that there is no foreign residue on the heating element or the magnetic switch.

Cooking rice (fig.3)

- 1 Follow the steps in “Preparations before use”.
- 2 Press down the control lever, and the cooking (**COOK**) indicator lights up.
- 3 When the cooking is finished, the cooking (**COOK**) indicator will be off.
- 4 The rice cooker switches to keep warm mode automatically, and the keep warm (**WARM**) indicator lights up.

Note

- Do not exceed the volume indicated nor exceed the maximum water level indicated in the inner pot, as this may cause the rice cooker to overflow.

Steaming (fig.4)

- 1 Measure a few cups of water with the measuring cup.
- 2 Pour the water into the inner pot.
- 3 Put the steam basket into the inner pot.
- 4 Put the food into the steam basket.
- 5 Close the lid of the rice cooker, and put the plug in the power socket.
- 6 Push down the control key, and the cooking (**COOK**) indicator lights up.
- 7 When the steaming is finished, pull up the control key.
- 8 The rice cooker switches to keep warm mode, and the keep warm (**WARM**) indicator lights up.

Note

- Use a kitchen glove or a cloth, as the plate and steam basket will be very hot.
- You can cook rice while steaming food. Do not exceed the volume indicated nor immerse the steam basket in the water, as this may cause the rice cooker to overflow.
- You can adjust the water level as needed.

Specifications

| | |
|--------------------|-----------------|
| Model Number | HD3017/HD3018 |
| Rated power output | 650W |
| Rated capacity | 5.0L |
| Rice volume (cups) | 1.8L (1-7 cups) |

5 Cleaning and Maintenance

Note

- Unplug the rice cooker before starting to clean it.
- Wait until the rice cooker has cooled down sufficiently before cleaning it.

Interior

- Inside of the outer lid and the main body:
- Wipe with wrung out and damp cloth.
 - Make sure to remove all the food residues stuck to the rice cooker.
- Heating element:
- Wipe with wrung out and damp cloth.
 - Remove food residues with wrung out and damp cloth or toothpicks.

Exterior

- Surface of the outer lid and outside of the main body:
- Wipe with a cloth dampened with soap water.
 - Only use soft and dry cloth to wipe the control panel.
 - Make sure to remove all the food residues around the control buttons.

Accessories

- Rice scoop, inner pot, steam basket, steam vent cap:
- Soak in hot water and clean with sponge.

6 Environment

Do not throw away the appliance with normal household waste at the end of its life, but hand it in at an official collection point for recycling. By doing this, you can help to preserve the environment.



7 Warranty and service

If you need service or information, or if you have a problem, visit the Philips website at www.philips.com or contact the Philips Customer Care Center in your country. You can find its phone number in the Warranty and Service section at the end of the user manual. If there is no Customer Care Center in your country, go to your local Philips dealer.

8 Troubleshooting

If your rice cooker does not function properly or if the quality of the cooked food is insufficient, consult the table below. If you are unable to solve the problem, please contact the Philips Consumer Care Centre in your country.

| Problem | Solution |
|---|---|
| The lights on the panel do not go on. | There is a connection problem. Check if the power cord is connected to the cooker properly and if the plug is inserted firmly into the power outlet. |
| | The light is defective. Take the appliance to your Philips dealer or a service center authorized by Philips. |
| The rice is not cooked. | There may not be enough water. Add more water and cook for a while longer. |
| | You may not have pressed down the control lever. |
| | Make sure that there is no foreign residue on the heating element and the outside of the inner pot before switching the rice cooker on. |
| The cooker does not switch from the cooking mode to the keep warm mode. | The heating element is damaged, or the inner pot is deformed. Take the cooker to your Philips dealer or a service center authorized by Philips. |
| | The temperature control is defective. Take the appliance to your Philips dealer or a service center authorized by Philips. |
| Water spills out of the rice cooker during cooking. | Add rice and water at 1:2 ratio or as you would normally do while cooking on the gas stove. Make sure that you do not exceed the maximum level indicated as this may cause the water to overflow. |
| | |
| Rice smells bad after cooking | Clean the inner pot with some washing detergent and warm water. |
| | After cooking, make sure the steam vent cap, inner lid and inner pot is cleaned thoroughly. |

Warranty and Service

For any information or problem, contact your local Philips dealer or authorized service center. For a list of authorized Philips service centers visit: www.philips.com or contact our consumer care at 1800 102 2929 (Toll free) or 1860 180 1111 (standard call rates apply). This apparatus is covered under warranty against any defect due to defective material or workmanship for TWO YEARS from the date of purchase. Should a defect develop during the period of warranty, PHILIPS ELECTRONICS INDIA LTD. undertakes to repair the apparatus FREE OF CHARGE through the dealer from whom it has been purchased or at any of the Philips authorized Service Centers.

- The warranty is not valid in case:**
1. Apparatus is not used according to user manual.
 2. Defects caused by improper or reckless use.
 3. Defects due to causes beyond control like lightning, abnormal voltage, Acts of God or while In transit to the purchaser’s residence.
 4. Repairs done by persons other than Philips Authorized service center.
 5. Modifications of any nature made in the apparatus.
 6. Tampered serial number.
 7. Incomplete warranty card after purchase.
 8. Product if used for commercial purpose (i.e. other than domestic use).
 9. Usage of parts not recommended by Philips or those made by other manufacturers.

All consumables and parts susceptible to normal wear and tear are not covered under warranty.

Week/S.No. _____
Date of purchase: _____
Dealer's name: _____
Dealer's stamp: _____
Customer's name and address: _____
Model No.: _____
Dealer's signature: _____