

PHILIPS

HR7629



EN User manual

TC 使用手冊



© 2019 Koninklijke Philips N.V.  
All rights reserved.

4240 002 01465

English

## 1 Important

Congratulations on your purchase and welcome to Philips! To fully benefit from the support that Philips offers, register your product at [www.philips.com/welcome](http://www.philips.com/welcome).  
Read this user manual carefully before you use the appliance, and save the user manual for future reference.

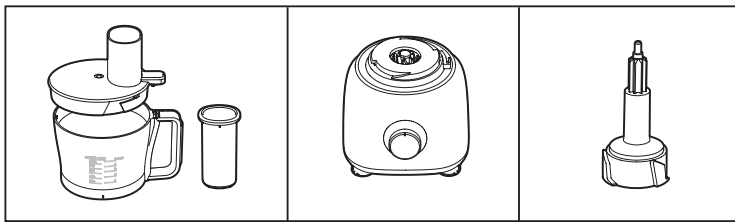
### Danger

- Do not immerse the motor unit in water nor rinse it under the tap.

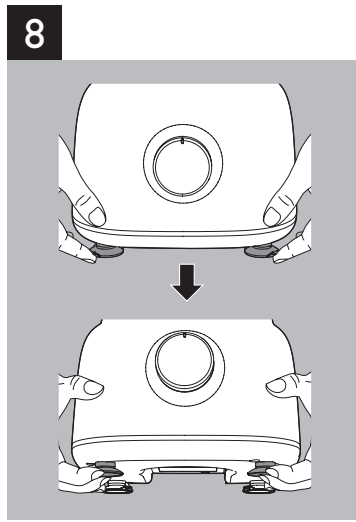
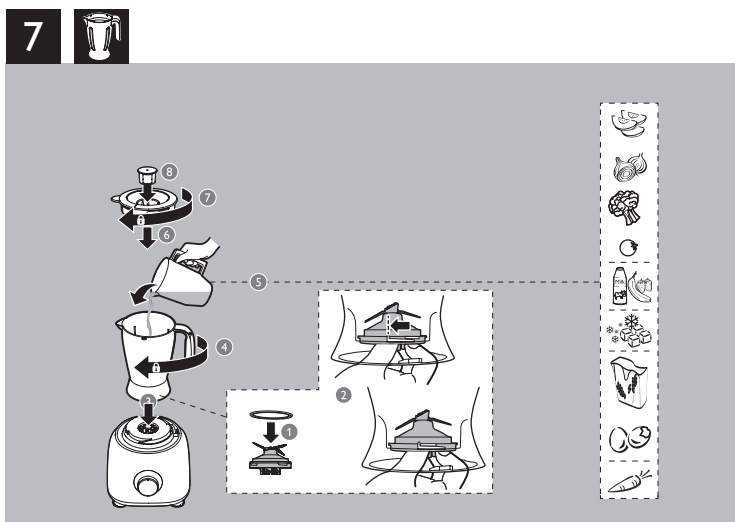
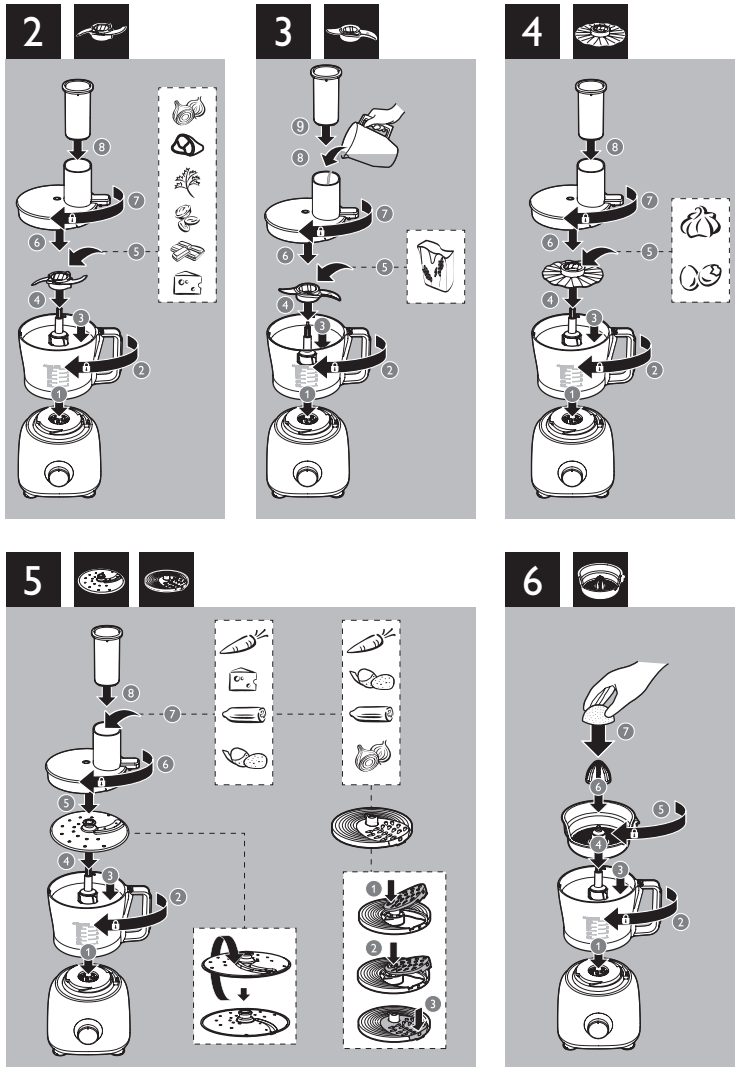
### Warning

- Never use your fingers or an object to push ingredients into the feeding tube while the appliance is running. Only use the pusher.
- Before you connect the appliance to the power, make sure that the voltage indicated on the bottom of the appliance corresponds to the local power voltage.
- Never connect this appliance to a timer switch, to avoid a hazardous situation.
- Do not use the appliance if the power cord, the plug, protecting cover, rotating sieve or any other parts are damaged or has visible cracks.
- If the power cord is damaged, you must have it replaced by Philips, a service center authorized by Philips, or similarly qualified persons to avoid a hazard.
- This appliance shall not be used by children. Keep the appliance and its cord out of reach of children.
- This appliance can be used by persons with reduced physical, sensory or mental capabilities or lack of experience and knowledge if they have been given supervision or instruction concerning use of the appliance in a safe way and if they understand the hazards involved.
- For their safety, do not allow children to play with the appliance.
- Never let the appliance run unattended.
- If food sticks to the wall of the blender jar or bowl, switch off the appliance and unplug it. Then use a spatula to remove the food from the wall.
- Be careful when you are emptying the bowl, handle or clean the discs, the blade units and the juicer sieve. The cutting edges are very sharp.
- Do not touch the blades, especially when the appliance is plugged in. The blades are very sharp.

1		(MAX)	(MAX)	
		5 x 1 sec	500 g	P
		5 x 1 sec	500 g	P/2
		30 sec	50 g	P
		60 sec	250 g	2
		45 sec	250 g	2
		30 sec	200 g	2
		2-3 min	500 g	1
			360 ml	
		60-180 sec	350 ml	1
		60-180 sec	4 pcs	1
		30 sec	500 g	1
		30 sec	500 g	1
		30 sec	2 pcs	1
		30 sec	300 g	1
		30 sec	500 g	1
		30 sec	200 g	1
		30 sec	2 pcs	1
		30 sec	500 g	1
		4 min	1 kg	1
		20 sec	500 g	1
		1 min	1 L	2
		1 min	1 L	2
		1 min	1 L	2
		P x 9	6 x 40 g	P
		3 min	400 g	2
			600 ml	



MAX: 最大 sec: 秒 min: 分 pcs: 個 P: 瞬間加速



### Recycling

Do not throw away the product with the normal household waste at the end of its life, but hand it in at an official collection point for recycling. By doing this, you help to preserve the environment.

## 2 Introduction

Congratulations on your purchase and welcome to Philips! To fully benefit from the support that Philips offers, register your product at [www.philips.com/welcome](http://www.philips.com/welcome).  
This appliance is equipped with a built-in safety lock. You can only switch on the appliance after you correctly assemble the following parts on the motor unit:

- the food processor bowl and its lid, or
- the blender jar and its lid (HR7628, HR7629 only), or
- the citrus press (HR7629 only)

If these parts are assembled correctly, the built-in safety lock is unlocked.

For recipes to use with your food processor, go to [www.philips.com/kitchen](http://www.philips.com/kitchen)

## 3 Food processor

### Warning

- Never use your fingers or an object to push ingredients into the feeding tube while the appliance is running. Only use the pusher.

### Blade unit

Before you start, make sure you assemble according to Fig. 2.

You can use the blade unit to chop, mix, blend, or puree ingredients. You can also use it to mix and blend cake batters.

### Caution

- Do not use the blade unit to chop hard ingredients, like coffee beans, turmeric, nutmeg, and ice cubes, as this may cause the blade to get blunt.

### Note

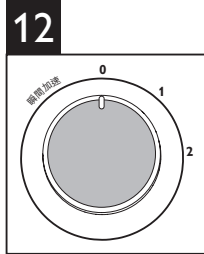
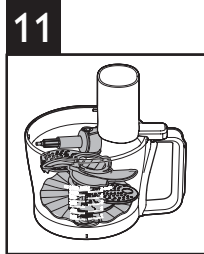
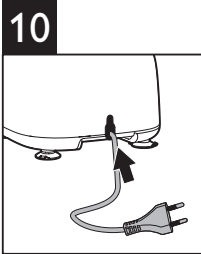
- Do not let the appliance run too long when you chop (hard) cheese or chocolate. Otherwise these ingredients become too hot, start to melt, and turn lumpy.
- Precut large pieces of food into pieces of approx. 3 x 3 x 3 cm.

- Turn the bowl clockwise to fix it on the motor unit, and then put the tool holder in the bowl.  
↳ When the bowl is fixed correctly, you hear a click.
- Put the blade unit on the tool holder.
- Put the ingredients in the bowl.
- Put the lid on the bowl, and then turn the lid clockwise to fix it.  
↳ When the lid is assembled correctly, you hear a click and the lid is fixed to the bowl handle.
- Put the pusher into the feeding tube.
- Connect the power plug to the power supply.
- Check the preparation time, the maximum amount and the speed setting required for the ingredients in Table 1. Turn the knob to the desired speed setting.
- After use, turn the knob to 0, and then unplug the appliance.

### Tip

- When you chop onions, turn the knob to P (瞬間加速) a few times to prevent the onions from becoming too finely chopped.
- How to remove food that sticks to the blade or to the inside of the bowl? 1. Switch off the appliance, and then unplug it. 2. Remove the lid from the bowl. 3. Remove the ingredients from the blade or from the side of the bowl with a spatula.

	✓	✓	✗		✓	✓	✓
	✓	✓	✗		✓	✓	✓
	✓	✓	✓		✓	✓	✗
	✓	✓	✗		✓	✓	✓
	✓	✓	✗		✓	✓	✓
	✓	✓	✗		✗	✗	✓



### Kneading accessory

Before you start, make sure you assemble according to Fig. 3.

You can use the kneading accessory to knead yeast dough for bread and pizzas. You need to adjust the amount of liquid to form the dough according to the humidity and temperature condition.

### Note

- Do not use the kneading accessory to blend cake batters. Use the blade unit for this job.
- Always put the kneading accessory in the bowl before you add the ingredients.

- Turn the bowl clockwise to fix it on the motor unit, and then put the tool holder in the bowl.  
↳ When the bowl is fixed correctly, you hear a click.
- Put the kneading accessory on the tool holder.
- Put the ingredients in the bowl.
- Put the lid on the bowl, and then turn the lid clockwise to fix it.  
↳ When the lid is assembled correctly, you hear a click and the lid is fixed to the bowl handle.
- Put the pusher into the feeding tube.
- Connect the power plug to the power supply.
- Turn the knob to the 1 position.
- Check the preparation time, the maximum amount and the speed setting required for the ingredients in Table 1.
- After use, turn the knob to 0, and then unplug the appliance.

### Discs and Inserts

Before you start, make sure you pick your desired disc from following and assemble according to Fig. 4 and Fig. 5.

- Emulsifying disc
- Insert for fine slicing (HR7627 and HR7628 only)
- Insert for coarse shredding (HR7627 and HR7628 only)
- Insert for granulating (HR7627 and HR7628 only)
- Reversible slicing / shredding disc (coarse) (HR7629 only)

### Caution

- Be careful when you handle the slicing blade of disc. It has a very sharp cutting edge.
- Never use the disc to process hard ingredients, like ice cubes.
- Do not exert too much pressure on the pusher when you press ingredients into the feed tube.

### Note

- Precut large ingredients into chunks that fit in the feeding tube.

- Turn the bowl clockwise to fix it on the motor unit, and then put the tool holder in the bowl.  
↳ When the bowl is fixed correctly, you hear a click.
- Put the disc on the shaft. For inserts (HR7627 and HR7628 only), place an insert in the insert holder as indicated below, then place the insert holder with insert on the shaft.  
① Place the opening of the insert over the shaft of the insert holder.  
② Push the opening of the insert over the projection on the shaft.  
③ Press the insert onto the insert holder until it locks in position with a click.
- Put the lid on the bowl, and then turn the lid clockwise to fix it.  
↳ When the lid is assembled correctly, you hear a click and the lid is fixed to the bowl handle.
- Put the ingredients into the feeding tube with the pusher. Fill the feeding tube evenly for the best results. When you have to process a large amount of ingredients, process small batches and empty the bowl between batches.
- Connect the power plug to the power supply.
- Check the preparation time, the maximum amount and the speed setting required for the ingredients in Table 1. Select the speed that matches the color of the accessory.
- After use, turn the speed selector to 0, and then unplug the appliance.

### Electromagnetic fields (EMF)

This Philips appliance complies with all applicable standards and regulations regarding exposure to electromagnetic fields (EMF). If handled properly and according to the instructions in this user manual, the appliance is safe to use based on scientific evidence available today.



