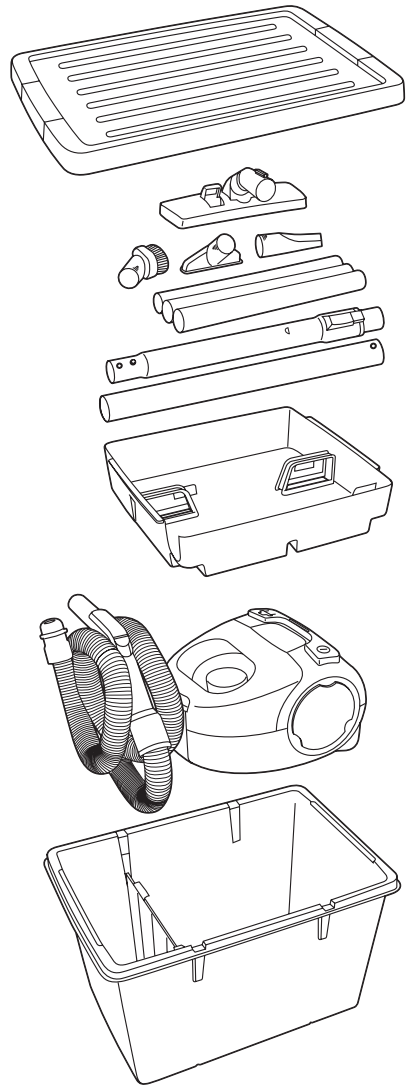
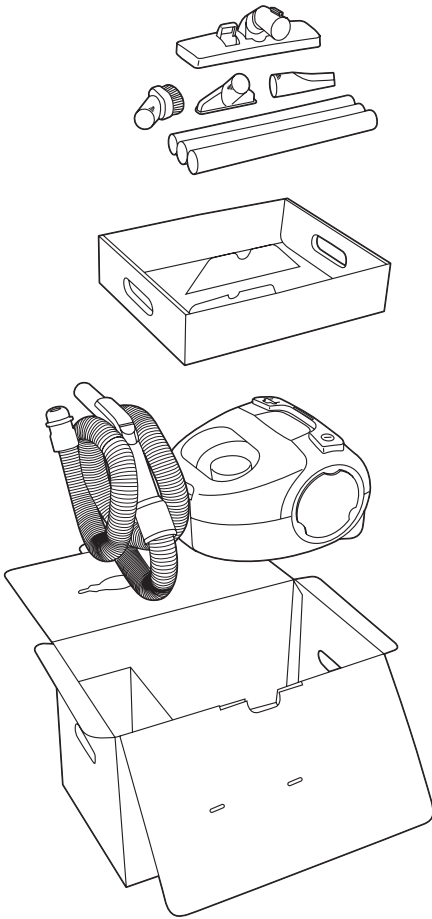


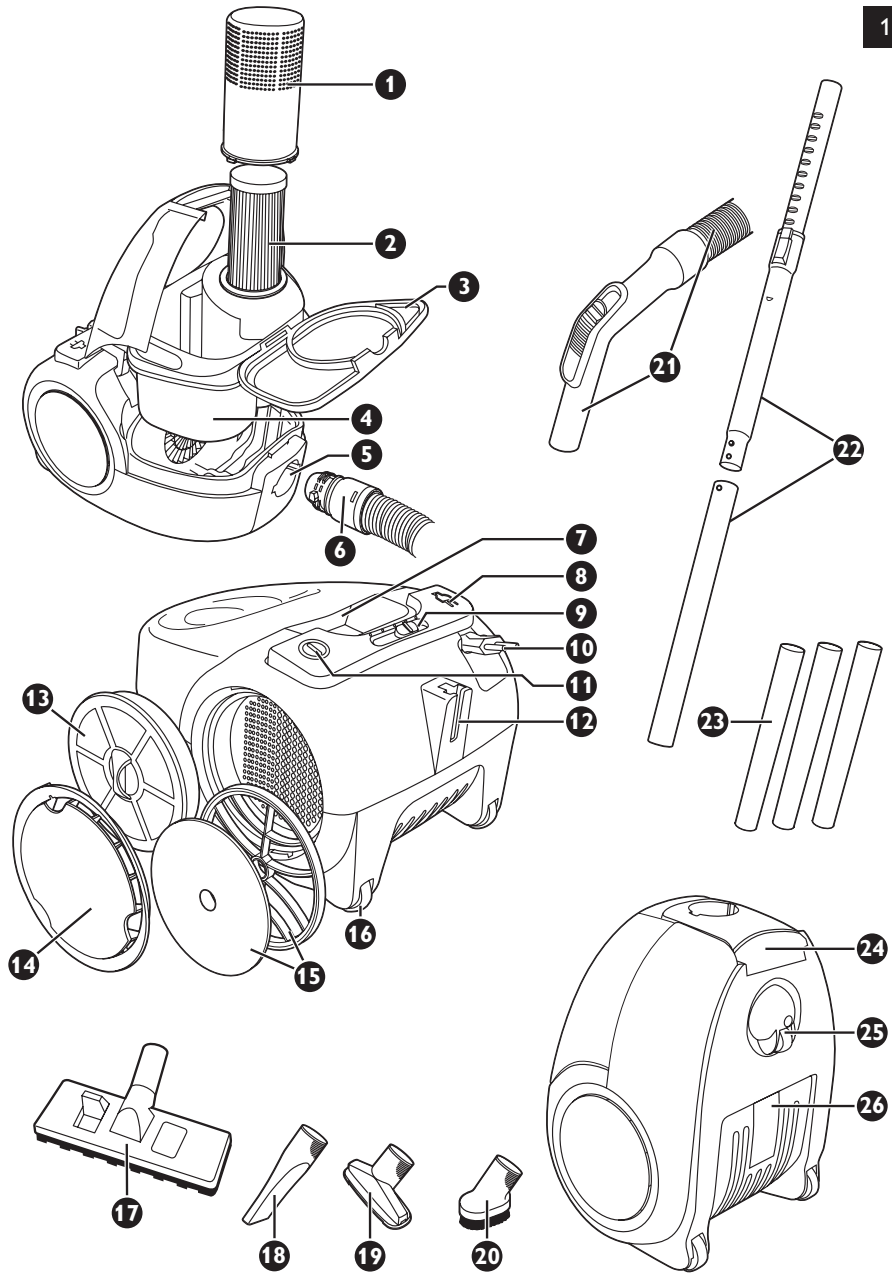
Register your product and get support at  
[www.philips.com/welcome](http://www.philips.com/welcome)

FC8269 - FC8250



**PHILIPS**









**General description (Fig. 1)**

- 1 Filter cylinder case
- 2 Filter cylinder
- 3 Dust container lid
- 4 Dust container
- 5 Hose connection opening
- 6 Hose connector
- 7 Top handle
- 8 Cord rewind button
- 9 Electronic suction power control (specific types only)
- 10 Mains plug
- 11 On/off button
- 12 Parking slot
- 13 HEPA Filter (specific types only)
- 14 Filter grille
- 15 Micro Filter (specific types only)
- 16 Rear wheel
- 17 Combination nozzle
- 18 Crevice nozzle
- 19 Small nozzle (specific types only)
- 20 Brush nozzle (specific types only)
- 21 Hose with handgrip and suction power slide
- 22 Telescopic tube (specific types only)
- 23 Plastic tube parts (specific types only)
- 24 Front handle
- 25 Swivel wheel
- 26 Type plate

**Important**

Read this user manual carefully before you use the appliance and save it for future reference.

- Check if the voltage indicated on the appliance corresponds to the local mains voltage before you connect the appliance.
- Do not use the appliance if the plug, the cord or the appliance itself is damaged.
- If the mains cord of this appliance is damaged, you must have it replaced by Philips, a service centre authorised by Philips or similarly qualified persons in order to avoid a hazard.
- Keep the appliance out of the reach of children.
- Never suck up water or any other liquid. Never suck up flammable substances and do not suck up ashes until they are cold.
- Do not point the hose, the tube or any other accessory at the eyes or ears nor put it in your mouth when it is connected to the vacuum cleaner and the vacuum cleaner is switched on.
- When you use the appliance to vacuum ashes, fine sand, lime, cement dust and similar substances, the pores of the filter cylinder become clogged. If you notice a strong decrease in suction power, clean the filter cylinder.
- Never use the appliance without the filter cylinder. This damages the motor and shortens the life of the appliance.
- The appliance does not work if the dust container is not properly placed.

**Electromagnetic fields (EMF)**

This Philips appliance complies with all standards regarding electromagnetic fields (EMF). If handled properly and according to the instructions in this user manual, the appliance is safe to use based on scientific evidence available today.

## Before first use

You can remove the stickers from the plastic storage container (specific types only).

## Preparing for use

### Hose

- 1 To connect the hose, push it into the appliance (1) and turn it clockwise (2) (Fig. 2).  
To disconnect the hose, turn it anticlockwise and pull it out of the appliance.

### Plastic tube (specific types only)

- 1 To connect the tube parts to each other, insert the narrow section into the wider section and turn a little. (Fig. 3)
- 2 To connect the tube to the handgrip of the hose, insert the narrow section into the wider section and turn a little (Fig. 4).
  - To disconnect the tube or tube parts, pull and turn a little.
  - Use the same method to connect and disconnect the accessories.

### Telescopic tube (specific types only)

- 1 Press the spring-loaded lock button on the telescopic tube part and slide the lock button into the opening in the other tube part.
- 2 Connect the telescopic tube part to the handgrip of the hose. Insert the narrow section into the wider section and turn a little.
  - To disconnect the tube, pull and turn a little.
  - Use the same method to connect and disconnect the accessories.
- 3 Adjust the telescopic tube to the length you find most comfortable during vacuuming. Push the slide on the tube upwards and push the lower tube part downwards or pull it upwards (Fig. 5).

### Combination nozzle

You can use the combination nozzle on carpet (with the brush strips folded in) or on hard floors (with the brush strips folded out).

- To clean hard floors, push the rocker switch on top of the combination nozzle with your foot to make the brush strips come out of the nozzle housing. (Fig. 6)
- To clean carpet, push the rocker switch on the other side to make the brush strips disappear into the housing. (Fig. 7)

### Crevice nozzle, small nozzle and brush nozzle

Your vacuum cleaner comes with one or more of these three accessories.

- 1 Connect the small nozzle, crevice nozzle or brush nozzle directly to the handgrip or to the tube (Fig. 8).
  - 1 Use the small nozzle to clean small areas, e.g. the seats of chairs and sofas.
  - 2 Use the crevice nozzle to clean narrow corners or hard-to-reach places.
  - 3 Use the brush nozzle to clean computers, bookshelves etc.

## Using the appliance

### Vacuum cleaning

- You can carry the vacuum cleaner by the handle at the front or on top of the appliance (Fig. 9).

- 1 Pull the cord out of the appliance and insert the mains plug into the wall socket.

- 2** Press the on/off button on top of the appliance with your foot to switch on the appliance.
- If you want to pause for a moment, insert the ridge on the nozzle into the parking slot to park the tube in a convenient position (Fig. 10).

---

### Adjusting suction power

---

You can adjust the suction power with:

- the suction power slide on the handgrip or (Fig. 11)
- the electronic suction power control on the vacuum cleaner (specific types only) (Fig. 12).

## Replacement

### Replacing filters

---

**Always unplug the appliance before you replace a filter.**

Your vacuum cleaner is equipped with either a Micro Filter or a HEPA Filter:

#### Micro Filter (specific types only)

Replace the Micro Filter every 6 months.

- 1** To remove the filter grille, turn it anticlockwise (1) and pull it out (2) (Fig. 13).
- 2** Remove the filter holder from the grille.
- 3** Remove the old filter from the filter grille.
- 4** Put the new filter on the grille and lock it into place with the filter support (Fig. 14).
- 5** Put the filter grille back into the appliance (1) and turn it clockwise (2) (Fig. 15).

#### HEPA Filter (specific types only)

Replace the HEPA Filter every 6 months.

- 1** To remove the filter grille, turn it anticlockwise (1) and pull it out (2) (Fig. 13).
- 2** Remove the HEPA Filter (Fig. 16).
- 3** Insert a new HEPA Filter.
- 4** Put the filter grille back into the appliance (1) and turn it clockwise (2) (Fig. 15).

## Cleaning

**Always switch off and unplug the appliance before you remove and clean any parts.**

Do not clean any part of the vacuum cleaner in the dishwasher. If necessary, clean the parts with a moist cloth.

- 1** Clean the appliance with a damp cloth.

### Dust container and filter cylinder

---

For optimal performance, always empty the dust container after use and clean the filter cylinder regularly.

- 1** Disconnect the hose from the appliance.
- 2** Open the cover (Fig. 17).
- 3** Remove the dust container from the appliance (Fig. 18).
- 4** Remove the lid of the dust container. (Fig. 19)
- 5** To remove the filter cylinder case, turn it anticlockwise and lift it out of the dust container. (Fig. 20)



- 6** Remove the filter cylinder from the dust container (Fig. 21).
- 7** To clean the filter cylinder, tap against the side of a dustbin (Fig. 22).
- 8** Empty the dust container into a dustbin (Fig. 23).
- 9** Put the filter cylinder back into the dust container (Fig. 24).
- 10** Put the filter cylinder case back onto the filter cylinder (1) and turn it clockwise to fix it (2) (Fig. 25).
- 11** Reattach the lid of the dust container (1) and close it ('click') (2) (Fig. 26).
- 12** Put the dust container back into the appliance (Fig. 27).
- 13** Close the cover ('click') (Fig. 28).

### Storage (Fig. 29)

- 1** Switch off the appliance and remove the mains plug from the wall socket.
- 2** Press the cord rewind button to rewind the cord.
- 3** You can store the appliance in two ways: (Fig. 10)
  - Insert the ridge on the nozzle into the parking slot to park the tube and then put the appliance away.
  - Store the appliance and its accessories in the storage box supplied.
- 4** To store the appliance, look at the storage figure at the beginning of this user manual. This figure shows you how to store the appliance and its accessories in the box or plastic storage container.

### Accessories

If you have any difficulties obtaining filters or other accessories for this appliance, please contact the Philips Customer Care Centre in your country or consult the worldwide guarantee leaflet.

### Ordering filters

- HEPA Filters are available under type number FC8029.
- Micro Filters are available under service number 4322 000 38900.
- Filter cylinders are available under type number FC8028.

### Environment

- Do not throw away the appliance with the normal household waste at the end of its life, but hand it in at an official collection point for recycling. By doing this, you help to preserve the environment (Fig. 30).

### Guarantee & service

If you need information or if you have a problem, please visit the Philips website at [www.philips.com](http://www.philips.com) or contact the Philips Customer Care Centre in your country (you find its phone number in the worldwide guarantee leaflet). If there is no Customer Care Centre in your country, go to your local Philips dealer or contact the Service Department of Philips Domestic Appliances and Personal Care BV.

The storage box is not covered by the terms of the international guarantee.

## Troubleshooting

### **1** The suction power is insufficient

- Perhaps the dust container is full.

If necessary, empty the dust container.

- Perhaps the filters need to be cleaned or replaced.

If necessary, clean or replace the filters.

- Perhaps the suction power slide on the handgrip is open.

Close the slide.

- Perhaps the electronic suction power control (specific types only) has been set to a low setting.

Set the control to a higher setting.

- Perhaps the nozzle, tube or hose is blocked up. (Fig. 31)

- To remove the obstruction, disconnect the blocked-up item and connect it (as far as possible) the other way round. Switch on the vacuum cleaner to force the air through the blocked-up item in opposite direction.

## 一般说明 (图 1)

- 1 滤芯罩
- 2 滤芯
- 3 集尘盒盖
- 4 集尘盒
- 5 软管连接孔
- 6 软管接口
- 7 顶部把手
- 8 电源线回卷按钮
- 9 通过电子吸力控制旋钮即可调整吸力（仅限于特定机型）
- 10 电源插头
- 11 开/关按钮
- 12 摆放固定槽
- 13 HEPA 滤网（仅限特定型号）
- 14 过滤器栅格
- 15 微型滤网（仅限于特殊型号）
- 16 后轮
- 17 组合吸嘴
- 18 缝隙吸嘴
- 19 小号吸嘴（仅限于特定机型）
- 20 毛刷吸嘴（仅限于特定机型）
- 21 带握把和吸力控制滑块的软管
- 22 伸缩管（仅限于特定机型）
- 23 塑料硬管两端（仅限于特定机型）
- 24 前方握把
- 25 转轮
- 26 型号牌

## 注意事项

使用产品之前，请仔细阅读本用户手册，并妥善保管以供日后参考。

- 在将产品连接电源之前，请先检查产品所标电压与当地的供电电压是否相符。
- 如果插头、电源线或产品本身受损，请勿再使用本产品。
- 如果产品的电源线损坏，为避免危险，必须由制造厂或其维修部或厂方认可的专职人员来更换。
- 请将产品放置在儿童接触不到的地方。
- 切勿吸取水或其它液体。切勿吸取易燃物质，并且不要吸取未冷却的灰烬。
- 当连接到真空吸尘器并且真空吸尘器已打开时，请勿将软管、硬管或任何其它附件指向眼睛或耳朵，也不要放在口中。
- 在使用本品吸收灰尘、细沙、石灰、水泥灰和类似的物质时，滤芯孔将被堵塞。如果您注意到吸力显著下降，则可以清洁滤芯。

## 12 简体中文

- 切勿在没有滤芯的情况下使用本产品。这会损坏马达并缩短产品的使用寿命。
- 如果集尘盒没有正确放置，则产品将无法运行。

### 电磁场 (EMF)

这款飞利浦产品符合关于电磁场 (EMF) 的相关标准。据目前的科学证明，如果正确使用并按照本用户手册中的说明进行操作，本产品是安全的。

### 初次使用之前

您可以撕掉塑料存放箱上的不干胶标签（仅限于特定机型）。

### 使用准备

#### 软管

- 1 要将软管连接，将软管推入吸尘器 (1) 并以顺时针方向旋转即可 (2)。(图 2)
- 要将软管从吸尘器上拆下，请将管端逆时针方向转动，并拉出软管。

#### 塑料硬管（仅限于特定机型）

- 1 要将硬管的两端相互连接，请将窄的部分插入宽的部分，同时稍加旋转。(图 3)
  - 2 要将硬管与软管的握把连接起来，应将窄的部分插入宽的部分并且稍微转一下。(图 4)
- 要断开硬管或硬管两端，请向外拉并且稍微转一下。
  - 请通过同样的方法来连接及拆卸吸嘴。

#### 伸缩管（仅限于特定机型）

- 1 按伸缩管部件上的弹簧式锁定钮，将锁定钮滑入另一个管部件的开口。
  - 2 将伸缩管与软管的握把连接起来。将窄的部分插入宽的部分并且稍微转一下。
- 要断开硬管，请向外拉并且稍微转一下。
  - 请通过同样的方法来连接及拆卸吸嘴。
- 3 将伸缩管调节至在吸尘中感觉最舒适的长度。向上推硬管上的滑块，并且向下推或向上拉下侧硬管。(图 5)

#### 组合吸嘴

您可以在地毯（刷条内翻）或硬地板（刷条外翻）上使用组合吸嘴。

- 要清洁硬地板，请用脚推动组合吸嘴上的刷毛转换块，让刷条从吸嘴外壳中伸出来。(图 6)
- 要清洁地毯，请用脚按动转换块的另一面，使刷条缩入吸嘴中。(图 7)

#### 缝隙吸嘴、小号吸嘴和毛刷吸嘴

吸尘器至少随附这三个附件中的一个。

- 1 把小号吸嘴、缝隙工具或毛刷吸嘴直接连接到握把或硬管上使用。(图 8)
- 1 使用小号吸嘴清洁较小的区域，例如椅子和沙发的座位。
  - 2 使用缝隙吸嘴清洁狭窄角落或难以触及的部位。
  - 3 使用毛刷吸嘴清洁电脑、书架等等。

## 使用本产品

### 使用吸尘器

- 您可以手握前方或顶部的把手提起吸尘器。(图 9)

**1** 将电源线从产品中拉出，插入电源插座。

**2** 用脚按下产品上的 on/off (开/关) 按钮来开启电源。

- 如要暂停使用吸尘器，可通过将吸嘴上的夹片插入摆放固定槽以将硬管放妥。(图 10)

### 调整吸力

您可以使用下列部件调节吸力：

- 握把上的吸力滑块或 (图 11)

- 吸尘器上的电子吸力控制旋钮（仅限于特定机型）。(图 12)

## 更换

### 更换过滤网

#### 更换过滤网前，切记拔下电器插头。

吸尘器配有微型滤网或 HEPA 滤网。

**微型滤网（仅限于特殊型号）**

每 6 个月更换一次微型滤网。

**1** 要取出滤网栅格，请逆时针方向转动 (1) 并拉出栅格 (2)。(图 13)

**2** 从栅格中取出滤网架。

**3** 从滤网栅格上取下旧的滤网。

**4** 将新的滤网放在栅格上并使用滤网支架将其锁定到位。(图 14)

**5** 将滤网栅格重新放入吸尘器 (1) 并顺时针转动 (2)。(图 15)

**HEPA 滤网（仅限特定型号）**

每 6 个月更换一次 HEPA 滤网。

**1** 要取出滤网栅格，请逆时针方向转动 (1) 并拉出栅格 (2)。(图 13)

**2** 取出 HEPA 滤网。(图 16)

**3** 插入新的 HEPA 滤网。

**4** 将滤网栅格重新放入吸尘器 (1) 并顺时针转动 (2)。(图 15)

## 清洁

在取出和清洁任何部件之前，应始终关闭产品并断开电源。

请勿将吸尘器的任何部件放入洗碗机中清洗。如有必要，可用湿布清洁部件。

**1** 用湿布擦拭本产品。

### 集尘盒和滤芯

要获得最佳性能，应始终在使用后清空集尘盒以及定期清洁滤芯。

## 14 简体中文

- 1 从产品中拔出软管。
- 2 打开上盖。(图 17)
- 3 从吸尘器上卸下集尘盒。(图 18)
- 4 取下集尘盒的盒盖。(图 19)
- 5 要取下滤芯罩,请逆时针旋转并将滤芯罩从集尘盒取出。(图 20)
- 6 从集尘盒中取出滤芯。(图 21)
- 7 要清洁滤芯,可以将滤芯在垃圾箱的一侧轻敲。(图 22)
- 8 将集尘盒倒空至垃圾箱中。(图 23)
- 9 将滤芯放回集尘盒中。(图 24)
- 10 将滤芯罩重新放到滤芯上 (1) 并且顺时针转动以固定 (2)。(图 25)
- 11 重新安放集尘盒盖 (1) 并将其锁闭 (听到咔哒声) (2)。(图 26)
- 12 把集尘盒放回吸尘器内。(图 27)
- 13 将机罩关闭 (听到咔哒声)。(图 28)

### 存放 (图 29)

- 1 关闭吸尘器的电源,从插座中拔下电源插头。
- 2 按下电源线回卷按钮将电源线回卷到吸尘器中。
- 3 有两种方法存放本产品:(图 10)
  - 将吸嘴上的夹片插入摆放固定槽,以将硬管放妥然后存放本产品。
  - 可以将产品及其附件存放在随附的储藏箱中。
- 4 要储存本产品,请查看用户手册开头的储存示意图。该图说明了如何在储藏箱或塑料存放箱中存放本产品及其附件。

### 附件

如果您购买本产品的滤网或其他附件有困难,请与您所在国家的飞利浦客户服务中心联系,或参阅全球保修卡。

### 订购滤网

- 可提供适用于 FC8029 型号的 HEPA 滤网。
- 微型滤网的订购号码为 4322 000 38900。
- 可提供适用于 FC8028 型号的滤芯。

### 环保

- 弃置产品时,请不要将其与一般生活垃圾堆放在一起;应将其交给官方指定的回收中心。这样做有利于环保。(图 30)

### 保修与服务

如果您需要详细信息或有任何问题,请浏览飞利浦网站,地址为 [www.philips.com](http://www.philips.com)。您也可以与贵国的飞利浦顾客服务中心联系(您可以从全球保修卡中找到电话号码)。如果贵国没有飞利浦顾客服务中心,请与当地的飞利浦经销商或与飞利浦家庭小电器的维修中心联系。

储藏箱不包括在国际保修条款中。

## 故障种类和处理方法

### 1 吸力不够

- 可能集尘盒已满。

如有必要，应清空集尘盒。

- 可能需要清洁或更换滤网。

如有必要，应清洁或更换滤网。

- 可能握把上的吸力滑块已打开。

关闭滑块。

- 可能电子吸力控制旋钮（仅限于特定机型）已设置为较低的档。

将控制旋钮设置为更高的档。

- 可能吸嘴、硬管或软管阻塞。(图 31)

- 要清除阻塞物，请将阻塞的部分拆下，并将它以相反方向连接（尽可能离的远一些）。打开吸尘器的电源，强迫气流反方向通过阻塞的部位。

# PHILIPS

产品 : 飞利浦家用  
真空卧式吸尘器  
型号 : FC8254/FC8260  
FC8262/FC8264  
额定电压 : 220V~  
额定频率 : 50Hz  
额定输入功率: 1200W-适用于FC8254  
1400W-适用于FC8260/  
FC8262/FC8264  
产地 : 中国  
生产日期 : 请见产品底部



珠海经济特区飞利浦家庭电器有限公司  
中国珠海市三灶镇琴石工业区  
邮政编码: 519040

全国顾客服务热线: 4008 800 008

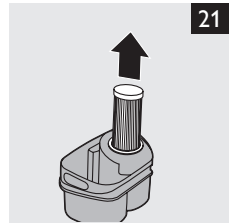
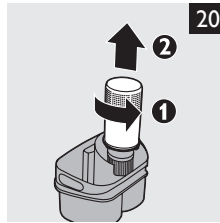
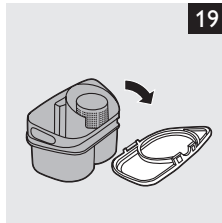
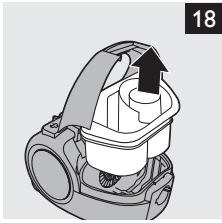
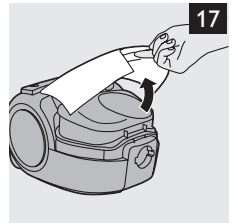
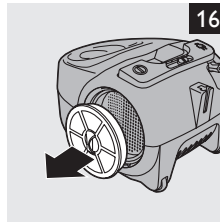
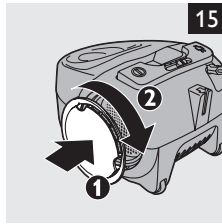
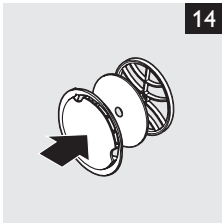
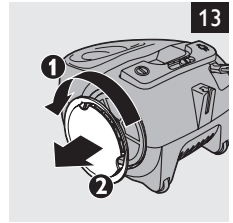
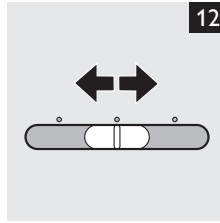
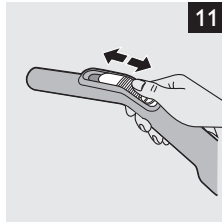
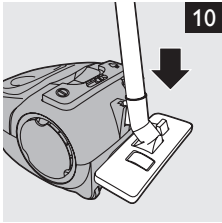
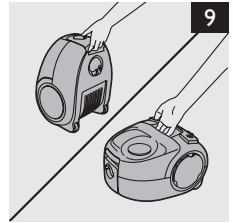
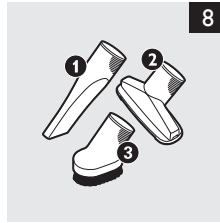
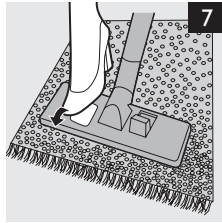
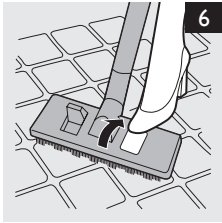
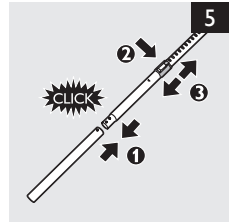
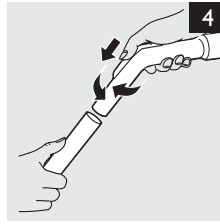
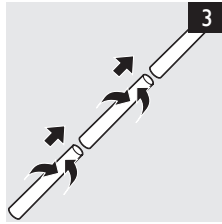
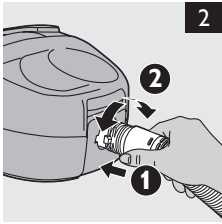
本产品根据国标 GB4706.1-2005, GB4706.7-2004,  
GB4343.1-2003及GB17625.1-2003制造

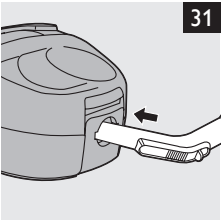
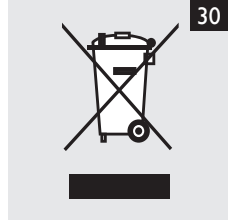
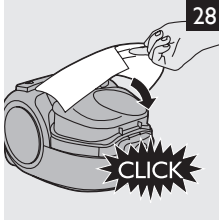
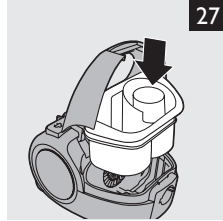
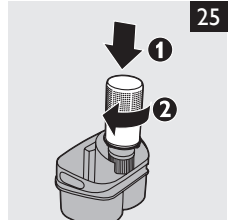
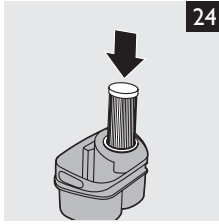
请妥善保管本使用说明书

发行日期: 2009/05/20



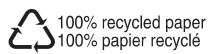








[www.philips.com](http://www.philips.com)



4222.003.3346.5