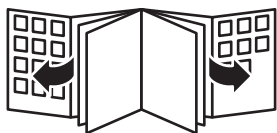


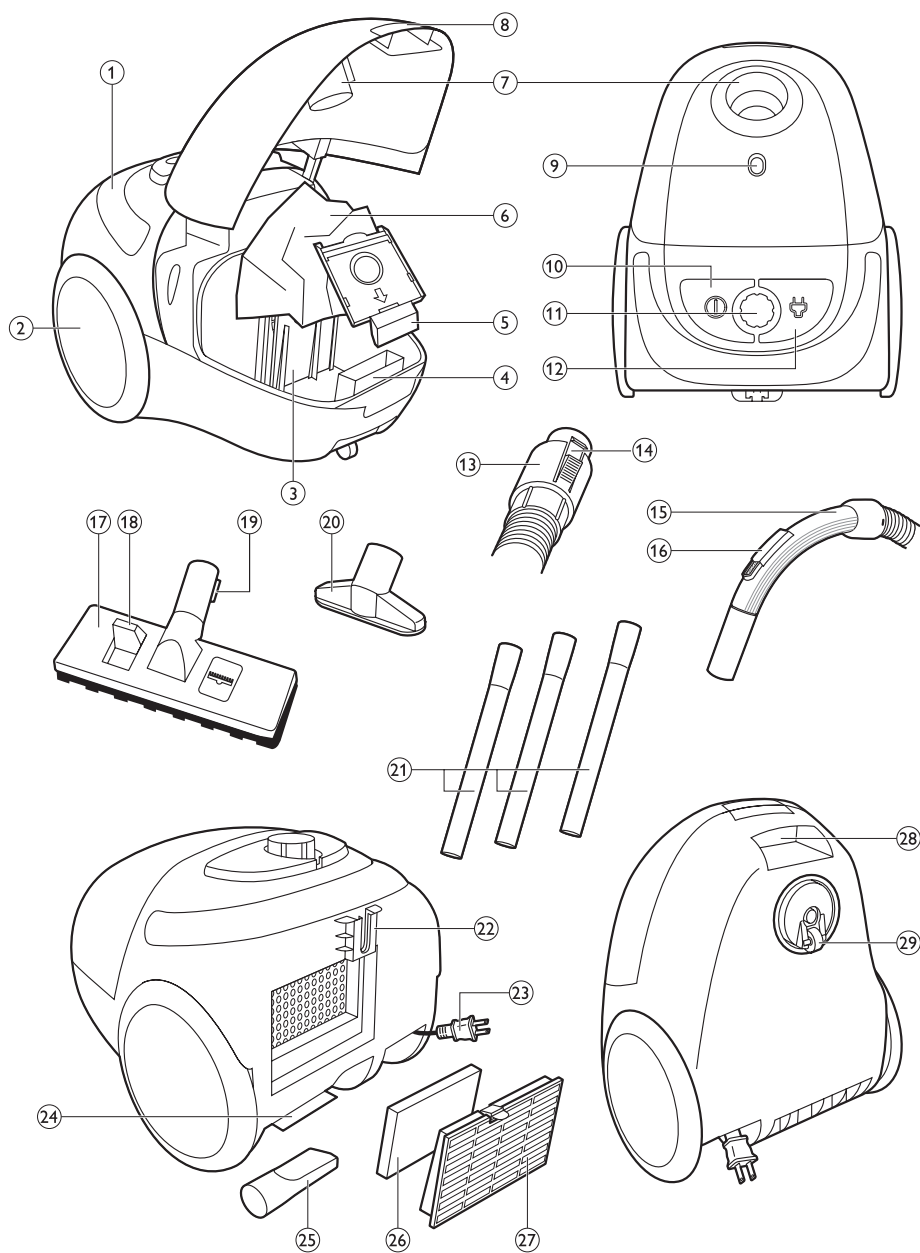
Register your product and get support at
www.philips.com/welcome

FC8089, FC8088



PHILIPS





Introduction

Congratulations on your purchase and welcome to Philips! To fully benefit from the support that Philips offers, register your product at www.philips.com/welcome.

General description (Fig. 1)

- 1 Carrying handle
- 2 Rear wheel
- 3 Motor protection filter
- 4 Dustbag holder
- 5 Dustbag holder fixation tab
- 6 Reusable dustbag
- 7 Hose connection opening
- 8 Release tab to open dustbag compartment
- 9 Dustbag-full indicator
- 10 On/off button
- 11 Electronic suction power control (FC8089 only)
- 12 Cord rewind button
- 13 Hose connector
- 14 Hose button
- 15 Handgrip
- 16 Suction power slide
- 17 Combination nozzle
- 18 Rocker switch
- 19 Storage/parking ridge
- 20 Small nozzle (FC8089 only)
- 21 3 tube parts
- 22 Parking slot
- 23 Mains cord with plug
- 24 Crevice tool holder
- 25 Crevice tool
- 26 Exhaust filter
- 27 Filter grille
- 28 Carrying grip
- 29 Swivel wheel

Important

Read this user manual carefully before you use the appliance and save it for future reference.

Danger

- Never suck up water or any other liquid. Never suck up flammable substances and do not suck up ashes until they are cold.

Warning

- Check if the voltage indicated on the appliance corresponds to the local mains voltage before you connect the appliance.
- Do not use the appliance if the plug, the mains cord or the appliance itself is damaged.
- If the mains cord is damaged, you must have it replaced by Philips, a service centre authorised by Philips or similarly qualified persons in order to avoid a hazard.
- This appliance is not intended for use by persons (including children) with reduced physical, sensory or mental capabilities, or lack of experience and knowledge, unless they have been given supervision or instruction concerning use of the appliance by a person responsible for their safety.

- Children should be supervised to ensure that they do not play with the appliance.
- Do not point the hose, the tube or any other accessory at the eyes or ears nor put it in your mouth when it is connected to the vacuum cleaner and the vacuum cleaner is switched on.

Caution

- When you use the vacuum cleaner to vacuum ashes, fine sand, lime, cement dust and similar substances, the pores of the dustbag become clogged. As a result, the dustbag-full indicator will indicate that the dustbag is full. Empty the reusable dustbag, even if it is not full yet (see chapter 'Emptying the reusable dustbag').
- Never use the appliance without the motor protection filter. This damages the motor and shortens the life of the appliance.
- Do not suck up large objects as this may cause the air passage in the tube or hose to become obstructed.
- Only use the reusable dustbag that is supplied with the appliance. If you use another dustbag, this could lead to motor damage or shorten the lifetime of the appliance.

Electromagnetic fields (EMF)

- This Philips appliance complies with all standards regarding electromagnetic fields (EMF). If handled properly and according to the instructions in this user manual, the appliance is safe to use based on scientific evidence available today.

Preparing for use

Hose

- 1 To connect the hose, press the two hose buttons (1) and push the hose into the opening (2) ('click') (Fig. 2).
- 2 To disconnect the hose, press the two hose buttons again (1) and pull the hose out of the appliance (2) ('click') (Fig. 3).

Tube

- 1 To connect the tube parts to each other, insert the narrow section into the wider section and turn it a little. (Fig. 4)
- 2 To connect the tube to the handgrip of the hose, insert the handgrip into the tube and turn it a little (Fig. 5).
 - To disconnect the tube or tube parts, pull and turn a little.
 - Connect and disconnect the accessories in the same way.

Combination nozzle

The combination nozzle enables you to clean the floor efficiently. You can use the combination nozzle on carpet with the brush strips folded in or on hard floors (for instance for tiled, parquetered, laminated and linoleum flooring) with the brush strips folded out.

- 1 To connect the combination nozzle to the tube, insert the tube into the combination nozzle and turn it a little (Fig. 6).
- 2 Push the rocker switch on top of the combination nozzle with your foot to make the brush strip for cleaning hard floors come out of the nozzle housing (Fig. 7).
- 3 Push the rocker switch on the other side to make the brush strip disappear into the nozzle housing (Fig. 8).

Crevice tool

- You can use the crevice tool to clean hard-to-reach places quickly and conveniently.
- You find the crevice tool in the crevice tool compartment of the appliance. (Fig. 9)
- You can connect the crevice tool to the tube or directly to the handgrip of the hose.

1 To connect the crevice tool, insert the tube or handgrip while turning it a little.

Small nozzle (FC8089)

- You can use the small nozzle to clean small areas, e.g. the seats of chairs and sofas (Fig. 10).
- You can connect the small nozzle to the tube or directly to the handgrip of the hose.

1 To connect the small nozzle, insert the tube or handgrip while turning it a little.

Using the appliance

Vacuuming

1 Pull the mains cord out of the appliance and put the plug in the wall socket.

2 Press the on/off button on top of the appliance with your foot to switch on the appliance (Fig. 11).

Adjusting suction power

During vacuum cleaning, you can adjust the suction power with:

- the slide on the handgrip of the hose, or (Fig. 12)
- the electronic suction power control on the vacuum cleaner (FC8089 only) (Fig. 13).

Note: Use maximum suction power to vacuum very dirty carpets and hard floors. Use minimum suction power to vacuum curtains, tablecloths etc.

Parking the tube

- If you want to pause for a moment, insert the ridge on the combination nozzle into the parking slot to park the tube in a convenient position (Fig. 14).

Storage

1 Switch off the appliance and remove the mains plug from the wall socket.

2 Press the cord rewind button to rewind the mains cord (Fig. 15).

3 After use, store the crevice tool in its holder (Fig. 9).

4 Insert the ridge on the combination nozzle into the parking slot (Fig. 14).

Emptying the reusable dustbag

Always unplug the appliance before you open the cover of the dustbag compartment to empty the reusable dustbag.

Note: Only use the reusable dustbag that is supplied with the appliance. If you use another dustbag, this could lead to motor damage or shorten the lifetime of the appliance.

- Empty the dustbag as soon as the dustbag-full indicator remains yellow, also when the nozzle is not placed on the floor (Fig. 16).

1 Place your fingers under the release tab (1) and open the cover of the dustbag compartment (2) (Fig. 17).

2 Lift the dustbag holder with the dustbag out of the dustbag compartment (Fig. 18).

- 3** Slide the front of the dustbag out of the dustbag holder (Fig. 19).
- 4** Hold the dustbag over a dustbin and slide the clip off the dustbag sideways to empty the dustbag (Fig. 20).
- 5** To close the dustbag, slide the clip back onto the bottom edge of the dustbag (Fig. 21).
- 6** Slide the front of the empty dustbag into the two grooves of the dustbag holder as far as possible. (Fig. 22)
- 7** Place the dustbag holder fixation tab between the two ridges inside the dustbag compartment (Fig. 23).

Note: Make sure the arrow on the dustbag front points downwards.

- 8** Push the dustbag holder down until the dustbag holder fixation tab locks in position.

Note: The appliance does not work if the dustbag is not placed properly.

- 9** Close the cover of the dustbag compartment (Fig. 24).

Note: You cannot close the cover of the dustbag compartment if the dustbag holder with the reusable dustbag has not been inserted.

Tip: If you want to clean the reusable dustbag thoroughly, you can clean it in water. Make sure you let the dustbag dry completely before you place it back into the appliance.

Cleaning the filters

Exhaust filter

Clean the exhaust filter every three months.

- 1** Pull at the grip on the filter grille (1) and remove the filter grille from the appliance (2) (Fig. 25).
- 2** Take out the exhaust filter. Shake the dirt out of the filter over a dustbin (Fig. 26).

Tip: To clean the exhaust filter thoroughly, you can also clean it in water. Make sure you let the filter dry completely before you place it back into the appliance.

- 3** Put back the exhaust filter (Fig. 27).
- 4** To reattach the filter grille to the vacuum cleaner, align the two ridges of the grille with the two slots on the vacuum cleaner and close the grille ('click') (Fig. 28).

Motor protection filter

Never use the appliance without the motor protection filter. This damages the motor and shortens the life of the appliance.

Clean the motor protection filter every time you clean the reusable dustbag.

- 1** Take the motor protection filter out of the appliance.
- 2** Clean the filter by shaking the dirt out of it over a dustbin.

Tip: To clean the motor protection filter thoroughly, you can also clean it in water. Make sure you let the filter dry completely before you place it back into the appliance.

Replacement

Replace the reusable dustbag if it can no longer be cleaned properly. Reuseable dustbags are available under service number 4322 004 93641.
Only use the reusable dustbag that is supplied with the appliance.

Environment

- Do not throw away the appliance with the normal household waste at the end of its life, but hand it in at an official collection point for recycling. By doing this, you help to preserve the environment (Fig. 29).

Guarantee and service

If you need service or information or if you have a problem, please visit the Philips website at www.philips.com or contact the Philips Consumer Care Centre in your country. You find its phone number in the worldwide guarantee leaflet. If there is no Consumer Care Centre in your country, go to your local Philips dealer.

Troubleshooting

Problem	Possible cause	Solution
The suction power is insufficient.	The suction power slide on the handgrip is open.	Close the suction power slide on the handgrip.
	FC8089 only: The electronic suction power control is set to a low setting.	Set the electronic suction power control to a higher setting.
	The dustbag is full.	Empty the reusable dustbag.
	The motor protection filter and/or the exhaust filter is dirty.	Shake these filters over a dustbin to clean them.
	The nozzle, tube or hose is blocked up.	To remove the obstruction, disconnect the blocked-up item and connect it (as far as possible) the other way around. Switch on the vacuum cleaner to suck the obstruction out of the blocked-up item.

簡介

恭喜您購買本產品並歡迎加入飛利浦！請於 www.philips.com/welcome 註冊您的產品，以善用飛利浦提供的支援。

一般說明 (圖 1)

- 1 攜帶握把
- 2 後輪
- 3 馬達防護濾網
- 4 集塵袋支托架
- 5 集塵袋支托架固定拉片
- 6 可重複使用的集塵袋
- 7 軟管接口開口
- 8 釋放拉片以打開集塵室
- 9 集塵袋已滿指示燈
- 10 開/關按鈕
- 11 電子吸力控制鈕 (限 FC8089)
- 12 收線鈕
- 13 軟管接口
- 14 軟管按鈕
- 15 握把
- 16 吸力調節撥鈕
- 17 兩用吸頭
- 18 搖動開關
- 19 收藏/安置突出物
- 20 小吸頭 (限 FC8089)
- 21 3 個吸塵管零件
- 22 安置槽
- 23 電源線附插頭
- 24 縫隙吸頭固定座
- 25 縫隙吸頭
- 26 排氣濾網
- 27 濾網柵口
- 28 提把
- 29 轉輪

重要事項

在使用本產品前，請先仔細閱讀本使用手冊，並保留使用手冊以供日後參考。

危險

- 請勿用來吸水或任何其它液體。請勿吸取易燃性物質，且請勿吸取未完全冷卻的灰燼。

警示

- 在您連接電源之前，請檢查本地的電源電壓是否與產品所標示的電壓相符。
- 當插頭、電線或產品本身受損時，請勿使用產品。
- 如果電線損壞，則必須交由飛利浦、飛利浦授權之服務中心，或是具備相同資格的技師更換，以免發生危險。
- 基於安全考慮，在缺乏監督及適當指示之下，本產品不適用於孩童及任何身體、知覺、或心理功能障礙者，或缺乏使用經驗及知識者。
- 請勿讓孩童使用本產品或將本產品當成玩具。
- 若已連接至吸塵器且吸塵器電源為開啟時，請勿將軟管、吸塵管或其他配件指向眼睛或耳朵，也請勿將其放入口中。

12 繁體中文

警告

- 使用吸塵器來清除灰燼、細沙、石灰、水泥灰塵與類似物質時，集塵袋孔會逐漸阻塞，使得集塵袋已滿指示燈顯示集塵袋已滿。此時即便可重複使用的集塵袋並未全滿，也請將其清空 (請參閱「清空可重複使用的集塵袋」單元)。
- 請勿在未安裝馬達防護濾網的時候使用本產品，否則可能會損壞馬達並縮短產品壽命。
- 吸除大型物體可能會造成吸塵管或軟管內的通風阻塞。
- 請只使用本產品隨附的可重複使用集塵袋。如果您使用其它集塵袋，可能導致馬達損害或縮短產品壽命。

電磁波 (EMF)

- 本飛利浦產品符合電磁波 (Electromagnetic fields, EMF) 所有相關標準。只要使用方式正確並依照本使用手冊之說明進行操作，根據現有的科學研究資料，使用本產品並無安全顧慮。

使用前準備

軟管

- 1 若要連接軟管，請按下兩個軟管按鈕 (1) 並將軟管推入開口 (2) (會聽見「喀噠」一聲)。 (圖 2)
- 2 若要拆下軟管，請再按下兩個軟管按鈕 (1)，再將軟管自產品中拉出 (2) (會聽見「喀噠」一聲)。 (圖 3)

吸塵管

- 1 將吸塵管較窄的一端插入較寬的一端彼此相接，連接時將其稍微轉動。 (圖 4)
 - 2 將握把插入吸塵管，以連接吸塵管到軟管的握把上，連接時將其稍微轉動。 (圖 5)
- 若要卸除吸塵管或吸塵管零件，請稍微轉動並將其拉開。
 - 可使用相同方法連接或卸除配件。

兩用吸頭

兩用吸頭能有效清潔地板。將毛刷條收起時，可以清潔地毯；將毛刷條翻出時，可以清潔硬質地板 (如磁磚、硬地板、夾板、油氈等材質的地板)。

- 1 將吸塵管插入兩用吸頭，以連接兩用吸頭到吸塵管上，連接時將其稍微轉動。 (圖 6)
- 2 清潔硬質地板時，請以腳推壓兩用吸頭頂端的開關，將毛刷條從吸頭外殼推出。 (圖 7)
- 3 將吸頭上的開關朝另一側壓下，毛刷條即收進吸頭外殼內。 (圖 8)

縫隙吸頭

- 您可以使用縫隙吸頭快速且方便地清潔死角。
- 您會在產品的縫隙吸頭室中找到縫隙吸頭。 (圖 9)
- 您可以將縫隙吸頭連接至吸塵管上，也可以直接連接到軟管的握把上。

- 1 要連接縫隙吸頭時，請將其插入吸塵管或握把，連接時將其稍微轉動。

小吸頭 (FC8089)

- 您可以使用小吸頭來進行小面積的清潔，例如椅墊及沙發等。 (圖 10)
- 您可以將小吸頭連接至吸塵管上，也可以直接連接到軟管的握把上。

- 1 要連接小吸頭時，請將其插入吸塵管或握把，連接時將其稍微轉動。

使用此產品

使用吸塵器清潔

- 1 請將電源線自產品中拉出，並將插頭插到牆上的插座。
- 2 用腳按下產品頂端的開/關 (on/off) 按鈕，以開啟產品電源。(圖 11)

調整吸力

使用吸塵器時，您可以用以下裝置調整吸力：

- 軟管握把上的撥鈕，或 (圖 12)
- 吸塵器上的電子吸力控制鈕 (限 FC8089)。(圖 13)

注意：使用最大吸力清潔非常骯髒的地毯與硬質地板。使用最小吸力清潔窗簾、桌布等。

固定吸塵管

- 若您想要暫停片刻，請將兩用吸頭上的突出物插入安置槽，將吸塵管固定在便於使用的位置。(圖 14)

收納

- 1 請關閉產品電源，並將插頭從牆上插座拔下。
- 2 按下收線鈕，將電源線收回。(圖 15)
- 3 使用後，將縫隙吸頭收納至其固定座中。(圖 9)
- 4 請將兩用吸頭上的突出物插入安置槽。(圖 14)

清空可重複使用的集塵袋

在您打開集塵室的蓋子清空可重複使用的集塵袋前，請務必將插頭拔掉。

注意：請只使用本產品隨附的可重複使用集塵袋。如果您使用其它集塵袋，可能導致馬達損害或縮短產品壽命。

- 集塵袋已滿指示燈持續顯示黃色時 (即便吸頭沒有貼緊地板)，請立即清空集塵袋。(圖 16)

- 1 將您的手指置於釋放拉片底下 (1)，然後打開集塵室的蓋子 (2)。(圖 17)
- 2 將集塵袋支托架連同集塵袋一併自集塵室中提起。(圖 18)
- 3 將集塵袋的前端自集塵袋支托架中拉出。(圖 19)
- 4 請將集塵袋拿到垃圾桶旁，然後將夾子朝集塵袋的側邊滑動，以清空集塵袋。(圖 20)
- 5 若要關閉集塵袋，請將夾子朝集塵袋下緣滑動。(圖 21)
- 6 將已清空集塵袋的前端儘可能卡進集塵袋支托架上的兩個狹槽中。(圖 22)
- 7 將集塵袋支托架固定拉片卡進集塵室內的兩道突起之間。(圖 23)

注意：確認集塵袋前端的箭頭朝下。

- 8 將集塵袋支托架向下推，直到集塵袋支托架固定拉片鎖至定位。

注意：如果未妥善安裝集塵袋，產品將無法運作。

9 關閉集塵室的蓋子。(圖 24)

注意：如果集塵袋支托架連同集塵袋沒有裝入，您無法關閉集塵室的蓋子。

提示：如果您想徹底清洗可重複使用的集塵袋，您可以用水清洗。要將集塵袋放回產品之前，請確定已讓集塵袋完全乾燥。

清潔濾網

排氣濾網

每三個月清洗排氣濾網。

1 拉動濾網柵口上的提把 (1)，將濾網柵口從本產品取下 (2)。(圖 25)

2 取出排氣濾網。將灰塵自濾網內輕搖倒入垃圾桶。(圖 26)

提示：要徹底清洗排氣濾網，您也可以用水清洗。要將濾網放回產品之前，請確定已讓濾網完全乾燥。

3 裝回排氣濾網。(圖 27)

4 要在吸塵器上重新裝上濾網柵口，請將柵口上的兩個突出物對準吸塵器上的兩個插槽，然後關上柵口(會聽見「喀噠」一聲)。(圖 28)

馬達防護濾網

請勿在未安裝馬達防護濾網的時候使用本產品，否則可能會損壞馬達並縮短產品壽命。

每次清洗可重複使用的集塵袋時，請清洗馬達防護濾網。

1 將馬達防護濾網從吸塵器內取出。

2 要清潔濾網，請將灰塵輕搖倒入垃圾桶。

提示：要徹底清洗馬達防護濾網，您也可以用水清洗。要將濾網放回產品之前，請確定已讓濾網完全乾燥。

更換

如果集塵袋已經無法確實清潔乾淨，請更換集塵袋。可重複使用的集塵袋服務編號為 4322 004 93641。

請只使用本產品隨附的可重複使用集塵袋。

環境保護

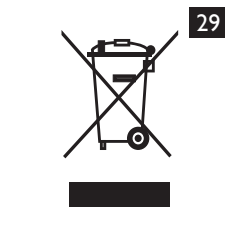
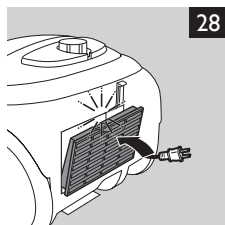
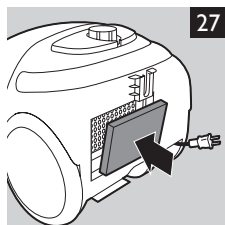
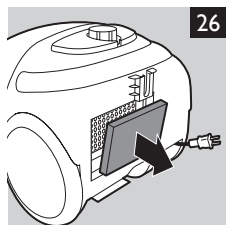
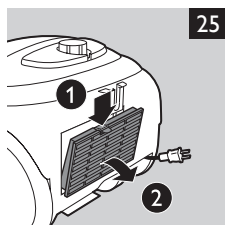
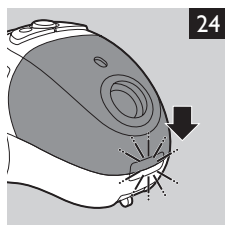
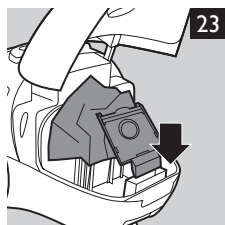
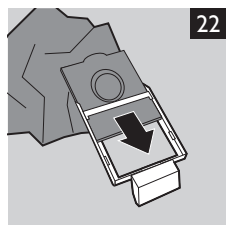
- 本產品使用壽命結束時請勿與一般家庭廢棄物一併丟棄。請將該產品放置於政府指定的回收站，此舉能為環保盡一份心力。(圖 29)

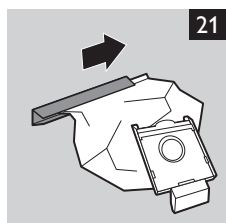
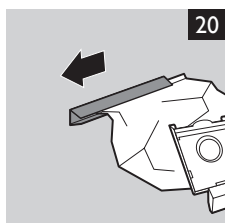
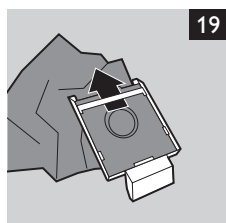
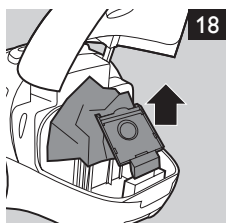
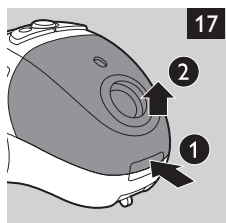
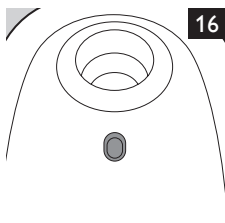
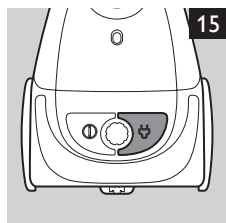
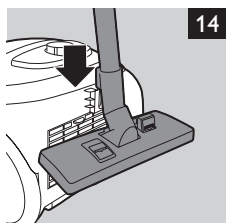
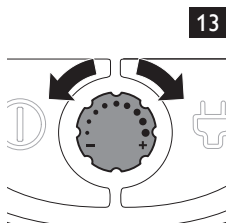
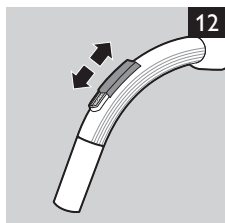
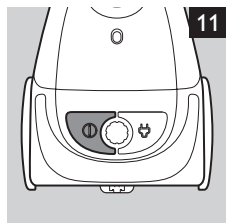
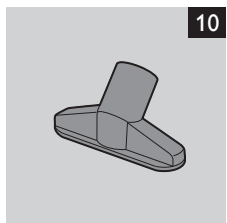
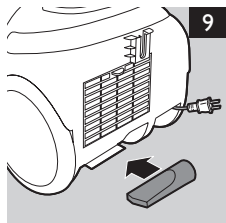
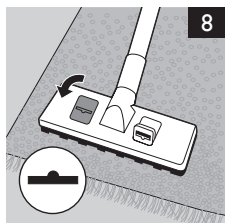
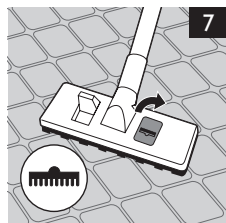
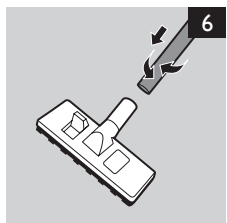
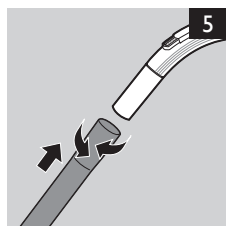
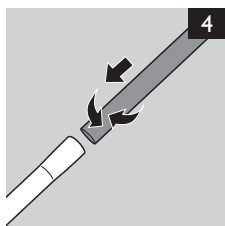
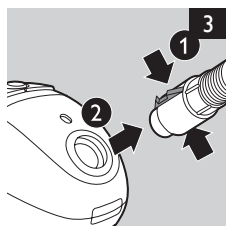
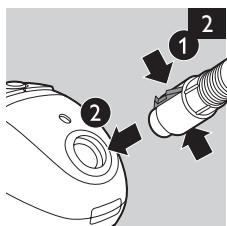
保固與服務

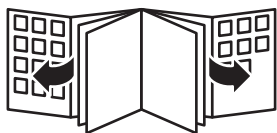
如需相關服務或資訊，或是有任何問題，請瀏覽飛利浦網站，網址為：www.philips.com，或聯絡您所在國家/地區的飛利浦客戶服務中心，電話號碼可參閱全球保證書。若您的所在國家/地區沒有客戶服務中心，請洽詢當地的飛利浦經銷商。

故障排除

問題	可能原因	解決方法
吸力不足。	握把上的吸力調節撥鈕為開啟狀態。	關閉握把上的吸力調節撥鈕。
	限 FC8089：電子吸力控制鈕設為低吸力設定。	請將電子吸力控制鈕設為高吸力設定。
	集塵袋已滿。	清空可重覆使用的集塵袋。
	馬達防護濾網及/或排氣濾網太髒。	要清潔濾網，請在垃圾桶上輕搖濾網。
	吸頭、吸塵管或軟管阻塞。	若要去除阻塞物，請拆下阻塞的部分，並盡可能地以相反的方向連接吸塵器。開啟吸塵器，從阻塞的部分將阻塞物吸出。









www.philips.com



100% recycled paper
100% papier recyclé

4222.003.3604.1