

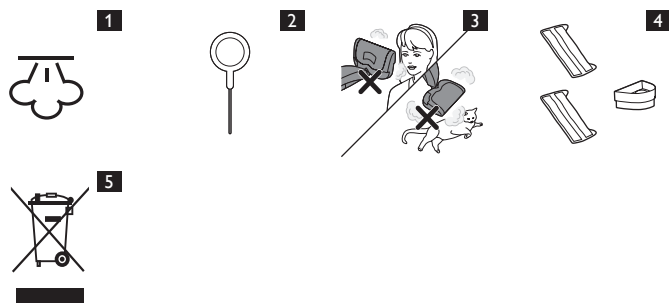
Register your product and get support at
www.philips.com/welcome

Important Information

重要信息

FC7020

蒸汽洁地板湿洗机



PHILIPS

PHILIPS

产品 : 飞利浦蒸汽洁地板湿洗机
型号 : FC7020
额定电压 : 220V~
额定频率 : 50Hz
额定输入功率: 1300 W
生产日期 : 请见产品本体
产地 : 中国苏州

飞利浦（中国）投资有限公司
上海市天目西路218号1602-1605
全国顾客服务热线: 4008 800 008

本产品根据国标 GB4706.1-2005, GB4706.57-2008制造

请妥善保管本使用说明书
发行日期: 10/12/2012



www.philips.com

100% recycled paper
100% papier recyclé
100% 循环再造纸

4222.003.3672.1

Introduction

Congratulations on your purchase and welcome to Philips! To fully benefit from the support that Philips offers, register your product at www.philips.com/welcome.

Important

Read this important information carefully before you use the appliance and save it for future reference.

Danger

- Never immerse the appliance in water or any other liquid, nor rinse it under the tap, except for the parts that can be removed for cleaning according to the instructions.
- Beware of hot steam that comes out of the appliance. Steam may cause scalding (Fig. 1).
- To avoid a hazard, do not move the appliance over its own mains cord or the mains cords of other appliances.

Warning

- Check if the voltage indicated on the appliance corresponds to the local mains voltage before you connect the appliance.
- Do not use the appliance if the plug, the mains cord or the appliance itself shows visible damage, or if the appliance has been dropped or leaks.
- Always return the appliance to a service centre authorised by Philips for examination or repair. Do not attempt to repair the appliance yourself, otherwise the guarantee becomes invalid.
- If the mains cord is damaged, you must have it replaced by Philips, a service centre authorised by Philips or similarly qualified persons in order to avoid a hazard.
- Never leave the appliance unattended when it is connected to the mains.
- This appliance can be used by children aged from 8 years and above and by persons with reduced physical, sensory or mental capabilities or lack of experience and knowledge if they have been given supervision or instruction concerning use of the appliance in a safe way and if they understand the hazards involved.
- Cleaning and user maintenance shall not be made by children unless they are older than 8 and supervised.
- Keep the appliance, the descaling pin and the mains cord out of the reach of children younger than 8 when the appliance is switched on or is cooling down. (Fig. 2)
- Children should be supervised to ensure that they do not play with the appliance.
- The nozzle of the appliance can become extremely hot and may cause burns if touched.

- Always unplug the appliance and let it cool down for at least 60 minutes before you clean it or attach or detach the pad and pad holder, the roller brush, the dust container and the filter, and before you unclog the steam opening with the descaling pin.
- The water tank has a capacity of 0.4 litres. Never fill the water tank with more than this amount.
- Never store the appliance at a temperature lower than 0°C.
- Never direct the hot steam from the nozzle at people or pets (Fig. 3).

Caution

- Only connect the appliance to an earthed wall socket.
- Do not use the appliance on the same spot too long, as this may damage the floor.
- Do not use the steam function on wood or laminate floors without a water-resistant top coat or whose water-resistant top coat is damaged. The steam may remove the sheen of wax-treated wooden floors. Always test an area out of direct view to make sure the floor can be cleaned with hot steam. We also advise you to check the maintenance instructions from the floor manufacturer.
- When you have finished steaming, always switch off and unplug the appliance and let the appliance cool down for 60 minutes.
- This appliance is intended for indoor household use only.
- Steam may damage or cause discolouration of certain surfaces.
- Noise level: $L_c = 71$ dB(A)

Type of water to be used

- Your appliance is designed to be used with tap water. If you live in an area with hard water, fast scale build-up may occur. In that case, use distilled water to prolong the life of your appliance.
- For optimal cleaning results, use distilled water.
- Do not put detergents, perfume, vinegar, starch, descaling agents, ironing aids or other chemicals in the water tank, as your appliance is not designed to work with these chemicals.
- To prolong the life of the appliance, replace the descaling filter every 6 months.

Electromagnetic fields (EMF)

This Philips appliance complies with all standards regarding electromagnetic fields (EMF).

Ordering accessories

To buy accessories or spare parts, visit www.shop.philips.com/service or go to your Philips dealer. You can also contact the Philips Consumer Care Centre in your country (see the worldwide guarantee leaflet for contact details).

- You can order a set of a new filter and two new pads under type number FC8056 (Fig. 4).

Environment

- Do not throw away the appliance with the normal household waste at the end of its life, but hand it in at an official collection point for recycling. By doing this, you help to preserve the environment (Fig. 5).

Guarantee and service

If you need service or information or if you have a problem, please visit the Philips website at www.philips.com/support or contact the Philips Consumer Care Centre in your country. You find its phone number in the worldwide guarantee leaflet. If there is no Consumer Care Centre in your country, go to your local Philips dealer.

Troubleshooting

Problem	Cause	Solution
The appliance does not steam.	You did not switch on the steam function.	Switch on the steam function by pressing the steam button on the front of the appliance.
	The boiler has not heated up yet.	When you press the steam button, the boiler starts heating up. After approx. 30 seconds the appliance is ready for steaming. The ring around the steam button lights up blue.
	There is no water in the water reservoir.	Fill the water reservoir and put it back into the appliance.
	The steam opening is clogged.	Over time minerals in the water cause scale to build up in the steam opening. Use the descaling pin supplied with the appliance to remove scale and other residues from the steam opening.
	The filter is clogged.	Over time minerals in the water cause scale to clog the openings in the filter. You have to replace the water filter every 6 months.
	The handle is not at the right angle.	To operate the appliance and use the steam function, you have to pull the handle towards you.

Problem	Cause	Solution
The roller brush does not rotate.	You have not pressed the pedal on the nozzle.	To clean the floor with the roller brush, press the grey pedal on the side of the nozzle.
I cannot pull the handle towards me.	The appliance is still in parking position.	To unlock the appliance from parking position, place your foot on the nozzle and pull the handle towards you. This releases the appliance from its parking position.

简体中文

简介

感谢您的惠顾，欢迎光临飞利浦！为了您能充分享受飞利浦所提供的支持，请在 www.philips.com/welcome 上注册您的产品。

注意事项

使用产品之前，请仔细阅读本重要信息，并妥善保管以供日后参考。

危险

- 不要将本产品浸入水或其它液体中，也不要在水龙头下冲洗，根据说明可以拆卸下来进行清洗的部件除外。
- 小心产品中排出的热蒸汽。蒸汽可能会导致烫伤。(图 1)
- 切勿在本产品的电源线或其他产品的电源线上移动本产品，以免发生危险。

警告

- 如果电源软线损坏，为避免危险，必须由制造厂或其维修部或类似的专职人员来更换。
- 如果插头、电源线或产品本身已经明显损坏，或产品曾坠落或出现渗漏，请勿再使用产品。
- 产品只能送到由飞利浦授权的维修中心检修。不要自己修理产品，否则产品维修保证书将会无效。
- 如果电源软线损坏，为避免危险，必须由制造厂或其维修部或类似的专职人员来更换。
- 电源接通期间，使用者不得离开。
- 本产品适合由 8 岁或以上年龄的儿童以及肢体不健全、感觉或精神上有障碍或缺乏相关经验和知识的人士使用，但前提是有人对他们使用本产品进行监督或指导，以确保他们安全使用，并且让他们明白相关的危害。
- 不要让儿童进行清洁和保养，除非儿童已年满 8 周岁且在有人监督的情况下。
- 当产品已通电或者正在冷却时，应将产品、除垢针及其电源线置于 8 岁以下儿童触及不到的地方。(图 2)
- 请照顾好儿童，本产品不能用于玩耍。
- 产品的喷嘴会变得非常烫，如触摸喷嘴，则会导致烫伤。

- 在您对其进行清洁或安装或拆卸垫子和垫子支架，以及您在使用除垢针疏通蒸汽出口时，请务必拔下产品的电源插头，并让其冷却至少 60 分钟。
- 水箱容量为 0.4 升。切勿向水箱中注入多于此水量的水。
- 切勿将本产品存放在 0° C 以下的环境中。
- 不要将热蒸汽直接对着他人或宠物。(图 3)

注意

- 产品只能使用带接地线的插座。
- 切勿让本产品在同一地点使用过长时间，否则会损坏地板。
- 请勿在没有防水表面涂层或防水表面涂层已损坏的本地板或强化木地板上使用蒸汽功能。蒸汽可能会去除已打蜡的木地板的光彩。请务必在隐蔽的区域进行测试，以确保地板可以用热蒸汽来清洁。我们也建议您查看地板制造商的保养说明。
- 结束蒸汽清洁后，请务必关闭产品并拔下插头，以让产品冷却 60 分钟。
- 本产品仅限于室内使用。
- 蒸汽可能损坏或导致某些表面褪色。
- 噪音强度：Lc = 71 dB(A)

应使用的水质类型

- 根据设计，您的产品适合使用自来水。如果您所居住的区域水质较硬，水垢积聚会很非常快。在这种情况下，请使用蒸馏水以延长产品的使用寿命。
- 为了获得最佳的清洁效果，请使用蒸馏水。
- 切勿将清洁剂、香水、醋、淀粉、除垢剂、烫衣剂或其它化学品注入水箱内，因为您的产品不适合使用这些化学品。
- 为了延长产品的使用寿命，请每 6 个月更换一次除垢滤网。

电磁场 (EMF)

本飞利浦产品符合与电磁场 (EMF) 相关的所有标准。

订购附件

要购买附件和备件，请访问 www.shop.philips.com/service 或请联系飞利浦经销商。您也可以联系您所在国家/地区的飞利浦客户服务中心

(联系详情，请参阅全球保修卡)。

- 您可以订购一套全新的滤网和两个全新的垫子，供应型号为 FC8056。(图 4)

环保

- 弃置产品时，请不要将其与一般生活垃圾堆放在一起；应将其交给官方指定的回收点。这样做有利于环保。(图 5)

保修与服务

如果您需要服务或信息，或者有任何疑问，请访问飞利浦网站：www.philips.com/support。您也可与您所在国家/地区的飞利浦客户服务中心联系（可从全球保修卡中找到其电话号码）。如果您所在的国家/地区没有飞利浦客户服务中心，请与当地的飞利浦经销商联系。

故障种类和处理方法

问题	原因	解决方法
产品不能产生蒸汽。	您没有打开蒸汽功能。	按下产品正面的蒸汽按钮即可打开蒸汽功能。
	蒸汽发生器尚未加热。	当您按下蒸汽按钮，蒸汽发生器即开始加热。大约 30 秒后，产品的蒸汽即可使用。蒸汽按钮周围的光环将呈蓝色亮起。
	水箱中没有水。	向水箱注水，然后将其放回产品。
	蒸汽出口被堵塞。	随着时间的推移，水中的矿物质导致蒸汽出口处的水垢聚集。使用产品随附的除垢针去除蒸汽出口处的水垢和其它残留物。
	过滤网堵塞。	随着时间的推移，水中的矿物质导致过滤网被堵塞。您应该每 6 个月更换一次过滤网。
	手柄的角度不合适。	要操作设备并使用蒸汽功能，您需要将手柄拉向您自己。
滚刷不能转动。	您未按下吸嘴上的踏板。	要用滚刷清洁地板，请按下吸嘴侧面的灰色踏板。
我无法将手柄拉向我自己。	产品仍然处于固定位置。	要将产品从固定位置解除锁定，请将您的脚踩在吸嘴上并将手柄拉向您自己。这会从固定位置释放本产品。