

PHILIPS

HD2103



EN User manual MY အသုံးပြုသူ လက်စွဲစာအုပ်
ID Buku Petunjuk Pengguna VI Hướng dẫn sử dụng
MN Хэрэглэгчийн гарын авлага ZH-S 用户手册
MS Manual pengguna



PHILIPS and the Philips Shield Emblem are registered trademarks of Koninklijke Philips N.V. and are used under license.
This product has been manufactured by and is sold under the responsibility of Versuni Holding B.V., and Versuni Holding B.V. is the warrantor in relation to this product.
2023 © Versuni Holding B.V.
6608.000.0794.0 (31/08/2023)



English

1 Your electric pressure cooker

Congratulations on your purchase, and welcome to Philips! To fully benefit from the support that Philips offers, register your product at www.philips.com/welcome

2 What's in the box

Electric pressure cooker main unit
Rice&Soup ladle Measuring cup
User manual Safety leaflet
Warranty card Power cord

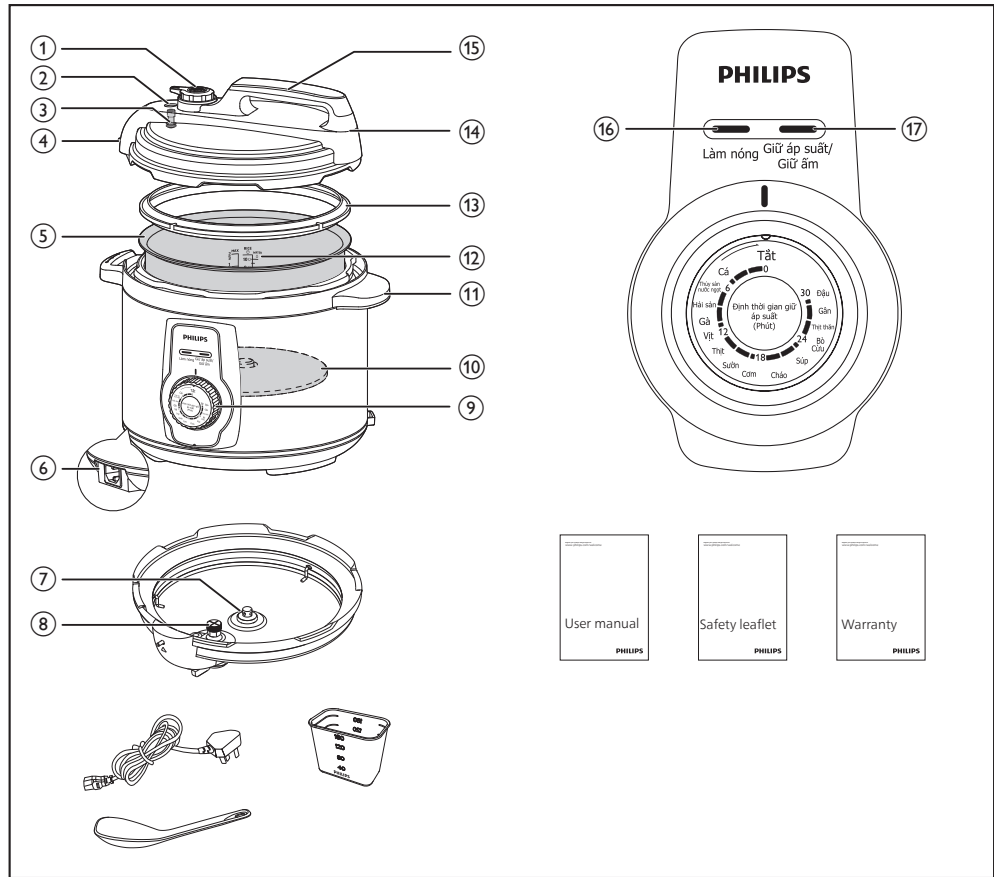
Overview

Table with 2 columns: Part number and Part name. Includes Pressure regulator valve, Floating valve, Floater, Locking pin, Inner pot, Power socket, Safety valve, Anti-block cap, Control knob, Heating element, Side handle, Water level indications, Sealing ring, Top lid, Lid handle, Heating indicator, Keep Pressure/Keep Warm indicator.

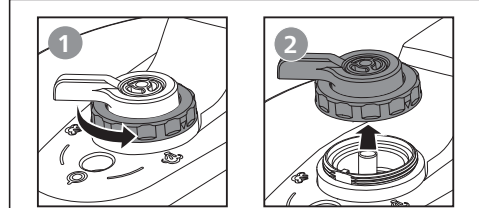
3 Before first use

- 1 Remove all packaging materials from the appliance.
2 Take out all the accessories from the inner pot.
3 Clean the parts of the electric pressure cooker thoroughly before using it for the first time (see chapter "Cleaning").

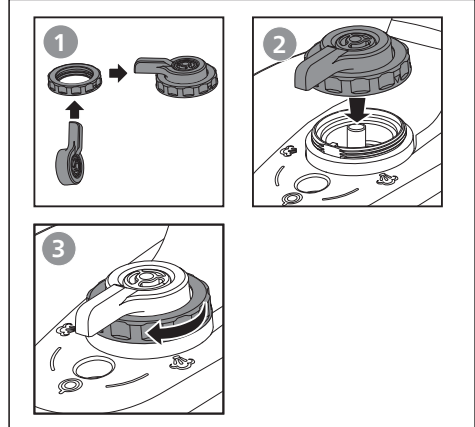
What's in the box Apa isi dalam kotak 包装盒内物品
Apa saja isi kemasanannya သွားအတွင်း၌ ပါဝင်သည့်ပစ္စည်းများ
Хайрцагт юу байна вэ Trong hộp có gì



To disassemble the pressure regulator valve ဖိအားညှိဘား ဖြုတ်ရန်
Untuk melepaskan katup regulator tekanan Để tháo van điều chỉnh áp suất
Даралт зохицуулах хавчлагыг салгахын тулд 要拆卸限压阀
Untuk menanggalkan injap pengatur tekanan



To assemble the pressure regulator valve ဖိအားညှိဘား တပ်ရန်
Untuk memasang katup regulator tekanan Để tháo van điều chỉnh áp suất
Даралт зохицуулах хавчлагыг угсархын тулд 要安装限压阀
Untuk memasang injap pengatur tekanan



Note
• Make sure all parts are completely dry before you start using the electric pressure cooker.

4 Using the electric pressure cooker

- Before using the electric pressure cooker to cook food, you need to follow below preparations:
1 Hold the lid handle and turn it clockwise until the top lid cannot move any more, then lift up the top lid.
2 Take out the inner pot from the electric pressure cooker and put the pre-washed food in the inner pot.
3 Put the inner pot back into the electric pressure cooker.
4 Place the top lid onto the electric pressure cooker and turn it anti-clockwise. You will hear a "click" sound when the top lid is properly locked.
5 Turn the pressure control valve to the sealed position (Seal).

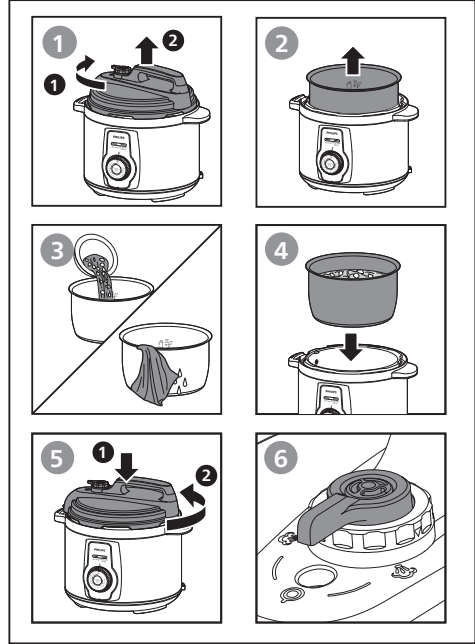
Note
• Make sure the sealing ring is properly assembled around the inside of the top lid.
• Make sure the pressure regulator valve and floating valve are clean and not blocked.
• Make sure the outside of the inner pot is dry and clean, and that there is no foreign residue on the heating element or the magnetic switch.
• Make sure the inner pot is in proper contact with the heating element.

Cooking food

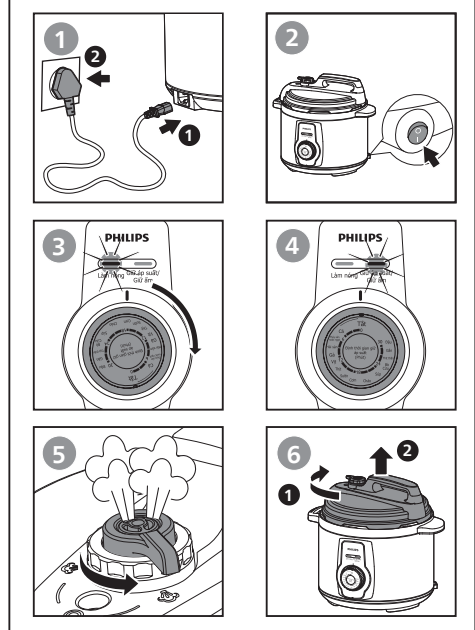
Note
• Do not fill the inner pot with less than 1/3 or more than 2/3 full of food and liquid.
• For food that expands during cooking, do not fill the inner pot with more than 1/2 full of food and liquid.
• For rice cooking, follow the water level indications on the inside of the inner pot. You can adjust the water level for different types of rice and your own preference. Do not exceed the quantities indicated on the inside of the inner pot.
• Make sure the floater falls down before cooking.

- 1 Follow the preparation steps in "Using the electric pressure cooker".
2 Put the plug in the power socket.
↳ The heating indicator (Heating) lights up.
↳ The electric pressure cooker starts heating and pressurizing.
3 Turn the control knob clockwise to choose the pressure keeping time.
4 When the electric pressure cooker reaches the working pressure, the heating indicator (Heating) turns off and the keep pressure indicator (Keep Pressure) lights up.
↳ The electric pressure cooker enters pressure keeping mode.
5 When the pressure keeping time has elapsed, the electric pressure cooker automatically switches to keep warm mode.
6 Turn the pressure regulator valve to the vent position (Vent).

Using the electric pressure cooker လျှပ်စစ်ဖိအားသုံးဆိုး အသုံးပြုနည်း
Menggunakan penanak bertekanan listrik Sử dụng nồi điện áp suất
Цахилгаан битүү чангачийг ашиглах 使用电压煲
Menggunakan periuk tekanan elektrik



Cooking food အစားအသောက် ချက်ပြုတ်ခြင်း
Memasak makanan Nấu thức ăn
Хоол хийх 烹饪食物
Memasak makanan



- ↳ The electric pressure cooker starts releasing pressure.
↳ The floater drops when the pressure is released sufficiently.
7 Hold the top lid handle and turn the lid clockwise until it cannot move any more, then lift it up.

Note
• When cooking soup or viscous liquid, do not release pressure by turning the pressure regulator valve to the steam vent position, otherwise liquid might spurt from the pressure control valve. Wait until the pressure is naturally released and the floater has dropped to open the top lid.
• Once the pressure cooker is on, turn the control knob and set the pressure keeping time. This is to avoid the pressure cooker to automatically switch to keep warm mode after heating.
• The pressure keeping timer will start counting when the working pressure is reached.
• After the cooking is finished and the pressure is released, unplug the electric pressure cooker to turn off the keep warm function or when not in use.

Tip
• Choose the desired pressure keeping time according to the time indications on the control panel. You can also adjust the pressure keeping time for different types of food and your preference.

Recommended pressure keeping time

Table with 2 columns: Cooking function and Recommended pressure keeping time (minute). Includes Fish, River-food, Sea-food, Chicken, Duck, Meat, Chop, Rice, Congee, Soup, Beef, Mutton, Tenderloin, Tendon, Beans.

Tip
• You can adjust the pressure keeping time for different types of food and your own preference.

Assembling and disassembling the pressure regulator valve

Caution
• Do not disassemble the pressure regulator valve during cooking. Always unplug the electric pressure cooker and wait until the pressure has been released sufficiently.

- To disassemble the pressure regulator:
1 Turn the lower screw counterclockwise until it becomes loose.
2 Pull it up and take out the pressure regulator.

- To assemble the pressure regulator:
1 Assemble the lower screw back to the regulator.
2 Make sure the regulator points at the sealed position (Seal) and put it back to the steam valve.
3 Turn the screw clockwise until it is fastened.

5 Specifications

Table with 2 columns: Model Number, Rated power input, Rated capacity, Warm keeping temperature, Pressure keeping time. Values: HD2103, 900W, 5.0L, 60-80°C, 0-30 minutes.

Note
• Always unplug the appliance if not used for a longer period.

6 Cleaning and Maintenance

Note
• Unplug the electric pressure cooker before starting to clean it.
• Wait until the electric pressure cooker has cooled down sufficiently before cleaning it.

Interior

- Inside of the outer lid and the main body:
• Wipe with wrung out and damp cloth.
• Make sure to remove all the food residues stuck to the electric pressure cooker.

- Heating element:
• Wipe with wrung out and damp cloth.
• Remove food residues with wrung out and damp cloth or toothpicks.

- Sealing ring:
• Soak in warm water and clean with sponge.

Exterior

- Surface of the outer lid and outside of the main body:
• Wipe with a cloth dampened with soap water.
• Only use soft and dry cloth to wipe the control panel.
• Make sure to remove all the food residues around the pressure regulator valve and floating valve.

- Pressure control valve and floating valve:
• Disassemble the pressure control valve, soak it in warm water, and clean with sponge.
• Remove food residues in the pressure control valve and floating valve with toothpicks.

Accessories

- Rice&Soup ladle and inner pot:
• Soak in hot water and clean with sponge.

7 Recycling

Do not throw away the product with the normal household waste at the end of its life, but hand it in at an official collection point for recycling. By doing this, you help to preserve the environment.

Follow your country's rules for the separate collection of electrical and electronic products. Correct disposal helps prevent negative consequences for the environment and human health.

8 Warranty and support

Versuni offers a two-year warranty after purchase on this product. This warranty is not valid if a defect is due to incorrect use or poor maintenance. Our warranty does not affect your rights under law as a consumer. For more information or for invoking the warranty, please visit our website www.philips.com/support

9 Troubleshooting

If your electric pressure cooker does not function properly or if the cooking quality is insufficient, consult the table below. If you are unable to solve the problem, contact a Philips service center or the Consumer Care Center in your country.

Table with 2 columns: Problem and Solution. Includes difficulties closing top lid, difficulties opening top lid, food not cooked, air/steam leaks, floater issues.

Indonesia

1 Penanak bertekanan listrik Anda

Selamat atas pembelian Anda dan selamat datang di Philips! Untuk memanfaatkan sepenuhnya dukungan yang ditawarkan Philips, daftarkan produk Anda di www.philips.com/welcome.

2 Apa saja isi kemasanannya

Unit utama penanak bertekanan listrik Gelas takar
Centong dan sendok sup Pamflet keselamatan
Petunjuk Penggunaan Kartu garansi Kabel listrik

Ikhtisar

Table with 2 columns: Part number and Part name. Includes Katup regulator tekanan, Katup mengambang, Floater, Pin pengunci, Panci bagian dalam, Soket Daya, Katup pengaman, Tutup anti-sumbat, Kenop kontrol, Elemen pemanas, Gagang samping, Indikator ukuran air, Gelang penyeget, Tutup atas, Pegangan tutup, Indikator pemanas, Indikator Tetap Tekan/Tetap Hangat.

3 Sebelum menggunakan alat pertama kali

- 1 Lepaskan semua kemasan dari alat.
2 Lepaskan semua aksesoris dari panci bagian dalam.
3 Bersihkan bagian-bagian penanak bertekanan listrik dengan saksama sebelum menggunakannya untuk pertama kali (lihat bab "Membersihkan").

Catatan
• Pastikan semua bagian benar-benar kering sebelum Anda mulai menggunakan penanak bertekanan listrik.

4 Menggunakan penanak bertekanan listrik

- Sebelum menggunakan penanak bertekanan listrik untuk memasak, Anda perlu melakukan persiapan berikut:
1 Pegang gagang tutup dan putar searah jarum jam hingga tutup atas tidak bisa bergerak lagi, kemudian angkat tutup atasnya.
2 Keluarkan panci bagian dalam dari penanak bertekanan listrik dan masukkan makanan yang telah dicuci ke dalam panci bagian dalam.
3 Masukkan panci bagian dalam kembali ke dalam penanak bertekanan listrik.
4 Pasang tutup atas ke penanak bertekanan listrik dan putar berlawanan arah jarum jam. Anda akan mendengar suara "klik" bila tutup telah terkunci dengan benar.
5 Putar katup kontrol tekanan ke posisi terseget (Seal).

Catatan
• Pastikan gelang penyeget terpasang dengan benar di sekeliling bagian dalam tutup atas.
• Pastikan katup regulator tekanan dan katup mengambang bersih dan tidak tersumbat.
• Pastikan bagian luar panci bagian dalam sudah kering dan bersih, dan tidak ada benda apa pun pada elemen pemanas atau sakelar magnetik.
• Pastikan panci bagian dalam telah bersentuhan dengan elemen pemanas secara tepat.

Memasak makanan

Catatan
• Jangan isi panci bagian dalam dengan makanan atau cairan kurang dari 1/3 atau lebih dari 2/3 bagian.
• Untuk makanan yang mengambang saat memasak, jangan isi panci bagian dalam dengan makanan atau cairan lebih dari 1/2 bagian.
• Untuk memasak nasi, ikuti indikator tingkat air di dalam panci bagian dalam. Anda dapat menyesuaikan ketinggian air untuk jenis beras yang berbeda dan preferensi Anda. Jangan melebihi jumlah yang ditunjukkan pada panci bagian dalam.
• Pastikan floater jatuh sebelum memasak.

- 1 Ikuti langkah persiapan dalam "Menggunakan penanak bertekanan listrik".
2 Pasang steker ke soket daya.
↳ Indikator pemanas (Heating) menyala.
↳ Penanak bertekanan listrik mulai memanaskan dan menekan.
3 Putar kenop kontrol searah jarum jam untuk memilih waktu tekanan.
4 Bila penanak bertekanan listrik mencapai tekanan yang tepat, indikator pemanas (Heating) mati dan indikator tetap tekan (Keep Pressure) menyala.
↳ Penanak bertekanan listrik memasuki mode tetap tekan.
5 Bila waktu tetap tekan selesai, penanak bertekanan listrik otomatis beralih ke mode tetap hangat.
6 Putar katup regulator tekanan ke posisi lubang (Vent).
↳ Penanak bertekanan listrik mulai melepaskan tekanan.
↳ Floater jatuh saat tekanan sudah cukup keluar.
7 Pegang gagang tutup atas dan putar tutupnya searah jarum jam hingga tidak bisa bergerak lagi, kemudian angkat.

Catatan
• Saat memasak sup atau cairan kental, jangan mengeluarkan tekanan dengan memutar katup regulator tekanan ke posisi lubang uap karena cairan bisa menyembur dari katup kontrol tekanan. Tunggu hingga tekanan keluar dengan sendirinya dan floater turun sebelum membuka tutupnya.
• Setelah penanak bertekanan menyala, putar kenop kontrol dan tetapkan waktu tekanan. Ini untuk menghindari penanak bertekanan beralih otomatis ke mode tetap hangat setelah memanass.
• Waktu tetap tekan akan memulai bila tekanan yang tepat sudah dicapai.
• Setelah memasak selesai dan tekanan dikeluarkan, cabut steker dari penanak bertekanan listrik untuk mematikan fungsi tetap hangat atau jika tidak digunakan.











