

Always here to help you

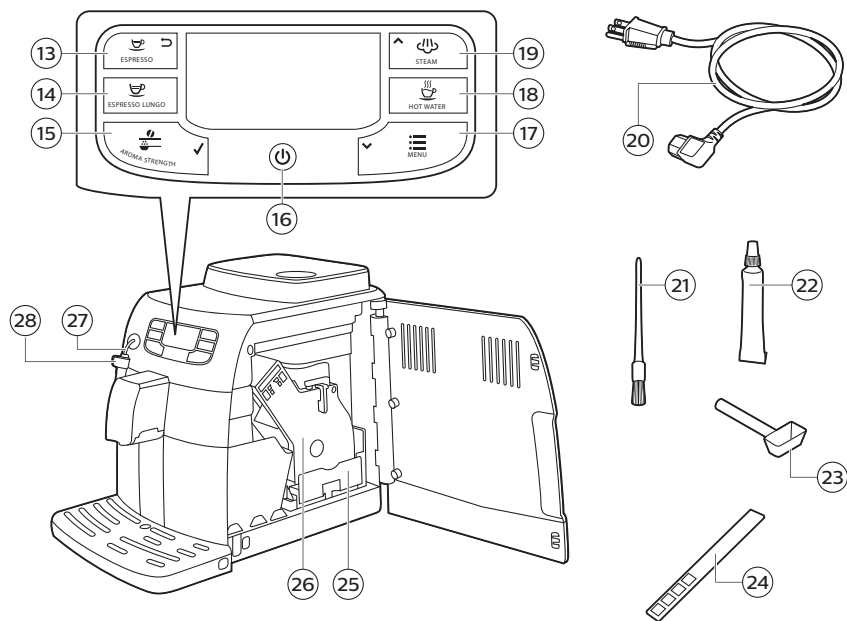
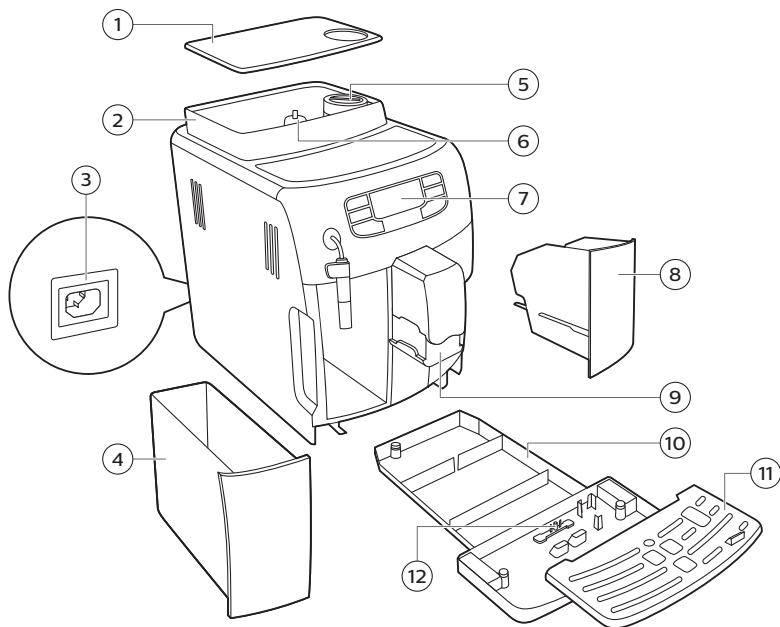
Register your product and get support at
www.saeco.com/welcome

Intelia Deluxe
HD8758/57



 **Saeco**

English 5



Contents

Introduction	5
Important safeguards	6
Caution	6
Instructions for the power supply cord	7
General description	7
Important	7
Warning	8
Caution	8
Electromagnetic fields (EMF)	9
The display	9
First installation	10
Manual rinsing cycle	10
Water filter	10
Installing the water filter	11
Replacing the water filter	11
Measuring the water hardness	11
Using the machine	12
Brewing coffee with beans	12
Brewing coffee with pre-ground coffee	12
Adjusting the coffee quantity	13
Adjusting the grind setting	13
Frothing milk	13
Hot water	13
Descaling	14
Descaling procedure	14
Interruption of the descaling cycle	15
Cleaning and maintenance	15
Weekly cleaning of the brew group	15
Lubrication	16
Classic milk frother cleaning (daily)	17
Classic milk frother and steam wand cleaning (weekly)	17
Warranty and support	17
Ordering maintenance products	18
Disposal	18
Warning icons and error codes	18
Meaning of error codes	19
Troubleshooting	20

Introduction

Congratulations on buying this Intelia/Intelia Deluxe full automatic espresso machine! To fully benefit from the support that Saeco offers, please register

your product at www.saeco.com/welcome. This quick start guide applies to all Intelia/Intelia Deluxe models with classic milk frother. The machine is suitable for preparing espresso coffee using whole coffee beans.

Important safeguards

When using electrical appliances, basic safety precautions should always be followed, including the following:

- 1 Read all instructions.
- 2 Do not touch hot surfaces. Use handles or knobs.
- 3 To protect against fire, electric shock and injury to persons do not immerse cord, plugs, or appliance in water or other liquid.
- 4 Close supervision is necessary when the appliance is used by or near children.
- 5 Unplug from outlet when not in use and before cleaning. Allow to cool before putting on or taking off parts, and before cleaning the appliance.
- 6 Do not operate any appliance with a damaged cord or plug or after the appliance malfunctions, or has been damaged in any manner. Return appliance to the nearest authorized service facility for examination, repair or adjustment.
- 7 The use of accessory attachments not recommended by the appliance manufacturer may result in fire, electric shock or injury to persons.
- 8 Do not use outdoors.
- 9 Do not let cord hang over edge of table or counter, or touch hot surfaces.
- 10 Do not place on or near a hot gas or electric burner, or in a heated oven.
- 11 Always attach plug to appliance first, then plug cord into wall outlet. To disconnect, turn any control to "off", then remove plug from wall outlet.
- 12 Do not use appliance for other than intended use.

SAVE THESE INSTRUCTIONS

Caution

This appliance is for household use only. Any servicing, other than cleaning and user maintenance, should be performed by an authorized service center. Do not immerse machine in water. To reduce the risk of fire or electric shock, do not disassemble the machine. There are no parts inside the machine serviceable by the user. Repair should be done by authorized service personnel only.

- 1 Check voltage to be sure that the voltage indicated on the nameplate corresponds with your voltage.
- 2 Never use warm or hot water to fill the water tank. Use cold water only.
- 3 Keep your hands and the cord away from hot parts of the appliance during operation.
- 4 Never clean with scrubbing powders or harsh cleaners. Simply use a soft cloth dampened with water.
- 5 For optimal taste of your coffee, use purified or bottled water. Periodic descaling is still recommended every 2-3 months.
- 6 Do not use caramelized or flavored coffee beans.

Instructions for the power supply cord

- A short power-supply cord (or detachable power-supply cord) is to be provided to reduce risks resulting from becoming entangled in or tripping over a longer cord.
- Longer detachable power-supply cords or extension cords are available and may be used if care is exercised in their use.
- If a long detachable power-supply cord or extension cord is used.
 - 1** The marked electrical rating of the detachable power-supply cord or extension cord should be at least as great as the electrical rating of the appliance.
 - 2** If the appliance is of the grounded type, the extension cord should be a grounding-type 3-wire cord, and
 - 3** The longer cord should be arranged so that it will not drape over the counter top or table top where it can be pulled on by children or tripped over.

General description

- 1 Coffee bean hopper lid
- 2 Coffee bean hopper
- 3 Power cord socket
- 4 Water tank
- 5 Pre-ground coffee compartment
- 6 Grinder adjustment knob
- 7 Control panel
- 8 Coffee grounds container
- 9 Coffee dispensing spout
- 10 Drip tray
- 11 Drip tray cover
- 12 Drip tray full indicator
- 13 Espresso button
- 14 Espresso lungo button
- 15 Aroma strength button
- 16 Standby button
- 17 Menu button
- 18 Hot water button
- 19 Steam button
- 20 Power supply cord
- 21 Cleaning brush (for specific types only)
- 22 Grease for the brew group (for specific types only)
- 23 Pre-ground coffee measuring spoon
- 24 Water hardness test strip
- 25 Coffee residues drawer
- 26 Brew group
- 27 Hot water/steam dispensing spout
- 28 Classic milk frother

Important

Read and follow the safety instructions carefully and only use the machine as described in this user manual to avoid accidental injury or damage due to improper use of the machine. Keep this user manual for future reference.

Warning

- Check if the voltage indicated on the machine corresponds to the local voltage before you connect the machine
- Connect the machine to a grounded wall outlet.
- Do not let the power supply cord hang over the edge of a table or counter, or touch hot surfaces.
- Never immerse the machine, power plug or power supply cord in water (danger of electrical shock).
- Do not pour liquids on the power supply cord connector.
- Never direct the hot water jet towards body parts: danger of burns.
- Do not touch hot surfaces. Use handles and knobs.
- Remove the power plug from the wall outlet:
- If a malfunction occurs.
- If the machine will not be used for a long time.
- Before cleaning the machine.
- Pull on the power plug, not on the power supply cord. Do not touch the power plug with wet hands.
- Do not use the machine if the power plug, the power supply cord or the machine itself is damaged.
- Do not make any modifications to the machine or its power supply cord. Only have repairs carried out by a service center authorized by Philips to avoid a hazard.
- The machine should not be used by children younger than 8 years old.
- This machine can be used by children aged from 8 years and above and persons with reduced physical, sensory or mental capabilities or lack of experience and knowledge if they have been given supervision or instruction concerning use of the machine in a safe way and understand the hazards involved. Children shall not play with the machine. Cleaning and user maintenance shall not be made by children unless they are 8 years and above and supervised.
- Keep the appliance and its power supply cord out of reach of children aged less than 8 years.
- Do not spill water on the power plug.
- Only use the machine as described in the user manual to avoid potential injury due to misuse.
- Never insert fingers or other objects into the coffee grinder.

Caution

- As water is a foodstuff, the water in the water tank must be used up within 1 to 2 days.
- If you are not going to use your coffee machine for a prolonged period (e.g. a holiday), we recommend that you discard any water left inside the tank. Before you use the coffee machine again, clean the water tank and perform a manual rinsing cycle.
- Do not put any of the detachable parts of the machine in the dishwasher, except for the milk carafe.

- The machine is for household use only. It is not intended for use in environments such as canteens, staff kitchen of shops, offices, farms or other work environments.
- Always put the machine on a flat and stable surface.
- Do not place the machine on hot surfaces, directly next to a hot oven, heater or similar source of heat.
- Only put roasted coffee beans into the coffee bean hopper. If ground coffee, instant coffee, raw coffee beans or any other substance is put in the coffee bean hopper, it may damage the machine.
- Let the machine cool down before inserting or removing any parts.
- Never use warm or hot water to fill the water tank. Use cold non-sparkling drinking water.
- Never clean with scrubbing powders or harsh cleaners. Simply use a soft cloth dampened with water.
- Descalc the machine regularly. The machine indicates when descaling is needed. If you do not clean and descale the machine, you run the risk that the machine stops working and that your guarantee becomes invalid.
- Do not keep the machine at temperatures below 32°F. Water left in the heating system may freeze and cause damage.
- Do not leave water in the tank when the machine is not used over a long period of time. The water can get contaminated. Use fresh water every time you use the machine.

Electromagnetic fields (EMF)

This machine complies with all applicable standards and regulations regarding exposure to electromagnetic fields.

The display

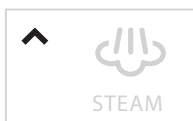
Some buttons can be used to navigate through the menus:



- ESPRESSO button = ESC button: you can press this button to return to the main menu. The ESC button takes you back one level. You may have to press the ESC button several times to get back to the main menu.



- AROMA STRENGTH button = OK button: you can press this button to select, confirm or stop a function.



- STEAM button = UP button: press this button to scroll up through the display menu



- MENU button = DOWN button: press this button to scroll down through the display menu.

First installation

- 1 Slide the drip tray with drip tray cover into the machine.
- 2 Remove the water tank.
- 3 Fill the water tank to the MAX level with fresh water.
- 4 Fill the coffee bean hopper with coffee beans.
- 5 Insert the small plug into the socket located on the back of the machine. Insert the mains plug into the wall socket.
- 6 Attach the classic milk frother to the hot water/steam dispensing spout.
- 7 Place a container under the classic milk frother.
- 8 Press the STANDBY button to switch on the machine.
- 9 Press the OK button to start the automatic circuit priming cycle.
 - The machine performs an automatic rinsing cycle.
- 10 Remove the water tank from the machine and empty it.
- 11 Fill the water tank with fresh water and place it back into the machine.
- 12 Continue with the next step: the manual rinsing cycle.



Manual rinsing cycle

- 1 Place a container under the coffee dispensing spout.
- 2 Press the AROMA STRENGTH button to select pre-ground coffee. Do not add pre-ground coffee.
- 3 Press the ESPRESSO LUNGO button. The machine starts dispensing water.
- 4 When the machine stops dispensing, empty the container. Repeat steps 1-3 twice.
- 5 Place a container under the classic milk frother.
- 6 Press the HOT WATER button. Hot water dispensing starts automatically.
Dispense water until the display shows the no water icon.
- 7 Fill the water tank with fresh water up to the MAX level and remove the container.

The machine is ready for use.

Water filter

The “MAVEA” water filter is designed to reduce limescale deposits in your coffee machine and provide filtered water to preserve the aroma and flavor of each cup of coffee.

Installing the water filter

- 1 Remove the small white filter from the water tank and store it in a dry place.

Note: Please keep the small white filter for future use. You will need it for the descaling process.

- 2 Remove the filter from its packaging and immerse it in cold water with the opening pointing upwards. Press the sides of the filter gently to let out the air bubbles.
- 3 Place the filter in the empty water tank. Press it down until it cannot move any further.
- 4 Fill the water tank with fresh water up to the MAX indication and place it the machine.
- 5 Select the hot water function and dispense hot water until the water tank is empty (see chapter 'Using the machine', section 'Brewing special drinks').
- 6 Refill the water tank with fresh water up to the MAX indication and place it back into the machine.
- 7 Press the MENU button to enter the menu.
- 8 Press the DOWN button until the display shows the following icon.



- 9 Press the UP button to select 'ON' and press the OK button to confirm.
- 10 Press the ESC button.
The filter and machine are now ready for use.



Replacing the water filter



- The display shows the following icon to indicate the water filter needs to be replaced.

- 1 Replace the filter as described in section 'Installing the water filter'.
- 2 Press the MENU button and press the UP/DOWN button to scroll through the options on the menu until the following icon is displayed.



- 3 Select the RESET option and press the OK button to confirm.
- 4 Press the ESC button to exit.

If the filter is already installed and you want to remove it and not replace it, choose OFF

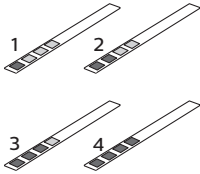
Measuring the water hardness

To be able to adjust the machine settings to the water in your region, please measure the water hardness with the water hardness strip supplied.

12 English



- 1 Immerse the water hardness test strip (supplied with the machine) in fresh water for 1 second.
- 2 Remove the water hardness strip and wait for 1 minute.



- 3 Check how many squares have changed into the red color and check the water hardness in below table.

numbers of red squares	value to be set	water hardness
1	1	very soft water
2	2	soft water
3	3	hard water
4	4	very hard water

Setting the water hardness

- 1 To set the water hardness, press the MENU button, select menu and scroll to select water hardness.
- 2 Press the OK button and select the water hardness in your area.
- 3 Press the OK button to confirm.
- 4 Press the ESC button to return to the main menu.

Using the machine

Brewing coffee with beans

- 1 Adjust the coffee dispensing spout to suit the size of your cup.
- 2 Press the AROMA STRENGTH button to select the desired coffee strength from 1-5 beans.
- 3 Press the ESPRESSO button to brew an espresso or press the ESPRESSO LUNGO button to brew a coffee.

Brewing coffee with pre-ground coffee

When you brew coffee with pre-ground coffee, use the measuring scoop in the multifunctional tool supplied to put the correct dose in the pre-ground

coffee compartment. If you add more pre-ground coffee, the excess coffee will end up in the coffee grounds drawer.

- 1 Open the lid of the pre-ground coffee compartment.
- 2 Pour one measuring scoop of pre-ground coffee into the compartment.

Caution: Do not put any other substance than pre-ground coffee in the pre-ground coffee compartment, as this may damage the machine.

- 3 Place the lid back on the pre-ground coffee compartment.
- 4 Place a cup under the coffee dispensing spout.
- 5 Press the AROMA STRENGTH button to select pre-ground coffee.
 - The machine automatically starts brewing coffee.

Note: You can only brew one coffee beverage at a time with pre-ground coffee.

Adjusting the coffee quantity

- 1 Press and hold the ESPRESSO button or ESPRESSO LUNGO button until the display shows the word MEMO.
- 2 When the cup contains the desired amount of coffee, press the OK button to save the selected quantity.

Adjusting the grind setting

- 1 Open the coffee bean hopper.
- 2 Place the end of the measuring spoon handle on the grinder adjustment knob in the coffee bean hopper. Use the spoon to press and turn the knob to the left or to the right one notch a time.
- 3 There are 10 different grinding degree settings you can choose from. The smaller the dot, the stronger the coffee.
 - Coarse grind: lighter taste, for dark roasted coffee blends.
 - Fine grind: bolder taste, for light roasted coffee blends.
- 4 Place the coffee bean hopper back.
- 5 Brew 2-3 coffees to taste the difference.

Frothing milk

Warning: Danger of scalding. Only grab the steam wand by its protective handle. Dispensing may be preceded by small jets of hot water.

- 1 Fill 1/3 of a jug with cold milk.
- 2 Immerse the classic milk frother in milk. Press the STEAM button.
- 3 Froth the milk by gently swirling the jug and moving it up and down.
- 4 Press the OK button to stop frothing.

Hot water

Warning: Danger of scalding. Only grab the steam wand by its protective handle. Dispensing may be preceded by small jets of hot water.

- 1 Place a jug under the classic milk frother.
- 2 Press the HOT WATER button. Hot water dispensing starts automatically.
- 3 Press the OK button to stop hot water dispensing. Remove the container.

Descaling



You have to descale the machine when the display shows the CALC CLEAN icon.

If you do not descale when the display shows the CALC CLEAN icon, the machine may stop working properly. In this case, repairs are not covered by the warranty.

Never drink the water with descaling mixture that you pour into the water tank or any water with residues that comes out of the machine during the descaling procedure.

The descaling procedure lasts approximately 30 minutes. Only use the Saeco descaling solution to descale the machine. The Saeco descaling solution is designed to ensure optimal performance of the machine.

Descaling procedure



You can pause the descaling or rinsing cycle by pressing the ESC button. The display will show the following icon. To continue the descaling or rinsing cycle, press the OK button.



- 1 Remove and empty the drip tray. Slide the drip tray back into the machine.
- 2 Remove the water filter from the water tank (if present).
- 3 Remove the classic milk frother from the steam wand.
- 4 Press the OK button.
- 5 The display shows the following icon to indicate that the machine enters the descaling cycle. If you want to exit the descaling cycle, press the ESC button.
- 6 Pour the entire bottle of Saeco descaling solution (250ml) into the water tank.
- 7 Add water to the descaling solution in the water tank up to the CALC CLEAN indication.
- 8 Place a large container (1.5 l) under the steam wand and dispensing spout.
- 9 Press the OK button to start the descaling cycle.
 - The machine dispenses the entire descaling solution at regular intervals through the steam wand and dispensing spout (this takes approximately 25 minutes).
- 10 Wait until all of the descaling solution has been dispensed. Remove and empty the container.
- 11 Remove and empty the drip tray. Slide the drip tray back into the machine.
- 12 Rinse the water tank and fill it with fresh water up to the CALC CLEAN indication. Slide the water tank back into the machine.
- 13 Place the container back under the steam wand and dispensing spout.



14 Press the OK button to start the rinsing cycle (this takes approximately 4 minutes).

- The display shows the following icon to indicate that the rinsing cycle is finished.

15 The display shows a tick icon.

16 Rinse the water tank and fill it with fresh water up to the MAX level. Place the water tank back into the machine.

17 Press the OK button to return to the main menu.

18 The display shows the following icon to indicate that the machine is heating up.

- The machine performs an automatic rinsing cycle.

19 Remove the container. Remove and empty the drip tray. Slide the drip tray back into the machine.

20 Place the water filter back in the water tank. Reinsert the classic milk frother.

21 Remove and rinse the brew group see chapter 'Cleaning and maintenance', section 'Clean the brew group'.

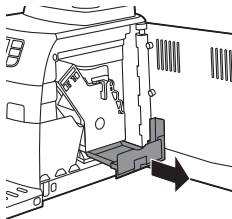
The machine is now ready for use.

Interruption of the descaling cycle

Once the descaling cycle has started, you must complete it till the very end without turning off the machine. In case you get stuck during the cycle or in case of power failure or accidental disconnection of the power cord, you can exit by pressing the standby button. If this occurs, empty and rinse carefully the water tank, then fill it up to the CALC CLEAN level. Follow the instructions in chapter 'First installation', section 'Manual rinsing cycle' before brewing any beverage. If the cycle was not completed, the machine will require another descaling cycle to be performed at your earliest convenience.

Cleaning and maintenance

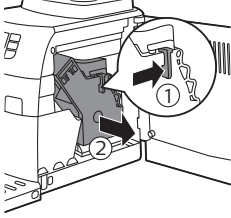
Weekly cleaning of the brew group



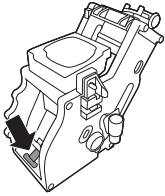
Clean the brew group once per week.

- 1** Remove the coffee grounds container and open the service door.
- 2** Remove the coffee residues drawer.

16 English

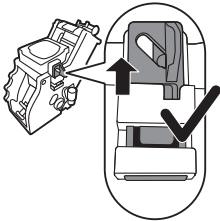


- 3 To remove the brew group, press the lever and pull the brew group out of the machine.
- 4 Rinse the brew group with fresh water and let it air dry.

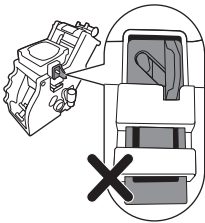


- 5 To place the brew group back, make sure that the lever is in contact with the base of the brewing unit.

Note: If it is not in contact with the base, push it down.



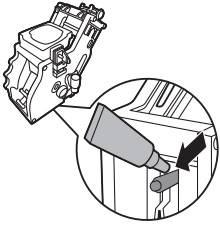
- 6 Make sure the locking hook of the brew group is in the correct position. To position the hook correctly, push it upwards until it is in uppermost position.



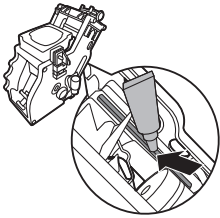
- 7 The hook is not correctly positioned if it is still in bottommost position.
- 8 Slide the brew group back into the machine along the guiding rails on the sides until it clicks into position. Then place the coffee residues drawer back in the machine.

Lubrication

Lubricate the brew group after approximately 500 cups of coffee or once a month.



- 1 Apply some lubricant around the shaft in the bottom of the brewing unit.

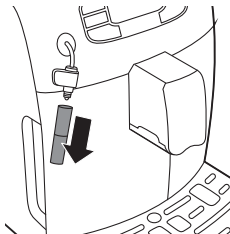


- 2 Apply lubricant to the rails on both sides, as shown in the illustration.
- 3 Slide the brew group back into the machine along the guiding rails on the sides until it clicks into position. Then place the coffee residues drawer back in the machine.

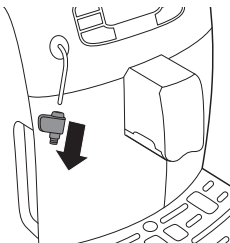
Classic milk frother cleaning (daily)

Remove the external part of the classic milk frother and rinse it with fresh water.

Classic milk frother and steam wand cleaning (weekly)



- 1 Remove the external part of the classic milk frother and rinse it with fresh water.



- 2 Remove the upper part of the classic milk frother from the steam wand and rinse it with fresh water.
- 3 Clean the steam wand with a wet cloth.
- 4 Reassemble all the classic milk frother parts.

Warranty and support

If you need information or support, please visit www.saeco.com/support or read the separate worldwide guarantee leaflet.

To buy spare parts, visit www.shop.philips.com/service or go to your Saeco dealer or authorized service center. You can also contact the Philips/Saeco hotline in your country.

Ordering maintenance products

- MAVEA (CA6702)
- Descaling solution (CA6700)

Disposal

This product may contain lead and mercury. Disposal of these materials may be regulated due to environmental considerations. For disposal or recycling information, please contact your local authorities or visit www.recycle.philips.com.

Warning icons and error codes

Warning signals are displayed in red. Below you find a list of the warnings that may appear on the display and their meaning.

- Fill the water tank with fresh water to the MAX level indication.



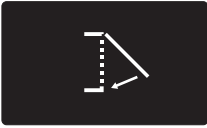
- The bean hopper is empty. Put new coffee beans in the bean hopper.



- The brew group is not in the machine. Insert the group.



- Close the service door.



- Remove the coffee grounds container and empty it.



- There is too much powder in the brew group. Clean the brew group.
- If an error code is triggered, check the section 'Meaning of error codes' to see what the code on the display means and what you can do. The machine cannot be used when this icon is on the display.



- You forgot to place the lid on the pre-ground coffee compartment. If you do not place it back within 30 seconds the display will return to the main menu and the brewing cycle will be stopped.



Meaning of error codes

Error code	Problem	Cause	Possible solution
1	Coffee grinder blocked	Coffee exit duct clogged	Clean the coffee exit duct thoroughly with the handle of the multifunctional tool or a spoon handle.
3 - 4	The brew group cannot be removed.	The brew group is not positioned correctly.	Close the maintenance door. Switch the machine off and back on again. Wait for the 'machine ready' icon on the display and then remove the brew group.

20 English

5	Water circuit problem	There is air in the water circuit.	Remove and place back the water tank a couple of times. Make sure you insert it into the machine properly. Check if the water tank compartment is clean.
---	-----------------------	------------------------------------	--

Other error codes

Switch the machine off and switch it back on again after 30 seconds. Try this 2 or 3 times.

If the above solutions do not help to remove the error code icon from the display and bring the machine back to normal working order, contact the Philips Saeco hotline. Contact details can be found in the warranty booklet or on www.saeco.com/support.

Troubleshooting

Problem	Cause	Solution
The machine does not turn on	The machine is disconnected.	Check if the power supply cord is inserted correctly
The machine is in DEMO mode.	The standby button has been pressed for more than 8 seconds.	Switch the machine off and then on again.
The drip tray is quickly filled.	This is normal. The machine uses water to rinse the internal circuit and brew group. Some water flows through the internal system directly into the drip tray.	Empty the drip tray when the 'drip tray full' full indicator pops up through the drip tray cover.
		Place a cup under the dispensing spout to collect rinsing water.
The coffee grounds container full icon remains displayed.	The coffee grounds container was emptied while the machine was switched off.	Always empty the coffee grounds container while the machine is ON. If the coffee grounds container is emptied while the machine is switched off, the coffee cycle counter is not reset. In that case, the 'empty coffee grounds container' message will stay on the display even though the container is not full.
	The coffee grounds container was placed back too fast.	Do not place back the coffee grounds container until the screen message prompts you to put it back
The brew group cannot be removed.	The brew group is not positioned correctly.	Close the maintenance door. Switch the machine off and back on again. Wait for the machine ready screen to appear and then remove the brew group.
	The coffee grounds container is not removed.	Remove the coffee grounds container before removing the brew group.

	The machine is still in the descaling process.	You cannot remove the brew group when the descaling process is active. First complete the descaling process and then remove the brew group.
The brew group cannot be inserted.	The brew group is not in the correct position.	The brew group was not put in rest position before it was placed back. Make sure that the lever is in contact with the base of the brew group and that the hook of the brew group is in the correct position.
		Reset the machine by switching it on and off. Place the drip tray and the coffee grounds container back. Leave the brew group out. Close the maintenance door and switch the machine on and off. Then try to reinsert the brew group.
The coffee has too little crema or is watery.	The grinder is set to a coarse setting.	Adjust the grinder to a finer setting.
	The brew group is dirty.	Clean the brew group. For thorough cleaning, follow the monthly cleaning procedure with the degreasing tablet.
	The coffee exit duct is dirty.	Clean the coffee exit duct thoroughly with the handle of the multifunctional tool or a spoon handle.
	The coffee blend is not the correct one.	Try another coffee blend.
	The machine is performing its self-adjustment.	Brew a few cups of coffee.
The coffee is not hot enough.	The cups you use are cold.	Preheat the cups by rinsing them with hot water.
	The temperature is set too low. Check the menu settings.	Set the temperature to high in the menu.
	You added milk.	Whether the milk you add is warm or cold, it will always decrease the temperature of the coffee to some extent.
The machine grinds the coffee beans, but coffee does not come out.	The grind is set too fine.	Adjust the grinder to a coarser setting.
	The brew group is dirty.	Clean the brew group.
	The coffee dispensing spout is dirty.	Clean the coffee dispensing spout and its holes with a pipe cleaner.
	The coffee exit duct is blocked.	Clean the coffee exit duct with the handle of the multifunctional tool or a spoon handle.

22 English

The coffee comes out slowly.	The grind is ground too finely.	Change the grinder to a coarser setting.
	The brew group is dirty.	Clean the brew group.
	The coffee exit duct is blocked.	Clean the coffee exit duct with the handle of the multifunctional tool or a spoon handle.
	The machine circuit is blocked by limescale.	Descalcify the machine.
The milk does not froth.	The automatic milk frother is dirty or not assembled or installed correctly.	Clean the automatic milk frother and make sure it is correctly assembled or installed.
	The type of milk used is not suitable for frothing.	Different types of milk result in different amounts of froth and different froth qualities. Semi-skimmed or full-fat cow's milk give good results.
	You did not replace the filter when the filter symbol started flashing.	
The filter does not fit.	You need to remove air from the filter.	Let air bubbles come out of the filter.
	There is still water in the water tank.	Empty the water tank before you install the filter.
There is water under the machine.	The drip tray is too full and overflowed.	Empty the drip tray when the drip tray full indicator pops up through the drip tray. Always empty the drip tray before you start descaling the machine.
	The machine is not placed on a horizontal surface.	Place the machine on a horizontal surface so that the drip tray full indicator works properly.

Note: If you are unable to solve the problem with the information in this table, contact the Philips/Saeco hotline.



www.saeco.com/welcome



100% recycled paper

4219.460.3151.1 REV00

