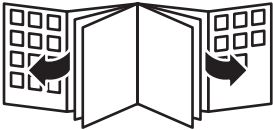
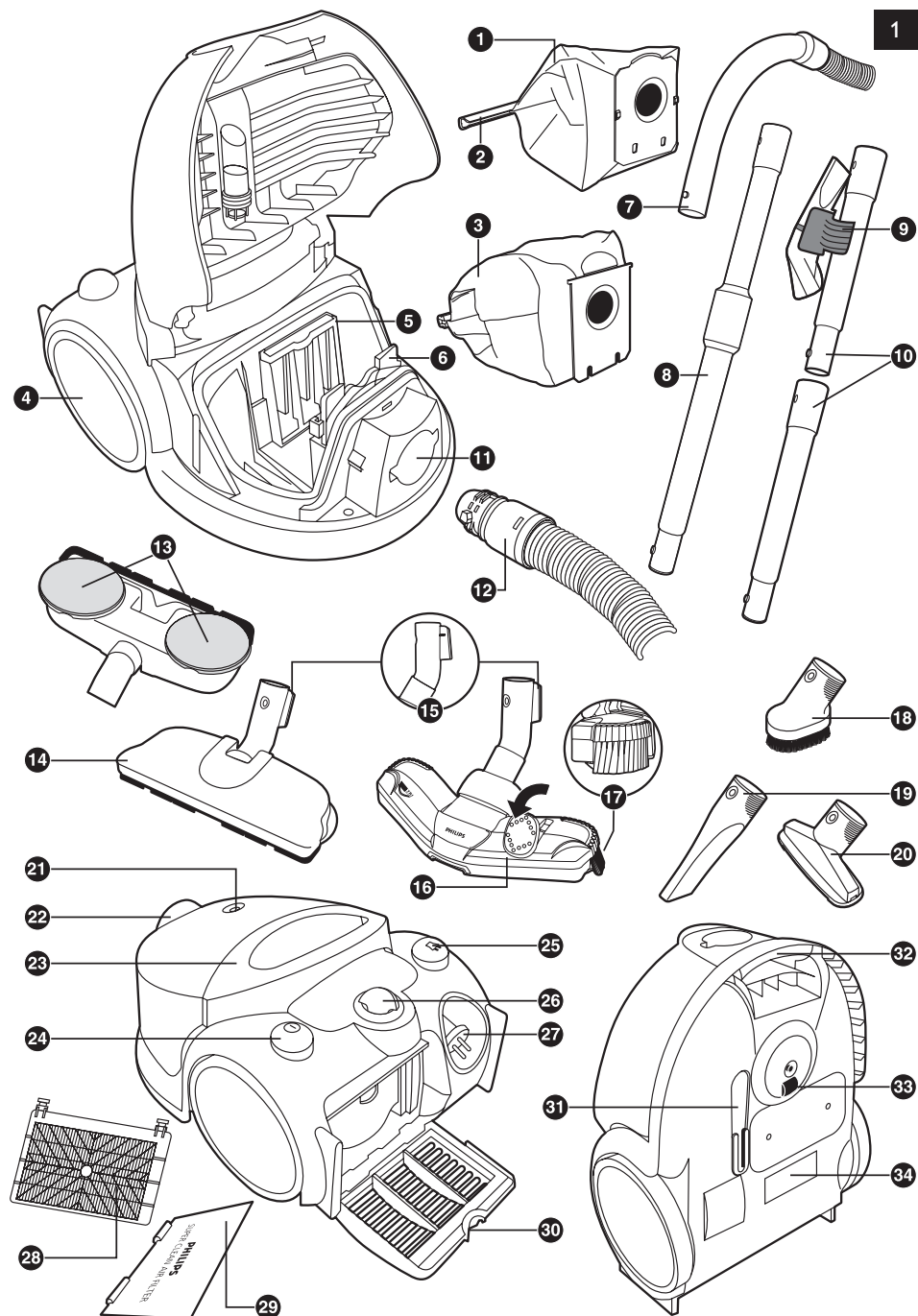


FC8439 - FC8432



PHILIPS





General description (Fig. 1)

- 1 Reusable dustbag
- 2 Removable strip
- 3 Paper dustbag
- 4 Rear wheels
- 5 Motor Protection Filter
- 6 Dustbag holder
- 7 Hose with handgrip
- 8 Telescopic tube (FC8439/8438/8437/8436/8434/8433 only)
- 9 Accessory clip
- 10 Tube parts (FC8432 only)
- 11 Hose connection hole
- 12 Hose with handgrip
- 13 Super Parquet nozzle polishing pads
- 14 Super Parquet nozzle (FC8439 only)
- 15 Parking ridge
- 16 Tri-Active nozzle
- 17 Side brush
- 18 Small brush (FC8439/8438 only)
- 19 Crevice tool
- 20 Small nozzle
- 21 Dustbag-full indicator
- 22 Dustbag compartment cover
- 23 Top handle
- 24 On/off button
- 25 Cord rewind button
- 26 Suction power knob
- 27 Mains plug
- 28 Super Clean Air HEPA Filter (FC8438 only)
- 29 Super Clean Air Filter (FC8439/8437/8436/8434/8433/8432 only)
- 30 Filter grille
- 31 Storage position
- 32 Front handle
- 33 Castor wheel
- 34 Type plate

Important

Read this user manual carefully before you use the appliance and save it for future reference.

- Check if the voltage indicated on the appliance corresponds to the local mains voltage before you connect the appliance.
- Do not use the appliance if the plug, the cord or the appliance itself is damaged.
- If the mains cord is damaged, you must have it replaced by Philips, a service centre authorised by Philips or similarly qualified persons in order to avoid a hazard.
- Keep the appliance out of the reach of children.
- Never suck up water or any other liquid. Never suck up flammable substances and do not suck up ashes until they are cold.
- Do not point the hose, the tube or any other accessory at the eyes or ears nor put it in your mouth when it is connected to the vacuum cleaner and the vacuum cleaner is switched on.
- When you use the vacuum cleaner to vacuum ashes, fine sand, lime, cement dust and similar substances, the pores of the dustbag become clogged. As a result, the dustbag-full indicator will indicate that the dustbag is full. Replace the dustbag, even if it is not full yet (see chapter 'Replacement').

- Never use the appliance without the Motor Protection Filter. This damages the motor and shortens the life of the appliance.
- Only use Philips s-bag™ double-layer paper dustbags or the reusable dustbag, if provided.

Electromagnetic fields (EMF)

This Philips appliance complies with all standards regarding electromagnetic fields (EMF). If handled properly and according to the instructions in this user manual, the appliance is safe to use based on scientific evidence available today.

Preparing for use

Connecting accessories

Hose

- 1 To connect the hose to the appliance, push it into the appliance and turn it clockwise (Fig. 2).
- 2 To disconnect the hose from the appliance, turn it anticlockwise and pull it out of the appliance.

Tube

Conical coupling (specific types only)

- 1 To connect the tube to the handgrip of the hose, insert the narrow section into the wider section while turning a little (Fig. 3).
 - 2 To disconnect the tube from the handgrip, pull while turning a little.
- Use the same method connect and disconnect the nozzles.

Button coupling (specific types only)

- 1 To connect the tube to the handgrip, press the spring-loaded lock button on the handgrip (1) and insert the handgrip into the tube (2). Fit the spring-loaded lock button into the opening in the tube ('click') (Fig. 4).
- 2 To disconnect the tube from the handgrip, press the lock button and pull the handgrip out of the tube.

Use the same method to connect and disconnect the nozzles.

Telescopic tube (specific types only)

- 1 Adjust the tube to the length you find most comfortable during vacuum cleaning (Fig. 5).

Nozzles

Tri-Active nozzle

The Tri-Active nozzle is a multi-purpose nozzle for carpets and hard floors.

- The side brushes catch more dust and dirt at the sides of the nozzle and allow you to clean better along furniture and other obstacles (Fig. 6).
- The opening at the front of the nozzle allows you to vacuum larger particles (Fig. 7).

- 1 Connect the Tri-Active nozzle to the tube.
- 2 Hard floor setting: push the rocker switch on top of the nozzle with your foot to make the brush strip come out of the housing. At the same time, the wheel is lifted to prevent scratching and to increase manoeuvrability (Fig. 8).
- 3 Carpet setting: push the rocker switch again to make the brush strip disappear into the nozzle housing. The wheel is lowered automatically (Fig. 9).

Crevice tool, small nozzle and small brush (specific types only)

- 1 Connect the crevice tool, small nozzle or small brush directly to the handgrip or to the tube.

Accessory clip (specific types only)

The accessory clip can simply be snapped onto the tube.

- The crevice tool and the small nozzle can be snapped onto the clip (Fig. 10).

Using the appliance**Vacuuming**

- 1 Pull the cord out of the appliance and put the mains plug in the wall socket (Fig. 11).
- 2 Push the on/off button on top of the appliance with your foot to switch on the appliance.
- 3 The appliance can be carried in two ways:
 - You can carry the vacuum cleaner vertically by the handle on the front of the appliance (Fig. 12).
 - You can carry the vacuum cleaner horizontally by the handle on top of the appliance.

Adjusting suction power

You can adjust the suction power while vacuum cleaning.

- 1 Adjust the suction power with the electronic suction power knob (Fig. 13).
 - Turn the knob to MAX for maximum suction power (Fig. 14).
 Use maximum suction power to vacuum very dirty carpets and hard floors.
 - Turn the knob to MIN for minimum suction power.
 Use minimum suction power to vacuum curtains, table carpets, etc.

Storage

- 1 Switch off the appliance and remove the mains plug from the wall socket.
- 2 Press the cord rewind button to rewind the mains cord (Fig. 15).
- 3 Put the appliance in upright position and insert the ridge on the nozzle into the slot to attach the nozzle to the appliance (Fig. 16).
- 4 Always put the Tri-Active nozzle in the carpet setting when you store it and prevent the side brushes from becoming bent (Fig. 9).

Replacement

Always unplug the appliance before you replace or empty the dustbag and before you replace the filters.

Replacing the paper dustbag

- Replace the dustbag as soon as the dustbag-full indicator has changed colour permanently, i.e. even when the nozzle is not placed on the floor (Fig. 17).
- 1 Switch off the appliance and open the dustbag compartment cover (Fig. 18).
 - 2 Push the dustbag holder backwards (Fig. 19).
 - 3 Pull the cardboard tag upwards to remove the full dustbag from the holder. The dustbag is sealed automatically (Fig. 20).
 - 4 Slide the cardboard front of the new dustbag into the two grooves of the dustbag holder. Press it down as far as possible (Fig. 21).

5 Pull the dustbag holder forwards ('click') (Fig. 22).

If you have not inserted a dustbag, you cannot close the dustbag compartment cover:

Emptying the reusable dustbag

If provided, you can use the reusable dustbag instead of paper dustbags. The reusable dustbag can be used and emptied repeatedly. To empty the reusable dustbag:

- 1** Remove the reusable dustbag in the same way as described for paper dustbags.
- 2** Remove the clip by sliding it off the dustbag sideways.
- 3** Shake out the contents in to a dustbin.
- 4** Close the dustbag by sliding the clip back onto the bottom edge of the dustbag.
- 5** Reinsert the reusable dustbag in the same way as described for paper dustbags

Replacing filters**Motor Protection Filter**

Replace the Motor Protection Filter once a year.

- 1** Switch off the appliance and open the cover. Remove the filter.
- 2** Insert a new filter into the holder with the white side pointing towards the dustbag compartment (Fig. 23).

Super Clean Air Filter (specific types only)

Replace the Super Clean Air Filter every 6 months.

- 1** Open the grille at the back of the appliance and remove it (Fig. 24).
- 2** Remove the old filter. Place the bottom edge of the new filter properly behind the ridges on the inside of the grille (1). Then push the top of the filter down into the grille (2) (Fig. 25).
- 3** Reattach the grille to the vacuum cleaner. First hook the bottom edge of the grille into the appliance (1) and then push the grille towards the appliance (2) until it snaps home.

Super Clean Air HEPA Filter (specific types only)

- Instead of the Super Clean Air Filter, some types are equipped with the special Super Clean Air HEPA Filter. This filter not only removes household dust, but also harmful microscopic vermin.
- Replace the Super Clean Air HEPA Filter every 6 months.

- 1** Open the filter grille and remove the Super Clean Air HEPA Filter.
- 2** Place the new filter behind the brackets. Make sure that the Philips logo on the filter is visible in the bottom right-hand corner (Fig. 26).
- 3** Close the filter grille.

Obtaining replacement items

If you have any difficulties obtaining dustbags or filters for this appliance, please contact the Philips Customer Care Centre in your country or consult the worldwide guarantee leaflet.

Dustbags

Philips Classic s-bag TM paper dustbags are available under type number FC8021.

Filters

Two Super Clean Air Filters and one Motor Protection Filter are available under type number FC8032.

Super Clean Air HEPA Filters are available under type number FC8044.

Environment

- Do not throw away the appliance with the normal household waste at the end of its life, but hand it in at an official collection point for recycling. By doing this, you help to preserve the environment (Fig. 27).

Guarantee & service

If you need information or if you have a problem, please visit the Philips website at www.philips.com or contact the Philips Customer Care Centre in your country (you find its phone number in the worldwide guarantee leaflet). If there is no Customer Care Centre in your country, go to your local Philips dealer or contact the Service Department of Philips Domestic Appliances and Personal Care BV.

Troubleshooting

- 1 The suction power is insufficient.
 - Make sure the suction power knob is in maximum position.
 - Perhaps the dustbag is full. Replace the paper dustbag or empty the cotton dustbag.
 - Perhaps the filters are dirty. Replace the filters.
 - The nozzle, tube or hose may be blocked up. To remove the obstruction, disconnect the blocked-up item and connect it (as far as possible) the other way around. Switch on the vacuum cleaner to force the air through the blocked-up item in opposite direction (Fig. 28).

一般说明 (图 1)

- 1 循环使用集尘袋
- 2 可拆卸封条
- 3 纸质集尘袋
- 4 后轮
- 5 马达保护滤网
- 6 集尘袋固定架
- 7 带握把软管
- 8 伸缩式吸管 (仅限 FC8439/8438/8437/8436/8434/8433)
- 9 附件夹
- 10 硬管 (仅限 FC8432)
- 11 软管接口
- 12 带握把软管
- 13 洁旋风吸嘴纤维软垫
- 14 洁旋风吸嘴 (仅限 FC8439)
- 15 摆放夹片
- 16 全方位清洁吸尘嘴
- 17 边刷
- 18 毛刷吸嘴 (仅限 FC8439/8438)
- 19 缝隙工具
- 20 小号吸嘴
- 21 集尘袋已满指示灯
- 22 集尘袋仓盖
- 23 顶部把手
- 24 开/关钮
- 25 电源线回卷按钮
- 26 吸力控制旋钮
- 27 电源插头
- 28 HEPA 高效能过滤网 (仅限 FC8438)
- 29 高效能过滤网 (仅限 FC8439/8437/8436/8434/8433/8432)
- 30 过滤器栅格
- 31 存放位置
- 32 前方握把
- 33 脚轮
- 34 型号牌

注意事项

使用产品之前，请仔细阅读本用户手册，并妥善保管以供日后参考。

- 在将产品连接电源之前，请先检查产品所标电压与当地的供电电压是否相符。
- 如果插头、电源线或产品本身受损，请勿再使用本产品。
- 如果电源软线损坏，为避免危险，必须由制造厂或其维修部或厂方认可的专职人员来更换。
- 请将产品放置在儿童接触不到的地方。
- 切勿吸取水或其它液体。切勿吸取易燃物质，并且不要吸取未冷却的灰烬。

- 当连接到真空吸尘器并且真空吸尘器已打开时，请勿将软管、硬管或任何其它附件指向眼睛或耳朵，也不要放在口中。
- 在使用真空吸尘器吸收灰尘、细沙、石灰、水泥灰和类似的物质时，集尘袋的袋孔可能发生阻塞。因此，集尘袋已满指示灯将显示集尘袋已满。这时，请更换集尘袋，即使集尘袋并未装满（见“更换”一章）。
- 切勿在没有马达保护滤网的情况下使用本产品。这会损坏马达并缩短产品的使用寿命。
- 如有提供，只能使用飞利浦的 s-bag™ 双层纸制集尘袋或循环使用集尘袋。

电磁场 (EMF)

这款飞利浦产品符合关于电磁场 (EMF) 的相关标准。据目前的科学证明，如果正确使用并按照本用户手册中的说明进行操作，本产品是安全的。

使用准备

连接附件

软管

- 1 要将软管装到吸尘器上，请将管端插入吸尘器的孔中，并顺时针方向转动。（图 2）
- 2 要将软管从吸尘器上拆下，请将管端逆时针方向转动，并拉出软管。

硬管

圆锥型连结（仅限于特定机型）

- 1 要将硬管与软管的握把连接起来，应将窄的部分插入宽的部分并且稍微转一下。（图 3）
 - 2 要从握把取下硬管，请在拉动硬管的同时稍作旋转。
- 请通过同样的方法来连接及拆卸吸嘴。

按钮连结（仅限于特定机型）

- 1 将硬管与握把连接时，按下握把 (1) 上的弹簧锁按钮，将握把插入硬管 (2)。将弹簧锁按钮对准，插入硬管的开口（会听到咔哒一声）。（图 4）
 - 2 要将握把从硬管中拉出，按下锁定按钮，将握把从硬管中拔出。
- 请通过同样的方法来连接及拆卸吸嘴。

伸缩管（仅限于特定机型）

- 1 将硬管调整到吸尘过程中感觉最舒适的长度。（图 5）

吸嘴

全方位清洁吸尘嘴

Tri-Active 吸尘嘴是用于清洁地毯和硬质地板的一种多用途吸尘嘴。

- 吸尘嘴侧面的侧毛刷可以清洁更多灰尘和污垢，让您沿家具和其他障碍物边缘进行清洁。（图 6）
- 吸尘嘴正面的开口允许吸取体积较大的灰尘微粒。（图 7）

- 1 将 Tri-Active 吸嘴连接到硬管上。

2 硬质地板设置：用脚推动吸尘嘴顶部的按钮使刷条外翻，同时，轮子将伸出，以防止擦伤地板并提高灵活性。(图 8)

3 地毯设置：再次推动吸尘嘴顶部的按钮使刷条没入吸尘嘴机壳中。轮子将自动降低。(图 9)

缝隙吸嘴、小号吸嘴和毛刷（仅限于特定机型）

1 将缝隙吸嘴、小号吸嘴和毛刷直接连接到握把或吸管上。

附件夹（仅限于特定机型）

附件夹可简单地扣合在硬管上。

- 缝隙工具和小号吸嘴可扣合在附件夹上。(图 10)

使用本产品

吸尘

1 将电源线从吸尘器中拉出，并将电源插头插入插座。(图 11)

2 用脚推动产品上的 on/off（开/关）按钮来开启电源。

3 产品可用两种方法搬运：

- 可用产品前面的手柄竖直地提起真空吸尘器。(图 12)
- 可用产品顶端的手柄水平地提起真空吸尘器。

调整吸力

在进行清洁时，您可以调整吸尘器的吸力。

1 使用电子吸力调整旋钮调整吸力。(图 13)

- 将旋钮调到MAX时，是最大吸力。(图 14)

对于特别脏的地毯和硬地板，可用最大吸力吸尘。

- 将旋钮调到 MIN 时，是最小吸力。

清洁门帘、台布或其他物品时，可用最小吸力。

存放

1 关闭吸尘器的电源，从插座中拔下电源插头。

2 按下电源线回卷按钮将电线回卷到吸尘器中。(图 15)

3 将产品竖直起来并将吸嘴上的夹片插入插槽，以便将吸嘴安装到产品上。(图 16)

4 存放前，必须先将全方位清洁吸嘴处于地毯设置，以免侧面的毛刷被弯曲。(图 9)

更换

在更换或清空集尘袋以及更换过滤网之前，请始终断开产品的电源。

更换纸质集尘袋

- 在集尘袋已满指示灯的颜色改变时（在吸嘴没有紧贴地板的情况下），请立即更换集尘袋。(图 17)

1 关闭产品电源并打开集尘袋仓盖。(图 18)

2 将集尘袋固定架向后推。(图 19)

3 向上拉起纸板片将装满灰尘的集尘袋取掉。集尘袋会自动封闭。(图 20)

4 将新的集尘袋的纸板片套入集尘袋固定架上的两个狭槽中。尽量向下按。(图 21)

5 向前推集尘袋固定架（听到咔哒声）。(图 22)

如果尚未插入集尘袋，将无法关闭集尘袋仓盖。

清空可循环使用集尘袋

如有提供，您可以使用循环使用集尘袋，代替纸质集尘袋。循环使用集尘袋可于灰尘倒空后重复使用。倒空循环使用集尘袋时：

- 1** 像取掉纸质集尘袋一样取掉可循环使用集尘袋。
- 2** 将夹子从集尘袋侧面滑下，取下夹子。
- 3** 通过摇动倒出里面的积尘。
- 4** 将夹子安装回集尘袋下端，封闭集尘袋。
- 5** 像重新放入纸质集尘袋一样重新放入可循环使用集尘袋

更换过滤网

马达保护滤网

每年更换一次马达保护滤网。

- 1** 关闭产品电源并打开机盖。取出滤网。
- 2** 让白边朝向集尘袋仓，将新过滤网插入固定架。(图 23)

高效能过滤网（仅限于特定机型）

每 6 个月更换一次高效能过滤网。

- 1** 打开产品背后的滤网格栅，并将其拆下。(图 24)
- 2** 取下旧的滤网。将新过滤网的底部边缘适当地放在格栅内侧的凸缘后面 (1)。然后将过滤网的顶部向下推入格栅 (2)。(图 25)
- 3** 将滤网格栅重新装入真空吸尘器。首先将滤网格栅的底边钩进产品 (1)，向产品的方向推动格栅 (2) 直到其扣合到位。

HEPA 高效能过滤网（仅限于特定机型）

- 除了高效能过滤网之外，有些型号还配备了特殊的 HEPA 高效能过滤网。这种过滤网不但能去除家庭内的灰尘，而且能去除有害的显微寄生虫。
- 每 6 个月更换一次 HEPA 高效能过滤网。

- 1** 打开过滤网格栅，取下高效能过滤网。
- 2** 将新的滤网放在固定架后面。确保过滤网上的飞利浦标志可从右下角看到。(图 26)
- 3** 关闭滤网格栅。

获取替换物品

如果您在购买本产品的集尘袋或滤网时遇到任何困难，请和您所在国家的飞利浦客户服务中心联系，或参阅全球保证书。

集尘袋

飞利浦 Classic s-bag™ 纸质集尘袋的型号是 FC8021。

过滤网

FC8032 型有 2 个高效能过滤网和 1 个马达保护滤网。

HEPA 高效能过滤网的型号是 FC8044。

环保

- 弃置产品时，请不要将其与一般生活垃圾堆放在一起；应将其交给官方指定的回收中心。这样做有利于环保。(图 27)

保修与服务

如果您需要详细信息或有任何问题，请浏览飞利浦网站，地址为 www.philips.com。您也可以与贵国的飞利浦顾客服务中心联系（您可以从全球保修卡中找到电话号码）。如果贵国没有飞利浦顾客服务中心，请与当地的飞利浦经销商或与飞利浦家庭小电器的维修中心联系。

故障种类和处理方法

- 1 吸力不足。
 - 确保吸力控制旋钮在最大位置。
 - 可能集尘袋已满。更换纸质集尘袋或清空棉质集尘袋。
 - 可能过滤网脏了。请更换过滤网。
 - 检查吸嘴、硬管、软管是否被阻塞。要清除阻塞物，请将阻塞的部分拆下，并将它反向连接（尽可能离远一些）。打开吸尘器的电源，强迫气流反方向通过阻塞的部位。(图 28)

PHILIPS

产品：飞利浦家用
真空卧式吸尘器

型号：FC8432
额定电压：220V~
额定频率：50Hz
额定输入功率：1500 W
生产日期：请见产品底部
产地：中国



飞利浦家电（苏州）有限公司
中国苏州新区玉山路
邮政编码：215011
电话：0512-68253516

全国顾客服务热线：4008 800 008

本产品根据GB4706.1-2005, GB4706.7-2004, GB4343.1-2003及GB17625.1-2003制造

PHILIPS

产品：飞利浦家用
真空卧式吸尘器

型号：FC8437, FC8439
额定电压：220V~
额定频率：50Hz
额定输入功率：1600 W
生产日期：请见产品底部
产地：中国



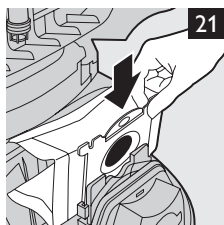
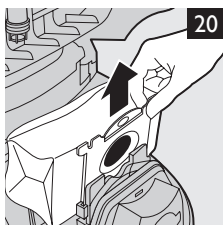
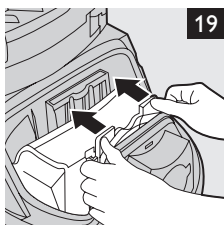
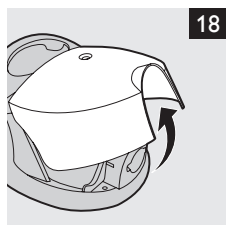
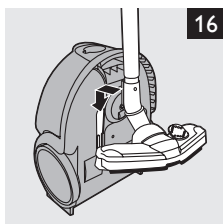
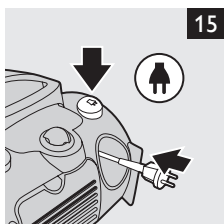
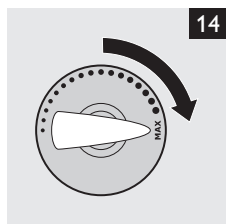
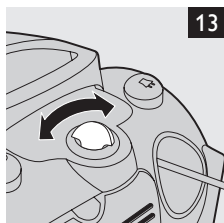
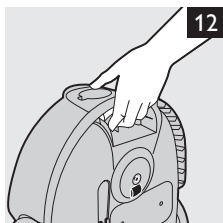
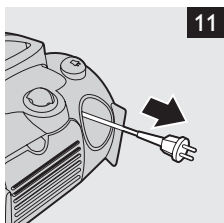
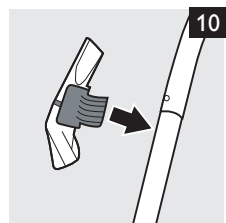
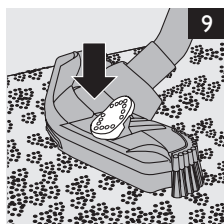
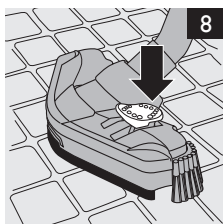
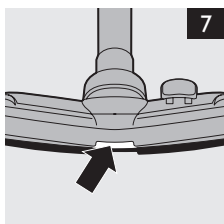
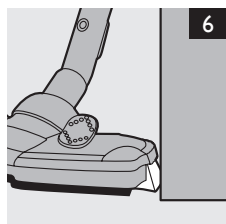
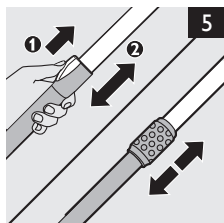
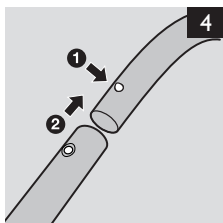
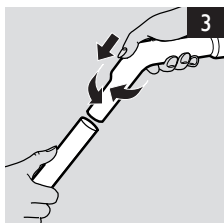
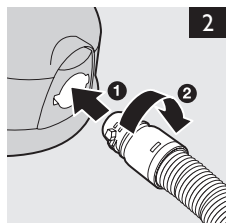
飞利浦家电（苏州）有限公司
中国苏州新区玉山路
邮政编码：215011
电话：0512-68253516

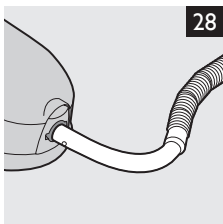
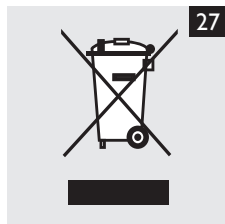
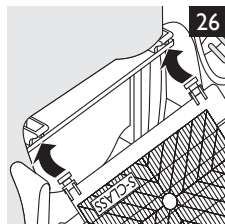
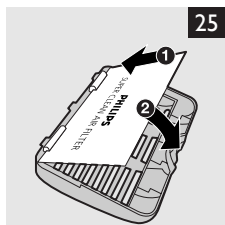
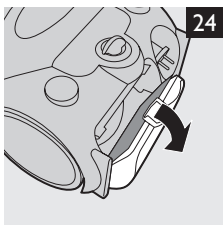
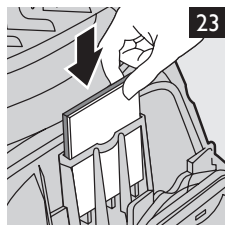
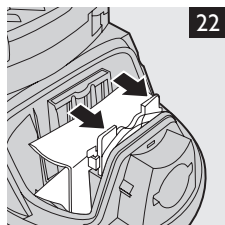
全国顾客服务热线：4008 800 008

本产品根据GB4706.1-2005, GB4706.7-2004, GB4343.1-2003及GB17625.1-2003制造

请妥善保管本使用说明书

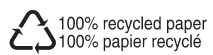
发行日期：2006/11/08







www.philips.com



4222.003.3295.2