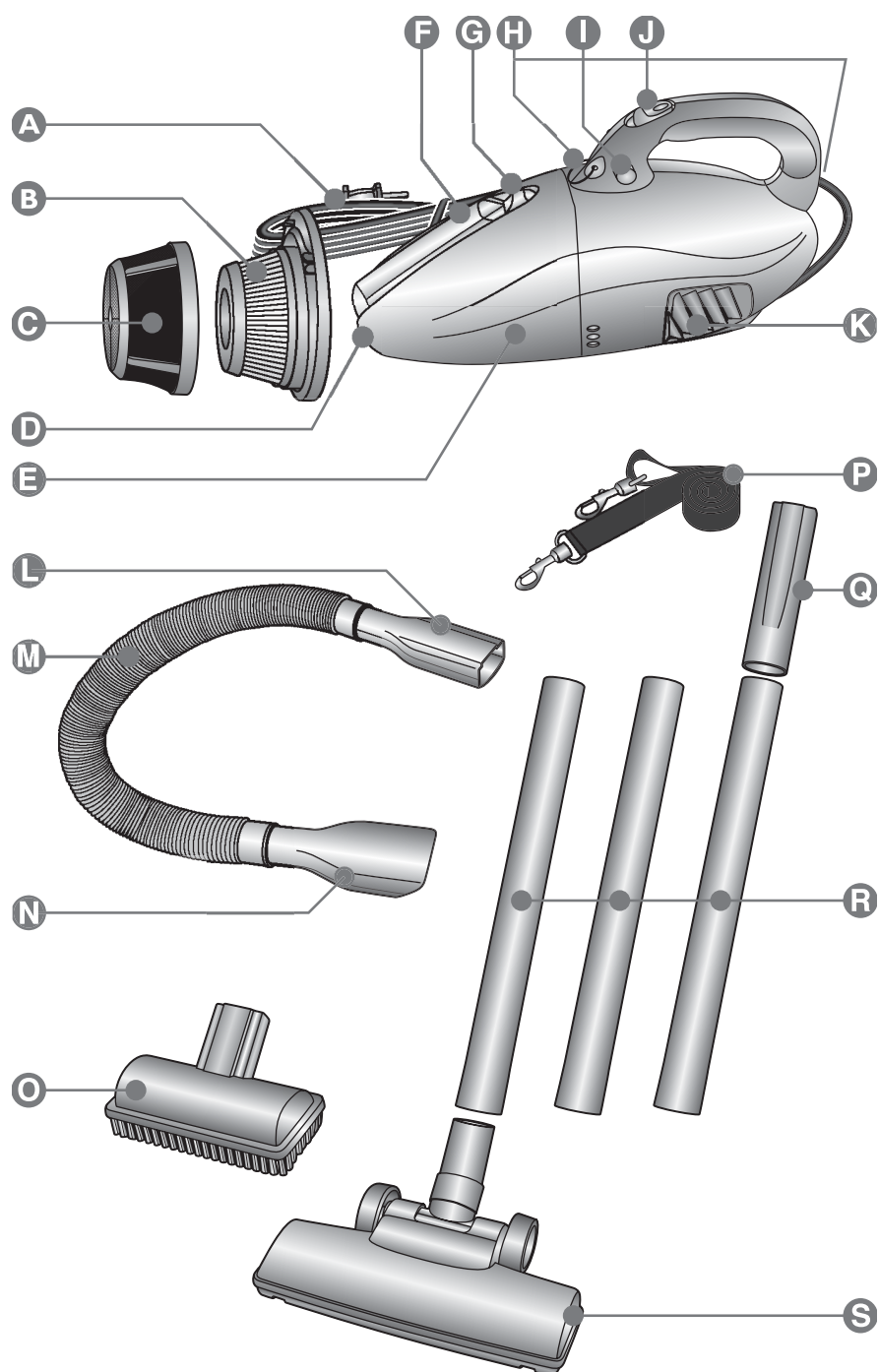


Vacuum Cleaner

ENGLISH 3 - 5

简体中文 6 - 8

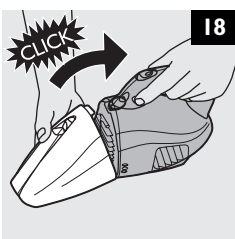
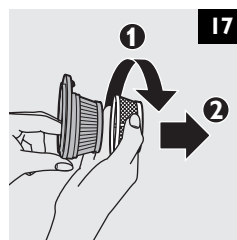
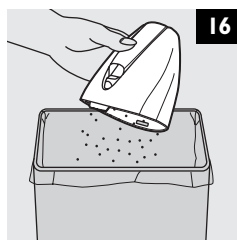
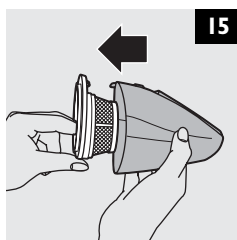
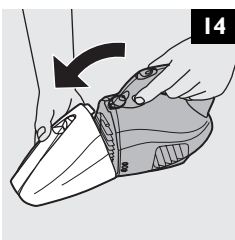
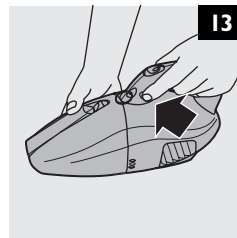
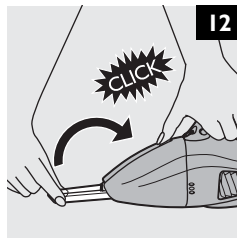
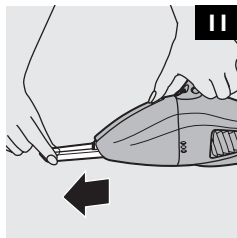
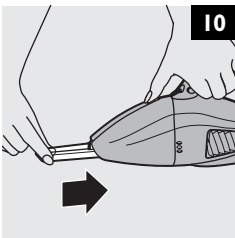
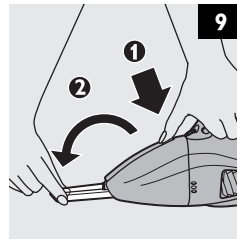
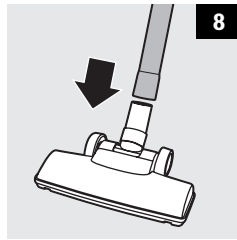
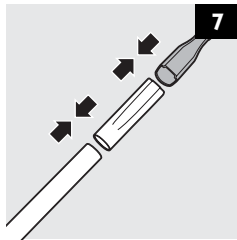
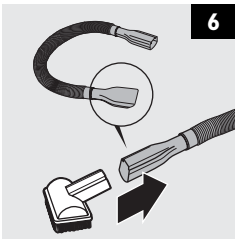
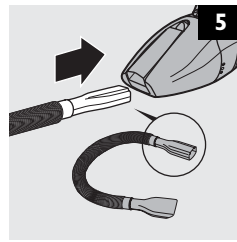
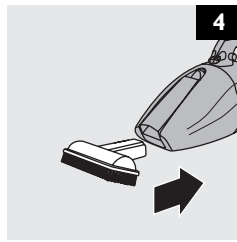
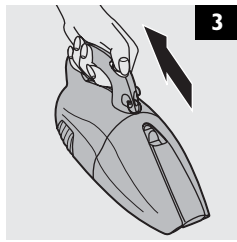
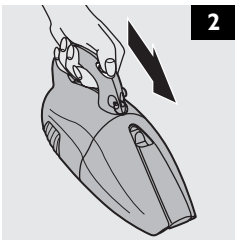
FC6048
/01



I

使用产品前请仔细阅读这些使用说明，
同时妥善保管以备将来参考。

PHILIPS



General description (fig. 1)

- | | |
|--|---------------------------------|
| A Mains cord | K Exhaust air openings |
| B Filter holder | L Appliance end of hose |
| C Filter | M Hose |
| D Appliance nozzle | N Attachment end of hose |
| E Dust compartment | O Brush tool |
| F Integrated crevice tool | P Shoulder strap + clasp |
| G Crevice tool release button | Q Connector |
| H Shoulder strap holes | R Tube parts |
| I Dust compartment release button | S Nozzle |
| J On/off slide | |

Important

Read these instructions for use carefully before using the appliance and save them for future reference.

- ▶ Check if the voltage indicated on the appliance corresponds to the local mains voltage before you connect the appliance.
- ▶ Do not use the appliance if the plug, the cord or the appliance itself is damaged. Take it to an authorised Philips service centre for repair.
- ▶ If the mains cord is damaged, it must be replaced by Philips, a service centre authorised by Philips or similarly qualified persons in order to avoid a hazard.
- ▶ Keep the appliance out of the reach of children.
- ▶ Never suck up water or any other liquid. Never suck up flammable substances and do not suck up ashes until they are cold.
- ▶ Never immerse the vacuum cleaner in water.
- ▶ Never block the exhaust air openings during vacuuming.
- ▶ Do not use the vacuum cleaner without dust compartment and/or filter.
- ▶ Do not point the hose at the eyes or ears nor put it in your mouth when the vacuum cleaner is switched on and the hose is connected to the vacuum cleaner.
- ▶ Always switch the vacuum cleaner off after use.
- ▶ Always switch the appliance off before connecting or disconnecting accessories.
- ▶ Remove the plug from the wall socket before cleaning the appliance.

Preparing for use

You can attach the shoulder strap to the appliance for extra convenience. Connect the clasp to the front and back of the appliance. See figure 1 for the location of the shoulder strap holes.

- 1** Insert the plug into the wall socket.

Using the appliance

- 1** Push the on/off slide forwards to switch the appliance on (fig. 2).
- 2** Push the on/off slide backwards to switch the appliance off (fig. 3).

Always switch the appliance off before connecting or disconnecting accessories.

Brush tool

The brush tool can be used to clean delicate surfaces.

- ▶ Attach the brush tool to the appliance nozzle (fig. 4).

Hose

You can use the hose for extended reach with the brush tool.

- 1 Insert the appliance end of the hose into the appliance nozzle (fig. 5).
- 2 Insert the brush tool into the attachment end of the hose (fig. 6).

Tube and nozzle

The nozzle can be used on either carpets or hard floors.

- 1 Connect the tube parts to each other by inserting the narrow section into the wider section while turning it a little.
- 2 Connect the tube to the hose by means of the connector (fig. 7).
- 3 Attach the nozzle to the other end of the tube (fig. 8).

Integrated crevice tool

With the crevice tool you can quickly and conveniently clean hard-to-reach places.

- 1 Push the release slide towards the handle to release the crevice tool and fold it out with your free hand (fig. 9).
- 2 Push the crevice tool into the appliance nozzle as far as possible to secure it (fig. 10).

To store the crevice tool on the body of the appliance:

- 3 Pull the crevice tool out of the appliance nozzle (fig. 11).
- 4 Fold the crevice tool back onto the body of the appliance and snap it home ('click') (fig. 12).

Cleaning

Always unplug the appliance before cleaning it.

- 1 Clean the appliance with a damp cloth.

Emptying the dust compartment.

Make sure you empty the dust compartment and clean the filter regularly.

Always unplug the appliance before emptying the dust compartment and cleaning the filter.

- 1 Press the dust compartment release button (fig. 13).
- 2 Remove the dust compartment from the appliance (fig. 14).
- 3 Pull the filter holder out of the dust compartment (fig. 15).
- 4 Empty the contents of the dust compartment into a dustbin (fig. 16).
- 5 Remove the filter from the holder by turning it anticlockwise (fig. 17).
- 6 Clean the filter.

Use a brush or a normal vacuum cleaner if the filter is very dirty.

- 7 Put the filter back in the holder and turn it clockwise.
- 8 Place the filter holder back into the dust compartment.
- 9 Reattach the dust compartment by aligning the slot on the dust compartment with the projecting part of the appliance. First attach the bottom of the dust compartment and then push the top of the dust compartment towards the appliance until it locks into place ('click') (fig. 18).

Environment

To make recycling possible, the plastic parts used for this appliance have been coded. The cardboard packaging has been made of recycled material and is fully recyclable.

Guarantee & service

If you need information or if you have a problem, please visit the Philips website at www.philips.com or contact the Philips Customer Care Centre in your country (you will find its phone number in the worldwide guarantee leaflet). If there is no Customer Care Centre in your country, turn to your local Philips dealer or contact the Service Department of Philips Domestic Appliances and Personal Care BV.

Troubleshooting

Problem	Solution
The vacuum cleaner does not work.	Make sure that you have inserted the plug properly into the wall socket.
	Take the appliance to your dealer or a service centre authorised by Philips for examination.
The vacuum cleaner does not vacuum properly.	Make sure that you have attached the dust compartment properly to the appliance.
	Empty the dust compartment (see chapter 'Cleaning').
	Check if the filter is clogged. If so, remove the filter holder and clean the filter (see chapter 'Cleaning').
Dust escapes from the vacuum cleaner.	Check if the dust compartment is full. If so, empty it.
	Make sure you have attached the dust compartment properly to the appliance (see chapter 'Cleaning').
	Make sure the filter holder has been inserted properly into the dust compartment (see chapter 'Cleaning').
The vacuum cleaner does not work properly when one or more accessories (hose, tube, brush tool or crevice tool) are attached.	Check whether one of the accessories is clogged. If so, remove the obstruction.
	Check if the dust compartment is full. If so, empty it.
	Check if the filter is clogged. If so, use a brush or a standard vacuum cleaner to clean the filter.

产品图示 (图 1)

- | | |
|-------------------|---------------------|
| A 电源线 | K 排气口 |
| B 过滤网支架 | L 软管连接吸尘器的一端 |
| C 过滤网 | M 软管 |
| D 吸尘器吸嘴 | N 软管连接附件的一端 |
| E 积尘盒 | O 毛刷吸嘴 |
| F 缝隙吸嘴 | P 背带和搭扣 |
| G 缝隙吸嘴拆卸按钮 | Q 连接点 |
| H 背带孔 | R 硬管 |
| I 积尘盒拆卸按钮 | S 地板吸嘴 |
| J 开关 | |

注意事项

使用产品前，请仔细阅读本使用说明书，并妥善保管以备将来参考。

- ▶ 连接电源之前，请务必检查本产品上所标电压与当地电压是否一致。
- ▶ 如果插头，电线或产品本身损坏，请勿使用。请将其送往经授权的飞利浦顾客服务中心修理。
- ▶ 如果电源线损坏，则必须由飞利浦，或经飞利浦授权的顾客服务中心或同等资格的人员更换，确保安全。
- ▶ 本产品应保存在儿童无法触及之处。
- ▶ 切勿吸取水或其它液体。切勿吸取易燃物质，并且不要吸取未冷却的灰烬。
- ▶ 千万不要将吸尘器浸入水中。
- ▶ 在吸尘时，千万不要阻塞排气口。
- ▶ 未装妥积尘盒或过滤网时，不要使用吸尘器。
- ▶ 在吸尘器电源打开并且软管与吸尘器相连时，不要将软管指向双眼或耳朵，也不要将其放在口中。
- ▶ 使用后，务必切断吸尘器的电源。
- ▶ 连接或拆除附件之前，务必切断本产品的电源。
- ▶ 清洁本产品之前，务必将插头从墙上的插座中拔出。

准备使用

可将背带连接到本产品上，这样使用时会更舒服。将搭扣连接到本产品的前后两端。背带孔的位置见图一。

- 1** 插头插入墙上的插座。

使用产品

- 1** 向前推动开关，可接通本产品的电源 (图 2)
- 2** 向后推动开关，可切断本产品的电源 (图 3)。

连接或拆除附件之前，务必切断本产品的电源。

毛刷吸嘴

您可以使用毛刷吸嘴清洁细致表面。

- ▶ 把毛刷吸嘴连接到吸尘器上 (图 4)

软管

您可以使用软管延伸毛刷吸嘴的接触面。

1 把软管连接吸尘器的一端插入吸尘器吸嘴(图 5)

2 把毛刷吸嘴插入软管连接附件的一端(图 6)

硬管和地板吸嘴

地板吸嘴可以用于地毯或硬地板。

1 将硬管窄的部分插入宽的部分，同时稍加旋转。

2 通过接口将软管和硬管连接(图 7)

3 将地板吸嘴连接到硬管另一端(图 80)

综合缝隙吸嘴

用缝隙吸嘴您可以迅速方便地清洁难以接触到的地方。

1 把拆卸滑钮推向把手以打开缝隙吸嘴并用另一只手翻开缝隙吸嘴(图 9)

2 把缝隙吸嘴塞入吸尘器吸嘴使其卡紧(图 10)

把缝隙吸嘴与吸尘器一起存放：

3 把缝隙吸嘴从吸尘器吸嘴中拉出(图 11)

4 合拢缝隙吸嘴，把它放回吸尘器并压扣到位(图 12)

清洁

清洁本产品之前，务必将插头拔掉。

1 用湿布擦拭本产品。

倒空积尘盒。

必须定期倒空积尘盒，并清洁过滤网。

在进行倒空积尘盒及清洁过滤网操作之前，务必将插头拔掉。

1 按下积尘盒拆卸按钮(图 13)

2 从吸尘器上卸下积尘盒(图 14)

3 从积尘盒中取出过滤网支架(图 15)

4 将积尘盒中的尘垢倒入垃圾桶(图 16)

5 逆时针旋转，从支架上卸下过滤网(图 17)

6 清洁过滤网。

如果过滤网很脏，可用毛刷或普通吸尘器清洁。

7 把过滤网放入支架并顺时针旋转。

8 把过滤网支架放回积尘盒。

9 将积尘盒的槽与吸尘器的突出部份对齐，首先连接积尘盒的底部，然后将积尘盒的顶部推向吸尘器，直到它锁定到位(图 18)

环保

为了回收利用,本产品的塑料部分是有编码的。而纸板包装是采用可回收利用的材料制成的,可完全回收的。

保修与服务

如果您需要更多信息,或者您有任何问题,请浏览飞利浦网站: www.philips.com, 或和您所在国家的飞利浦顾客服务中心联系(您可在全球保修卡上找到服务中心的电话号码)。如果您所在的国家没有任何顾客服务中心,则请和当地的飞利浦经销商或飞利浦家庭小电器的售后服务部联系。

排除故障指南

问题	解决办法
吸尘器不工作	检查是否已将插头插入墙上的插座。 请将本产品送往当地的飞利浦经销商,或经飞利浦授权的顾客服务中心,请他们检查。
吸尘器运作不正常。	检查积尘盒是否适当地安装在吸尘器内。 倒空积尘器(请参阅'清洗一章')。 检查过滤网是否堵塞。如果堵塞,卸下过滤网支架并清洗过滤网(请参阅'清洗一章')。
尘土从吸尘器中溢出。	检查积尘盒是否已满。如果已满,则倒空积尘盒。 检查是否已将积尘盒正确地安装在本产品中(见'清洁'一章)。 确认过滤网支架已正确插入积尘盒(请参阅'清洗'一章)。
吸尘器连接附件(例如软管,硬管,毛刷吸嘴或缝隙吸嘴等)后,不能正常工作。	检查附件是否堵住,如果有杂物堵住,清理杂物。 检查积尘盒是否已满。如果已满,则倒空积尘盒。 检查过滤网是否堵塞。如果堵塞,用毛刷或普通吸尘器清洁过滤网。

PHILIPS

产品 : 飞利浦便携式真空吸尘器
 型号 : FC 6048
 / 01
 额定电压 : 220V ~
 额定频率 : 50Hz
 额定输入功率 : 850瓦
 产地 : 中国
 生产日期 : 请见产品内部



珠海经济特区飞利浦家庭电器有限公司
 中国珠海市三灶镇琴石工业区
 邮政编码: 519040 电话: 0756-7621898

全国顾客免费服务热线: 800 8203 678

本产品根据GB4706.1-1998, GB4706.7-1999, GB4343-1995及
 GB17625.1-2003制造

请妥善保管本使用说明书

发行日期: 2004/10/01