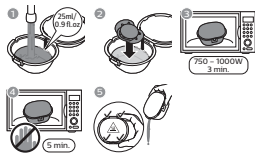


PHILIPS AVENT

FSC

Philips NL9206AD-4
Drachten
4213.354.4280.2
(2020-08-25)



ENGLISH

Sterilizing/carrying case

Before use: Remove tamper-proof closure and any stickers from the case. Wash all items and make sure that they are clean.

Caution: The case, water and soother may still be hot after 5 minutes of cooling. Incorrect water level, microwave power or microwave time can cause improper sterilization and can damage the case or soother. Only use this case with enclosed soother. Keep the case out of reach of children.

Soother

For your child's safety

WARNING!

Inspect carefully before each use, especially when the child has teeth. Pull the soother in all directions. Throw away at the first signs of damage or weakness.

Only use dedicated soother holders tested to EN 12586. Never attach other ribbons or cords to a soother, your child may be strangled by them.

Always make sure your baby uses the correct soother size. Do not soak in water and then put in the freezer. This may weaken the soother. Always use this product under adult supervision.

Before first use: Place soother in boiling water for 5 minutes. Let it cool down and then squeeze any water out of the teat. This is to ensure hygiene.

Before every use: Clean with warm water and mild soap. DO NOT use abrasive cleaning agents. Clean surfaces and your hands thoroughly before contact with sterilized soothers. Replace soother after 4 weeks of use, for safety and hygiene reasons.

If soother becomes lodged in the mouth, DO NOT PANIC; it cannot be swallowed and is designed to cope with such an event. Remove from the mouth as carefully as possible. Never dip the teat in sweet substances or medication, your child may get tooth decay. Do not leave a soother in direct sunlight or near a heat source, or leave in sterilizing solution for longer than recommended, as this may weaken the teat.

简体中文

消毒/收纳盒

使用前的准备工作: 取下收纳盒上的所有保护罩和标签。清洗所有物品，确保清洁。

注意: 冷却 5 分钟后，消毒/收纳盒、水和安抚奶嘴可能仍然会很烫。不当的水位、微波功率或微波时间可能导致消毒不彻底，并会对消毒/收纳盒或安抚奶嘴造成损坏。此消毒/收纳盒只能与随附的安抚奶嘴搭配使用。请将此消毒/收纳盒置于儿童接触不到的地方。

安抚奶嘴

为了宝宝的安全

警告!

每次使用前，请仔细检查安抚奶嘴，尤其是在宝宝长牙后。进行仔细检查。若有明显破损或缺陷，请立即丢弃。仅使用已经过 EN 12586 测试的安抚奶嘴固定架。切勿将其他丝带或绳索缠在安抚奶嘴上，以免使宝宝窒息。请务必确保您的宝宝使用正确大小的安抚奶嘴。请勿将安抚奶嘴浸泡在水中之后，又放入冷冻室。这会降低安抚奶嘴的性能。务必在成人的监督下使用本产品。

首次使用之前: 请将安抚奶嘴置于沸水中浸泡 5 分钟。待水冷却后，挤出奶嘴里的所有水分。这可以保证卫生。

每次使用之前: 用温水和中性肥皂清洗。请勿使用腐蚀性清洁剂。在接触已消毒的安抚奶嘴之前，请彻底洗净您的双手并确保表面干净。出于安全和卫生考虑，安抚奶嘴每使用 4 周后要加以更换。如果安抚奶嘴卡在嘴里，不要惊慌。安抚奶嘴不会被吞下去，其设计已考虑到这种情况。请尽量小心地将安抚奶嘴从宝宝嘴里取出来。请勿将安抚奶嘴浸入甜味物质或药物中，否则宝宝可能会出现蛀牙。请勿将安抚奶嘴置于阳光直射处或热源附近，又或置于消毒溶液中超过建议时间，否则可能会降低奶嘴性能。