

PHILIPS

IPL Hair removal device with SenseIQ

Lumea IPL 8000 Series

SmartSkin Sensor

4 intelligent attachments: body, face, bikini, underarms

Lumea IPL App

Corded use



BRI947/60



Tailored to you with SenseIQ

Enjoy 12 months of hair-free smooth skin*

Enjoy a quick and personalized treatment with our Lumea IPL 8000 Series. SenseIQ technology with smart attachments and Lumea IPL app for long-lasting smooth skin.

Gentle and effective for long-lasting smooth skin

- Treat only 2x a month for fast results
- Developed with dermatologists to be easy and effective
- Extra-long cable for added flexibility while treating

Full solution for face and body

- Full solution for face and body with 4 smart attachments
- Suitable for most skin tones and hair colors

Personalized IPL hair removal treatment

- Gentle and comfortable with SenseIQ
- Optimize your routine with the Philips Lumea IPL app

Highlights

2x a month for fast results



Every 2 weeks to get started — that's half as many treatments as other brands. Followed by touch-ups just once a month. That's it. Covering both lower legs takes 8.5 minutes.

SenseIQ technology



Lumea 8000 Series has five easily adjustable light settings. Our SmartSkin sensor reads your skin tone and helps you find the most comfortable setting. Intelligent attachments adapt treatment for each body area.

Extra-long cable



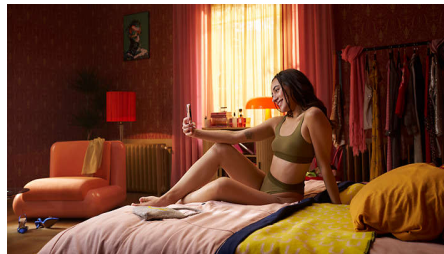
Convenient to use thanks to an extra long cable for easy access and enhanced maneuverability.

4 smart attachments



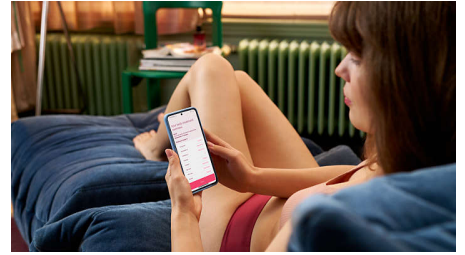
Specially designed attachments perfectly fit the curves of your body and trigger the most effective programs for each body area when they are connected. Face: Flat design and small window with UV filter. Body: Curved inward with a large window. Bikini and Armpit: Curved outward for hard-to-reach areas.

Developed with dermatologists



As a leader in health technology, Philips developed Lumea IPL in consultation with dermatologists, for easy and effective use in the safety of your home. Derived from technology used in professional salons, Lumea IPL offers gentle treatment, even on sensitive areas.

Philips Lumea IPL app



Our free coaching app helps you plan and stick to your treatment schedule, then takes you through each session step by step. Downloaded by more than 2.1 million users.

For most skin and hair types



IPL needs contrast between the pigment in the hair color and the pigment in the skin tone, therefore works on naturally dark blonde, brown and black hair and on skin tones from fair to dark brown (I-V).

Specifications

Technical specs. attachments

Body treatment attachment: Window size: 4.1 cm², Shape: Convex curved, Tailored treatment for body

Face treatment attachment: Window size: 2 cm², extra filter, Shape: Flat, Tailored treatment for face

Bikini treatment attachment: Window size: 3 cm², extra filter, Shape: Concave curved, Tailored treatment for bikini

Underarm treatment attachment: Window size: 3 cm², Shape: Concave curved, Tailored for underarm area

Safety and adjustable settings

Integrated UV filter: Protects skin from UV light

5 light energy settings: Adjustable to your skin type

Integrated safety system: Prevent unintentional flashing

SmartSkin sensor: The right setting on demand

Application mode

Slide and Flash: For quick application

Corded / cordless use: Corded

Stamp and Flash: For treatment on small areas

Technical specifications

High performance lamp: Built to last, 450,000 flashes, equivalent to 39 years of lamp lifetime**

Service

Warranty: 2 years global warranty + 1 extra year of warranty upon product registration within 90 days

Items included

Instructions for use: User manual

Storage: Beauty pouch

Adapter: 19.5V / 4000mA

Application time

Underarms: 2,5 min

Bikini line: 2 min

Face areas: 1,5 min

Lower legs: 8,5 min

