

# PHILIPS



IPL Hair removal  
device with SenseIQ

Lumea IPL 8000  
Series

SmartSkin sensor

4 intelligent attachments: body,  
face, bikini, underarms

Lumea IPL App

Corded use



BRI947/00

## Tailored to you with SenseIQ

Enjoy 18 months of visibly hair-free smooth skin\*

Enjoy a quick and personalised treatment with our Lumea IPL 8000 Series. SenseIQ technology with smart attachments and Lumea IPL app for long-lasting smooth skin.

### **Gentle and effective for long-lasting smooth skin**

- Treat only 2 x a month for fast results
- Developed with dermatologists to be easy and effective
- Extra-long cable for added flexibility while treating

### **Full solution for face and body**

- Full solution for face and body with 4 smart attachments
- Suitable for most skin tones and hair colours

### **Personalised IPL hair removal treatment**

- Gentle and comfortable with SenseIQ
- Optimise your routine with the Philips Lumea IPL app

## Lumea IPL 8000 Series

IPL Hair removal device with SenselQ

BRI947/00

# Highlights

### 2 x a month for fast results



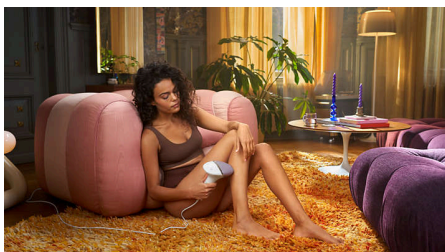
Every 2 weeks to start with — that's half as many treatments as other brands. Followed by touch-ups just once a month. That's it. Covering both lower legs takes 8.5 minutes.

### SenselQ technology



Lumea 8000 Series has five easily adjustable light settings. Our SmartSkin sensor reads your skin tone and helps you find the most comfortable setting. Intelligent attachments adapt treatment for each body area.

### Extra-long cable



Convenient to use thanks to an extra long cable for easy access and enhanced maneuverability.

### 4 smart attachments



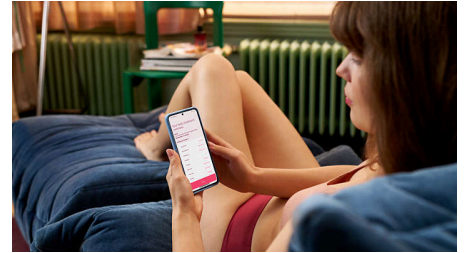
Specially designed attachments perfectly fit the curves of your body and trigger the most effective programmes for each body area when they are connected. Face: Flat design and small window with UV filter. Body: Curved inward with a large window. Bikini and Armpit: Curved outward for hard-to-reach areas.

### Developed with dermatologists



As a leader in health technology, Philips developed Lumea IPL in consultation with dermatologists, for easy and effective use in the safety of your home. Derived from technology used in professional salons, Lumea IPL offers gentle treatment, even on sensitive areas.

### Philips Lumea IPL app



Our free coaching app helps you plan and stick to your treatment schedule, then takes you through each session step by step. Downloaded by more than 2.1 million users.

### For most skin and hair types



IPL needs contrast between the pigment in the hair colour and the pigment in the skin tone, it therefore works on naturally dark blonde, brown and black hair and on skin tones from fair to dark brown (I-V).

## Lumea IPL 8000 Series

IPL Hair removal device with SenselQ

BRI947/00

# Specifications

### Technical specs. attachments

**Body treatment attachment:** Shape: Convex curved, Window size: 4.1 cm<sup>2</sup>, Tailored treatment for body: legs, arms and stomach

**Face treatment attachment:** Shape: Flat, Window size: 2 cm<sup>2</sup>, extra filter, Tailored treatment for face: upper lip, chin and jawline

**Bikini treatment attachment:** Shape: Concave curved, Window size: 3 cm<sup>2</sup>, Tailored treatment for sensitive bikini area

**Underarm treatment attachment:** Shape: Concave curved, Window size: 3 cm<sup>2</sup>, Tailored treatment for underarms

### Safety and adjustable settings

**Integrated UV filter:** Protects skin from UV light

**5 light energy settings:** Adjustable to your individual skin tone

**Integrated safety system:** Prevents unintentional flashing

**SmartSkin sensor:** The right setting on demand

### Application mode

**Slide and Flash:** For quick application

**Stamp and Flash:** For treatment on small areas

**Corded/cordless use:** Corded use

### Technical specifications

**Voltage:** 100–240 V

**High performance lamp:** Built to last, 450,000 flashes, equivalent to 39 years of lamp lifetime\*\*

### Service

**Warranty:** 2 year global warranty + 3 extra years of warranty upon product registration within 90 days

### Items included

**Instructions for use:** User manual

**Storage:** Beauty pouch

**Adapter:** 19.5 V / 4000 mA

### Application time

**Underarms:** 2.5 min

**Bikini line:** 2 min

**Face areas:** 1.5 min

**Lower legs:** 8.5 min

