

# PHILIPS

IPL hair removal device

Lumea IPL 9000 Series

With SenseIQ technology

Underarms, bikini, body, face

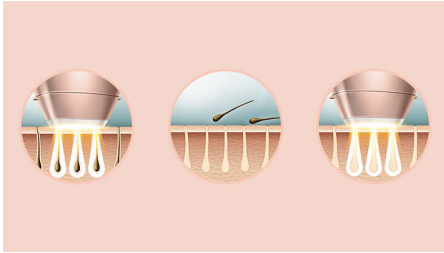
With SmartSkin sensor

Both cordless and corded use



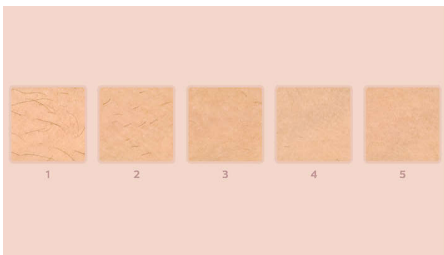
# Highlights

## 6 months hair-free\*



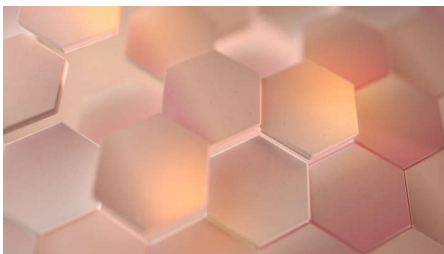
IPL stands for Intense Pulsed Light. It's a technology that uses warm gentle light to put hair to sleep. Light travels to the hair's root causing the follicle to go into a resting phase and stimulating the hair to be released. Repeat treatments gradually prevent hair from growing back, leaving your skin beautifully hair-free and touchably smooth. Philips Lumea is developed with dermatologists and clinically tested to ensure easy, effective and comfortable treatments even on sensitive areas, all from the comfort of your own home.

## 3 treatments, 92% less hair\*\*\*



Objective studies show up to 92% hair reduction after three treatments\*\*\*. Carry out the first four treatments every two weeks, and the next eight treatments every four weeks. After 12 treatments you can enjoy six months of hair-free smooth skin\*.

## SenseIQ technology



Senses. Lumea's SmartSkin sensor detects your skin tone and indicates the most comfortable light setting for you. Adapts. Intelligent

attachments adapt programs tailored for each body area. Cares. Co-developed with dermatologists and inspired by you for a gentle, long-lasting hair removal, even on sensitive areas\*\*\*\*.

## 450,000 flashes in total\*\*\*\*\*



Our lamp can flash up to 450.000 times throughout its lifetime\*\*\*\*\*.

## Treatment of body areas



Your body is unique. And its skin, curves and contours should be treated uniquely too. Lumea's total-body attachments are shaped to perfectly fit every curve, and will adapt programs tailored to each body area. Treatment windows are designed to maximize contact with your skin to ensure light doesn't escape, enabling effective and gentle treatments even on delicate or sensitive areas.

## Bikini attachment



Click on the intelligent bikini attachment and it will adapt a tailored program specifically for that area. It has an optimal 3 cm<sup>2</sup> window with a transparent filter for extra comfort and the

curved design compliments your body's contours for maximum contact, efficiency and comfort. 78% of women satisfied with hair reduction in bikini area\*\*\*\*\*.

## Body attachment



The intelligent body attachment has our largest treatment window: 4.1 cm<sup>2</sup>. So it's perfect for quickly treating larger body areas like the legs, arms and stomach. In fact you can treat both lower legs in only 8.5 minutes. The curved-in design closely follows your body's contours for maximum skin contact. Click on the attachment and it adapts a tailored program specifically to your body. 83% of women satisfied with hair reduction on legs\*\*\*\*\*.

## SmartSkin sensor



Lumea IPL with SenseIQ technology has five easy-to-choose light settings. The SmartSkin sensor detects your skin tone then indicates the most comfortable light setting for whichever area you're treating.

# Specifications

## Technical specs. attachments

**Body treatment attachment:** Shape: Convex curved, Window size: 4.1 cm<sup>2</sup>, Tailored treatment for body

**Face treatment attachment:** Shape: Flat, Window size: 2 cm<sup>2</sup>, extra filter, Tailored treatment for face

**Bikini treatment attachment:** Shape: Concave curved, Window size: 3 cm<sup>2</sup>, extra filter, Tailored treatment for bikini

**Underarm treatment attachment:** Shape: Concave curved, Window size: 3 cm<sup>2</sup>, Tailored for underarm area

## Power

**Voltage:** 100-240 V

## Service

**Warranty:** 2 years global warranty

## Technical specifications

**High performance lamp:** Delivers 450,000 flashes\*\*\*\*\*

## Application areas

**Body areas:** Arms, Legs, Stomach

**Sensitive areas:** Underarms, Bikini

**Face areas:** Upper lip, Chin, Jawline

## Items included

**Instructions for use:** User manual

**Storage:** Luxurious pouch

**Adapter:** 19.5V / 4000mA

## Safety and adjustable settings

**Integrated UV filter:** Protects skin from UV light

**5 light energy settings:** Adjustable to your skin type

**Integrated safety system:** Prevent unintentional flashing

**Skin Tone sensor:** Detects your skin tone

**SmartSkin sensor:** The right setting on demand

## Application time

**Underarms:** 2,5 min

**Bikini line:** 2 min

**Face areas:** 1,5 min

**Lower legs:** 8,5 min

## Application mode

**Slide and Flash:** For quick application

**Corded / cordless use:** Both cordless and corded use

**Stamp and Flash:** For treatment on small areas

## Power

**Power system:** Rechargeable battery

