

# PHILIPS

IPL Hair removal device

Lumea IPL 7000 Series

5 manual intensity settings

3 attachments: body, face, bikini

Lumea IPL App

Corded use



BRI923/00



## Great results, great value

Enjoy 12 months of hair-free smooth skin\*

Get hair-free smooth skin with our Lumea IPL 7000 Series. Treatments are gentle and effective with attachments for each body area.

### Gentle and effective for long-lasting smooth skin

- Treat only 2x a month for fast results
- Developed with dermatologists to be easy and effective
- Extra-long cable for added flexibility while treating

### Full solution for face and body

- Full solution for face and body with 3 attachments
- Suitable for a wide range of skin tones and hair colors
- Comes with Satin Compact pen trimmer

### Personalized IPL hair removal treatment

- Skin Tone Sensor and 5 intensity settings
- Optimize your routine with the Philips Lumea IPL app

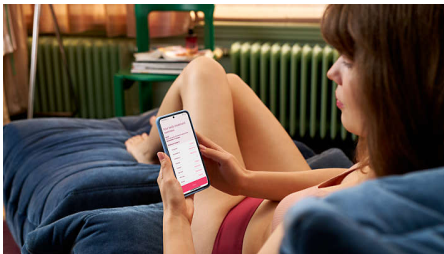
# Highlights

## 3 dedicated attachments



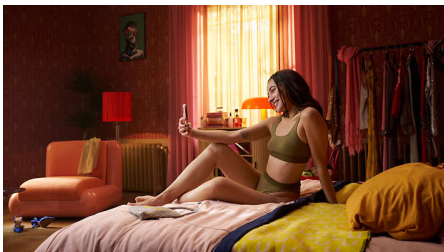
Different heads for body, face and bikini work with speed and precision for gentle use, even on sensitive areas. The face attachment has an integrated light filter for precise treatment.

## Philips Lumea IPL app



Our free coaching app helps you plan and stick to your treatment schedule, then takes you through each session step by step. Downloaded by more than 2.1 million users.

## Developed with dermatologists



As a leader in health technology, Philips developed Lumea IPL in consultation with dermatologists, for easy and effective use in the safety of your home. Derived from

technology used in professional salons, Lumea IPL offers gentle treatment, even on sensitive areas.

## 2x a month for fast results



Every 2 weeks to get started — that's half as many treatments as other brands. Followed by touch-ups just once a month. That's it. Covering both lower legs takes 15 minutes.

## Skin Tone Sensor



Choose from 5 intensity settings for a comfortable experience. The Skin Tone Sensor prevents you from treating areas of your skin that are too dark for IPL treatment.

## Extra-long cable



Convenient to use thanks to an extra long cable for easy access and enhanced maneuverability.

## For many skin and hair types



IPL needs contrast between the pigment in the hair color and the pigment in the skin tone, therefore works on naturally dark blonde, brown and black hair and on skin tones from fair to medium brown (I-IV).

## Satin Compact pen trimmer



Complete your beauty routine: The Satin Compact pen trimmer is a discrete on-the-go beauty tool to quickly and easily remove even the finest facial hairs.

# Specifications

## Safety and adjustable settings

**Integrated UV filter:** Protects skin from UV light  
**5 light energy settings:** Adjustable to your skin type

**Integrated safety system:** Prevent unintentional flashing

## Application mode

**Slide and Flash:** For quick application

**Corded / cordless use:** Corded use

**Stamp and Flash:** For treatment on small areas

## Pen trimmer

**Accessories:** Eyebrow comb, Cleaning brush

**Ease of use:** Compact handle

**Power:** AAA battery

## Technical specifications

**High performance lamp:** Built to last, 250,000 flashes, equivalent to 20 years of lamp lifetime\*\*

**Voltage:** 100–240 V

## Service

**Warranty:** 2 years global warranty + 1 extra year of warranty upon product registration within 90 days

## Items included

**Instructions for use:** User manual

**Storage:** Beauty pouch

**Adapter:** 24V / 1500mA

## Application time

**Lower leg:** 15 min

**Underarms:** 2,5 min

**Bikini line:** 4 min

**Face areas:** 2 min

## Technical specs. attachments

**Body attachment:** Window size: 4.0 cm<sup>2</sup>, Treatment for body: legs, arms, stomach and underarms

**Face attachment:** Window size: 2 cm<sup>2</sup>, extra filter, Treatment for face: upper lip, chin and jawline

**Bikini attachment:** Window size: 2 cm<sup>2</sup>, Treatment for bikini area

